

V&V Reference Report

L2 ASCDS Version : 8.4.3.1

Observation 59292 - L2 Version 2
Chandra X-Ray Center

L2 Processing Date : Mar 17 2012

Contents

1	Front	2
2	OBI	3
2.1	OBI	3
2.1.1	Images	3
2.1.2	Bias	3
2.1.3	Parameters	4
2.1.4	Events	4
2.2	Compared Parameters	5
2.3	Star Slots	6
2.4	FID Slots	6
A	Summary	7
A.1	Status	7
A.2	Comments	7

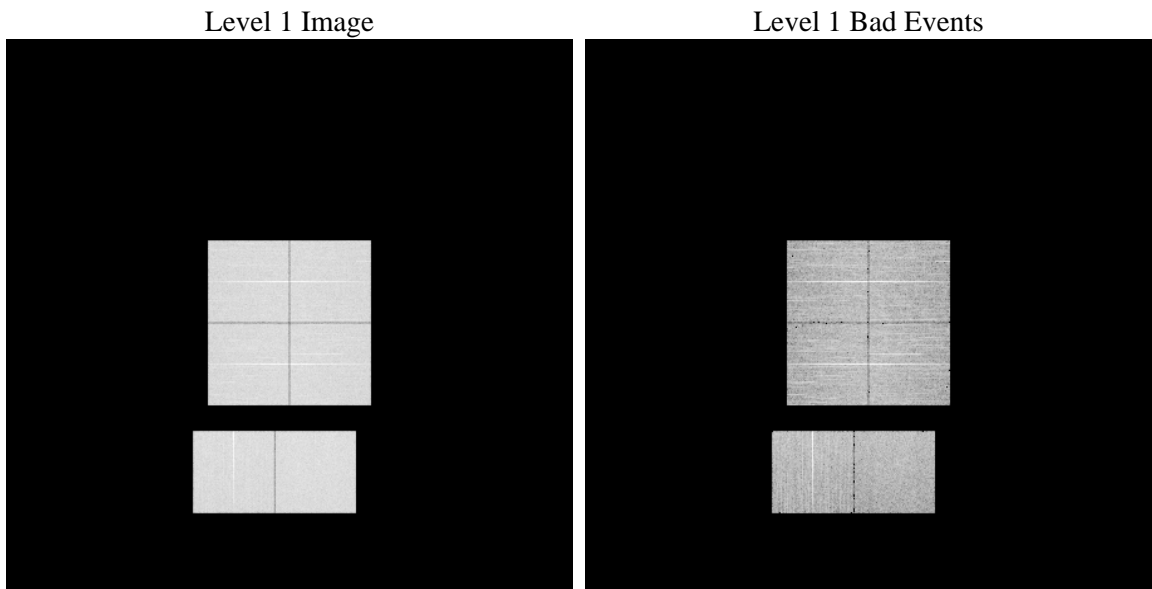
1 Front

seq_num	 	Sequence number
obs_id	59292	Observation id
title	ACIS-012367 diagnostics	Proposal title
observer	CHANDRA engineering request/realtime commanding	Principal investig
object	 	Source name
dtcycle	0	
cycle	P	events from which exps? Prim/Second/Both
ra_targ	0.0	Observer's specified target RA [deg]
dec_targ	0.0	Observer's specified target Dec [deg]
ra_nom	47.974222623538	Nominal RA [deg]
dec_nom	46.975222408532	Nominal Dec [deg]
roll_nom	200.76842076984	Nominal Roll [deg]
revision	2	Processing version of data
ontime	8280.7758551836	Sum of GTIs [s]
livetime	8175.9196852207	Livetime [s]
ontime0	8280.7800522149	Sum of GTIs [s]
ontime1	8280.7800522149	Sum of GTIs [s]
ontime2	8280.7800522149	Sum of GTIs [s]
ontime3	8280.7348151803	Sum of GTIs [s]
ontime6	8281.4400061965	Sum of GTIs [s]
ontime7	8280.7758551836	Sum of GTIs [s]
l2events	1037849	Number of level 2 events

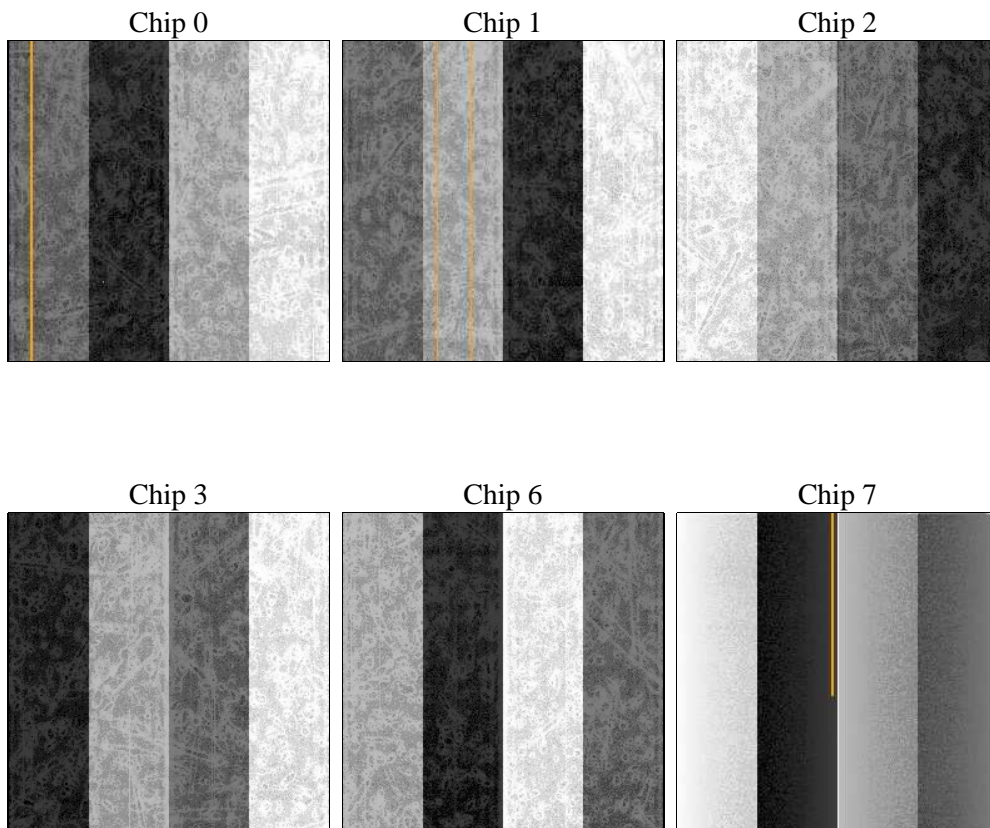
2 OBI

2.1 OBI

2.1.1 Images



2.1.2 Bias



2.1.3 Parameters

obi_num	0	Obi number	sched_exp_time	0.0	[s] Scheduled observation exposure time
ascdsver	8.4.3	Processing system revision	ontime	8280.7758551836	Sum of GTIs [s]
caldsver	4.4.8	 	ontime0	8280.7800522149	Sum of GTIs [s]
date	2012-03-17T16:05:36	Date and time of file creation	ontime1	8280.7800522149	Sum of GTIs [s]
revision	2	Processing version of data	ontime2	8280.7800522149	Sum of GTIs [s]
			ontime3	8280.7348151803	Sum of GTIs [s]
			ontime6	8281.4400061965	Sum of GTIs [s]
			ontime7	8280.7758551836	Sum of GTIs [s]
			l1events	1461534	Number of level 1 events

2.1.4 Events

	ccd 0	ccd 1	ccd 2	ccd 3	ccd 6	ccd 7		ccd 0	ccd 1	ccd 2	ccd 3	ccd 6	ccd 7
level 1 events	236808	236319	241435	241972	248435	256565	grade 0 events	95844	95707	98406	98335	98691	46787
rejected events	61728	59818	64248	64911	64623	53647		40%	40%	40%	40%	39%	18%
rejected %	26%	25%	26%	26%	26%	20%	grade 1 events	610	512	673	622	526	152
								0%	0%	0%	0%	0%	0%
							grade 2 events	30711	31740	30133	30255	31986	44421
								12%	13%	12%	12%	12%	17%
							grade 3 events	11411	11404	11661	11701	11486	20010
								4%	4%	4%	4%	4%	7%
							grade 4 events	11403	11336	11718	11803	11630	19735
								4%	4%	4%	4%	4%	7%
							grade 5 events	3463	3771	3369	3963	3925	9333
								1%	1%	1%	1%	1%	3%
							grade 6 events	25711	26314	25269	24967	30078	71965
								10%	11%	10%	10%	12%	28%
							grade 7 events	57655	55535	60206	60326	60113	44162
								24%	23%	24%	24%	24%	17%

2.2 Compared Parameters

Parameter	Planned	Actual
Instrument	ACIS	ACIS
Detector	ACIS-012367	ACIS-012367
Grating	NONE	NONE
Data mode	FAINT	FAINT
Observation mode	SECONDARY	SECONDARY
[deg] Pointing RA	0	47.97422262353776
[deg] Pointing Dec	0	46.97522240853226
[deg] Pointing Roll	0.0	200.7684207698392
[mm] SIM focus pos	-0.782348	-0.7809083437167272
[mm] SIM defocus	0	0.7524282956875696
[mm] SIM translation stage pos	-233.592463	250.4635187648994
[mm] SIM translation stage offset	0	-0.007540371344731511
[s] Observation start time (MET)	249057498.221035	249057497.19603
Observation start date	2005-11-22T14:38:18	2005-11-22T14:38:17
[s] Observation end time (MET)	249080423.372094	249080422.34709
Observation end date	2005-11-22T21:00:23	2005-11-22T21:00:22
Read mode	TIMED	TIMED

Parameter	Planned	Actual
Obspar format version number	7	7
Obspar file type	PREDICTED	ACTUAL
Obspar update status	NONE	UPDATED
On-chip summing requested	N	N
Subarray requested	NONE	NONE
Alternating exposures requested	N	N
[s] Primary exposure time	3.2	3.2

2.3 Star Slots

2.4 FID Slots

A Summary

A.1 Status

V&V Scientist	Jen Lauer
V&V Date (YYYY-MM-DD)	2012.03.19
V&V Edition	1
V&V Disposition and Status	OK
V&V Charge Time	8.2807758551836

A.2 Comments