

V&V Reference Report

L2 ASCDS Version : 8.4.3

Observation 59239 - L2 Version 2
Chandra X-Ray Center

L2 Processing Date : Mar 20 2012

Contents

1	Front	2
2	OBI	3
2.1	OBI	3
2.1.1	Images	3
2.1.2	Bias	3
2.1.3	Parameters	4
2.1.4	Events	4
2.2	Compared Parameters	5
2.3	Star Slots	6
2.4	FID Slots	6
A	Summary	7
A.1	Status	7
A.2	Comments	7

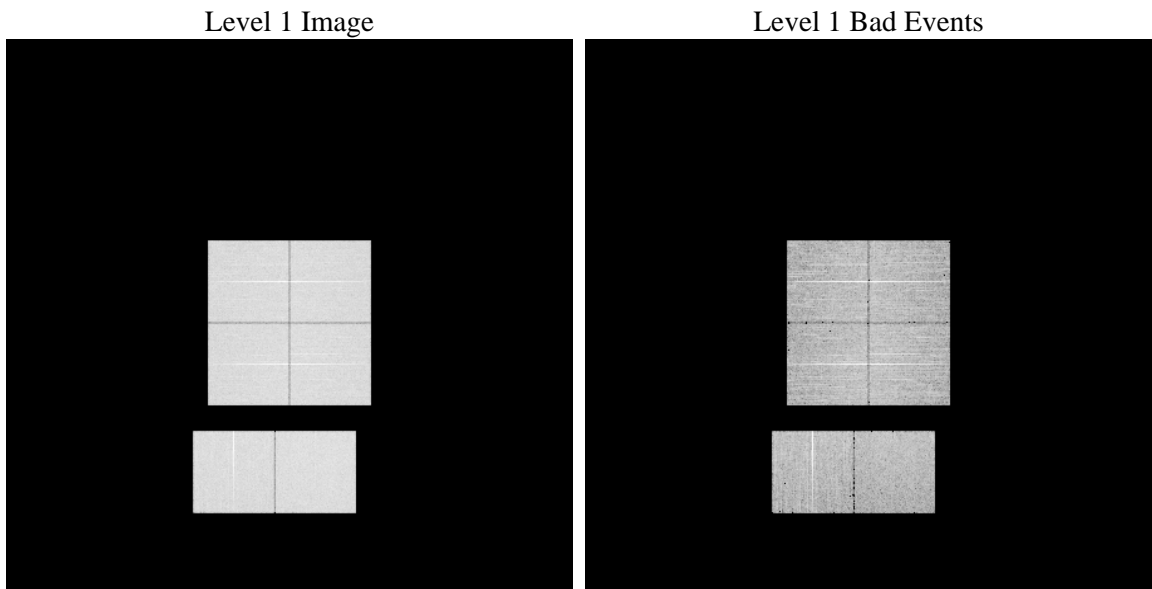
1 Front

seq_num	 	Sequence number
obs_id	59239	Observation id
title	ACIS-012367 diagnostics	Proposal title
observer	CHANDRA engineering request/realtime commanding	Principal investig
object	 	Source name
dtcycle	0	
cycle	P	events from which exps? Prim/Second/Both
ra_targ	0.0	Observer's specified target RA [deg]
dec_targ	0.0	Observer's specified target Dec [deg]
ra_nom	80.027565610261	Nominal RA [deg]
dec_nom	-4.9889396180559	Nominal Dec [deg]
roll_nom	353.4878400484	Nominal Roll [deg]
revision	2	Processing version of data
ontime	7800.5020031035	Sum of GTIs [s]
livetime	7701.7273498418	Livetime [s]
ontime0	7800.4609631002	Sum of GTIs [s]
ontime1	7797.1789428294	Sum of GTIs [s]
ontime2	7800.3788830936	Sum of GTIs [s]
ontime3	7800.5430431068	Sum of GTIs [s]
ontime6	7800.3378431201	Sum of GTIs [s]
ontime7	7800.5020031035	Sum of GTIs [s]
l2events	973387	Number of level 2 events

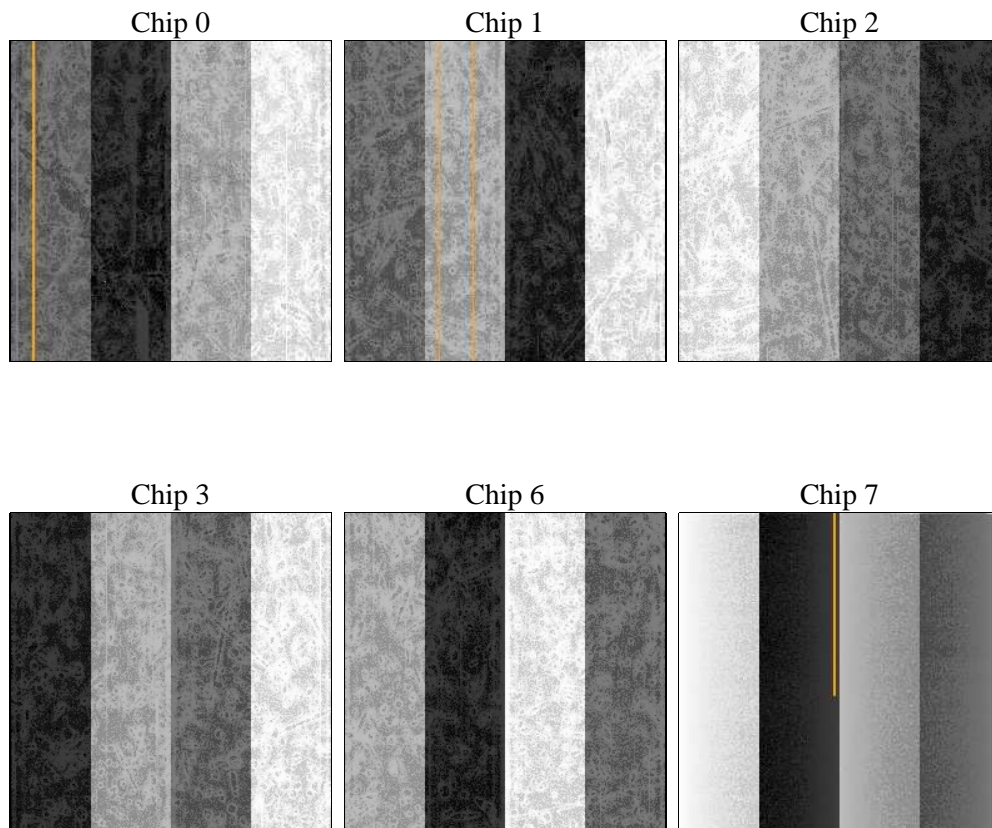
2 OBI

2.1 OBI

2.1.1 Images



2.1.2 Bias



2.1.3 Parameters

obi_num	0	Obi number	sched_exp_time	0.0	[s] Scheduled observation exposure time
ascdsver	8.4.3	Processing system revision	ontime	7800.5020031035	Sum of GTIs [s]
caldsver	4.4.8	 	ontime0	7800.4609631002	Sum of GTIs [s]
date	2012-03-20T04:31:34	Date and time of file creation	ontime1	7797.1789428294	Sum of GTIs [s]
revision	2	Processing version of data	ontime2	7800.3788830936	Sum of GTIs [s]
			ontime3	7800.5430431068	Sum of GTIs [s]
			ontime6	7800.3378431201	Sum of GTIs [s]
			ontime7	7800.5020031035	Sum of GTIs [s]
			l1events	1373971	Number of level 1 events

2.1.4 Events

	ccd 0	ccd 1	ccd 2	ccd 3	ccd 6	ccd 7		ccd 0	ccd 1	ccd 2	ccd 3	ccd 6	ccd 7
level 1 events	221967	221823	226398	229168	231768	242847	grade 0 events	89567	89621	92259	92596	92054	44313
rejected events	57624	56600	60824	62937	59800	51566		40%	40%	40%	40%	39%	18%
rejected %	25%	25%	26%	27%	25%	21%	grade 1 events	555	488	603	645	500	169
								0%	0%	0%	0%	0%	0%
							grade 2 events	29095	29681	27927	28484	30372	41880
								13%	13%	12%	12%	13%	17%
							grade 3 events	10852	10600	10861	11100	10776	19057
								4%	4%	4%	4%	4%	7%
							grade 4 events	10669	10531	11013	10922	10948	18754
								4%	4%	4%	4%	4%	7%
							grade 5 events	3421	3508	3206	3834	3766	9102
								1%	1%	1%	1%	1%	3%
							grade 6 events	24160	24790	23514	23129	27818	67277
								10%	11%	10%	10%	12%	27%
							grade 7 events	53648	52604	57015	58458	55534	42295
								24%	23%	25%	25%	23%	17%

2.2 Compared Parameters

Parameter	Planned	Actual	Parameter	Planned	Actual
Instrument	ACIS	ACIS	Obspar format version number	7	7
Detector	ACIS-012367	ACIS-012367	Obspar file type	PREDICTED	ACTUAL
Grating	NONE	NONE	Obspar update status	NONE	UPDATED
Data mode	FAINT	FAINT	On-chip summing requested	N	N
Observation mode	SECONDARY	SECONDARY	Subarray requested	NONE	NONE
[deg] Pointing RA	0	80.02756561026129	Alternating exposures requested	N	N
[deg] Pointing Dec	0	-4.988939618055858	[s] Primary exposure time	3.2	3.2
[deg] Pointing Roll	0.0	353.4878400484043			
[mm] SIM focus pos	-0.782348	-1.428180813131781			
[mm] SIM defocus	0	0.1051558262725154			
[mm] SIM translation stage pos	-233.592463	250.466033080201			
[mm] SIM translation stage offset	0	-0.01005468664627074			
[s] Observation start time (MET)	251070370.764077	251070369.73908			
Observation start date	2005-12-15T21:46:11	2005-12-15T21:46:09			
[s] Observation end time (MET)	251088201.664902	251088200.63991			
Observation end date	2005-12-16T02:43:22	2005-12-16T02:43:20			
Read mode	TIMED	TIMED			

2.3 Star Slots

2.4 FID Slots

A Summary

A.1 Status

V&V Scientist	Jen Lauer
V&V Date (YYYY-MM-DD)	2012.03.20
V&V Edition	1
V&V Disposition and Status	OK
V&V Charge Time	7.8005020031035

A.2 Comments