

# V&V Reference Report

## L2 ASCDS Version : 7.6.7.1

Observation 62834 - L2 Version 001  
Chandra X-Ray Center

L2 Processing Date : Apr 12 2006

## Contents

<b>1</b>	<b>Front</b>	<b>2</b>
<b>2</b>	<b>OBI</b>	<b>3</b>
2.1	OBI . . . . .	3
2.1.1	Images . . . . .	3
2.1.2	Bias . . . . .	3
2.1.3	Parameters . . . . .	4
2.1.4	Events . . . . .	4
2.2	Compared Parameters . . . . .	5
2.3	Aspect . . . . .	6
2.4	Star Slots . . . . .	8
2.5	FID Slots . . . . .	8
<b>A</b>	<b>Summary</b>	<b>9</b>
A.1	Status . . . . .	9
A.2	Comments . . . . .	9

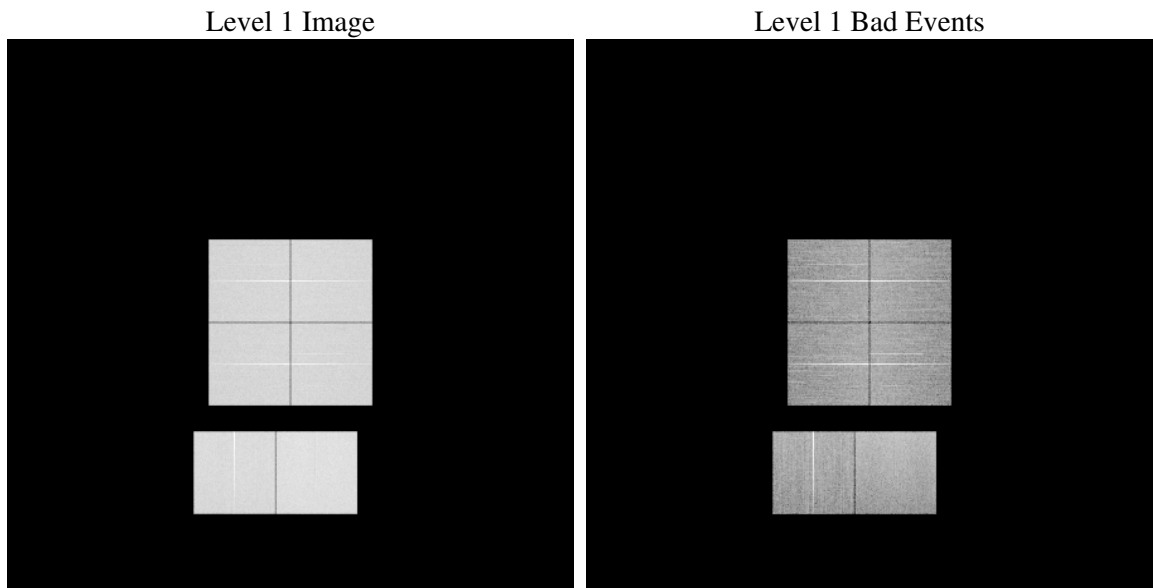
# 1 Front

seq_num	&#160
obs_id	62834
title	ACIS-012367 diagnostics
observer	CHANDRA engineering request/realtime commanding
object	&#160
dtcycle	0
cycle	P
ra_targ	0.0
dec_targ	0.0
ra_nom	52.419854464704
dec_nom	-1.9794308752328
roll_nom	13.115896489936
revision	2
ontime	24835.199907482
livetime	24520.721652291
ontime0	20916.861355841
ontime1	21539.127484918
ontime2	20246.608985275
ontime3	20521.461495578
ontime6	22151.592937291
ontime7	24835.199907482
l2events	3441219

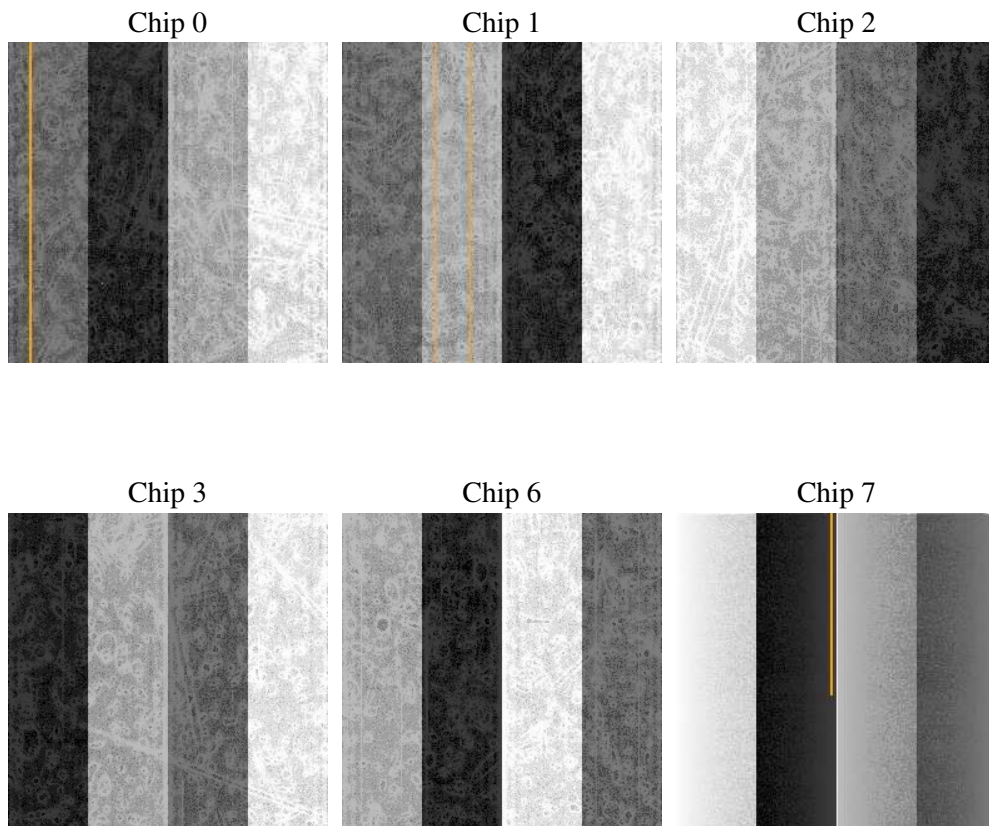
## 2 OBI

### 2.1 OBI

#### 2.1.1 Images



#### 2.1.2 Bias



### 2.1.3 Parameters

obi_num	0
ascdsver	7.6.7.1
caldbver	3.2.1
date	2006-04-12T09:33:47
revision	2

sched_exp_time	0.0
ontime	24926.57779786
ontime0	20956.383173466
ontime1	21585.131302983
ontime2	20279.019295692
ontime3	20570.706313819
ontime6	22194.434656322
ontime7	24926.57779786
l1events	4442795

### 2.1.4 Events

	ccd 0	ccd 1	ccd 2	ccd 3	ccd 6	ccd 7
level 1 events	694922	717211	685242	697487	776521	871412
rejected events	128040	130530	128732	132569	143378	165389
rejected %	18%	18%	18%	19%	18%	18%

	ccd 0	ccd 1	ccd 2	ccd 3	ccd 6	ccd 7
grade 0 events	313843	321246	312161	318116	343711	121003
	45%	44%	45%	45%	44%	13%
grade 1 events	1722	1520	1778	1799	1624	348
	0%	0%	0%	0%	0%	0%
grade 2 events	98951	104780	93543	95825	109618	215153
	14%	14%	13%	13%	14%	24%
grade 3 events	36883	37289	36670	36904	39601	50541
	5%	5%	5%	5%	5%	5%
grade 4 events	36311	37509	36405	37113	39291	50002
	5%	5%	5%	5%	5%	5%
grade 5 events	8312	8594	7828	8755	9445	19313
	1%	1%	1%	1%	1%	2%
grade 6 events	81924	87074	78510	78258	102117	271970
	11%	12%	11%	11%	13%	31%
grade 7 events	116976	119199	118347	120717	131114	143082
	16%	16%	17%	17%	16%	16%

## 2.2 Compared Parameters

Parameter	Planned	Actual	Parameter	Planned	Actual
Instrument	ACIS	ACIS	Obspar format version number	6	6
Detector	ACIS-012367	ACIS-012367	Obspar file type	PREDICTED	ACTUAL
Grating	NONE	NONE	Obspar update status	NONE	UPDATED
Data mode	FAINT	FAINT	On-chip summing requested	N	N
Observation mode	SECONDARY	SECONDARY	Subarray requested	NONE	NONE
Pointing RA	0	52.41985446470376	Alternating exposures requested	N	N
Pointing Dec	0	-1.97943087523275	Primary exposure time	3.2	3.2
Pointing Roll	0.0	13.11589648993611			
SIM focus pos (mm)	-0.782348	-0.6828225247311905			
SIM defocus (mm)	0	0.8505141146731063			
SIM translation stage pos (mm)	-233.592463	250.466033080201			
SIM translation stage offset (mm)	0	-0.01005468664627074			
Observation start time	216676395.795915	216676394.77094			
Observation start date	2004-11-12T19:53:16	2004-11-12T19:53:14			
Observation end time	216703150.34714	216703149.32214			
Observation end date	2004-11-13T03:19:10	2004-11-13T03:19:09			
Read mode	TIMED	TIMED			

## 2.3 Aspect



## 2.4 Star Slots

## 2.5 FID Slots

## A Summary

### A.1 Status

V&V Scientist	Jen Lauer
V&V Date (YYYY-MM-DD)	2006.04.12
V&V Edition	1
V&V Disposition and Status	OK
V&V Charge Time	24.8351999

### A.2 Comments