

# V&V Reference Report

## L2 ASCDS Version : 8.4.5

Observation 60417 - L2 Version 3  
Chandra X-Ray Center

L2 Processing Date : Nov 10 2012

## Contents

<b>1</b>	<b>Front</b>	<b>2</b>
<b>2</b>	<b>OBI</b>	<b>3</b>
2.1	OBI . . . . .	3
2.1.1	Images . . . . .	3
2.1.2	Bias . . . . .	3
2.1.3	Parameters . . . . .	4
2.1.4	Events . . . . .	4
2.2	Compared Parameters . . . . .	5
2.3	Star Slots . . . . .	6
2.4	FID Slots . . . . .	6
<b>A</b>	<b>Summary</b>	<b>7</b>
A.1	Status . . . . .	7
A.2	Comments . . . . .	7

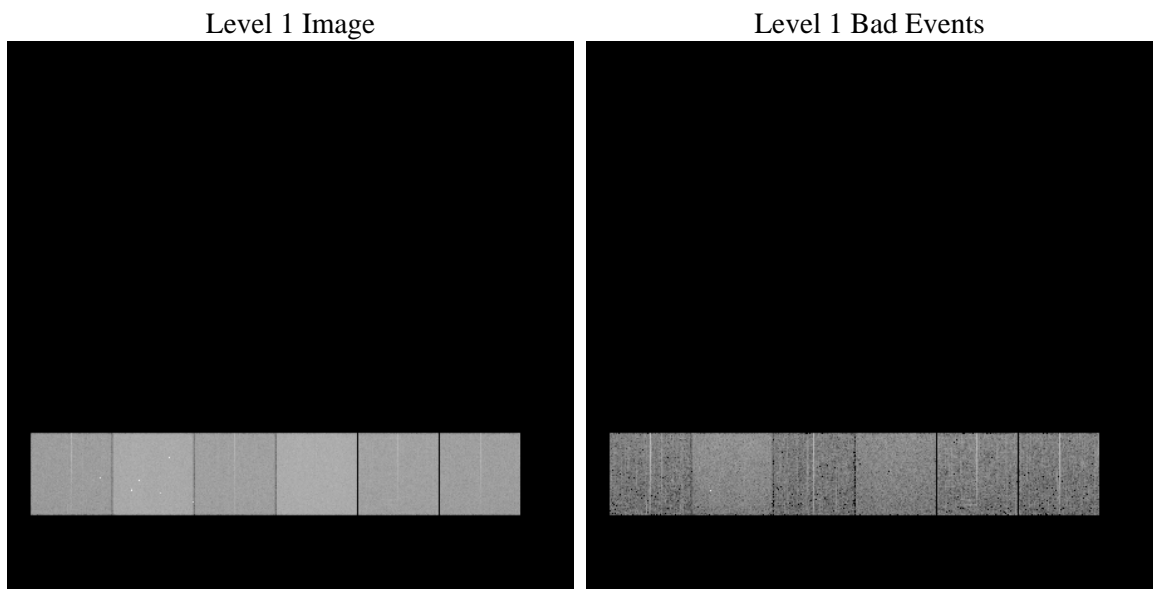
# 1 Front

seq_num	&#160	Sequence number
obs_id	60417	Observation id
title	ACIS-456789 diagnostics	Proposal title
observer	CHANDRA engineering request/realtime commanding	Principal investig
object	&#160	Source name
dtcycle	0	&#160
cycle	P	events from which exps? Prim/Second/Both
ra_targ	0.0	Observer's specified target RA [deg]
dec_targ	0.0	Observer's specified target Dec [deg]
ra_nom	108.09667580478	Nominal RA [deg]
dec_nom	1.0440213200189	Nominal Dec [deg]
roll_nom	1.0299240431047	Nominal Roll [deg]
revision	3	Processing version of data
ontime	7807.5039407313	Sum of GTIs [s]
livetime	7708.6406247193	Livetime [s]
ontime4	4640.9469749629	Sum of GTIs [s]
ontime5	7807.462900728	Sum of GTIs [s]
ontime6	5029.9054150581	Sum of GTIs [s]
ontime7	7807.5039407313	Sum of GTIs [s]
ontime8	5101.1250099838	Sum of GTIs [s]
ontime9	4910.1129540205	Sum of GTIs [s]
l2events	1136869	Number of level 2 events

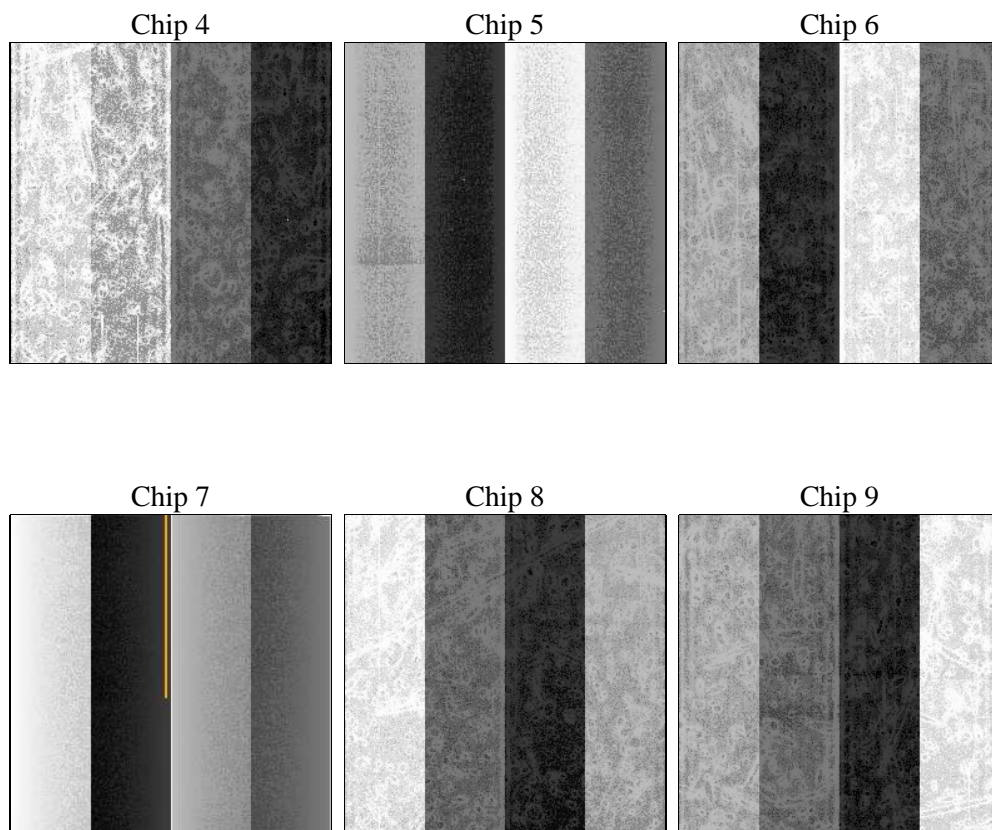
## 2 OBI

### 2.1 OBI

#### 2.1.1 Images



#### 2.1.2 Bias



### 2.1.3 Parameters

obi_num	0	Obi number	sched_exp_time	0.0	[s] Scheduled observation exposure time
ascdsver	8.4.5	Processing system revision	ontime	7807.5039407313	Sum of GTIs [s]
caldsver	4.5.2	&#160	ontime4	4640.9469749629	Sum of GTIs [s]
date	2012-11-10T08:38:53	Date and time of file creation	ontime5	7807.462900728	Sum of GTIs [s]
revision	3	Processing version of data	ontime6	5029.9054150581	Sum of GTIs [s]
			ontime7	7807.5039407313	Sum of GTIs [s]
			ontime8	5101.1250099838	Sum of GTIs [s]
			ontime9	4910.1129540205	Sum of GTIs [s]
			l1events	1417343	Number of level 1 events

### 2.1.4 Events

	ccd 4	ccd 5	ccd 6	ccd 7	ccd 8	ccd 9		ccd 4	ccd 5	ccd 6	ccd 7	ccd 8	ccd 9
level 1 events	183857	296121	206579	318376	216417	195993	grade 0 events	88653	56445	96400	69786	99508	91256
rejected events	31714	49456	29790	39432	35386	30724		48%	19%	46%	21%	45%	46%
rejected %	17%	16%	14%	12%	16%	15%	grade 1 events	601	245	397	215	455	476
								0%	0%	0%	0%	0%	0%
							grade 2 events	24176	89636	30426	61951	31547	28511
								13%	30%	14%	19%	14%	14%
							grade 3 events	10051	14800	10954	28035	11616	10597
								5%	4%	5%	8%	5%	5%
							grade 4 events	9992	14300	10947	28009	11802	10637
								5%	4%	5%	8%	5%	5%
							grade 5 events	2064	8585	2205	7406	2605	2343
								1%	2%	1%	2%	1%	1%
							grade 6 events	19271	71484	28062	91163	26558	24268
								10%	24%	13%	28%	12%	12%
							grade 7 events	29049	40626	27188	31811	32326	27905
								15%	13%	13%	9%	14%	14%

## 2.2 Compared Parameters

Parameter	Planned	Actual
Instrument	ACIS	ACIS
Detector	ACIS-456789	ACIS-456789
Grating	NONE	NONE
Data mode	FAINT	FAINT
Observation mode	SECONDARY	SECONDARY
[deg] Pointing RA	0	108.0966758047779
[deg] Pointing Dec	0	1.044021320018931
[deg] Pointing Roll	0.0	1.029924043104667
[mm] SIM focus pos	-0.684267	-0.6828225247311905
[mm] SIM defocus	0	0.8505141146731063
[mm] SIM translation stage pos	-190.132523	250.466033080201
[mm] SIM translation stage offset	0	-0.01005468664627074
[s] Observation start time (MET)	189846808.458849	189846807.43414
Observation start date	2004-01-07T07:13:28	2004-01-07T07:13:27
[s] Observation end time (MET)	189884177.910475	189884176.88576
Observation end date	2004-01-07T17:36:18	2004-01-07T17:36:16
Read mode	TIMED	TIMED

Parameter	Planned	Actual
Obspar format version number	7	7
Obspar file type	PREDICTED	ACTUAL
Obspar update status	NONE	UPDATED
On-chip summing requested	N	N
Subarray requested	NONE	NONE
Alternating exposures requested	N	N
[s] Primary exposure time	0.000000	3.2

## 2.3 Star Slots

## 2.4 FID Slots

## A Summary

### A.1 Status

V&V Scientist	Beth Sundheim
V&V Date (YYYY-MM-DD)	2012.12.18
V&V Edition	1
V&V Disposition and Status	OK
V&V Charge Time	7.8075039407313

### A.2 Comments