

V&V Reference Report

L2 ASCDS Version : 7.6.7.2

Observation 60417 - L2 Version 001
Chandra X-Ray Center

L2 Processing Date : Jun 8 2006

Contents

1	Front	2
2	OBI	3
2.1	OBI	3
2.1.1	Images	3
2.1.2	Bias	3
2.1.3	Parameters	4
2.1.4	Events	4
2.2	Compared Parameters	5
2.3	Aspect	6
2.4	Star Slots	8
2.5	FID Slots	8
A	Summary	9
A.1	Status	9
A.2	Comments	9

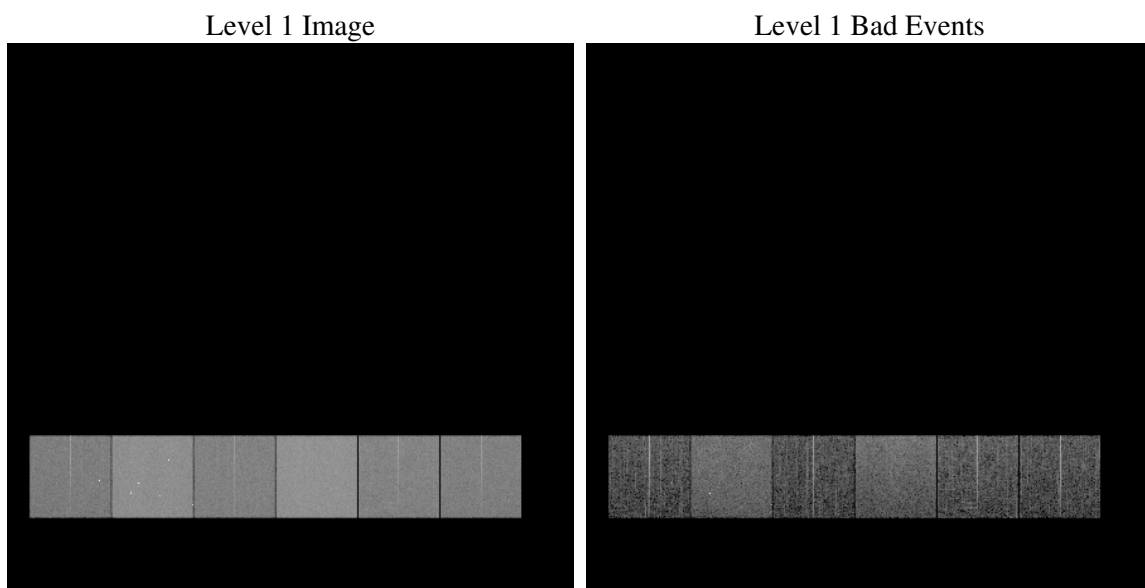
1 Front

seq_num	
obs_id	60417
title	ACIS-456789 diagnostics
observer	CHANDRA engineering request/realtime commanding
object	
dtcycle	0
cycle	P
ra_targ	0.0
dec_targ	0.0
ra_nom	108.09664577
dec_nom	1.0440542014023
roll_nom	1.0299224406304
revision	2
ontime	7806.4762398899
livetime	7707.6259372447
ontime4	4640.1655141413
ontime5	7806.5172798932
ontime6	5029.0418742299
ontime7	7806.4762398899
ontime8	5100.4256291091
ontime9	4909.0031731725
l2events	1121058

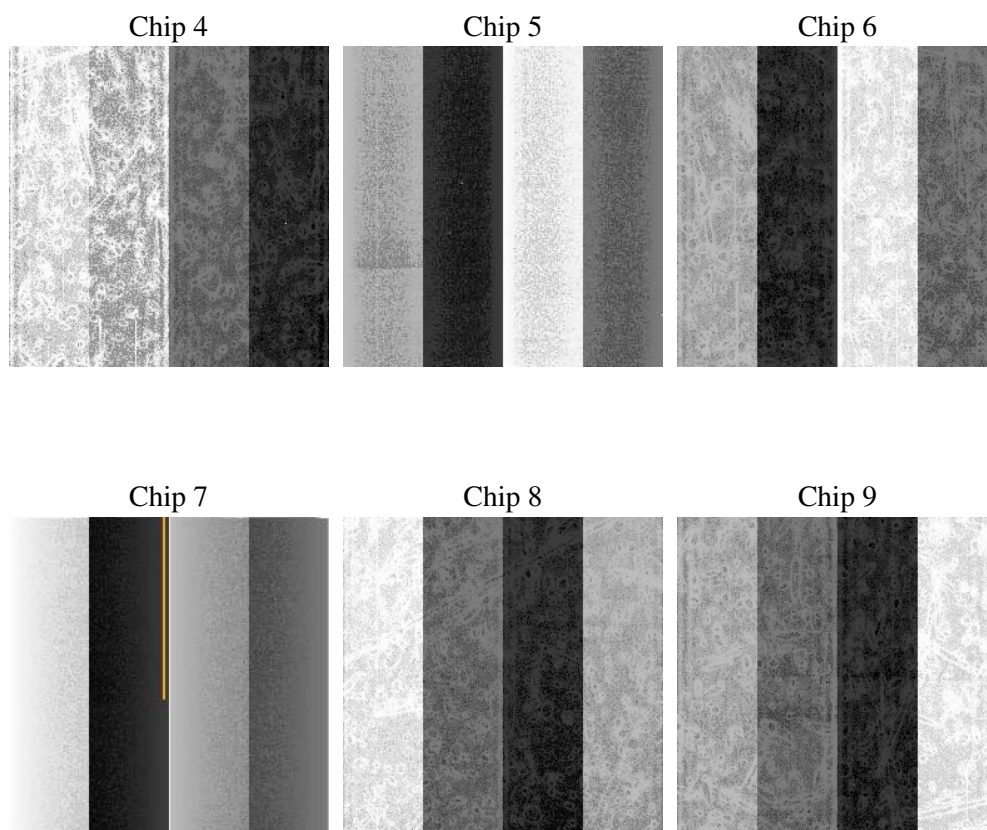
2 OBI

2.1 OBI

2.1.1 Images



2.1.2 Bias



2.1.3 Parameters

obi_num	0
ascdsver	7.6.7.2
caldbver	3.2.2
date	2006-06-08T14:12:02
revision	2

sched_exp_time	0.0
ontime	7807.5802097023
ontime4	4641.1463639438
ontime5	7807.5802097023
ontime6	5030.0637640357
ontime7	7807.5802097023
ontime8	5101.3654389381
ontime9	4910.1481829882
l1events	1417343

2.1.4 Events

	ccd 4	ccd 5	ccd 6	ccd 7	ccd 8	ccd 9
level 1 events	183857	296121	206579	318376	216417	195993
rejected events	31714	56023	29789	49069	35385	30723
rejected %	17%	18%	14%	15%	16%	15%

	ccd 4	ccd 5	ccd 6	ccd 7	ccd 8	ccd 9
grade 0 events	88649	28979	96388	49300	99500	91250
	48%	9%	46%	15%	45%	46%
grade 1 events	601	128	397	145	455	476
	0%	0%	0%	0%	0%	0%
grade 2 events	24180	113621	30438	80845	31555	28517
	13%	38%	14%	25%	14%	14%
grade 3 events	10050	7717	10951	20131	11615	10596
	5%	2%	5%	6%	5%	5%
grade 4 events	9990	7297	10946	19869	11801	10636
	5%	2%	5%	6%	5%	5%
grade 5 events	2064	6231	2203	6297	2600	2342
	1%	2%	1%	1%	1%	1%
grade 6 events	19274	82484	28067	99162	26561	24271
	10%	27%	13%	31%	12%	12%
grade 7 events	29049	49664	27189	42627	32330	27905
	15%	16%	13%	13%	14%	14%

2.2 Compared Parameters

Parameter	Planned	Actual	Parameter	Planned	Actual
Instrument	ACIS	ACIS	Obspar format version number	6	6
Detector	ACIS-456789	ACIS-456789	Obspar file type	PREDICTED	ACTUAL
Grating	NONE	NONE	Obspar update status	NONE	UPDATED
Data mode	FAINT	FAINT	On-chip summing requested	N	N
Observation mode	SECONDARY	SECONDARY	Subarray requested	NONE	NONE
Pointing RA	0	108.0966457700036	Alternating exposures requested	N	N
Pointing Dec	0	1.044054201402328	Primary exposure time	0.000000	3.2
Pointing Roll	0.0	1.029922440630427			
SIM focus pos (mm)	-0.684267	-0.6828225247311905			
SIM defocus (mm)	0	0.8505141146731063			
SIM translation stage pos (mm)	-190.132523	250.466033080201			
SIM translation stage offset (mm)	0	-0.01005468664627074			
Observation start time	189846808.458849	189846807.43414			
Observation start date	2004-01-07T07:13:28	2004-01-07T07:13:27			
Observation end time	189884177.910475	189884176.88576			
Observation end date	2004-01-07T17:36:18	2004-01-07T17:36:16			
Read mode	TIMED	TIMED			

2.3 Aspect

2.4 Star Slots

2.5 FID Slots

A Summary

A.1 Status

V&V Scientist	Jen Lauer
V&V Date (YYYY-MM-DD)	2006.06.08
V&V Edition	1
V&V Disposition and Status	OK
V&V Charge Time	7.80647623

A.2 Comments