

V&V Reference Report

L2 ASCDS Version : 8.4.5

Observation 60409 - L2 Version 3
Chandra X-Ray Center

L2 Processing Date : Nov 10 2012

Contents

1	Front	2
2	OBI	3
2.1	OBI	3
2.1.1	Images	3
2.1.2	Bias	3
2.1.3	Parameters	4
2.1.4	Events	4
2.2	Compared Parameters	5
2.3	Star Slots	6
2.4	FID Slots	6
A	Summary	7
A.1	Status	7
A.2	Comments	7

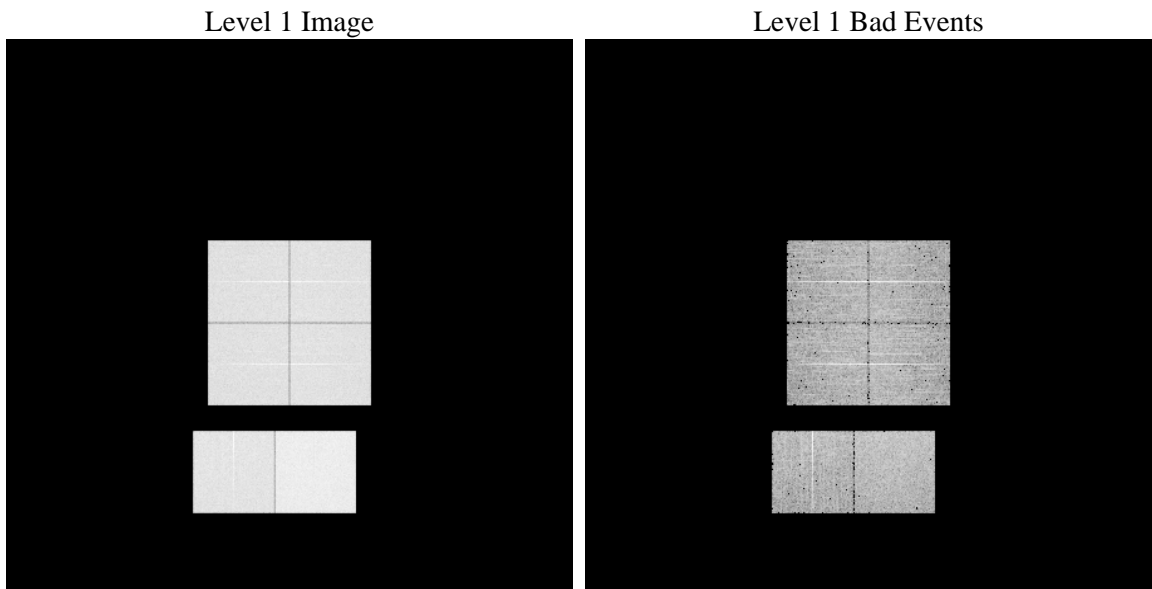
1 Front

seq_num	 	Sequence number
obs_id	60409	Observation id
title	ACIS-012367 diagnostics	Proposal title
observer	CHANDRA engineering request/realtime commanding	Principal investig
object	 	Source name
dtcycle	0	
cycle	P	events from which exps? Prim/Second/Both
ra_targ	0.0	Observer's specified target RA [deg]
dec_targ	0.0	Observer's specified target Dec [deg]
ra_nom	96.527818850418	Nominal RA [deg]
dec_nom	3.9929814972965	Nominal Dec [deg]
roll_nom	312.89917697148	Nominal Roll [deg]
revision	3	Processing version of data
ontime	8467.1999684572	Sum of GTIs [s]
livetime	8359.9831841209	Livetime [s]
ontime0	5854.9716303647	Sum of GTIs [s]
ontime1	6059.1533256173	Sum of GTIs [s]
ontime2	5741.53776896	Sum of GTIs [s]
ontime3	5851.7311071157	Sum of GTIs [s]
ontime6	6264.0461600423	Sum of GTIs [s]
ontime7	8467.1999684572	Sum of GTIs [s]
l2events	1250044	Number of level 2 events

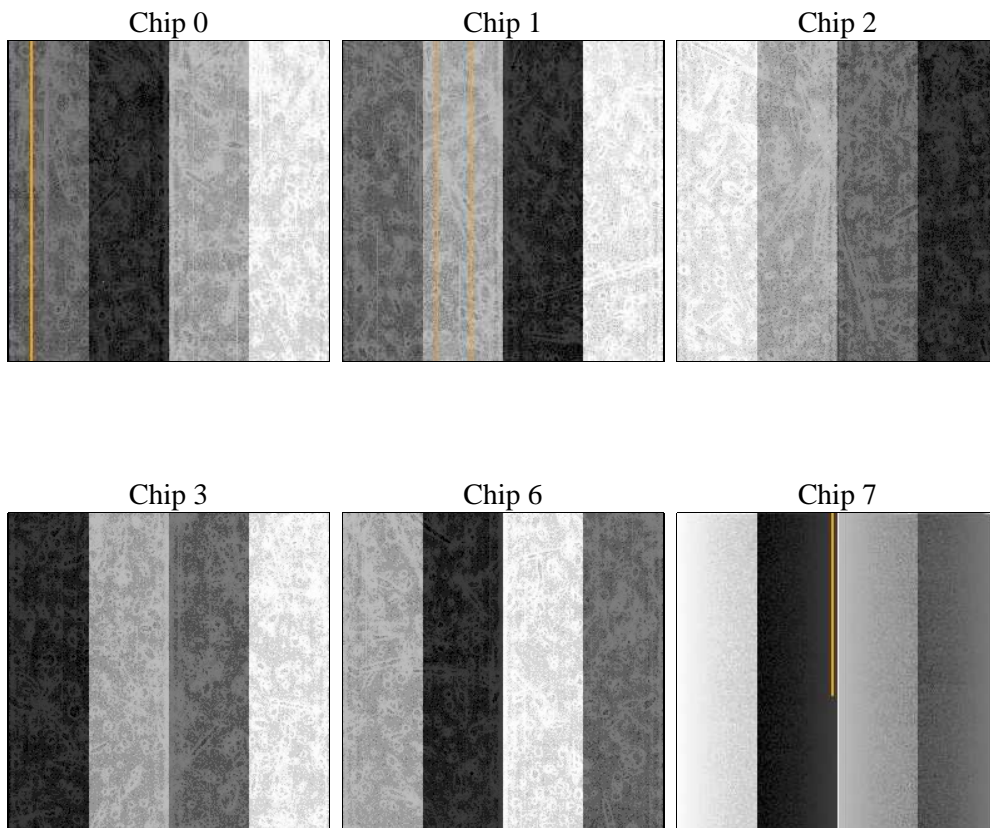
2 OBI

2.1 OBI

2.1.1 Images



2.1.2 Bias



2.1.3 Parameters

obi_num	1	Obi number	sched_exp_time	0.0	[s] Scheduled observation exposure time
ascdsver	8.4.5	Processing system revision	ontime	8467.1999684572	Sum of GTIs [s]
caldbver	4.5.2	 	ontime0	5854.9716303647	Sum of GTIs [s]
date	2012-11-10T20:59:58	Date and time of file creation	ontime1	6059.1533256173	Sum of GTIs [s]
revision	3	Processing version of data	ontime2	5741.53776896	Sum of GTIs [s]
			ontime3	5851.7311071157	Sum of GTIs [s]
			ontime6	6264.0461600423	Sum of GTIs [s]
			ontime7	8467.1999684572	Sum of GTIs [s]
			l1events	1536042	Number of level 1 events

2.1.4 Events

	ccd 0	ccd 1	ccd 2	ccd 3	ccd 6	ccd 7		ccd 0	ccd 1	ccd 2	ccd 3	ccd 6	ccd 7
level 1 events	231098	237378	228507	235834	258016	345209	grade 0 events	108209	111059	108064	110939	119738	74679
rejected events	35719	35443	35398	37804	38078	43937		46%	46%	47%	47%	46%	21%
rejected %	15%	14%	15%	16%	14%	12%	grade 1 events	550	489	642	610	565	201
								0%	0%	0%	0%	0%	0%
							grade 2 events	34114	35816	32453	34189	37832	66038
								14%	15%	14%	14%	14%	19%
							grade 3 events	12490	12815	12538	13076	13630	30349
								5%	5%	5%	5%	5%	8%
							grade 4 events	12417	12600	12521	12668	13495	30224
								5%	5%	5%	5%	5%	8%
							grade 5 events	2428	2572	2256	2545	2711	8190
								1%	1%	0%	1%	1%	2%
							grade 6 events	28149	29645	27533	27158	35243	99982
								12%	12%	12%	11%	13%	28%
							grade 7 events	32741	32382	32500	34649	34802	35546
								14%	13%	14%	14%	13%	10%

2.2 Compared Parameters

Parameter	Planned	Actual	Parameter	Planned	Actual
Instrument	ACIS	ACIS	Obspar format version number	7	7
Detector	ACIS-012367	ACIS-012367	Obspar file type	PREDICTED	ACTUAL
Grating	NONE	NONE	Obspar update status	NONE	UPDATED
Data mode	FAINT	FAINT	On-chip summing requested	N	N
Observation mode	SECONDARY	SECONDARY	Subarray requested	NONE	NONE
[deg] Pointing RA	0	96.52781885041847	Alternating exposures requested	N	N
[deg] Pointing Dec	0	3.992981497296486	[s] Primary exposure time	0.000000	3.2
[deg] Pointing Roll	0.0	312.8991769714802			
[mm] SIM focus pos	-0.782348	-0.7809083437167272			
[mm] SIM defocus	0	0.7524282956875696			
[mm] SIM translation stage pos	-233.592463	250.466033080201			
[mm] SIM translation stage offset	0	-0.01005468664627074			
[s] Observation start time (MET)	190568617.590296	190568616.56558			
Observation start date	2004-01-15T15:43:38	2004-01-15T15:43:36			
[s] Observation end time (MET)	190592262.291327	190592261.26661			
Observation end date	2004-01-15T22:17:42	2004-01-15T22:17:41			
Read mode	TIMED	TIMED			

2.3 Star Slots

2.4 FID Slots

A Summary

A.1 Status

V&V Scientist	Beth Sundheim
V&V Date (YYYY-MM-DD)	2012.12.18
V&V Edition	1
V&V Disposition and Status	OK
V&V Charge Time	8.4671999684572

A.2 Comments