

# V&V Reference Report

## L2 ASCDS Version : 7.6.7.2

Observation 60406 - L2 Version 001  
Chandra X-Ray Center

L2 Processing Date : Jun 7 2006

## Contents

<b>1</b>	<b>Front</b>	<b>2</b>
<b>2</b>	<b>OBI</b>	<b>3</b>
2.1	OBI . . . . .	3
2.1.1	Images . . . . .	3
2.1.2	Bias . . . . .	3
2.1.3	Parameters . . . . .	4
2.1.4	Events . . . . .	4
2.2	Compared Parameters . . . . .	5
2.3	Aspect . . . . .	6
2.4	Star Slots . . . . .	8
2.5	FID Slots . . . . .	8
<b>A</b>	<b>Summary</b>	<b>9</b>
A.1	Status . . . . .	9
A.2	Comments . . . . .	9

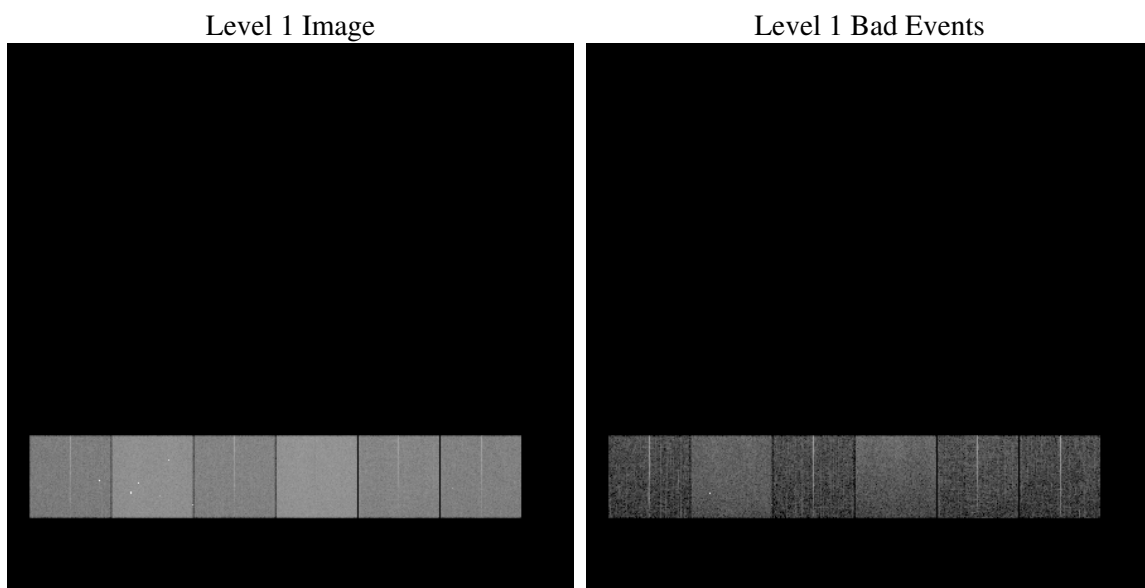
# 1 Front

seq_num	&#160
obs_id	60406
title	ACIS-456789 diagnostics
observer	CHANDRA engineering request/realtime commanding
object	&#160
dtcycle	0
cycle	P
ra_targ	0.0
dec_targ	0.0
ra_nom	183.00013210715
dec_nom	-49.971404114547
roll_nom	56.915350167175
revision	2
ontime	8460.7999684811
livetime	8353.664224798
ontime4	4845.2641501427
ontime5	8460.7999684811
ontime6	5412.3954153061
ontime7	8460.7999684811
ontime8	5581.0066643357
ontime9	5285.8737586737
l2events	1199440

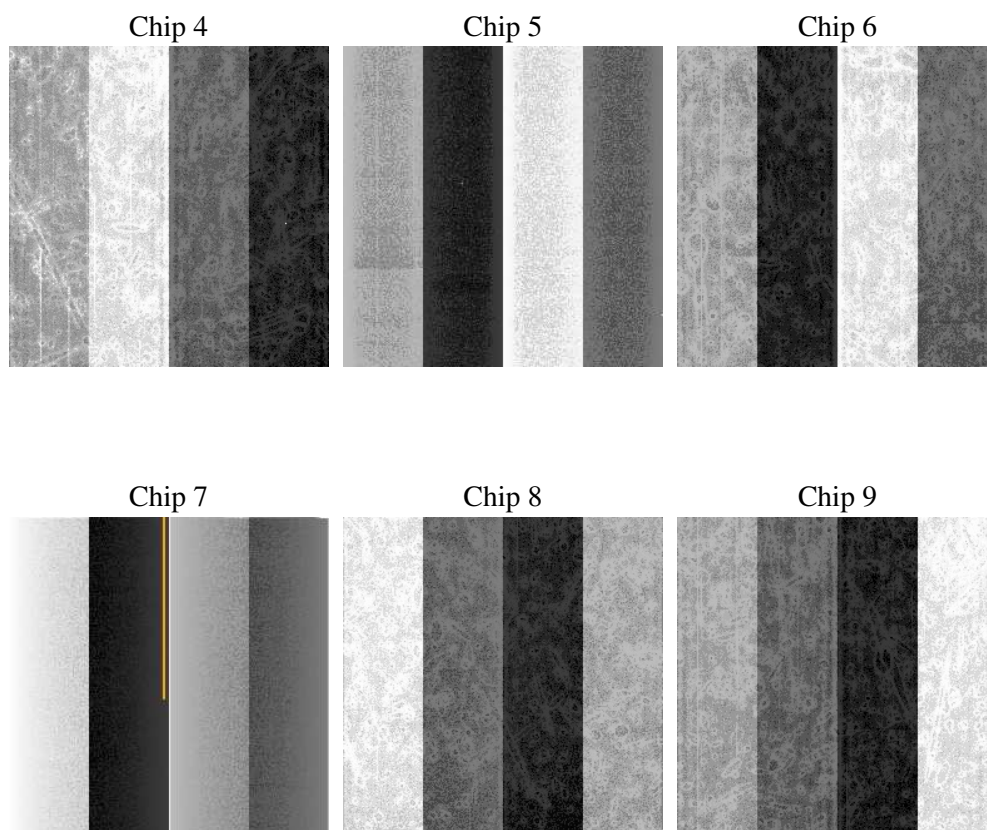
## 2 OBI

### 2.1 OBI

#### 2.1.1 Images



#### 2.1.2 Bias



### 2.1.3 Parameters

obi_num	1
ascdsver	7.6.7.2
caldbver	3.2.2
date	2006-06-07T08:38:39
revision	2

sched_exp_time	0.0
ontime	8462.2531788051
ontime4	4845.3305500746
ontime5	8462.2531788051
ontime6	5412.5028552413
ontime7	8462.2531788051
ontime8	5581.0320242941
ontime9	5286.1043186188
l1events	1533223

### 2.1.4 Events

	ccd 4	ccd 5	ccd 6	ccd 7	ccd 8	ccd 9
level 1 events	191470	322894	224151	346132	236823	211753
rejected events	34557	62537	35543	57401	40160	34910
rejected %	18%	19%	15%	16%	16%	16%

	ccd 4	ccd 5	ccd 6	ccd 7	ccd 8	ccd 9
grade 0 events	91475	30808	102939	50180	107423	97483
	47%	9%	45%	14%	45%	46%
grade 1 events	635	122	484	114	561	536
	0%	0%	0%	0%	0%	0%
grade 2 events	24993	123120	32714	87856	34600	30721
	13%	38%	14%	25%	14%	14%
grade 3 events	10329	8424	11550	20975	12798	11232
	5%	2%	5%	6%	5%	5%
grade 4 events	10247	7993	11662	20436	12734	11279
	5%	2%	5%	5%	5%	5%
grade 5 events	2065	6720	2539	7087	2970	2521
	1%	2%	1%	2%	1%	1%
grade 6 events	19869	90012	29743	109284	29108	26128
	10%	27%	13%	31%	12%	12%
grade 7 events	31857	55695	32520	50200	36629	31853
	16%	17%	14%	14%	15%	15%

## 2.2 Compared Parameters

Parameter	Planned	Actual	Parameter	Planned	Actual
Instrument	ACIS	ACIS	Obspar format version number	6	6
Detector	ACIS-456789	ACIS-456789	Obspar file type	PREDICTED	ACTUAL
Grating	NONE	NONE	Obspar update status	NONE	UPDATED
Data mode	FAINT	FAINT	On-chip summing requested	N	N
Observation mode	SECONDARY	SECONDARY	Subarray requested	NONE	NONE
Pointing RA	0	183.0001321071538	Alternating exposures requested	N	N
Pointing Dec	0	-49.97140411454719	Primary exposure time	0.000000	3.2
Pointing Roll	0.0	56.91535016717537			
SIM focus pos (mm)	-0.684267	-0.7809083437167272			
SIM defocus (mm)	0	0.7524282956875696			
SIM translation stage pos (mm)	-190.132523	250.466033080201			
SIM translation stage offset (mm)	0	-0.01005468664627074			
Observation start time	190794472.250143	190794471.22543			
Observation start date	2004-01-18T06:27:52	2004-01-18T06:27:51			
Observation end time	190817165.751133	190817164.72641			
Observation end date	2004-01-18T12:46:06	2004-01-18T12:46:04			
Read mode	TIMED	TIMED			

## 2.3 Aspect



## 2.4 Star Slots

## 2.5 FID Slots



## A Summary

### A.1 Status

V&V Scientist	Jen Lauer
V&V Date (YYYY-MM-DD)	2006.06.07
V&V Edition	1
V&V Disposition and Status	OK
V&V Charge Time	8.46079996

### A.2 Comments