

# V&V Reference Report

## L2 ASCDS Version : 7.6.7.2

Observation 60399 - L2 Version 001  
Chandra X-Ray Center

L2 Processing Date : Jun 7 2006

## Contents

<b>1</b>	<b>Front</b>	<b>2</b>
<b>2</b>	<b>OBI</b>	<b>3</b>
2.1	OBI . . . . .	3
2.1.1	Images . . . . .	3
2.1.2	Bias . . . . .	3
2.1.3	Parameters . . . . .	4
2.1.4	Events . . . . .	4
2.2	Compared Parameters . . . . .	5
2.3	Aspect . . . . .	6
2.4	Star Slots . . . . .	8
2.5	FID Slots . . . . .	8
<b>A</b>	<b>Summary</b>	<b>9</b>
A.1	Status . . . . .	9
A.2	Comments . . . . .	9

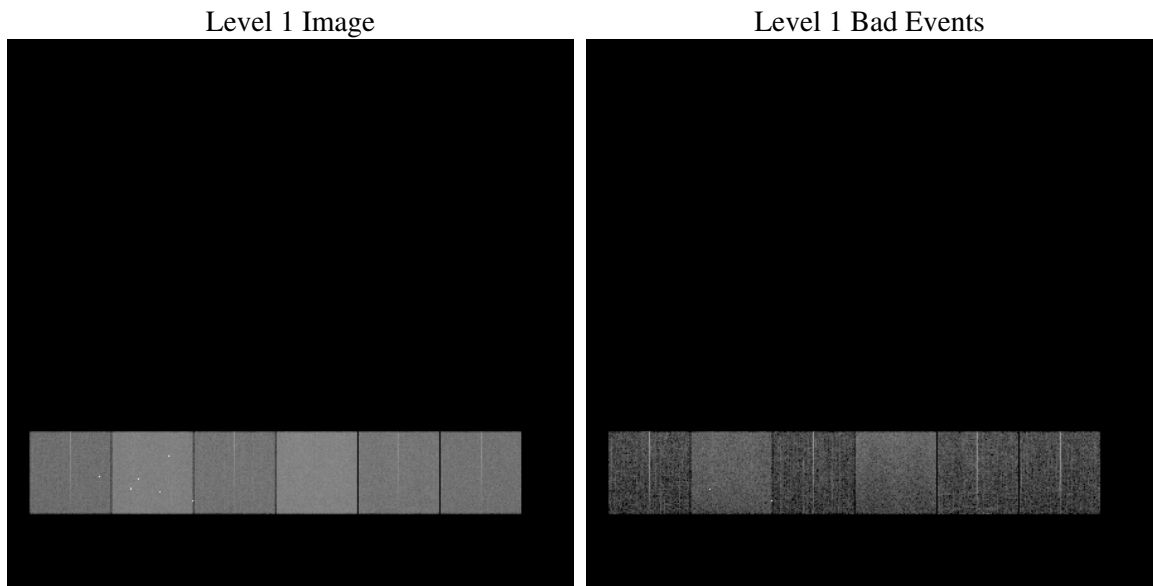
# 1 Front

seq_num	&#160
obs_id	60399
title	ACIS-456789 diagnostics
observer	CHANDRA engineering request/realtime commanding
object	&#160
dtcycle	0
cycle	P
ra_targ	0.0
dec_targ	0.0
ra_nom	154.99012742156
dec_nom	15.026977401024
roll_nom	76.586377694777
revision	2
ontime	7804.1957288086
livetime	7705.374303368
ontime4	4573.0592418313
ontime5	7804.2367688119
ontime6	4974.9004509449
ontime7	7804.1957288086
ontime8	5140.260319978
ontime9	4871.0664811134
l2events	1118004

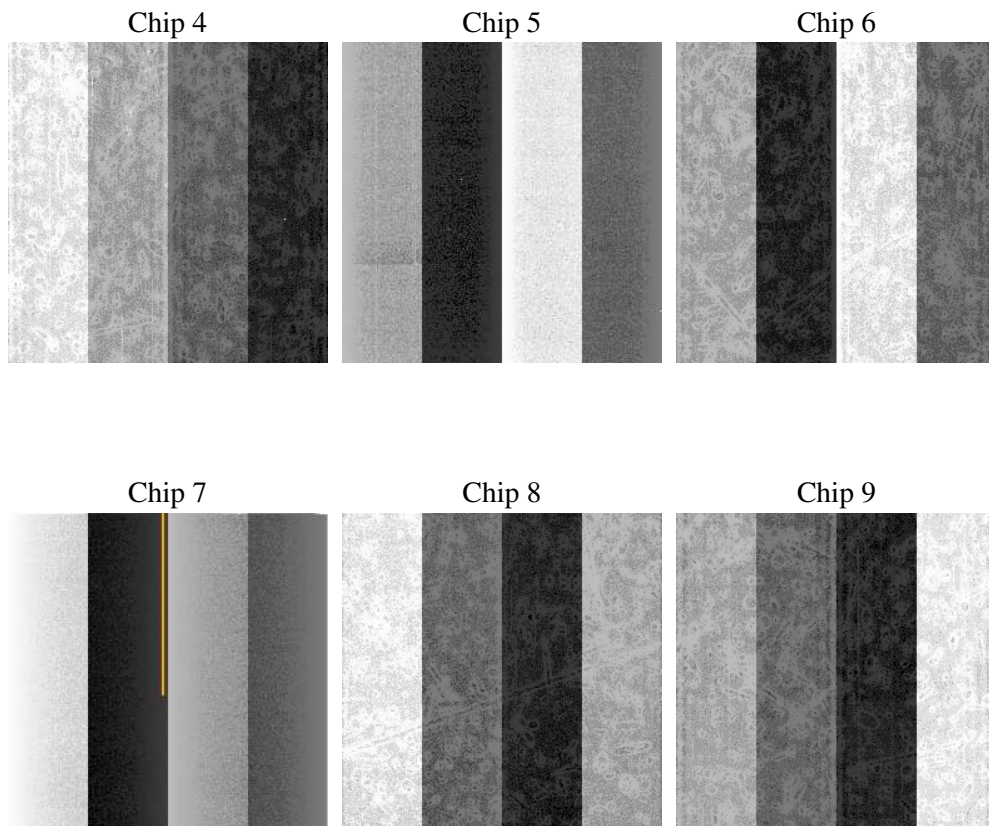
## 2 OBI

### 2.1 OBI

#### 2.1.1 Images



#### 2.1.2 Bias



### 2.1.3 Parameters

obi_num	1
ascdsver	7.6.7.2
caldbver	3.2.2
date	2006-06-07T09:15:37
revision	2

sched_exp_time	0.0
ontime	7804.3463804424
ontime4	4573.0867734551
ontime5	7804.3463804424
ontime6	4974.969022572
ontime7	7804.3463804424
ontime8	5140.260319978
ontime9	4871.2581727505
l1events	1417727

### 2.1.4 Events

	ccd 4	ccd 5	ccd 6	ccd 7	ccd 8	ccd 9
level 1 events	181184	298750	206230	316806	218292	196465
rejected events	30673	55297	30677	49701	34653	31211
rejected %	16%	18%	14%	15%	15%	15%

	ccd 4	ccd 5	ccd 6	ccd 7	ccd 8	ccd 9
grade 0 events	88446	31424	95821	46664	101134	91264
	48%	10%	46%	14%	46%	46%
grade 1 events	580	641	405	108	459	459
	0%	0%	0%	0%	0%	0%
grade 2 events	23158	114449	30077	81813	31719	28345
	12%	38%	14%	25%	14%	14%
grade 3 events	9788	7585	10974	19234	11877	10410
	5%	2%	5%	6%	5%	5%
grade 4 events	10008	7343	10793	18820	11738	10414
	5%	2%	5%	5%	5%	5%
grade 5 events	1958	6079	2241	6152	2488	2230
	1%	2%	1%	1%	1%	1%
grade 6 events	19111	82652	27888	100574	27171	24821
	10%	27%	13%	31%	12%	12%
grade 7 events	28135	48577	28031	43441	31706	28522
	15%	16%	13%	13%	14%	14%

## 2.2 Compared Parameters

Parameter	Planned	Actual	Parameter	Planned	Actual
Instrument	ACIS	ACIS	Obspar format version number	6	6
Detector	ACIS-456789	ACIS-456789	Obspar file type	PREDICTED	ACTUAL
Grating	NONE	NONE	Obspar update status	NONE	UPDATED
Data mode	FAINT	FAINT	On-chip summing requested	N	N
Observation mode	SECONDARY	SECONDARY	Subarray requested	NONE	NONE
Pointing RA	0	154.9901274215613	Alternating exposures requested	N	N
Pointing Dec	0	15.02697740102424	Primary exposure time	0.000000	3.2
Pointing Roll	0.0	76.5863776947774			
SIM focus pos (mm)	-0.684267	-0.6828225247311905			
SIM defocus (mm)	0	0.8505141146731063			
SIM translation stage pos (mm)	-190.132523	250.466033080201			
SIM translation stage offset (mm)	0	-0.01005468664627074			
Observation start time	191217438.518593	191217437.49388			
Observation start date	2004-01-23T03:57:19	2004-01-23T03:57:17			
Observation end time	191232577.769254	191232576.74454			
Observation end date	2004-01-23T08:09:38	2004-01-23T08:09:36			
Read mode	TIMED	TIMED			

## 2.3 Aspect



## **2.4 Star Slots**

## **2.5 FID Slots**



## A Summary

### A.1 Status

V&V Scientist	Jen Lauer
V&V Date (YYYY-MM-DD)	2006.06.07
V&V Edition	1
V&V Disposition and Status	OK
V&V Charge Time	7.80419572

### A.2 Comments