

V&V Reference Report

L2 ASCDS Version : 8.4.5

Observation 60395 - L2 Version 3
Chandra X-Ray Center

L2 Processing Date : Nov 10 2012

Contents

1	Front	2
2	OBI	3
2.1	OBI	3
2.1.1	Images	3
2.1.2	Bias	3
2.1.3	Parameters	4
2.1.4	Events	4
2.2	Compared Parameters	5
2.3	Star Slots	6
2.4	FID Slots	6
A	Summary	7
A.1	Status	7
A.2	Comments	7

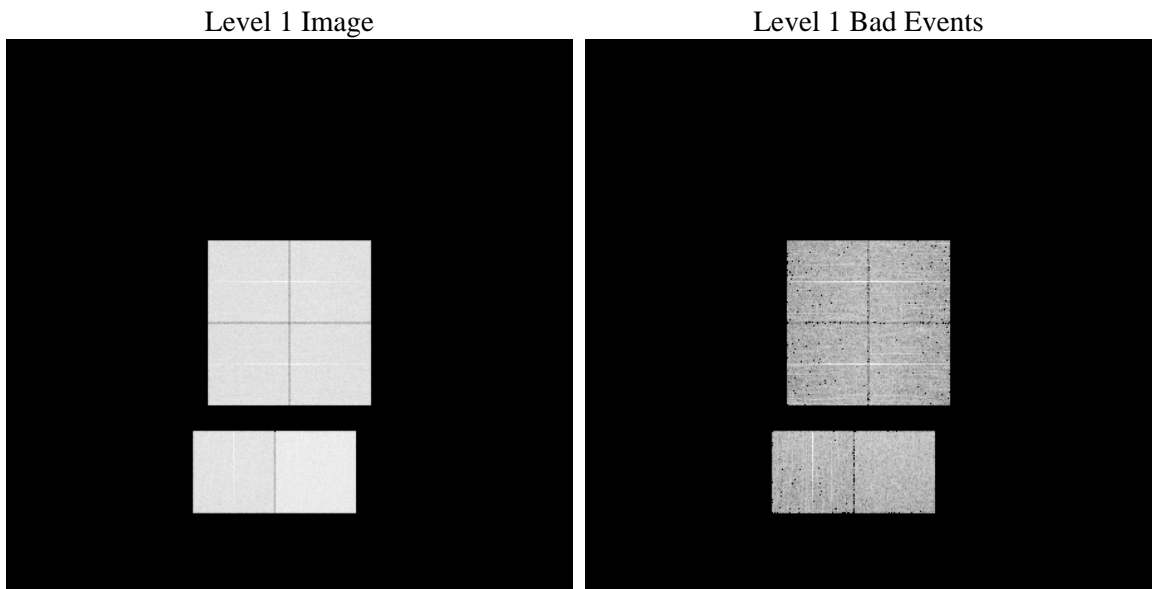
1 Front

seq_num	 	Sequence number
obs_id	60395	Observation id
title	ACIS-012367 diagnostics	Proposal title
observer	CHANDRA engineering request/realtime commanding	Principal investig
object	 	Source name
dtcycle	0	
cycle	P	events from which exps? Prim/Second/Both
ra_targ	0.0	Observer's specified target RA [deg]
dec_targ	0.0	Observer's specified target Dec [deg]
ra_nom	149.97257966315	Nominal RA [deg]
dec_nom	30.015974111971	Nominal Dec [deg]
roll_nom	113.14953662151	Nominal Roll [deg]
revision	3	Processing version of data
ontime	7809.725680083	Sum of GTIs [s]
livetime	7710.8342310696	Livetime [s]
ontime0	5602.5843938887	Sum of GTIs [s]
ontime1	5759.2822176218	Sum of GTIs [s]
ontime2	5450.1760132015	Sum of GTIs [s]
ontime3	5576.7380639017	Sum of GTIs [s]
ontime6	5855.2570141554	Sum of GTIs [s]
ontime7	7809.725680083	Sum of GTIs [s]
l2events	1164463	Number of level 2 events

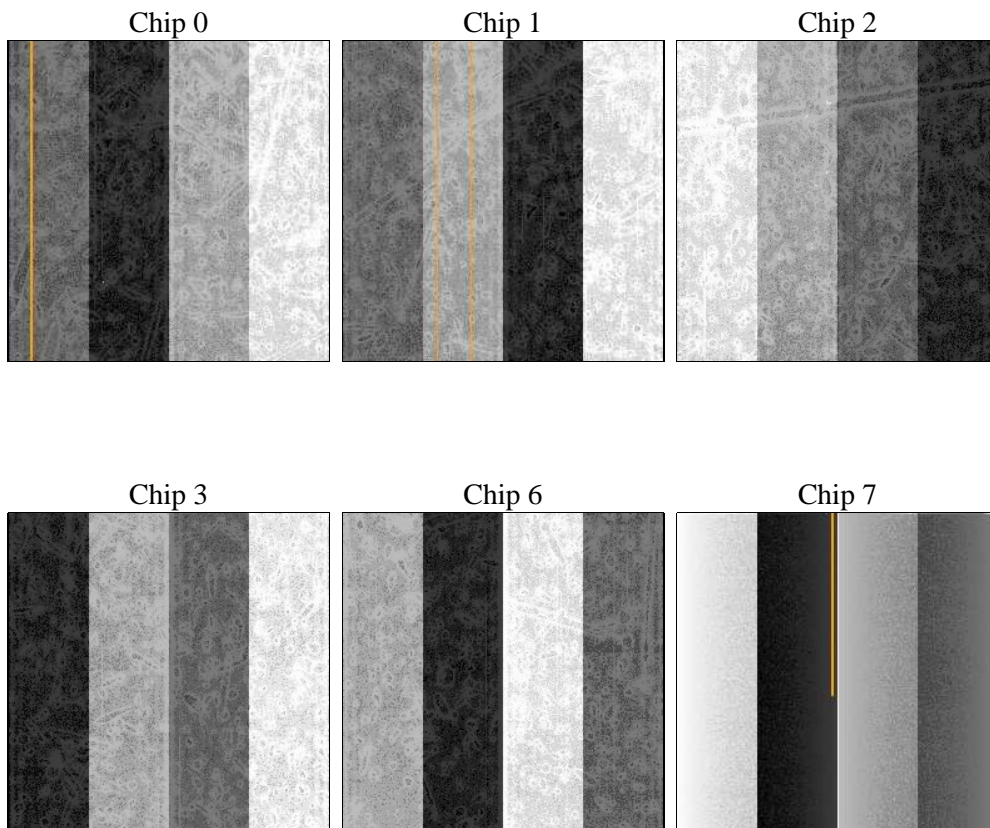
2 OBI

2.1 OBI

2.1.1 Images



2.1.2 Bias



2.1.3 Parameters

obi_num	0	Obi number	sched_exp_time	0.0	[s] Scheduled observation exposure time
ascdsver	8.4.5	Processing system revision	ontime	7809.725680083	Sum of GTIs [s]
caldsver	4.5.2	 	ontime0	5602.584393887	Sum of GTIs [s]
date	2012-11-11T00:53:49	Date and time of file creation	ontime1	5759.2822176218	Sum of GTIs [s]
revision	3	Processing version of data	ontime2	5450.1760132015	Sum of GTIs [s]
			ontime3	5576.7380639017	Sum of GTIs [s]
			ontime6	5855.2570141554	Sum of GTIs [s]
			ontime7	7809.725680083	Sum of GTIs [s]
			l1events	1419339	Number of level 1 events

2.1.4 Events

	ccd 0	ccd 1	ccd 2	ccd 3	ccd 6	ccd 7		ccd 0	ccd 1	ccd 2	ccd 3	ccd 6	ccd 7
level 1 events	217280	223103	212254	219030	235910	311762	grade 0 events	102665	104826	101664	104677	110083	68111
rejected events	31681	32442	30786	32784	33502	37548		47%	46%	47%	47%	46%	21%
rejected %	14%	14%	14%	14%	14%	12%	grade 1 events	526	499	557	525	552	155
								0%	0%	0%	0%	0%	0%
							grade 2 events	32508	33773	30860	31698	34994	61002
								14%	15%	14%	14%	14%	19%
							grade 3 events	11872	12131	11598	12180	12554	27734
								5%	5%	5%	5%	5%	8%
							grade 4 events	11811	12110	11894	11984	12507	27380
								5%	5%	5%	5%	5%	8%
							grade 5 events	2230	2254	2089	2329	2566	7243
								1%	1%	0%	1%	1%	2%
							grade 6 events	26743	27821	25452	25707	32270	89987
								12%	12%	11%	11%	13%	28%
							grade 7 events	28925	29689	28140	29930	30384	30150
								13%	13%	13%	13%	12%	9%

2.2 Compared Parameters

Parameter	Planned	Actual
Instrument	ACIS	ACIS
Detector	ACIS-012367	ACIS-012367
Grating	NONE	NONE
Data mode	FAINT	FAINT
Observation mode	SECONDARY	SECONDARY
[deg] Pointing RA	0	149.9725796631527
[deg] Pointing Dec	0	30.01597411197097
[deg] Pointing Roll	0.0	113.1495366215088
[mm] SIM focus pos	-0.782348	-0.6828225247311905
[mm] SIM defocus	0	0.8505141146731063
[mm] SIM translation stage pos	-233.592463	250.466033080201
[mm] SIM translation stage offset	0	-0.01005468664627074
[s] Observation start time (MET)	191443002.078434	191443001.05372
Observation start date	2004-01-25T18:36:42	2004-01-25T18:36:41
[s] Observation end time (MET)	191453645.678899	191453644.65418
Observation end date	2004-01-25T21:34:06	2004-01-25T21:34:04
Read mode	TIMED	TIMED

Parameter	Planned	Actual
Obspar format version number	7	7
Obspar file type	PREDICTED	ACTUAL
Obspar update status	NONE	UPDATED
On-chip summing requested	N	N
Subarray requested	NONE	NONE
Alternating exposures requested	N	N
[s] Primary exposure time	0.000000	3.2

2.3 Star Slots

2.4 FID Slots

A Summary

A.1 Status

V&V Scientist	Beth Sundheim
V&V Date (YYYY-MM-DD)	2012.12.18
V&V Edition	1
V&V Disposition and Status	OK
V&V Charge Time	7.809725680083

A.2 Comments