

V&V Reference Report

L2 ASCDS Version : 7.6.7.2

Observation 60395 - L2 Version 001
Chandra X-Ray Center

L2 Processing Date : Jun 7 2006

Contents

1	Front	2
2	OBI	3
2.1	OBI	3
2.1.1	Images	3
2.1.2	Bias	3
2.1.3	Parameters	4
2.1.4	Events	4
2.2	Compared Parameters	5
2.3	Aspect	6
2.4	Star Slots	8
2.5	FID Slots	8
A	Summary	9
A.1	Status	9
A.2	Comments	9

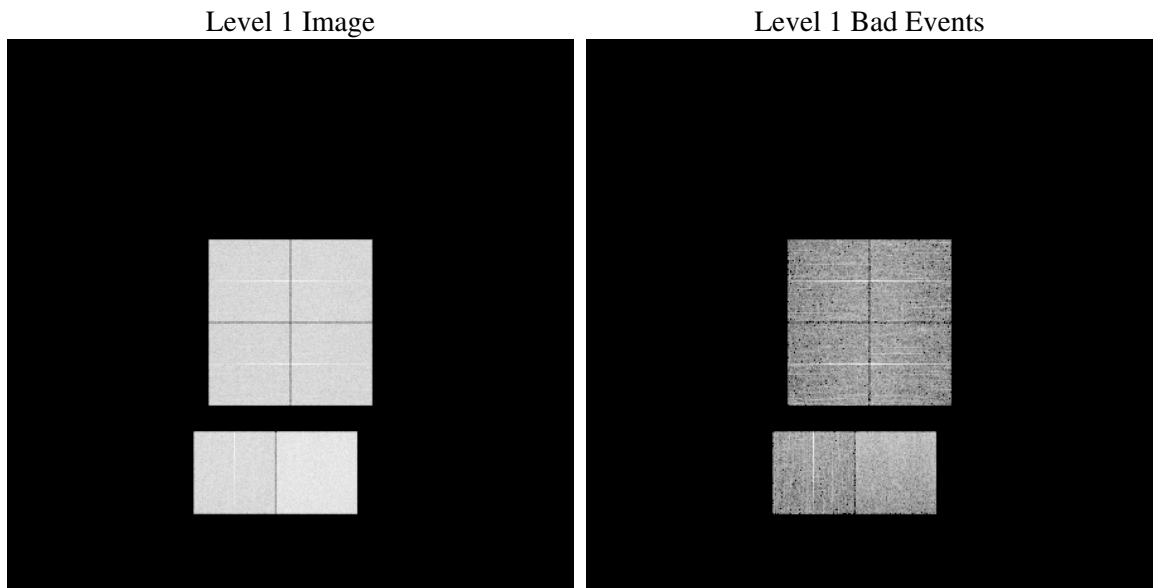
1 Front

seq_num	
obs_id	60395
title	ACIS-012367 diagnostics
observer	CHANDRA engineering request/realtime commanding
object	
dtcycle	0
cycle	P
ra_targ	0.0
dec_targ	0.0
ra_nom	149.97259224023
dec_nom	30.01594855799
roll_nom	113.1495303224
revision	2
ontime	7810.6902115941
livetime	7711.7865491019
ontime0	5603.6310054064
ontime1	5759.2385884523
ontime2	5451.3867847323
ontime3	5577.6205154061
ontime6	5856.5114148259
ontime7	7810.6902115941
l2events	1154910

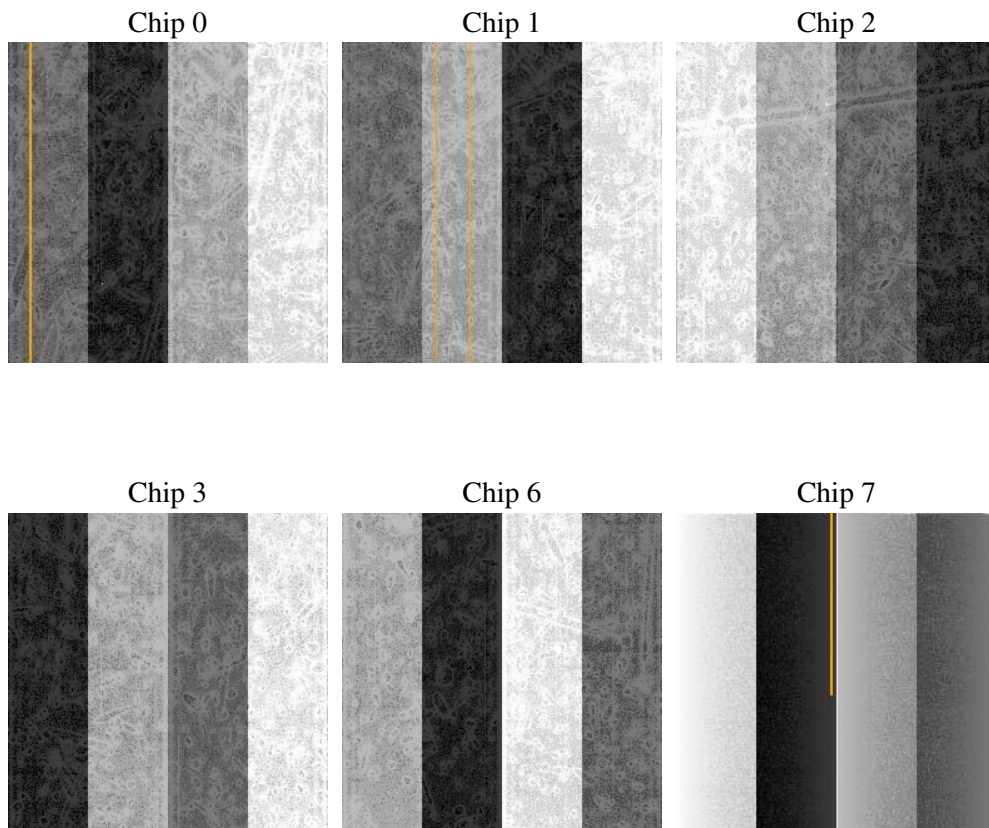
2 OBI

2.1 OBI

2.1.1 Images



2.1.2 Bias



2.1.3 Parameters

obi_num	0
ascdsver	7.6.7.2
caldbver	3.2.2
date	2006-06-07T09:40:38
revision	2

sched_exp_time	0.0
ontime	7810.8159207702
ontime0	5603.7156745791
ontime1	5759.2822176218
ontime2	5451.3893738985
ontime3	5577.7872645855
ontime6	5856.5114148259
ontime7	7810.8159207702
l1events	1419339

2.1.4 Events

	ccd 0	ccd 1	ccd 2	ccd 3	ccd 6	ccd 7
level 1 events	217280	223103	212254	219030	235910	311762
rejected events	31682	32443	30788	32784	33504	47238
rejected %	14%	14%	14%	14%	14%	15%

	ccd 0	ccd 1	ccd 2	ccd 3	ccd 6	ccd 7
grade 0 events	102656	104817	101651	104665	110069	47638
	47%	46%	47%	47%	46%	15%
grade 1 events	524	499	556	523	550	92
	0%	0%	0%	0%	0%	0%
grade 2 events	32516	33782	30873	31710	35009	79909
	14%	15%	14%	14%	14%	25%
grade 3 events	11868	12128	11595	12176	12550	19573
	5%	5%	5%	5%	5%	6%
grade 4 events	11807	12108	11893	11982	12502	19294
	5%	5%	5%	5%	5%	6%
grade 5 events	2231	2253	2087	2328	2566	6100
	1%	1%	0%	1%	1%	1%
grade 6 events	26751	27825	25454	25713	32276	98110
	12%	12%	11%	11%	13%	31%
grade 7 events	28927	29691	28145	29933	30388	41046
	13%	13%	13%	13%	12%	13%

2.2 Compared Parameters

Parameter	Planned	Actual	Parameter	Planned	Actual
Instrument	ACIS	ACIS	Obspar format version number	6	6
Detector	ACIS-012367	ACIS-012367	Obspar file type	PREDICTED	ACTUAL
Grating	NONE	NONE	Obspar update status	NONE	UPDATED
Data mode	FAINT	FAINT	On-chip summing requested	N	N
Observation mode	SECONDARY	SECONDARY	Subarray requested	NONE	NONE
Pointing RA	0	149.9725922402288	Alternating exposures requested	N	N
Pointing Dec	0	30.01594855798979	Primary exposure time	0.000000	3.2
Pointing Roll	0.0	113.1495303223974			
SIM focus pos (mm)	-0.782348	-0.6828225247311905			
SIM defocus (mm)	0	0.8505141146731063			
SIM translation stage pos (mm)	-233.592463	250.466033080201			
SIM translation stage offset (mm)	0	-0.01005468664627074			
Observation start time	191443002.078434	191443001.05372			
Observation start date	2004-01-25T18:36:42	2004-01-25T18:36:41			
Observation end time	191453645.678899	191453644.65418			
Observation end date	2004-01-25T21:34:06	2004-01-25T21:34:04			
Read mode	TIMED	TIMED			

2.3 Aspect

2.4 Star Slots

2.5 FID Slots

A Summary

A.1 Status

V&V Scientist	Jen Lauer
V&V Date (YYYY-MM-DD)	2006.06.07
V&V Edition	1
V&V Disposition and Status	OK
V&V Charge Time	7.81069021

A.2 Comments