

V&V Reference Report

L2 ASCDS Version : 8.4.5

Observation 60389 - L2 Version 3
Chandra X-Ray Center

L2 Processing Date : Nov 11 2012

Contents

1	Front	2
2	OBI	3
2.1	OBI	3
2.1.1	Images	3
2.1.2	Bias	3
2.1.3	Parameters	4
2.1.4	Events	4
2.2	Compared Parameters	5
2.3	Star Slots	6
2.4	FID Slots	6
A	Summary	7
A.1	Status	7
A.2	Comments	7

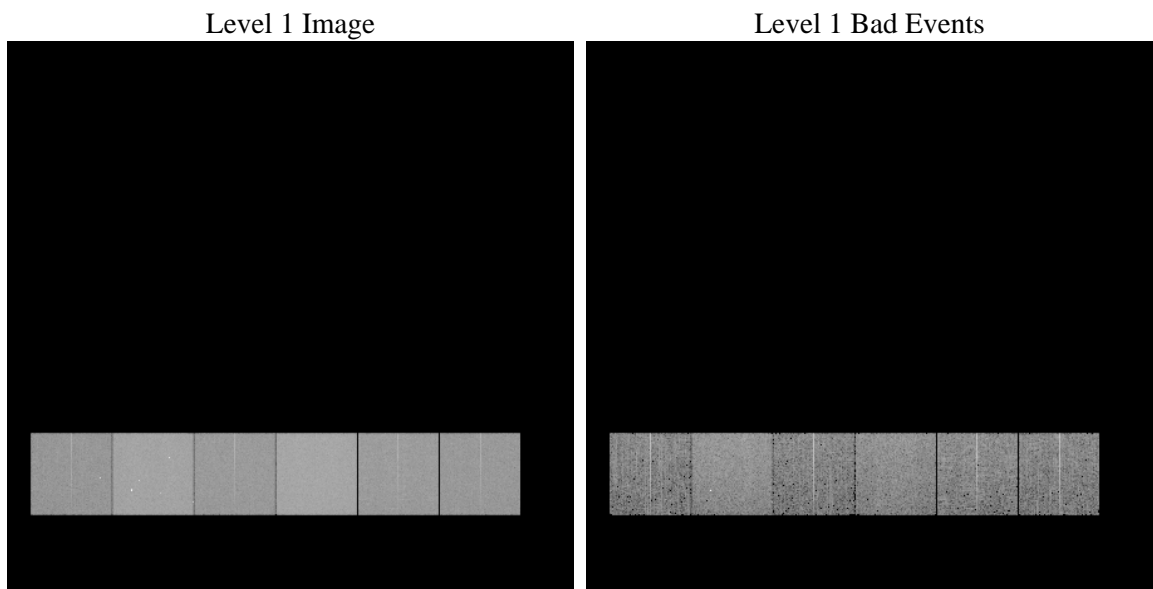
1 Front

seq_num	 	Sequence number
obs_id	60389	Observation id
title	ACIS-456789 diagnostics	Proposal title
observer	CHANDRA engineering request/realtime commanding	Principal investig
object	 	Source name
dtcycle	0	
cycle	P	events from which exps? Prim/Second/Both
ra_targ	0.0	Observer's specified target RA [deg]
dec_targ	0.0	Observer's specified target Dec [deg]
ra_nom	118.73003163214	Nominal RA [deg]
dec_nom	-21.293973158114	Nominal Dec [deg]
roll_nom	339.28442417594	Nominal Roll [deg]
revision	3	Processing version of data
ontime	7801.5999709368	Sum of GTIs [s]
livetime	7702.8114145452	Livetime [s]
ontime4	4687.0233603716	Sum of GTIs [s]
ontime5	7801.5999709368	Sum of GTIs [s]
ontime6	5118.0743093789	Sum of GTIs [s]
ontime7	7801.5999709368	Sum of GTIs [s]
ontime8	5257.4371469617	Sum of GTIs [s]
ontime9	4933.3377894461	Sum of GTIs [s]
l2events	1131925	Number of level 2 events

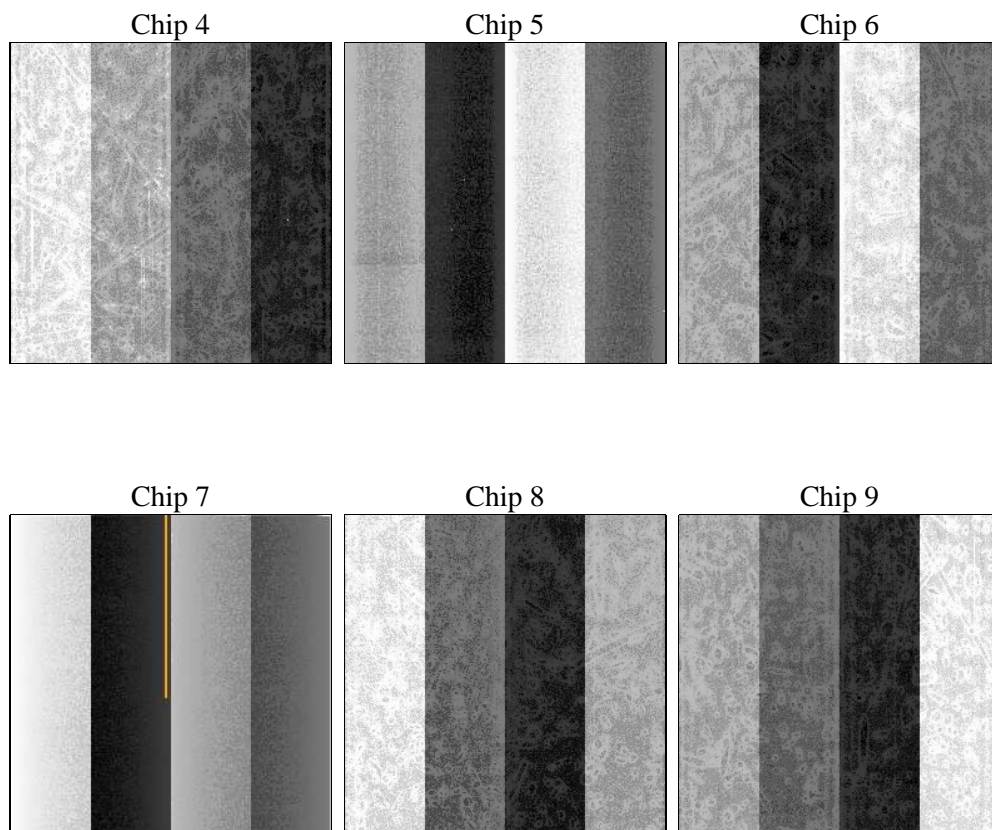
2 OBI

2.1 OBI

2.1.1 Images



2.1.2 Bias



2.1.3 Parameters

obi_num	0	Obi number	sched_exp_time	0.0	[s] Scheduled observation exposure time
ascdsver	8.4.5	Processing system revision	ontime	7801.5999709368	Sum of GTIs [s]
caldsver	4.5.2	 	ontime4	4687.0233603716	Sum of GTIs [s]
date	2012-11-11T13:56:31	Date and time of file creation	ontime5	7801.5999709368	Sum of GTIs [s]
revision	3	Processing version of data	ontime6	5118.0743093789	Sum of GTIs [s]
			ontime7	7801.5999709368	Sum of GTIs [s]
			ontime8	5257.4371469617	Sum of GTIs [s]
			ontime9	4933.3377894461	Sum of GTIs [s]
			l1events	1417206	Number of level 1 events

2.1.4 Events

	ccd 4	ccd 5	ccd 6	ccd 7	ccd 8	ccd 9		ccd 4	ccd 5	ccd 6	ccd 7	ccd 8	ccd 9
level 1 events	182925	292620	209595	314390	220697	196979	grade 0 events	88450	55768	97236	68735	101356	91417
rejected events	32638	48579	31853	39875	36771	32536		48%	19%	46%	21%	45%	46%
rejected %	17%	16%	15%	12%	16%	16%	grade 1 events	579	430	419	209	487	487
								0%	0%	0%	0%	0%	0%
							grade 2 events	23196	89013	31124	61538	32144	27925
								12%	30%	14%	19%	14%	14%
							grade 3 events	9952	14611	10848	27513	11782	10555
								5%	4%	5%	8%	5%	5%
							grade 4 events	9902	14190	10920	27211	11910	10370
								5%	4%	5%	8%	5%	5%
							grade 5 events	2003	8172	2350	7411	2743	2349
								1%	2%	1%	2%	1%	1%
							grade 6 events	18886	70570	27720	89659	26858	24276
								10%	24%	13%	28%	12%	12%
							grade 7 events	29957	39866	28978	32114	33417	29600
								16%	13%	13%	10%	15%	15%

2.2 Compared Parameters

Parameter	Planned	Actual	Parameter	Planned	Actual
Instrument	ACIS	ACIS	Obspar format version number	7	7
Detector	ACIS-456789	ACIS-456789	Obspar file type	PREDICTED	ACTUAL
Grating	NONE	NONE	Obspar update status	NONE	UPDATED
Data mode	FAINT	FAINT	On-chip summing requested	N	N
Observation mode	SECONDARY	SECONDARY	Subarray requested	NONE	NONE
[deg] Pointing RA	0	118.7300316321441	Alternating exposures requested	N	N
[deg] Pointing Dec	0	-21.29397315811363	[s] Primary exposure time	0.000000	3.2
[deg] Pointing Roll	0.0	339.2844241759375			
[mm] SIM focus pos	-0.684267	-0.6828225247311905			
[mm] SIM defocus	0	0.8505141146731063			
[mm] SIM translation stage pos	-190.132523	250.466033080201			
[mm] SIM translation stage offset	0	-0.01005468664627074			
[s] Observation start time (MET)	191902905.248516	191902904.22381			
Observation start date	2004-01-31T02:21:45	2004-01-31T02:21:44			
[s] Observation end time (MET)	191940612.950163	191940611.92546			
Observation end date	2004-01-31T12:50:13	2004-01-31T12:50:11			
Read mode	TIMED	TIMED			

2.3 Star Slots

2.4 FID Slots

A Summary

A.1 Status

V&V Scientist	Beth Sundheim
V&V Date (YYYY-MM-DD)	2012.12.19
V&V Edition	1
V&V Disposition and Status	OK
V&V Charge Time	7.8015999709368

A.2 Comments