

V&V Reference Report

L2 ASCDS Version : 7.6.7.2

Observation 60389 - L2 Version 001
Chandra X-Ray Center

L2 Processing Date : Jun 4 2006

Contents

1	Front	2
2	OBI	3
2.1	OBI	3
2.1.1	Images	3
2.1.2	Bias	3
2.1.3	Parameters	4
2.1.4	Events	4
2.2	Compared Parameters	5
2.3	Aspect	6
2.4	Star Slots	8
2.5	FID Slots	8
A	Summary	9
A.1	Status	9
A.2	Comments	9

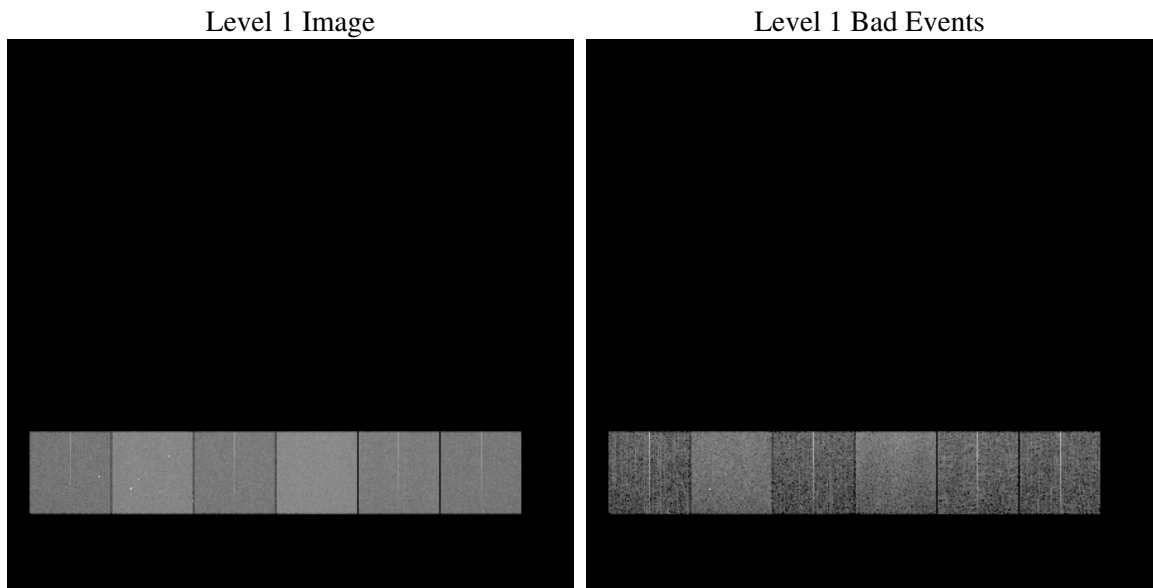
1 Front

seq_num	
obs_id	60389
title	ACIS-456789 diagnostics
observer	CHANDRA engineering request/realtime commanding
object	
dtcycle	0
cycle	P
ra_targ	0.0
dec_targ	0.0
ra_nom	118.73000375956
dec_nom	-21.293963297144
roll_nom	339.28441404966
revision	2
ontime	7801.5999709368
livetime	7702.8114145452
ontime4	4687.0233603716
ontime5	7801.5999709368
ontime6	5118.0743093789
ontime7	7801.5999709368
ontime8	5257.4371469617
ontime9	4933.3377894461
l2events	1116472

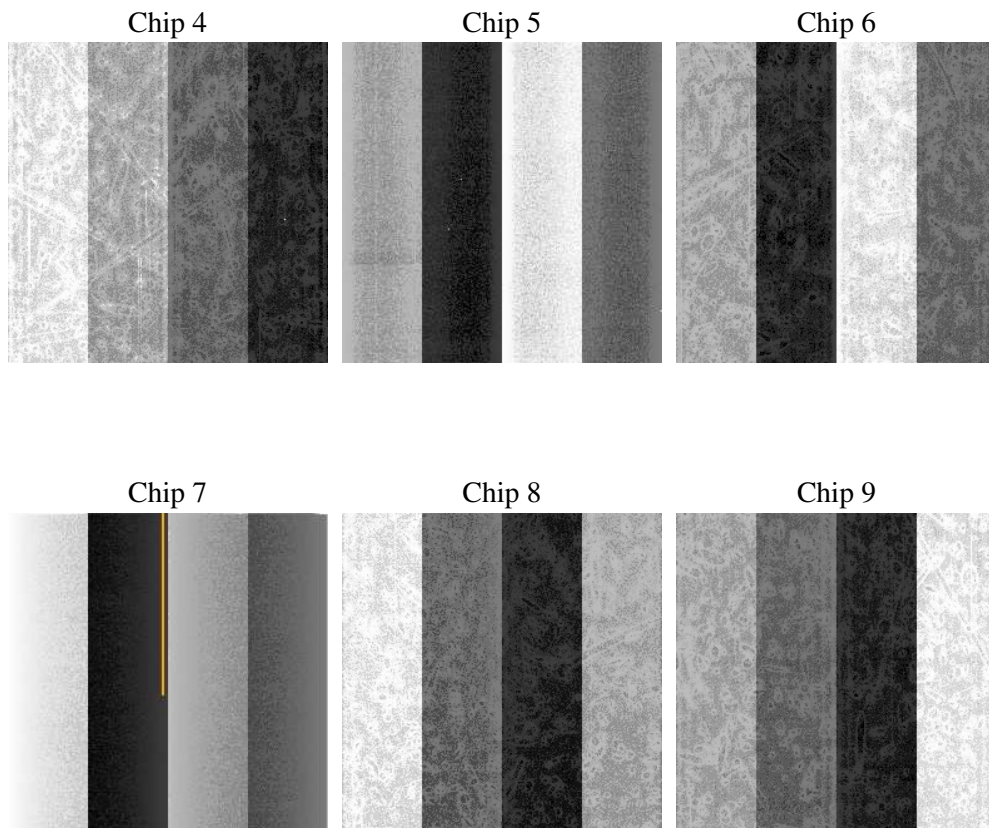
2 OBI

2.1 OBI

2.1.1 Images



2.1.2 Bias



2.1.3 Parameters

obi_num	0
ascdsver	7.6.7.2
caldbver	3.2.2
date	2006-06-05T00:01:17
revision	2

sched_exp_time	0.0
ontime	7804.3361108303
ontime4	4689.7595002651
ontime5	7804.3361108303
ontime6	5120.8104492724
ontime7	7804.3361108303
ontime8	5260.1732868552
ontime9	4936.0739293396
l1events	1417206

2.1.4 Events

	ccd 4	ccd 5	ccd 6	ccd 7	ccd 8	ccd 9
level 1 events	182925	292620	209595	314390	220697	196979
rejected events	32646	54937	31870	49323	36766	32544
rejected %	17%	18%	15%	15%	16%	16%

	ccd 4	ccd 5	ccd 6	ccd 7	ccd 8	ccd 9
grade 0 events	88406	28913	97176	48512	101310	91390
	48%	9%	46%	15%	45%	46%
grade 1 events	575	330	412	120	484	484
	0%	0%	0%	0%	0%	0%
grade 2 events	23240	112232	31187	80177	32189	27954
	12%	38%	14%	25%	14%	14%
grade 3 events	9930	7895	10833	19702	11770	10539
	5%	2%	5%	6%	5%	5%
grade 4 events	9887	7568	10904	19263	11899	10353
	5%	2%	5%	6%	5%	5%
grade 5 events	2000	5919	2352	6177	2740	2350
	1%	2%	1%	1%	1%	1%
grade 6 events	18915	81165	27737	97532	26878	24302
	10%	27%	13%	31%	12%	12%
grade 7 events	29972	48598	28994	42907	33427	29607
	16%	16%	13%	13%	15%	15%

2.2 Compared Parameters

Parameter	Planned	Actual	Parameter	Planned	Actual
Instrument	ACIS	ACIS	Obspar format version number	6	6
Detector	ACIS-456789	ACIS-456789	Obspar file type	PREDICTED	ACTUAL
Grating	NONE	NONE	Obspar update status	NONE	UPDATED
Data mode	FAINT	FAINT	On-chip summing requested	N	N
Observation mode	SECONDARY	SECONDARY	Subarray requested	NONE	NONE
Pointing RA	0	118.7300037595556	Alternating exposures requested	N	N
Pointing Dec	0	-21.2939632971441	Primary exposure time	0.000000	3.2
Pointing Roll	0.0	339.2844140496605			
SIM focus pos (mm)	-0.684267	-0.6828225247311905			
SIM defocus (mm)	0	0.8505141146731063			
SIM translation stage pos (mm)	-190.132523	250.466033080201			
SIM translation stage offset (mm)	0	-0.01005468664627074			
Observation start time	191902905.248516	191902904.22381			
Observation start date	2004-01-31T02:21:45	2004-01-31T02:21:44			
Observation end time	191940612.950163	191940611.92546			
Observation end date	2004-01-31T12:50:13	2004-01-31T12:50:11			
Read mode	TIMED	TIMED			

2.3 Aspect

2.4 Star Slots

2.5 FID Slots

A Summary

A.1 Status

V&V Scientist	Jen Lauer
V&V Date (YYYY-MM-DD)	2006.06.05
V&V Edition	1
V&V Disposition and Status	OK
V&V Charge Time	7.80159997

A.2 Comments