

V&V Reference Report

L2 ASCDS Version : 8.4.5

Observation 60387 - L2 Version 3
Chandra X-Ray Center

L2 Processing Date : Nov 11 2012

Contents

1	Front	2
2	OBI	3
2.1	OBI	3
2.1.1	Images	3
2.1.2	Bias	3
2.1.3	Parameters	4
2.1.4	Events	4
2.2	Compared Parameters	5
2.3	Star Slots	6
2.4	FID Slots	6
A	Summary	7
A.1	Status	7
A.2	Comments	7

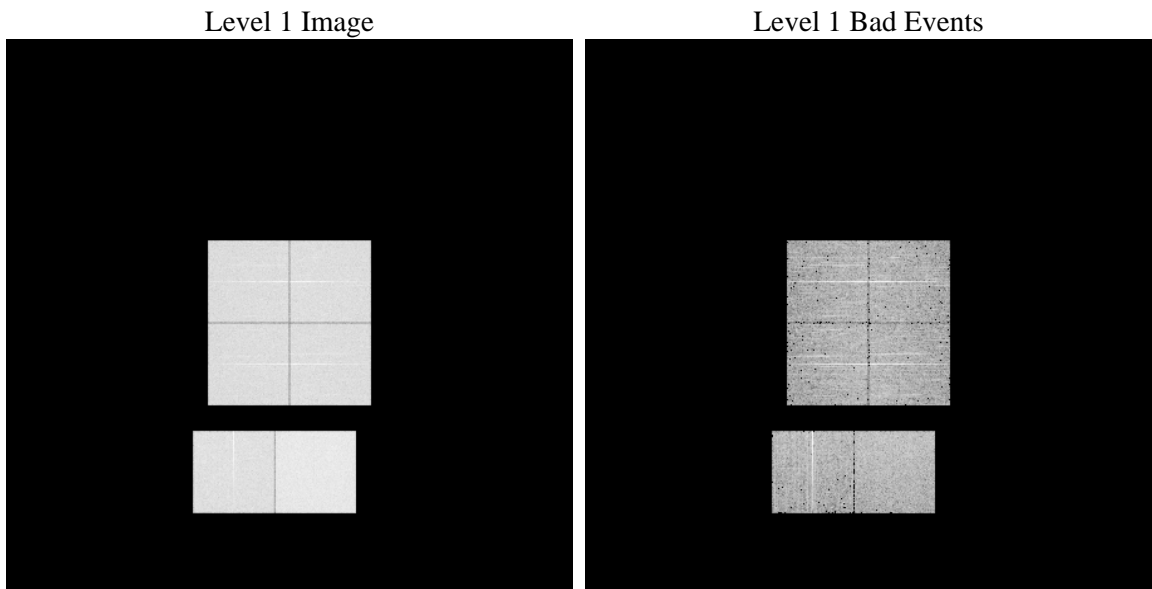
1 Front

seq_num	 	Sequence number
obs_id	60387	Observation id
title	ACIS-012367 diagnostics	Proposal title
observer	CHANDRA engineering request/realtime commanding	Principal investig
object	 	Source name
dtcycle	0	
cycle	P	events from which exps? Prim/Second/Both
ra_targ	0.0	Observer's specified target RA [deg]
dec_targ	0.0	Observer's specified target Dec [deg]
ra_nom	148.99059068972	Nominal RA [deg]
dec_nom	14.027116506945	Nominal Dec [deg]
roll_nom	75.743846658793	Nominal Roll [deg]
revision	3	Processing version of data
ontime	7804.7999709249	Sum of GTIs [s]
livetime	7705.9708942067	Livetime [s]
ontime0	5500.4392966032	Sum of GTIs [s]
ontime1	5681.5055209994	Sum of GTIs [s]
ontime2	5409.610306114	Sum of GTIs [s]
ontime3	5526.3909489214	Sum of GTIs [s]
ontime6	5882.7523469925	Sum of GTIs [s]
ontime7	7804.7999709249	Sum of GTIs [s]
l2events	1150283	Number of level 2 events

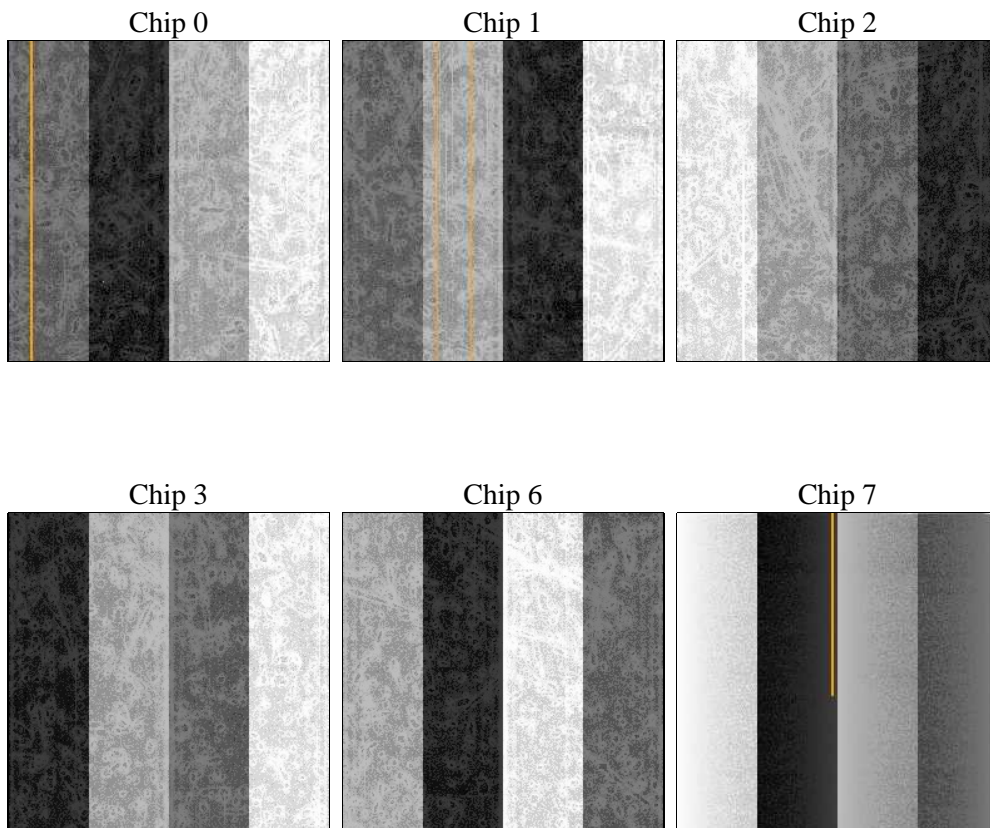
2 OBI

2.1 OBI

2.1.1 Images



2.1.2 Bias



2.1.3 Parameters

obi_num	0	Obi number	sched_exp_time	0.0	[s] Scheduled observation exposure time
ascdsver	8.4.5	Processing system revision	ontime	7804.7999709249	Sum of GTIs [s]
caldsver	4.5.2	 	ontime0	5500.4392966032	Sum of GTIs [s]
date	2012-11-11T13:58:14	Date and time of file creation	ontime1	5681.5055209994	Sum of GTIs [s]
revision	3	Processing version of data	ontime2	5409.610306114	Sum of GTIs [s]
			ontime3	5526.3909489214	Sum of GTIs [s]
			ontime6	5882.7523469925	Sum of GTIs [s]
			ontime7	7804.7999709249	Sum of GTIs [s]
			l1events	1418269	Number of level 1 events

2.1.4 Events

	ccd 0	ccd 1	ccd 2	ccd 3	ccd 6	ccd 7		ccd 0	ccd 1	ccd 2	ccd 3	ccd 6	ccd 7
level 1 events	213215	220177	213769	218246	239388	313474	grade 0 events	99532	102945	101022	103531	110537	67784
rejected events	33044	33206	33916	34815	36855	40227		46%	46%	47%	47%	46%	21%
rejected %	15%	15%	15%	15%	15%	12%	grade 1 events	492	453	530	568	467	176
								0%	0%	0%	0%	0%	0%
							grade 2 events	31616	33116	30343	31523	34996	60833
								14%	15%	14%	14%	14%	19%
							grade 3 events	11650	11753	11741	11787	12627	27504
								5%	5%	5%	5%	5%	8%
							grade 4 events	11534	11945	11840	11907	12354	27203
								5%	5%	5%	5%	5%	8%
							grade 5 events	2205	2264	2100	2442	2598	7640
								1%	1%	0%	1%	1%	2%
							grade 6 events	25930	27212	25034	24791	32135	90039
								12%	12%	11%	11%	13%	28%
							grade 7 events	30256	30489	31159	31697	33674	32295
								14%	13%	14%	14%	14%	10%

2.2 Compared Parameters

Parameter	Planned	Actual
Instrument	ACIS	ACIS
Detector	ACIS-012367	ACIS-012367
Grating	NONE	NONE
Data mode	FAINT	FAINT
Observation mode	SECONDARY	SECONDARY
[deg] Pointing RA	0	148.9905906897223
[deg] Pointing Dec	0	14.02711650694509
[deg] Pointing Roll	0.0	75.74384665879268
[mm] SIM focus pos	-0.782348	-0.6828225247311905
[mm] SIM defocus	0	0.8505141146731063
[mm] SIM translation stage pos	-233.592463	250.466033080201
[mm] SIM translation stage offset	0	-0.01005468664627074
[s] Observation start time (MET)	192127185.508313	192127184.48361
Observation start date	2004-02-02T16:39:46	2004-02-02T16:39:44
[s] Observation end time (MET)	192164561.109946	192164560.08524
Observation end date	2004-02-03T03:02:41	2004-02-03T03:02:40
Read mode	TIMED	TIMED

Parameter	Planned	Actual
Obspar format version number	7	7
Obspar file type	PREDICTED	ACTUAL
Obspar update status	NONE	UPDATED
On-chip summing requested	N	N
Subarray requested	NONE	NONE
Alternating exposures requested	N	N
[s] Primary exposure time	0.000000	3.2

2.3 Star Slots

2.4 FID Slots

A Summary

A.1 Status

V&V Scientist	Beth Sundheim
V&V Date (YYYY-MM-DD)	2012.12.19
V&V Edition	1
V&V Disposition and Status	OK
V&V Charge Time	7.8047999709249

A.2 Comments