

# V&V Reference Report

## L2 ASCDS Version : 7.6.7.2

Observation 60386 - L2 Version 001  
Chandra X-Ray Center

L2 Processing Date : Jun 4 2006

## Contents

|          |                               |          |
|----------|-------------------------------|----------|
| <b>1</b> | <b>Front</b>                  | <b>2</b> |
| <b>2</b> | <b>OBI</b>                    | <b>3</b> |
| 2.1      | OBI . . . . .                 | 3        |
| 2.1.1    | Images . . . . .              | 3        |
| 2.1.2    | Bias . . . . .                | 3        |
| 2.1.3    | Parameters . . . . .          | 4        |
| 2.1.4    | Events . . . . .              | 4        |
| 2.2      | Compared Parameters . . . . . | 5        |
| 2.3      | Aspect . . . . .              | 6        |
| 2.4      | Star Slots . . . . .          | 8        |
| 2.5      | FID Slots . . . . .           | 8        |
| <b>A</b> | <b>Summary</b>                | <b>9</b> |
| A.1      | Status . . . . .              | 9        |
| A.2      | Comments . . . . .            | 9        |

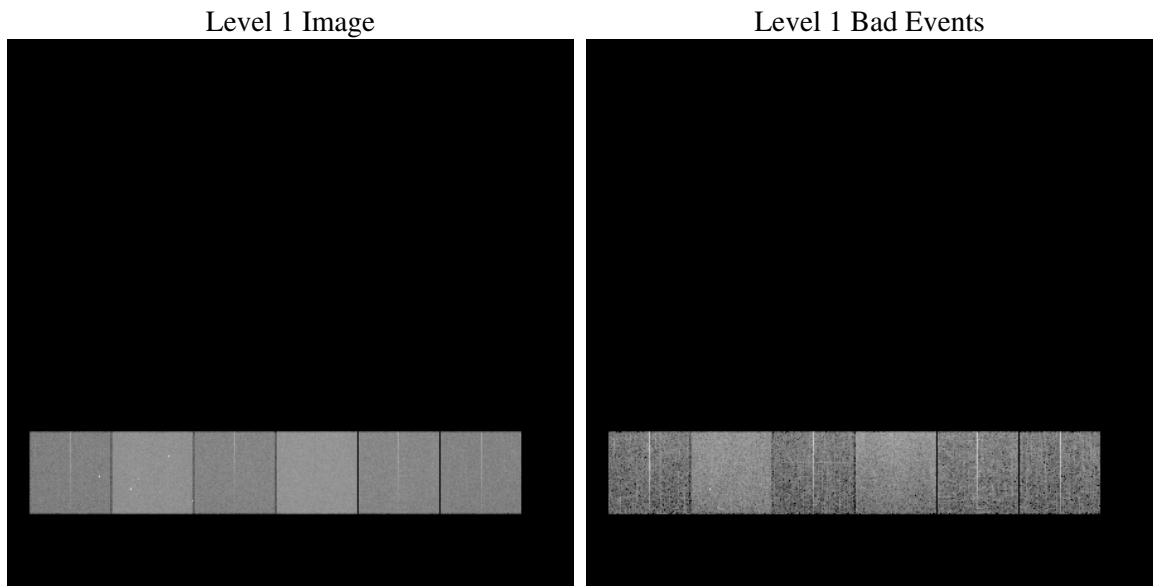
# 1 Front

|          |   |
|----------|---|
| seq_num  | &#160   |
| obs_id   | 60386   |
| title    | ACIS-456789 diagnostics                         |
| observer | CHANDRA engineering request/realtime commanding |
| object   | &#160   |
| dtcycle  | 0   |
| cycle    | P   |
| ra_targ  | 0.0   |
| dec_targ | 0.0   |
| ra_nom   | 224.49199142964                                 |
| dec_nom  | -5.9725418641544                                |
| roll_nom | 73.260309993623                                 |
| revision | 2   |
| ontime   | 8463.9999684691                                 |
| livetime | 8356.8237044595                                 |
| ontime4  | 5151.7296402454                                 |
| ontime5  | 8463.9999684691                                 |
| ontime6  | 5462.8634026349                                 |
| ontime7  | 8463.9999684691                                 |
| ontime8  | 5696.1992003918                                 |
| ontime9  | 5339.7073806524                                 |
| l2events | 1207949   |

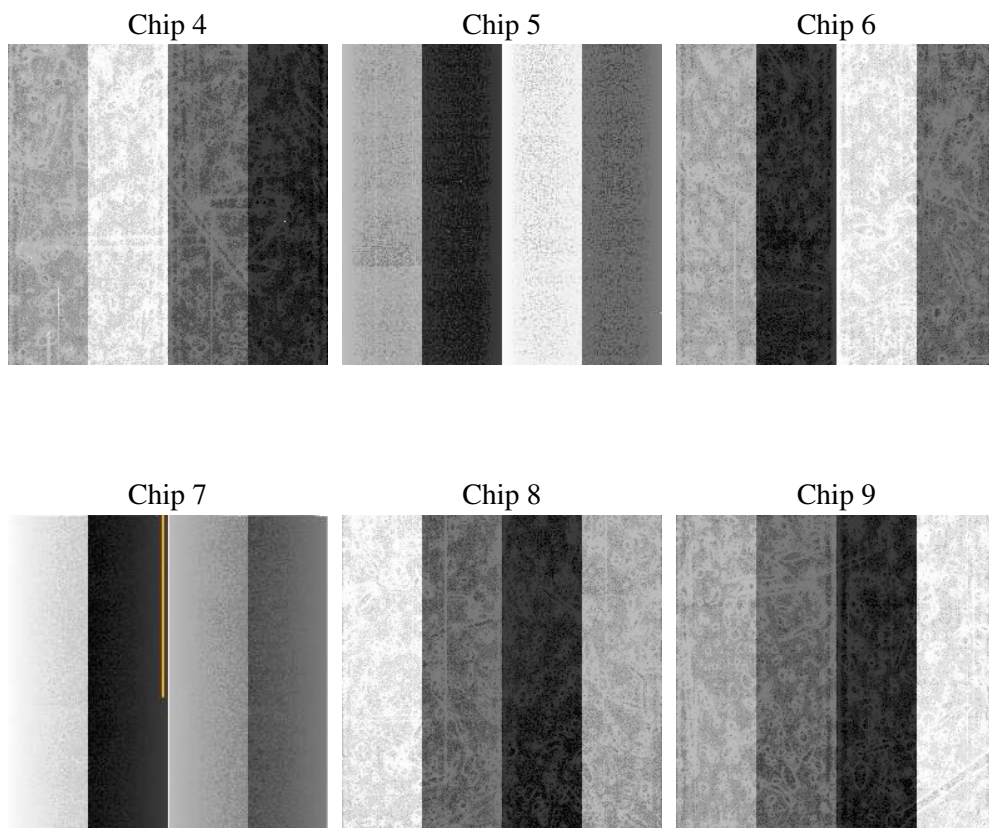
## 2 OBI

### 2.1 OBI

#### 2.1.1 Images



#### 2.1.2 Bias



### 2.1.3 Parameters

|          |                     |
|----------|---------------------|
| obi_num  | 0                   |
| ascdsver | 7.6.7.2             |
| caldsver | 3.2.2               |
| date     | 2006-06-05T00:25:23 |
| revision | 2                   |

|                |                 |
|----------------|-----------------|
| sched_exp_time | 0.0             |
| ontime         | 8465.4934298694 |
| ontime4        | 5153.2231016457 |
| ontime5        | 8465.4934298694 |
| ontime6        | 5464.3568640351 |
| ontime7        | 8465.4934298694 |
| ontime8        | 5697.7069323957 |
| ontime9        | 5341.2008420527 |
| l1events       | 1534209         |

### 2.1.4 Events

|                 | ccd 4  | ccd 5  | ccd 6  | ccd 7  | ccd 8  | ccd 9  |
|-----------------|--------|--------|--------|--------|--------|--------|
| level 1 events  | 200101 | 316172 | 223548 | 340159 | 240905 | 213324 |
| rejected events | 34016  | 59294  | 34207  | 55378  | 40296  | 35083  |
| rejected %      | 16%    | 18%    | 15%    | 16%    | 16%    | 16%    |

|                | ccd 4 | ccd 5  | ccd 6  | ccd 7  | ccd 8  | ccd 9 |
|----------------|-------|--------|--------|--------|--------|-------|
| grade 0 events | 96842 | 30584  | 103068 | 49405  | 109785 | 98031 |
|                | 48%   | 9%     | 46%    | 14%    | 45%    | 45%   |
| grade 1 events | 658   | 136    | 495    | 135    | 526    | 526   |
|                | 0%    | 0%     | 0%     | 0%     | 0%     | 0%    |
| grade 2 events | 26426 | 122022 | 32614  | 87036  | 34961  | 30555 |
|                | 13%   | 38%    | 14%    | 25%    | 14%    | 14%   |
| grade 3 events | 10785 | 8374   | 11798  | 20463  | 12883  | 11505 |
|                | 5%    | 2%     | 5%     | 6%     | 5%     | 5%    |
| grade 4 events | 10781 | 8155   | 11643  | 20259  | 13001  | 11368 |
|                | 5%    | 2%     | 5%     | 5%     | 5%     | 5%    |
| grade 5 events | 2185  | 6310   | 2505   | 6859   | 2978   | 2501  |
|                | 1%    | 1%     | 1%     | 2%     | 1%     | 1%    |
| grade 6 events | 21251 | 87743  | 30218  | 107618 | 29979  | 26782 |
|                | 10%   | 27%    | 13%    | 31%    | 12%    | 12%   |
| grade 7 events | 31173 | 52848  | 31207  | 48384  | 36792  | 32056 |
|                | 15%   | 16%    | 13%    | 14%    | 15%    | 15%   |

## 2.2 Compared Parameters

| Parameter                         | Planned             | Actual               | Parameter                       | Planned   | Actual  |
|-----------------------------------|---------------------|----------------------|---------------------------------|-----------|---------|
| Instrument                        | ACIS                | ACIS                 | Obspar format version number    | 6         | 6       |
| Detector                          | ACIS-456789         | ACIS-456789          | Obspar file type                | PREDICTED | ACTUAL  |
| Grating                           | NONE                | NONE                 | Obspar update status            | NONE      | UPDATED |
| Data mode                         | FAINT               | FAINT                | On-chip summing requested       | N         | N       |
| Observation mode                  | SECONDARY           | SECONDARY            | Subarray requested              | NONE      | NONE    |
| Pointing RA                       | 0                   | 224.4919914296365    | Alternating exposures requested | N         | N       |
| Pointing Dec                      | 0                   | -5.972541864154436   | Primary exposure time           | 0.000000  | 3.2     |
| Pointing Roll                     | 0.0                 | 73.26030999362268    |                                 |           |         |
| SIM focus pos (mm)                | -0.684267           | -0.6828225247311905  |                                 |           |         |
| SIM defocus (mm)                  | 0                   | 0.8505141146731063   |                                 |           |         |
| SIM translation stage pos (mm)    | -190.132523         | 250.466033080201     |                                 |           |         |
| SIM translation stage offset (mm) | 0                   | -0.01005468664627074 |                                 |           |         |
| Observation start time            | 192164561.109946    | 192164560.08524      |                                 |           |         |
| Observation start date            | 2004-02-03T03:02:41 | 2004-02-03T03:02:40  |                                 |           |         |
| Observation end time              | 192187326.360941    | 192187325.33624      |                                 |           |         |
| Observation end date              | 2004-02-03T09:22:06 | 2004-02-03T09:22:05  |                                 |           |         |
| Read mode                         | TIMED               | TIMED                |                                 |           |         |

## 2.3 Aspect



## **2.4 Star Slots**

## **2.5 FID Slots**



## A Summary

### A.1 Status

|                            |            |
|----------------------------|------------|
| V&V Scientist              | Jen Lauer  |
| V&V Date (YYYY-MM-DD)      | 2006.06.05 |
| V&V Edition                | 1          |
| V&V Disposition and Status | OK         |
| V&V Charge Time            | 8.46399996 |

### A.2 Comments