

V&V Reference Report

L2 ASCDS Version : 7.6.7.2

Observation 60385 - L2 Version 001
Chandra X-Ray Center

L2 Processing Date : Jun 4 2006

Contents

1	Front	2
2	OBI	3
2.1	OBI	3
2.1.1	Images	3
2.1.2	Bias	3
2.1.3	Parameters	4
2.1.4	Events	4
2.2	Compared Parameters	5
2.3	Aspect	6
2.4	Star Slots	8
2.5	FID Slots	8
A	Summary	9
A.1	Status	9
A.2	Comments	9

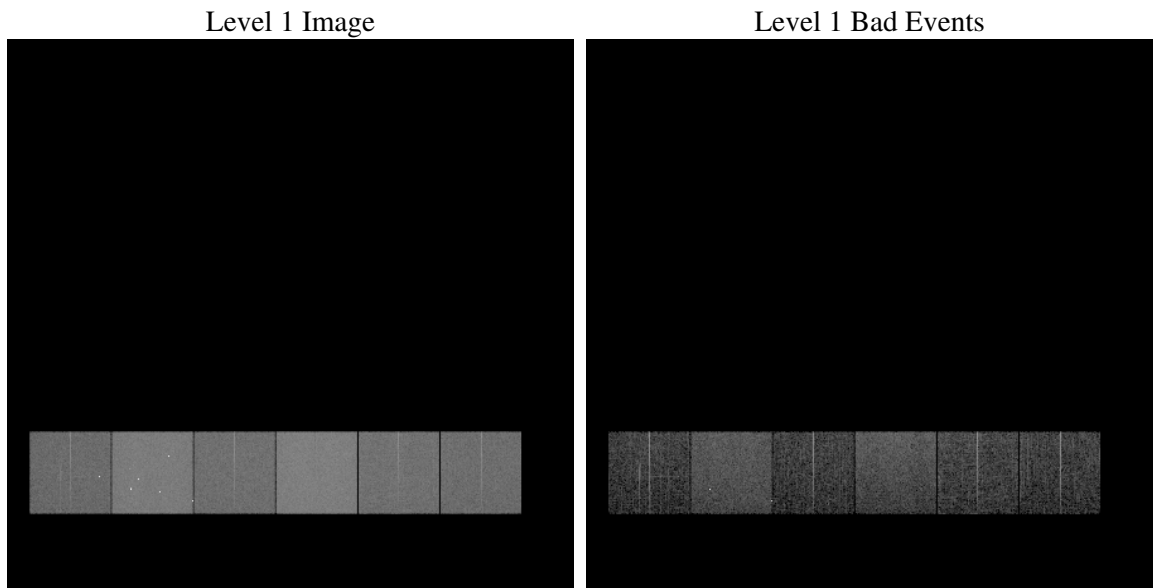
1 Front

seq_num	
obs_id	60385
title	ACIS-456789 diagnostics
observer	CHANDRA engineering request/realtime commanding
object	
dtcycle	0
cycle	P
ra_targ	0.0
dec_targ	0.0
ra_nom	168.97710078607
dec_nom	26.019870299404
roll_nom	103.03012131638
revision	2
ontime	7801.5999709368
livetime	7702.8114145452
ontime4	4727.2130894959
ontime5	7801.5999709368
ontime6	5142.0178486407
ontime7	7801.5999709368
ontime8	5190.7154789567
ontime9	4976.604955256
l2events	1108844

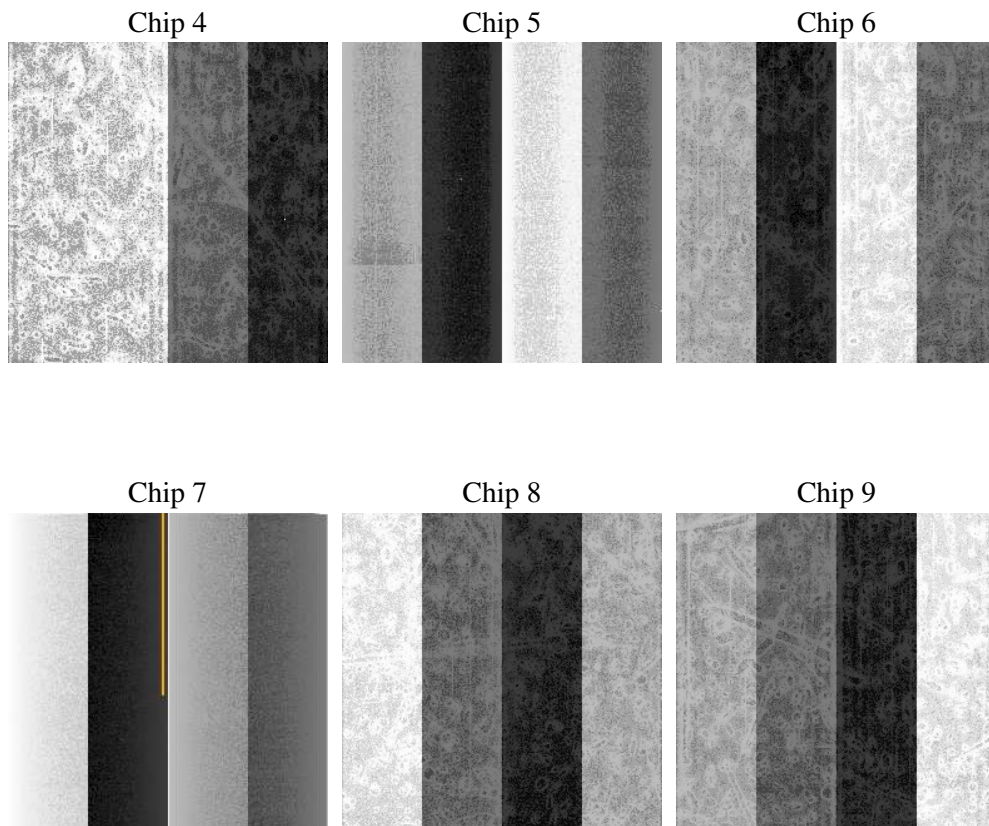
2 OBI

2.1 OBI

2.1.1 Images



2.1.2 Bias



2.1.3 Parameters

obi_num	0
ascdsver	7.6.7.2
caldbver	3.2.2
date	2006-06-05T00:41:28
revision	2

sched_exp_time	0.0
ontime	7804.3388209939
ontime4	4728.6520338356
ontime5	7804.3388209939
ontime6	5143.4978329837
ontime7	7804.3388209939
ontime8	5192.113383323
ontime9	4978.2080596089
l1events	1416600

2.1.4 Events

	ccd 4	ccd 5	ccd 6	ccd 7	ccd 8	ccd 9
level 1 events	183090	298291	207629	314377	217133	196080
rejected events	31595	57579	31270	50700	36301	31773
rejected %	17%	19%	15%	16%	16%	16%

	ccd 4	ccd 5	ccd 6	ccd 7	ccd 8	ccd 9
grade 0 events	88833	30135	96399	46150	99490	90952
	48%	10%	46%	14%	45%	46%
grade 1 events	561	270	453	108	481	458
	0%	0%	0%	0%	0%	0%
grade 2 events	23912	113093	30524	80383	31512	27964
	13%	37%	14%	25%	14%	14%
grade 3 events	10047	7362	10914	19308	11570	10539
	5%	2%	5%	6%	5%	5%
grade 4 events	9805	7040	10855	18916	11592	10497
	5%	2%	5%	6%	5%	5%
grade 5 events	2072	6509	2265	6252	2650	2280
	1%	2%	1%	1%	1%	1%
grade 6 events	18898	83082	27667	98920	26668	24355
	10%	27%	13%	31%	12%	12%
grade 7 events	28962	50800	28552	44340	33170	29035
	15%	17%	13%	14%	15%	14%

2.2 Compared Parameters

Parameter	Planned	Actual	Parameter	Planned	Actual
Instrument	ACIS	ACIS	Obspar format version number	6	6
Detector	ACIS-456789	ACIS-456789	Obspar file type	PREDICTED	ACTUAL
Grating	NONE	NONE	Obspar update status	NONE	UPDATED
Data mode	FAINT	FAINT	On-chip summing requested	N	N
Observation mode	SECONDARY	SECONDARY	Subarray requested	NONE	NONE
Pointing RA	0	168.9771007860711	Alternating exposures requested	N	N
Pointing Dec	0	26.01987029940405	Primary exposure time	0.000000	3.2
Pointing Roll	0.0	103.0301213163846			
SIM focus pos (mm)	-0.684267	-0.6828225247311905			
SIM defocus (mm)	0	0.8505141146731063			
SIM translation stage pos (mm)	-190.132523	250.466033080201			
SIM translation stage offset (mm)	0	-0.01005468664627074			
Observation start time	192357002.818379	192357001.79365			
Observation start date	2004-02-05T08:30:03	2004-02-05T08:30:01			
Observation end time	192374198.219131	192374197.1944			
Observation end date	2004-02-05T13:16:38	2004-02-05T13:16:37			
Read mode	TIMED	TIMED			

2.3 Aspect

2.4 Star Slots

2.5 FID Slots

A Summary

A.1 Status

V&V Scientist	Jen Lauer
V&V Date (YYYY-MM-DD)	2006.06.05
V&V Edition	1
V&V Disposition and Status	OK
V&V Charge Time	7.80159997

A.2 Comments