

V&V Reference Report

L2 ASCDS Version : 8.4.5

Observation 60376 - L2 Version 3
Chandra X-Ray Center

L2 Processing Date : Nov 11 2012

Contents

| | | |
|----------|-------------------------------|----------|
| 1 | Front | 2 |
| 2 | OBI | 3 |
| 2.1 | OBI | 3 |
| 2.1.1 | Images | 3 |
| 2.1.2 | Bias | 3 |
| 2.1.3 | Parameters | 4 |
| 2.1.4 | Events | 4 |
| 2.2 | Compared Parameters | 5 |
| 2.3 | Star Slots | 6 |
| 2.4 | FID Slots | 6 |
| A | Summary | 7 |
| A.1 | Status | 7 |
| A.2 | Comments | 7 |

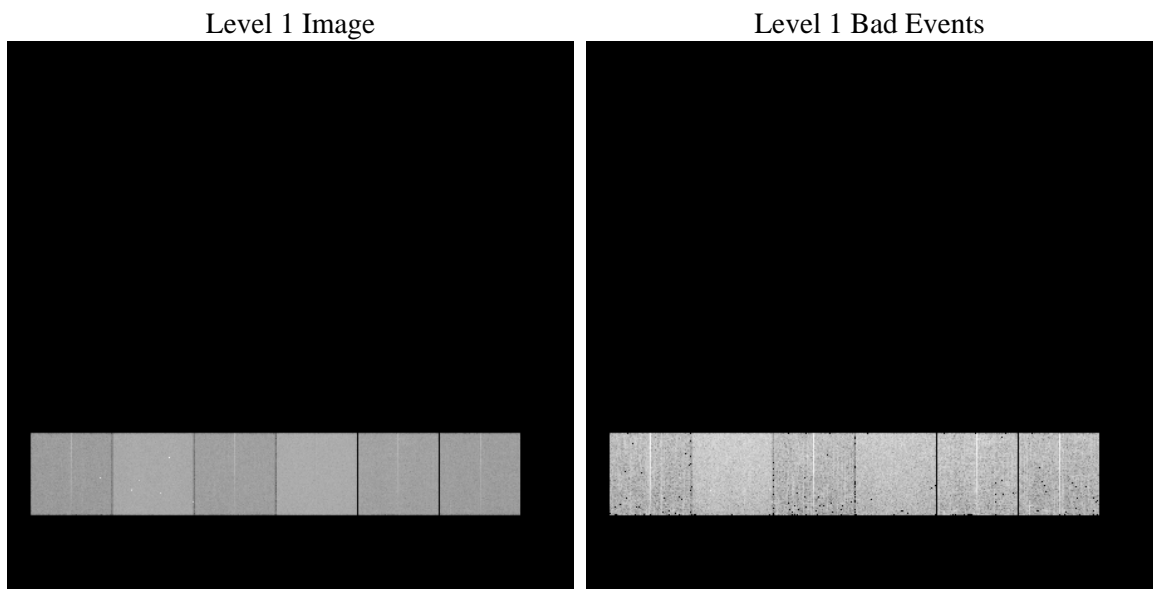
1 Front

| | | |
|----------|---|---|
| seq_num | | Sequence number |
| obs_id | 60376 | Observation id |
| title | ACIS-456789 diagnostics | Proposal title |
| observer | CHANDRA engineering request/realtime commanding | Principal investig |
| object | | Source name |
| dtcycle | 0 | |
| cycle | P | events from which exps? Prim/Second/Both |
| ra_targ | 0.0 | Observer's specified target RA [deg] |
| dec_targ | 0.0 | Observer's specified target Dec [deg] |
| ra_nom | 146.96280006812 | Nominal RA [deg] |
| dec_nom | 46.986785077073 | Nominal Dec [deg] |
| roll_nom | 174.69108449385 | Nominal Roll [deg] |
| revision | 3 | Processing version of data |
| ontime | 8436.8905790448 | Sum of GTIs [s] |
| livetime | 8330.0575904473 | Livetime [s] |
| ontime4 | 5053.1833675802 | Sum of GTIs [s] |
| ontime5 | 8436.8495390415 | Sum of GTIs [s] |
| ontime6 | 5493.5317568481 | Sum of GTIs [s] |
| ontime7 | 8436.8905790448 | Sum of GTIs [s] |
| ontime8 | 5685.1351103187 | Sum of GTIs [s] |
| ontime9 | 5270.4943094552 | Sum of GTIs [s] |
| l2events | 1215350 | Number of level 2 events |

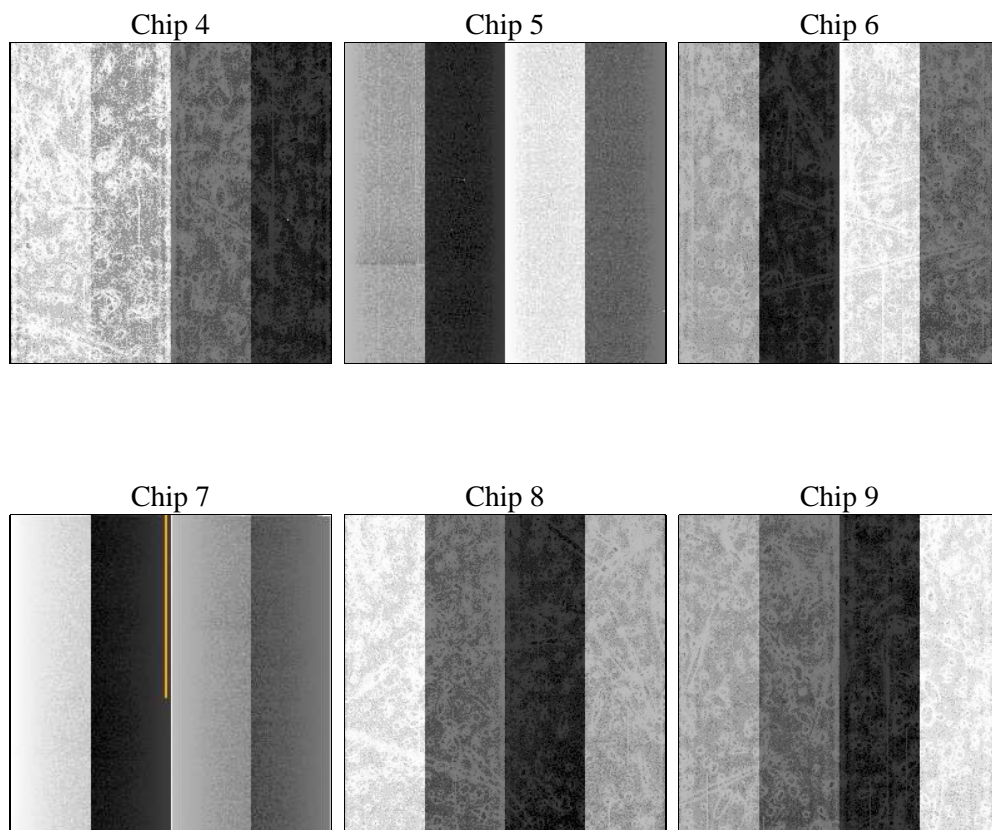
2 OBI

2.1 OBI

2.1.1 Images



2.1.2 Bias



2.1.3 Parameters

| | | | | | |
|----------|---------------------|--------------------------------|----------------|-----------------|---|
| obi_num | 0 | Obi number | sched_exp_time | 0.0 | [s] Scheduled observation exposure time |
| ascdsver | 8.4.5 | Processing system revision | ontime | 8436.8905790448 | Sum of GTIs [s] |
| caldsver | 4.5.2 | | ontime4 | 5053.1833675802 | Sum of GTIs [s] |
| date | 2012-11-11T14:42:38 | Date and time of file creation | ontime5 | 8436.8495390415 | Sum of GTIs [s] |
| revision | 3 | Processing version of data | ontime6 | 5493.5317568481 | Sum of GTIs [s] |
| | | | ontime7 | 8436.8905790448 | Sum of GTIs [s] |
| | | | ontime8 | 5685.1351103187 | Sum of GTIs [s] |
| | | | ontime9 | 5270.4943094552 | Sum of GTIs [s] |
| | | | l1events | 1534124 | Number of level 1 events |

2.1.4 Events

| | ccd 4 | ccd 5 | ccd 6 | ccd 7 | ccd 8 | ccd 9 | | ccd 4 | ccd 5 | ccd 6 | ccd 7 | ccd 8 | ccd 9 |
|-----------------|--------|--------|--------|--------|--------|--------|----------------|-------|-------|--------|-------|--------|-------|
| level 1 events | 197089 | 319616 | 224101 | 343033 | 240660 | 209625 | grade 0 events | 94153 | 62741 | 103284 | 74049 | 108516 | 96400 |
| rejected events | 36119 | 54399 | 35628 | 45761 | 43164 | 35418 | | 47% | 19% | 46% | 21% | 45% | 45% |
| rejected % | 18% | 17% | 15% | 13% | 17% | 16% | grade 1 events | 636 | 252 | 513 | 236 | 541 | 512 |
| | | | | | | | | 0% | 0% | 0% | 0% | 0% | 0% |
| | | | | | | | grade 2 events | 25622 | 93876 | 32651 | 65889 | 34563 | 30013 |
| | | | | | | | | 13% | 29% | 14% | 19% | 14% | 14% |
| | | | | | | | grade 3 events | 10675 | 16836 | 11684 | 30056 | 12669 | 11066 |
| | | | | | | | | 5% | 5% | 5% | 8% | 5% | 5% |
| | | | | | | | grade 4 events | 10720 | 16260 | 11639 | 29874 | 12849 | 11327 |
| | | | | | | | | 5% | 5% | 5% | 8% | 5% | 5% |
| | | | | | | | grade 5 events | 2254 | 8974 | 2565 | 8282 | 3108 | 2558 |
| | | | | | | | | 1% | 2% | 1% | 2% | 1% | 1% |
| | | | | | | | grade 6 events | 20433 | 76444 | 29677 | 98382 | 29656 | 26055 |
| | | | | | | | | 10% | 23% | 13% | 28% | 12% | 12% |
| | | | | | | | grade 7 events | 32596 | 44233 | 32088 | 36265 | 38758 | 31694 |
| | | | | | | | | 16% | 13% | 14% | 10% | 16% | 15% |

2.2 Compared Parameters

| Parameter | Planned | Actual | Parameter | Planned | Actual |
|-----------------------------------|---------------------|----------------------|---------------------------------|-----------|---------|
| Instrument | ACIS | ACIS | Obspar format version number | 7 | 7 |
| Detector | ACIS-456789 | ACIS-456789 | Obspar file type | PREDICTED | ACTUAL |
| Grating | NONE | NONE | Obspar update status | NONE | UPDATED |
| Data mode | FAINT | FAINT | On-chip summing requested | N | N |
| Observation mode | SECONDARY | SECONDARY | Subarray requested | NONE | NONE |
| [deg] Pointing RA | 0 | 146.9628000681229 | Alternating exposures requested | N | N |
| [deg] Pointing Dec | 0 | 46.98678507707349 | [s] Primary exposure time | 0.000000 | 3.2 |
| [deg] Pointing Roll | 0.0 | 174.691084493849 | | | |
| [mm] SIM focus pos | -0.684267 | -0.6828225247311905 | | | |
| [mm] SIM defocus | 0 | 0.8505141146731063 | | | |
| [mm] SIM translation stage pos | -190.132523 | 250.466033080201 | | | |
| [mm] SIM translation stage offset | 0 | -0.01005468664627074 | | | |
| [s] Observation start time (MET) | 192850472.689941 | 192850471.66523 | | | |
| Observation start date | 2004-02-11T01:34:33 | 2004-02-11T01:34:31 | | | |
| [s] Observation end time (MET) | 192872610.640909 | 192872609.6162 | | | |
| Observation end date | 2004-02-11T07:43:31 | 2004-02-11T07:43:29 | | | |
| Read mode | TIMED | TIMED | | | |

2.3 Star Slots

2.4 FID Slots

A Summary

A.1 Status

| | |
|----------------------------|-----------------|
| V&V Scientist | Beth Sundheim |
| V&V Date (YYYY-MM-DD) | 2012.12.06 |
| V&V Edition | 1 |
| V&V Disposition and Status | OK |
| V&V Charge Time | 8.4368905790448 |

A.2 Comments