

V&V Reference Report

L2 ASCDS Version : 7.6.7.2

Observation 60376 - L2 Version 001
Chandra X-Ray Center

L2 Processing Date : Jun 3 2006

Contents

1	Front	2
2	OBI	3
2.1	OBI	3
2.1.1	Images	3
2.1.2	Bias	3
2.1.3	Parameters	4
2.1.4	Events	4
2.2	Compared Parameters	5
2.3	Aspect	6
2.4	Star Slots	8
2.5	FID Slots	8
A	Summary	9
A.1	Status	9
A.2	Comments	9

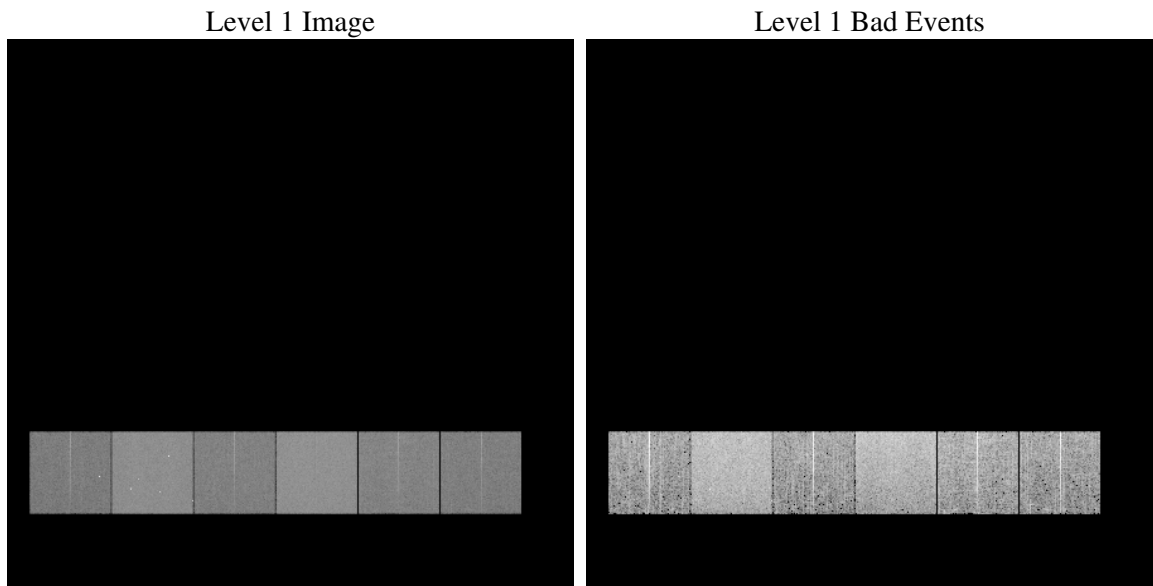
1 Front

seq_num	
obs_id	60376
title	ACIS-456789 diagnostics
observer	CHANDRA engineering request/realtime commanding
object	
dtcycle	0
cycle	P
ra_targ	0.0
dec_targ	0.0
ra_nom	146.9628406089
dec_nom	46.986782474411
roll_nom	174.69105484304
revision	2
ontime	8438.3999685645
livetime	8331.5478671681
ontime4	5054.7833675742
ontime5	8438.3999685645
ontime6	5493.5232263803
ontime7	8438.3999685645
ontime8	5686.7351103127
ontime9	5271.9626589715
l2events	1198174

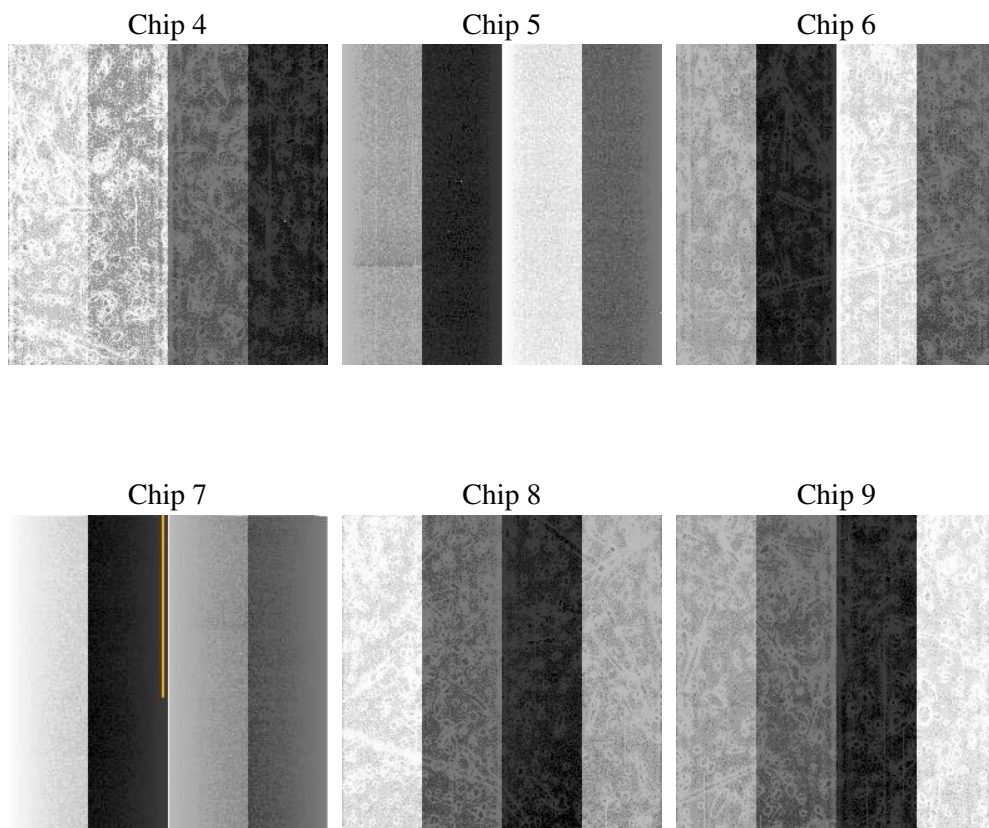
2 OBI

2.1 OBI

2.1.1 Images



2.1.2 Bias



2.1.3 Parameters

obi_num	0
ascdsver	7.6.7.2
caldbver	3.2.2
date	2006-06-03T23:52:51
revision	2

sched_exp_time	0.0
ontime	8465.5102699995
ontime4	5072.203217864
ontime5	8465.5102699995
ontime6	5506.4958769977
ontime7	8465.5102699995
ontime8	5707.4370205998
ontime9	5289.3499997258
l1events	1534124

2.1.4 Events

	ccd 4	ccd 5	ccd 6	ccd 7	ccd 8	ccd 9
level 1 events	197089	319616	224101	343033	240660	209625
rejected events	35997	61822	35628	56249	43039	35301
rejected %	18%	19%	15%	16%	17%	16%

	ccd 4	ccd 5	ccd 6	ccd 7	ccd 8	ccd 9
grade 0 events	94153	32877	103282	51657	108515	96400
	47%	10%	46%	15%	45%	45%
grade 1 events	636	145	513	139	541	512
	0%	0%	0%	0%	0%	0%
grade 2 events	25622	120320	32653	86639	34564	30013
	13%	37%	14%	25%	14%	14%
grade 3 events	10675	8859	11683	21264	12669	11066
	5%	2%	5%	6%	5%	5%
grade 4 events	10720	8392	11639	20862	12847	11328
	5%	2%	5%	6%	5%	5%
grade 5 events	2254	6484	2565	6897	3107	2558
	1%	2%	1%	2%	1%	1%
grade 6 events	20433	88157	29678	107198	29658	26054
	10%	27%	13%	31%	12%	12%
grade 7 events	32596	54382	32088	48377	38759	31694
	16%	17%	14%	14%	16%	15%

2.2 Compared Parameters

Parameter	Planned	Actual	Parameter	Planned	Actual
Instrument	ACIS	ACIS	Obspar format version number	6	6
Detector	ACIS-456789	ACIS-456789	Obspar file type	PREDICTED	ACTUAL
Grating	NONE	NONE	Obspar update status	NONE	UPDATED
Data mode	FAINT	FAINT	On-chip summing requested	N	N
Observation mode	SECONDARY	SECONDARY	Subarray requested	NONE	NONE
Pointing RA	0	146.9628406088969	Alternating exposures requested	N	N
Pointing Dec	0	46.9867824744112	Primary exposure time	0.000000	3.2
Pointing Roll	0.0	174.6910548430429			
SIM focus pos (mm)	-0.684267	-0.6828225247311905			
SIM defocus (mm)	0	0.8505141146731063			
SIM translation stage pos (mm)	-190.132523	250.466033080201			
SIM translation stage offset (mm)	0	-0.01005468664627074			
Observation start time	192850472.689941	192850471.66523			
Observation start date	2004-02-11T01:34:33	2004-02-11T01:34:31			
Observation end time	192872610.640909	192872609.6162			
Observation end date	2004-02-11T07:43:31	2004-02-11T07:43:29			
Read mode	TIMED	TIMED			

2.3 Aspect

2.4 Star Slots

2.5 FID Slots

A Summary

A.1 Status

V&V Scientist	Jen Lauer
V&V Date (YYYY-MM-DD)	2006.06.04
V&V Edition	1
V&V Disposition and Status	OK
V&V Charge Time	8.43839996

A.2 Comments