

# V&V Reference Report

## L2 ASCDS Version : 7.6.7.2

Observation 60367 - L2 Version 001  
Chandra X-Ray Center

L2 Processing Date : Jun 2 2006

## Contents

<b>1</b>	<b>Front</b>	<b>2</b>
<b>2</b>	<b>OBI</b>	<b>3</b>
2.1	OBI . . . . .	3
2.1.1	Images . . . . .	3
2.1.2	Bias . . . . .	3
2.1.3	Parameters . . . . .	4
2.1.4	Events . . . . .	4
2.2	Compared Parameters . . . . .	5
2.3	Aspect . . . . .	6
2.4	Star Slots . . . . .	8
2.5	FID Slots . . . . .	8
<b>A</b>	<b>Summary</b>	<b>9</b>
A.1	Status . . . . .	9
A.2	Comments . . . . .	9

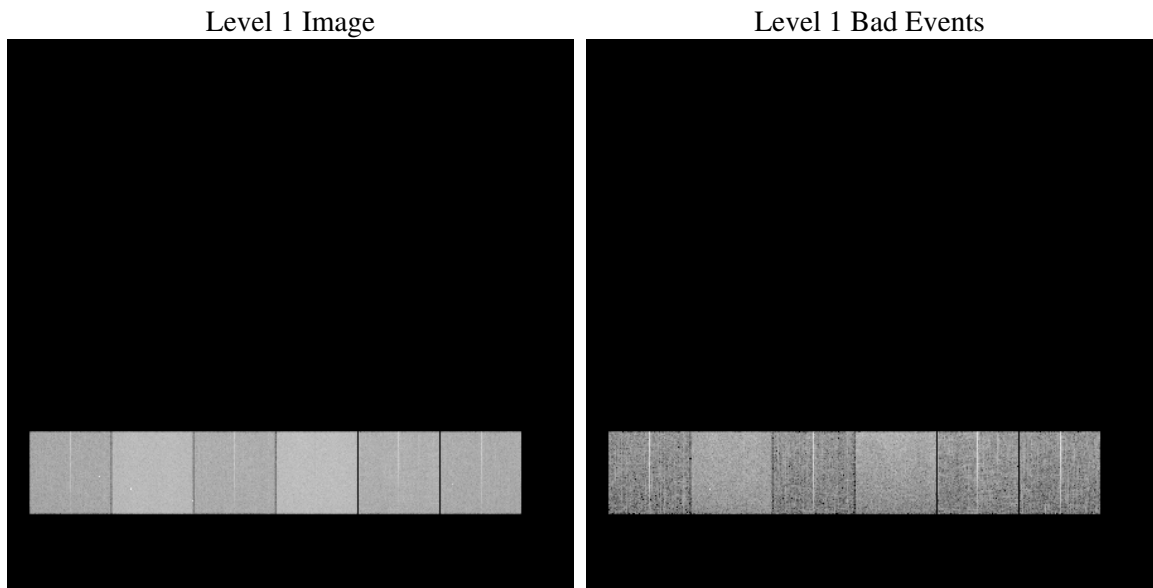
# 1 Front

seq_num	&#160
obs_id	60367
title	ACIS-456789 diagnostics
observer	CHANDRA engineering request/realtime commanding
object	&#160
dtcycle	0
cycle	P
ra_targ	0.0
dec_targ	0.0
ra_nom	122.21206048485
dec_nom	18.473790669917
roll_nom	260.67190356822
revision	2
ontime	8393.5999687314
livetime	8287.3151519082
ontime4	5038.5990698636
ontime5	8393.5999687314
ontime6	5420.9944265783
ontime7	8393.5999687314
ontime8	5612.8406060338
ontime9	5297.7141864896
l2events	1181223

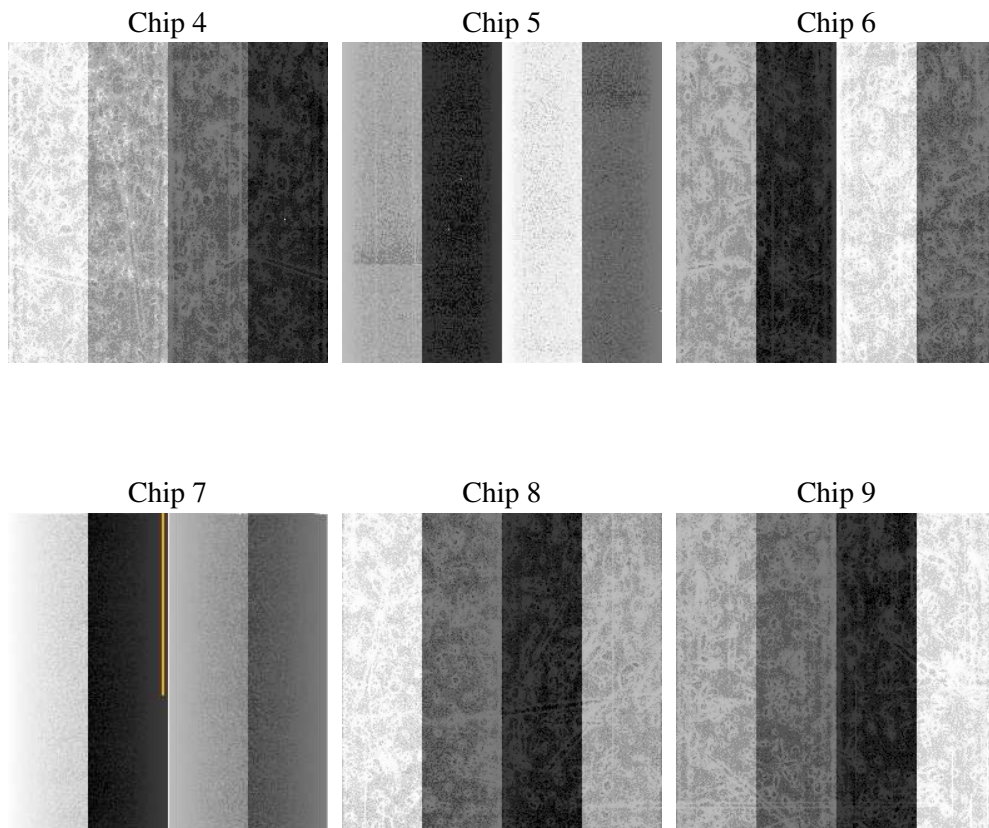
## 2 OBI

### 2.1 OBI

#### 2.1.1 Images



#### 2.1.2 Bias



### 2.1.3 Parameters

obi_num	1
ascdsver	7.6.7.2
caldsver	3.2.2
date	2006-06-02T22:14:26
revision	2

sched_exp_time	0.0
ontime	8462.268790096
ontime4	5075.4441076517
ontime5	8462.268790096
ontime6	5467.6035148501
ontime7	8462.268790096
ontime8	5665.304535985
ontime9	5344.4464147091
l1events	1533628

### 2.1.4 Events

	ccd 4	ccd 5	ccd 6	ccd 7	ccd 8	ccd 9
level 1 events	197387	316339	224309	342830	239443	213320
rejected events	38829	64355	39554	60268	45367	40466
rejected %	19%	20%	17%	17%	18%	18%

	ccd 4	ccd 5	ccd 6	ccd 7	ccd 8	ccd 9
grade 0 events	93190	28485	101438	49990	107272	96227
	47%	9%	45%	14%	44%	45%
grade 1 events	669	94	509	134	554	533
	0%	0%	0%	0%	0%	0%
grade 2 events	25136	120309	32121	86277	34353	29902
	12%	38%	14%	25%	14%	14%
grade 3 events	10664	8261	11402	20566	12577	11209
	5%	2%	5%	5%	5%	5%
grade 4 events	10574	8217	11507	20436	12684	11043
	5%	2%	5%	5%	5%	5%
grade 5 events	2183	6479	2620	7113	3117	2666
	1%	2%	1%	2%	1%	1%
grade 6 events	20113	88690	29876	107475	28985	25979
	10%	28%	13%	31%	12%	12%
grade 7 events	34858	55804	34836	50839	39901	35761
	17%	17%	15%	14%	16%	16%

## 2.2 Compared Parameters

Parameter	Planned	Actual	Parameter	Planned	Actual
Instrument	ACIS	ACIS	Obspar format version number	6	6
Detector	ACIS-456789	ACIS-456789	Obspar file type	PREDICTED	ACTUAL
Grating	NONE	NONE	Obspar update status	NONE	UPDATED
Data mode	FAINT	FAINT	On-chip summing requested	N	N
Observation mode	SECONDARY	SECONDARY	Subarray requested	NONE	NONE
Pointing RA	0	122.2120604848531	Alternating exposures requested	N	N
Pointing Dec	0	18.47379066991672	Primary exposure time	0.000000	3.2
Pointing Roll	0.0	260.671903568217			
SIM focus pos (mm)	-0.684267	-0.7809083437167272			
SIM defocus (mm)	0	0.7524282956875696			
SIM translation stage pos (mm)	-190.132523	250.4635187648994			
SIM translation stage offset (mm)	0	-0.007540371344731511			
Observation start time	193535431.019917	193535429.99519			
Observation start date	2004-02-18T23:50:31	2004-02-18T23:50:29			
Observation end time	193558149.120911	193558148.09619			
Observation end date	2004-02-19T06:09:09	2004-02-19T06:09:08			
Read mode	TIMED	TIMED			

## 2.3 Aspect



## **2.4 Star Slots**

## **2.5 FID Slots**



## A Summary

### A.1 Status

V&V Scientist	Jen Lauer
V&V Date (YYYY-MM-DD)	2006.06.04
V&V Edition	1
V&V Disposition and Status	OK
V&V Charge Time	8.39359996

### A.2 Comments