

V&V Reference Report

L2 ASCDS Version : 8.4.5

Observation 60348 - L2 Version 3
Chandra X-Ray Center

L2 Processing Date : Nov 12 2012

Contents

1	Front	2
2	OBI	3
2.1	OBI	3
2.1.1	Images	3
2.1.2	Bias	3
2.1.3	Parameters	4
2.1.4	Events	4
2.2	Compared Parameters	5
2.3	Star Slots	6
2.4	FID Slots	6
A	Summary	7
A.1	Status	7
A.2	Comments	7

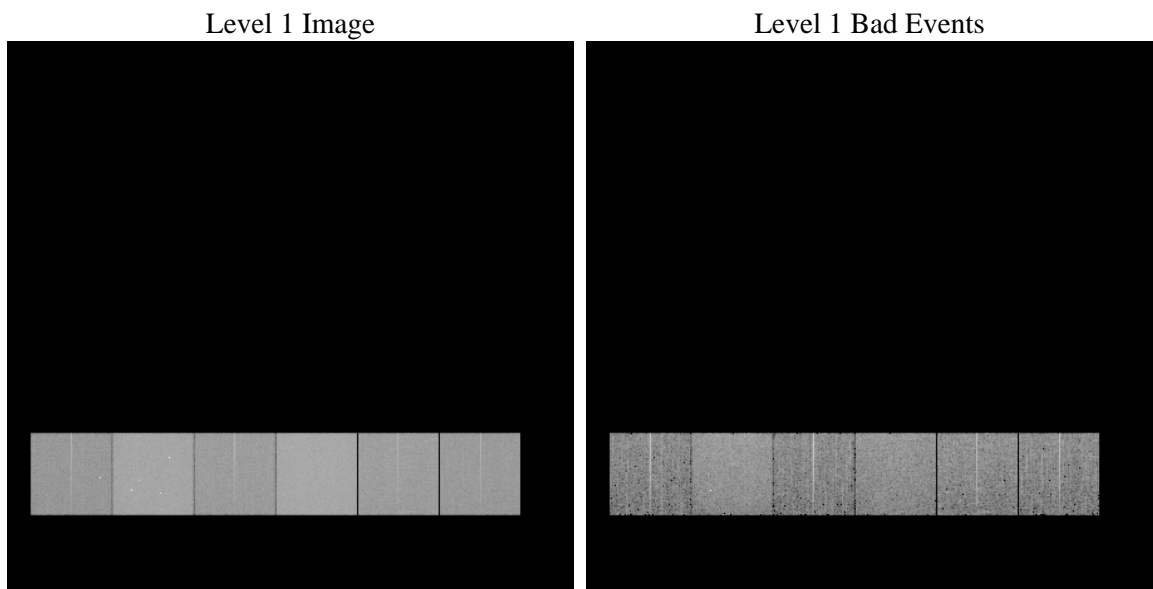
1 Front

seq_num	 	Sequence number
obs_id	60348	Observation id
title	ACIS-456789 diagnostics	Proposal title
observer	CHANDRA engineering request/realtime commanding	Principal investig
object	 	Source name
dtcycle	0	
cycle	P	events from which exps? Prim/Second/Both
ra_targ	0.0	Observer's specified target RA [deg]
dec_targ	0.0	Observer's specified target Dec [deg]
ra_nom	164.93451532938	Nominal RA [deg]
dec_nom	68.983653030374	Nominal Dec [deg]
roll_nom	182.04838737321	Nominal Roll [deg]
revision	3	Processing version of data
ontime	8438.3999685645	Sum of GTIs [s]
livetime	8331.5478671681	Livetime [s]
ontime4	5051.5812643766	Sum of GTIs [s]
ontime5	8438.3999685645	Sum of GTIs [s]
ontime6	5573.3797698617	Sum of GTIs [s]
ontime7	8438.3999685645	Sum of GTIs [s]
ontime8	5719.2237811387	Sum of GTIs [s]
ontime9	5294.6544737816	Sum of GTIs [s]
l2events	1199128	Number of level 2 events

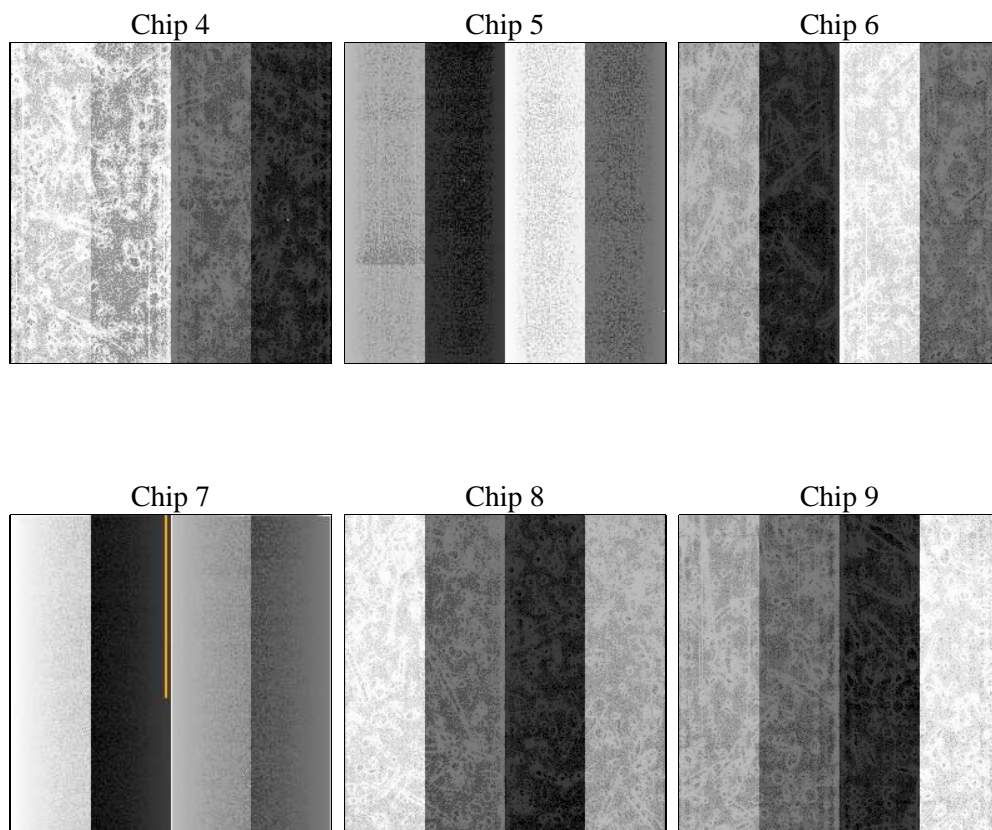
2 OBI

2.1 OBI

2.1.1 Images



2.1.2 Bias



2.1.3 Parameters

obi_num	0	Obi number	sched_exp_time	0.0	[s] Scheduled observation exposure time
ascdsver	8.4.5	Processing system revision	ontime	8438.3999685645	Sum of GTIs [s]
caldsver	4.5.2	 	ontime4	5051.5812643766	Sum of GTIs [s]
date	2012-11-12T20:45:08	Date and time of file creation	ontime5	8438.3999685645	Sum of GTIs [s]
revision	3	Processing version of data	ontime6	5573.3797698617	Sum of GTIs [s]
			ontime7	8438.3999685645	Sum of GTIs [s]
			ontime8	5719.2237811387	Sum of GTIs [s]
			ontime9	5294.6544737816	Sum of GTIs [s]
			l1events	1532883	Number of level 1 events

2.1.4 Events

	ccd 4	ccd 5	ccd 6	ccd 7	ccd 8	ccd 9		ccd 4	ccd 5	ccd 6	ccd 7	ccd 8	ccd 9
level 1 events	195686	319489	227455	339896	239698	210659	grade 0 events	92433	60206	102757	71354	107092	95082
rejected events	37269	56961	39509	48022	43943	38988		47%	18%	45%	20%	44%	45%
rejected %	19%	17%	17%	14%	18%	18%	grade 1 events	657	222	485	190	586	543
								0%	0%	0%	0%	0%	0%
							grade 2 events	25241	94534	32727	64436	34359	29683
								12%	29%	14%	18%	14%	14%
							grade 3 events	10479	15838	11609	29517	12659	10845
								5%	4%	5%	8%	5%	5%
							grade 4 events	10531	15672	11555	29364	12906	10858
								5%	4%	5%	8%	5%	5%
							grade 5 events	2286	9660	2645	8753	3212	2694
								1%	3%	1%	2%	1%	1%
							grade 6 events	20256	76978	29748	97978	29327	25877
								10%	24%	13%	28%	12%	12%
							grade 7 events	33803	46379	35929	38304	39557	35077
								17%	14%	15%	11%	16%	16%

2.2 Compared Parameters

Parameter	Planned	Actual	Parameter	Planned	Actual
Instrument	ACIS	ACIS	Obspar format version number	7	7
Detector	ACIS-456789	ACIS-456789	Obspar file type	PREDICTED	ACTUAL
Grating	NONE	NONE	Obspar update status	NONE	UPDATED
Data mode	FAINT	FAINT	On-chip summing requested	N	N
Observation mode	SECONDARY	SECONDARY	Subarray requested	NONE	NONE
[deg] Pointing RA	0	164.9345153293791	Alternating exposures requested	N	N
[deg] Pointing Dec	0	68.98365303037436	[s] Primary exposure time	0.000000	3.2
[deg] Pointing Roll	0.0	182.0483873732111			
[mm] SIM focus pos	-0.684267	-0.6828225247311905			
[mm] SIM defocus	0	0.8505141146731063			
[mm] SIM translation stage pos	-190.132523	250.466033080201			
[mm] SIM translation stage offset	0	-0.01005468664627074			
[s] Observation start time (MET)	194908396.030031	194908395.00532			
Observation start date	2004-03-05T21:13:16	2004-03-05T21:13:15			
[s] Observation end time (MET)	194929705.780965	194929704.75626			
Observation end date	2004-03-06T03:08:26	2004-03-06T03:08:24			
Read mode	TIMED	TIMED			

2.3 Star Slots

2.4 FID Slots

A Summary

A.1 Status

V&V Scientist	Beth Sundheim
V&V Date (YYYY-MM-DD)	2012.12.20
V&V Edition	1
V&V Disposition and Status	OK
V&V Charge Time	8.4383999685645

A.2 Comments