

V&V Reference Report

L2 ASCDS Version : 7.6.7.2

Observation 60340 - L2 Version 001
Chandra X-Ray Center

L2 Processing Date : May 29 2006

Contents

1	Front	2
2	OBI	3
2.1	OBI	3
2.1.1	Images	3
2.1.2	Bias	3
2.1.3	Parameters	4
2.1.4	Events	4
2.2	Compared Parameters	5
2.3	Aspect	6
2.4	Star Slots	8
2.5	FID Slots	8
A	Summary	9
A.1	Status	9
A.2	Comments	9

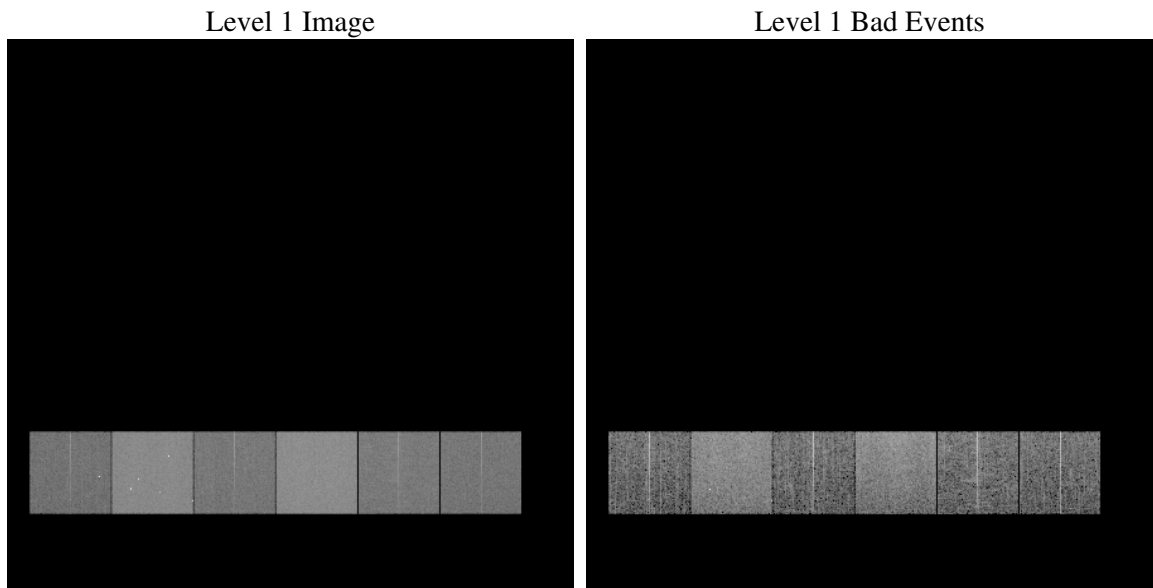
1 Front

seq_num	
obs_id	60340
title	ACIS-456789 diagnostics
observer	CHANDRA engineering request/realtime commanding
object	
dtcycle	0
cycle	P
ra_targ	0.0
dec_targ	0.0
ra_nom	176.47144541777
dec_nom	25.387649547273
roll_nom	172.69066996336
revision	2
ontime	7398.3999724388
livetime	7304.7169772062
ontime4	3659.6534193754
ontime5	7398.3999724388
ontime6	4076.3947071135
ontime7	7398.3999724388
ontime8	4220.3880761266
ontime9	3947.9404246807
l2events	1045035

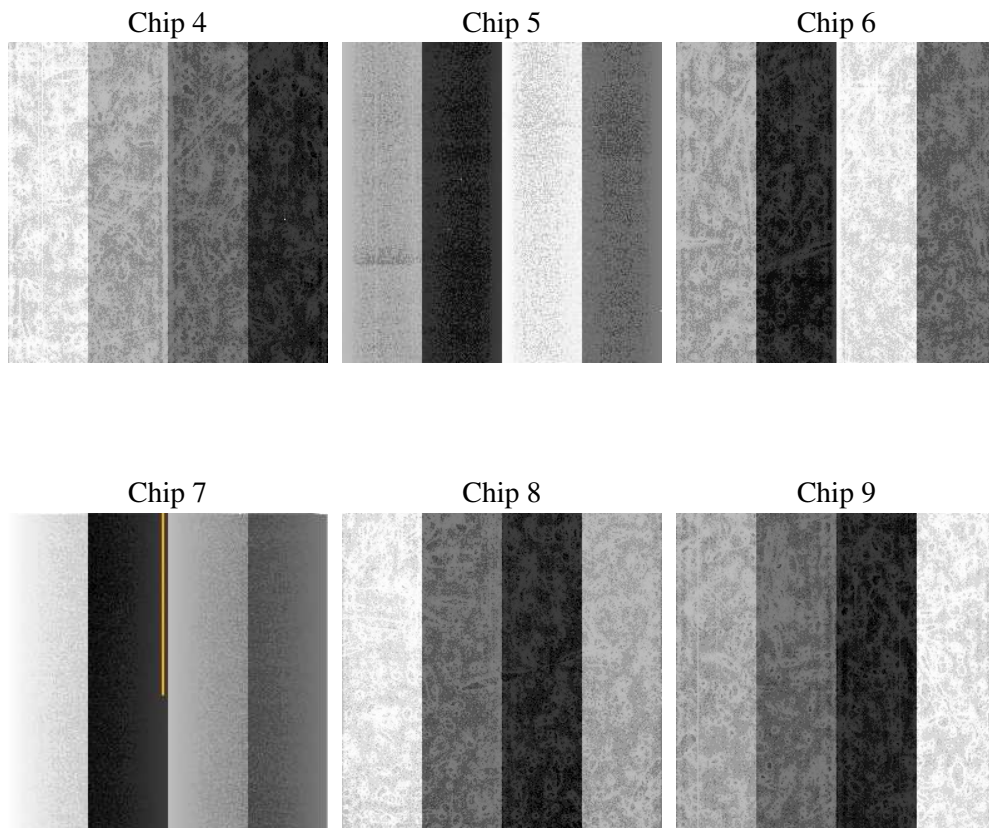
2 OBI

2.1 OBI

2.1.1 Images



2.1.2 Bias



2.1.3 Parameters

obi_num	1
ascdsver	7.6.7.2
caldbver	3.2.2
date	2006-05-29T20:51:31
revision	2

sched_exp_time	0.0
ontime	7402.4591346383
ontime4	3662.363373518
ontime5	7402.4591346383
ontime6	4080.453869313
ontime7	7402.4591346383
ontime8	4223.0569902956
ontime9	3950.8145388365
l1events	1346842

2.1.4 Events

	ccd 4	ccd 5	ccd 6	ccd 7	ccd 8	ccd 9
level 1 events	160804	302348	185595	324631	198042	175422
rejected events	31582	58998	32612	54559	35334	31266
rejected %	19%	19%	17%	16%	17%	17%

	ccd 4	ccd 5	ccd 6	ccd 7	ccd 8	ccd 9
grade 0 events	74450	29684	82126	47514	87632	78443
	46%	9%	44%	14%	44%	44%
grade 1 events	629	177	482	117	523	496
	0%	0%	0%	0%	0%	0%
grade 2 events	20271	114189	26335	82527	28230	24247
	12%	37%	14%	25%	14%	13%
grade 3 events	8451	7767	9450	18959	10421	9089
	5%	2%	5%	5%	5%	5%
grade 4 events	8673	7515	9342	18648	10289	9004
	5%	2%	5%	5%	5%	5%
grade 5 events	1883	5897	2088	6480	2409	2091
	1%	1%	1%	1%	1%	1%
grade 6 events	17494	84305	25874	102539	26243	23479
	10%	27%	13%	31%	13%	13%
grade 7 events	28953	52814	29898	47847	32295	28573
	18%	17%	16%	14%	16%	16%

2.2 Compared Parameters

Parameter	Planned	Actual	Parameter	Planned	Actual
Instrument	ACIS	ACIS	Obspar format version number	6	6
Detector	ACIS-456789	ACIS-456789	Obspar file type	PREDICTED	ACTUAL
Grating	NONE	NONE	Obspar update status	NONE	UPDATED
Data mode	FAINT	FAINT	On-chip summing requested	N	N
Observation mode	SECONDARY	SECONDARY	Subarray requested	NONE	NONE
Pointing RA	0	176.4714454177705	Alternating exposures requested	N	N
Pointing Dec	0	25.38764954727329	Primary exposure time	0.000000	3.2
Pointing Roll	0.0	172.69066996336			
SIM focus pos (mm)	-0.684267	-1.428180813131781			
SIM defocus (mm)	0	0.1051558262725154			
SIM translation stage pos (mm)	-190.132523	250.466033080201			
SIM translation stage offset (mm)	0	-0.01005468664627074			
Observation start time	195553408.058614	195553407.03361			
Observation start date	2004-03-13T08:23:28	2004-03-13T08:23:27			
Observation end time	195573549.309498	195573548.2845			
Observation end date	2004-03-13T13:59:09	2004-03-13T13:59:08			
Read mode	TIMED	TIMED			

2.3 Aspect

2.4 Star Slots

2.5 FID Slots

A Summary

A.1 Status

V&V Scientist	Jen Lauer
V&V Date (YYYY-MM-DD)	2006.05.30
V&V Edition	1
V&V Disposition and Status	OK
V&V Charge Time	7.39839997

A.2 Comments