

V&V Reference Report

L2 ASCDS Version : 8.4.5

Observation 60337 - L2 Version 3
Chandra X-Ray Center

L2 Processing Date : Nov 13 2012

Contents

1	Front	2
2	OBI	3
2.1	OBI	3
2.1.1	Images	3
2.1.2	Bias	3
2.1.3	Parameters	4
2.1.4	Events	4
2.2	Compared Parameters	5
2.3	Star Slots	6
2.4	FID Slots	6
A	Summary	7
A.1	Status	7
A.2	Comments	7

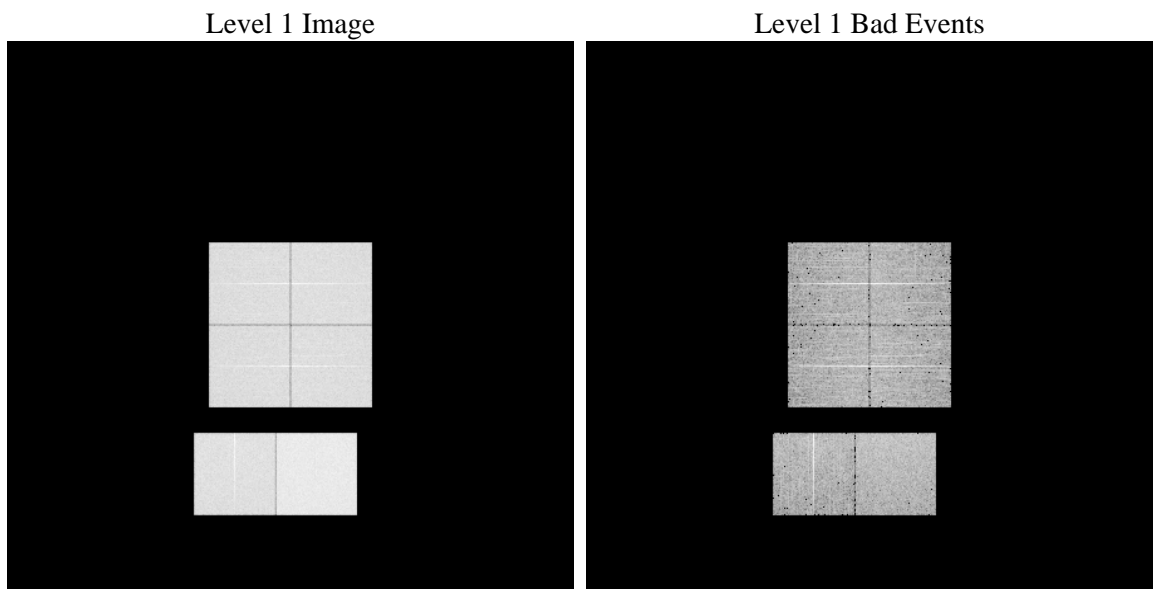
1 Front

seq_num	 	Sequence number
obs_id	60337	Observation id
title	ACIS-012367 diagnostics	Proposal title
observer	CHANDRA engineering request/realtime commanding	Principal investig
object	 	Source name
dtcycle	0	
cycle	P	events from which exps? Prim/Second/Both
ra_targ	0.0	Observer's specified target RA [deg]
dec_targ	0.0	Observer's specified target Dec [deg]
ra_nom	180.97092923583	Nominal RA [deg]
dec_nom	20.990979697068	Nominal Dec [deg]
roll_nom	165.56342214123	Nominal Roll [deg]
revision	3	Processing version of data
ontime	7801.5999709368	Sum of GTIs [s]
livetime	7702.8114145452	Livetime [s]
ontime0	5351.4272648692	Sum of GTIs [s]
ontime1	5519.2983273268	Sum of GTIs [s]
ontime2	5156.9693271816	Sum of GTIs [s]
ontime3	5270.4029574692	Sum of GTIs [s]
ontime6	5600.9823234975	Sum of GTIs [s]
ontime7	7801.5999709368	Sum of GTIs [s]
l2events	1128704	Number of level 2 events

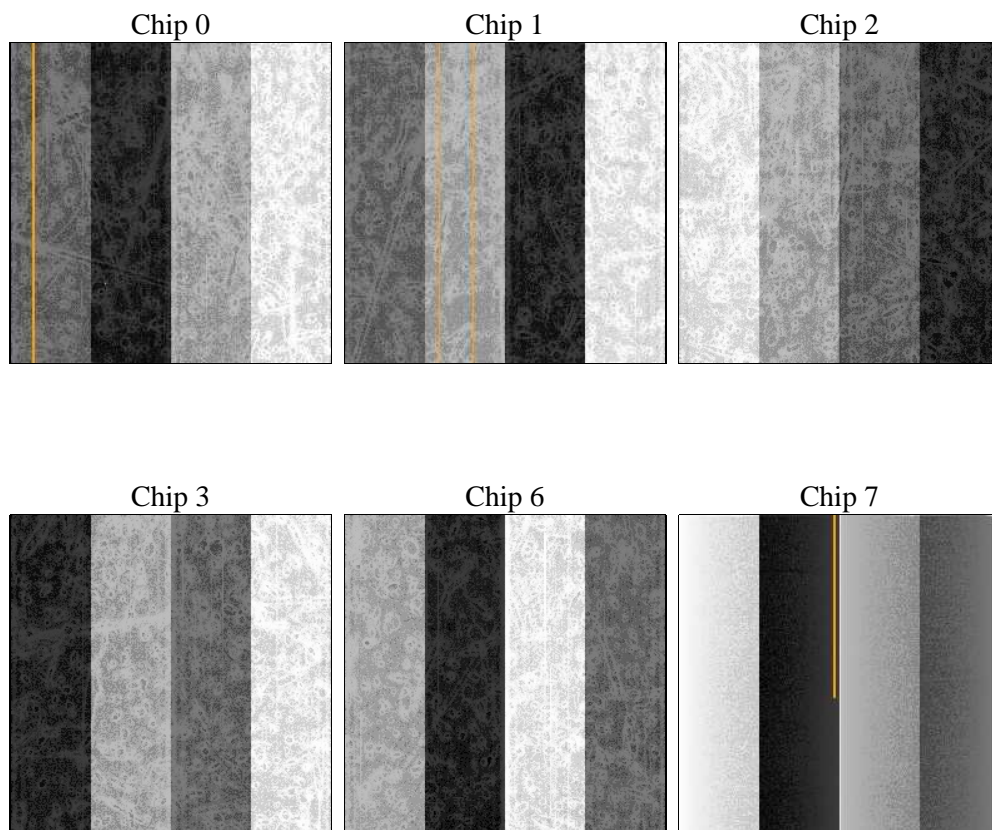
2 OBI

2.1 OBI

2.1.1 Images



2.1.2 Bias



2.1.3 Parameters

obi_num	0	Obi number	sched_exp_time	0.0	[s] Scheduled observation exposure time
ascdsver	8.4.5	Processing system revision	ontime	7801.5999709368	Sum of GTIs [s]
caldsver	4.5.2	 	ontime0	5351.4272648692	Sum of GTIs [s]
date	2012-11-13T19:57:37	Date and time of file creation	ontime1	5519.2983273268	Sum of GTIs [s]
revision	3	Processing version of data	ontime2	5156.9693271816	Sum of GTIs [s]
			ontime3	5270.4029574692	Sum of GTIs [s]
			ontime6	5600.9823234975	Sum of GTIs [s]
			ontime7	7801.5999709368	Sum of GTIs [s]
			l1events	1418192	Number of level 1 events

2.1.4 Events

	ccd 0	ccd 1	ccd 2	ccd 3	ccd 6	ccd 7		ccd 0	ccd 1	ccd 2	ccd 3	ccd 6	ccd 7
level 1 events	214342	219964	209390	216231	234570	323695	grade 0 events	97153	99781	96357	99172	104992	68990
rejected events	36922	37432	37261	38946	39988	44723		45%	45%	46%	45%	44%	21%
rejected %	17%	17%	17%	18%	17%	13%	grade 1 events	518	507	574	593	561	194
								0%	0%	0%	0%	0%	0%
							grade 2 events	31130	32095	29218	30366	33584	61740
								14%	14%	13%	14%	14%	19%
							grade 3 events	11509	11545	11141	11580	11927	27700
								5%	5%	5%	5%	5%	8%
							grade 4 events	11556	11653	11165	11454	12152	27916
								5%	5%	5%	5%	5%	8%
							grade 5 events	2490	2424	2319	2494	2645	8345
								1%	1%	1%	1%	1%	2%
							grade 6 events	26170	27458	24342	24821	32042	92754
								12%	12%	11%	11%	13%	28%
							grade 7 events	33816	34501	34274	35751	36667	36056
								15%	15%	16%	16%	15%	11%

2.2 Compared Parameters

Parameter	Planned	Actual	Parameter	Planned	Actual
Instrument	ACIS	ACIS	Obspar format version number	7	7
Detector	ACIS-012367	ACIS-012367	Obspar file type	PREDICTED	ACTUAL
Grating	NONE	NONE	Obspar update status	NONE	UPDATED
Data mode	FAINT	FAINT	On-chip summing requested	N	N
Observation mode	SECONDARY	SECONDARY	Subarray requested	NONE	NONE
[deg] Pointing RA	0	180.9709292358286	Alternating exposures requested	N	N
[deg] Pointing Dec	0	20.99097969706779	[s] Primary exposure time	0.000000	3.2
[deg] Pointing Roll	0.0	165.5634221412305			
[mm] SIM focus pos	-0.782348	-1.038866356238299			
[mm] SIM defocus	0	0.4944702831659975			
[mm] SIM translation stage pos	-233.592463	250.466033080201			
[mm] SIM translation stage offset	0	-0.01005468664627074			
[s] Observation start time (MET)	195786472.568843	195786471.54384			
Observation start date	2004-03-16T01:07:53	2004-03-16T01:07:51			
[s] Observation end time (MET)	195801007.069481	195801006.04447			
Observation end date	2004-03-16T05:10:07	2004-03-16T05:10:06			
Read mode	TIMED	TIMED			

2.3 Star Slots

2.4 FID Slots

A Summary

A.1 Status

V&V Scientist	Beth Sundheim
V&V Date (YYYY-MM-DD)	2012.12.20
V&V Edition	1
V&V Disposition and Status	OK
V&V Charge Time	7.8015999709368

A.2 Comments