

V&V Reference Report

L2 ASCDS Version : 8.4.5

Observation 60297 - L2 Version 3
Chandra X-Ray Center

L2 Processing Date : Nov 14 2012

Contents

1	Front	2
2	OBI	3
2.1	OBI	3
2.1.1	Images	3
2.1.2	Bias	3
2.1.3	Parameters	4
2.1.4	Events	4
2.2	Compared Parameters	5
2.3	Star Slots	6
2.4	FID Slots	6
A	Summary	7
A.1	Status	7
A.2	Comments	7

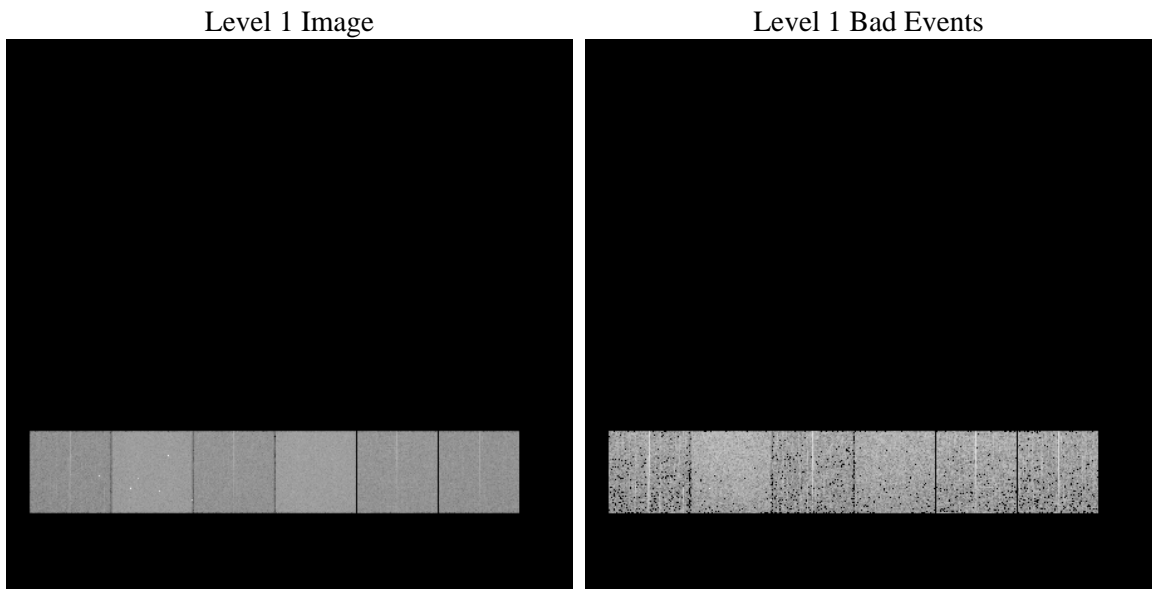
1 Front

seq_num	 	Sequence number
obs_id	60297	Observation id
title	ACIS-456789 diagnostics	Proposal title
observer	CHANDRA engineering request/realtime commanding	Principal investig
object	 	Source name
dtcycle	0	
cycle	P	events from which exps? Prim/Second/Both
ra_targ	0.0	Observer's specified target RA [deg]
dec_targ	0.0	Observer's specified target Dec [deg]
ra_nom	71.058745806318	Nominal RA [deg]
dec_nom	64.985827642903	Nominal Dec [deg]
roll_nom	297.36443357781	Nominal Roll [deg]
revision	3	Processing version of data
ontime	4057.5999848843	Sum of GTIs [s]
livetime	4006.2202106823	Livetime [s]
ontime4	2505.1707978249	Sum of GTIs [s]
ontime5	4057.5999848843	Sum of GTIs [s]
ontime6	2790.3774993122	Sum of GTIs [s]
ontime7	4057.5999848843	Sum of GTIs [s]
ontime8	2809.8234704435	Sum of GTIs [s]
ontime9	2693.1478324831	Sum of GTIs [s]
l2events	583407	Number of level 2 events

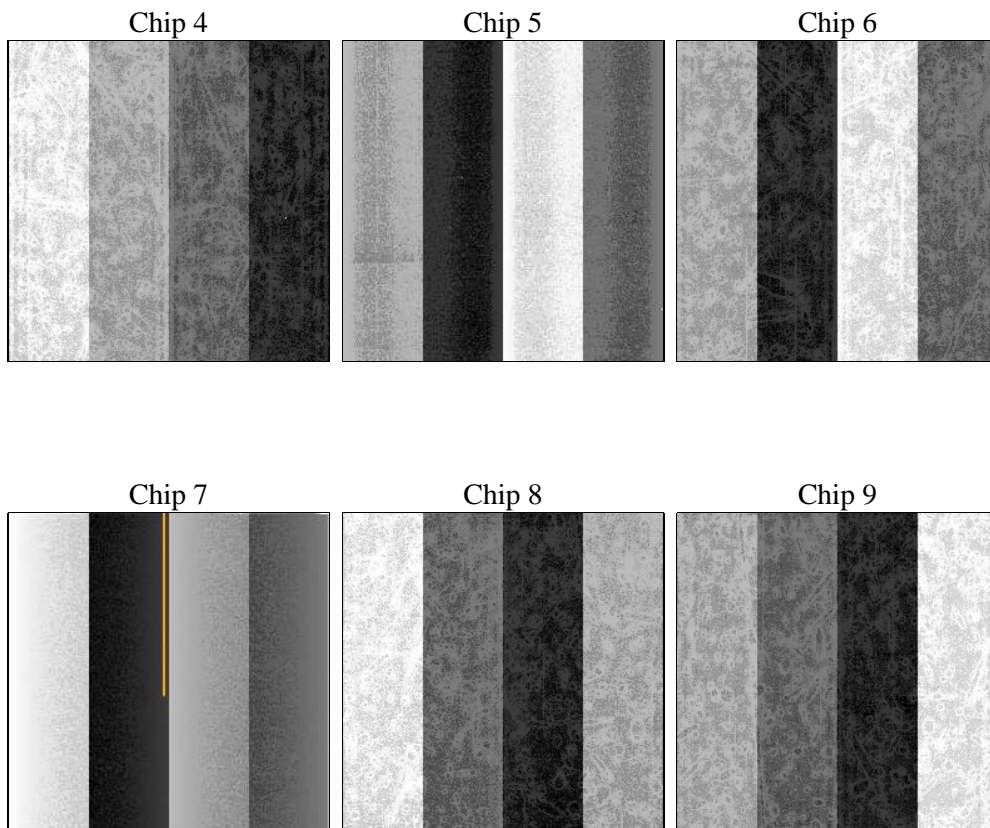
2 OBI

2.1 OBI

2.1.1 Images



2.1.2 Bias



2.1.3 Parameters

obi_num	0	Obi number	sched_exp_time	0.0	[s] Scheduled observation exposure time
ascdsver	8.4.5	Processing system revision	ontime	4057.5999848843	Sum of GTIs [s]
caldsver	4.5.2	 	ontime4	2505.1707978249	Sum of GTIs [s]
date	2012-11-14T08:23:36	Date and time of file creation	ontime5	4057.5999848843	Sum of GTIs [s]
revision	3	Processing version of data	ontime6	2790.3774993122	Sum of GTIs [s]
			ontime7	4057.5999848843	Sum of GTIs [s]
			ontime8	2809.8234704435	Sum of GTIs [s]
			ontime9	2693.1478324831	Sum of GTIs [s]
			l1events	749185	Number of level 1 events

2.1.4 Events

	ccd 4	ccd 5	ccd 6	ccd 7	ccd 8	ccd 9		ccd 4	ccd 5	ccd 6	ccd 7	ccd 8	ccd 9
level 1 events	96714	154701	111431	162089	118004	106246	grade 0 events	45423	30952	50162	34504	51701	47760
rejected events	18801	26812	18837	22833	22525	19998		46%	20%	45%	21%	43%	44%
rejected %	19%	17%	16%	14%	19%	18%	grade 1 events	307	263	241	100	279	284
								0%	0%	0%	0%	0%	0%
							grade 2 events	12473	44826	16181	30838	16788	14684
								12%	28%	14%	19%	14%	13%
							grade 3 events	5061	7856	5766	14132	6267	5588
								5%	5%	5%	8%	5%	5%
							grade 4 events	5200	7841	5804	13754	6277	5486
								5%	5%	5%	8%	5%	5%
							grade 5 events	1109	4370	1375	4253	1499	1380
								1%	2%	1%	2%	1%	1%
							grade 6 events	9836	36505	14776	46141	14565	12823
								10%	23%	13%	28%	12%	12%
							grade 7 events	17305	22088	17126	18367	20628	18241
								17%	14%	15%	11%	17%	17%

2.2 Compared Parameters

Parameter	Planned	Actual
Instrument	ACIS	ACIS
Detector	ACIS-456789	ACIS-456789
Grating	NONE	NONE
Data mode	FAINT	FAINT
Observation mode	SECONDARY	SECONDARY
[deg] Pointing RA	0	71.05874580631779
[deg] Pointing Dec	0	64.98582764290266
[deg] Pointing Roll	0.0	297.3644335778122
[mm] SIM focus pos	-0.684267	-0.6828225247311905
[mm] SIM defocus	0	0.8505141146731063
[mm] SIM translation stage pos	-190.132523	250.4635187648994
[mm] SIM translation stage offset	0	-0.007540371344731511
[s] Observation start time (MET)	197384859.689035	197384858.66404
Observation start date	2004-04-03T13:07:40	2004-04-03T13:07:38
[s] Observation end time (MET)	197402106.339792	197402105.3148
Observation end date	2004-04-03T17:55:06	2004-04-03T17:55:05
Read mode	TIMED	TIMED

Parameter	Planned	Actual
Obspar format version number	7	7
Obspar file type	PREDICTED	ACTUAL
Obspar update status	NONE	UPDATED
On-chip summing requested	N	N
Subarray requested	NONE	NONE
Alternating exposures requested	N	N
[s] Primary exposure time	0.000000	3.2

2.3 Star Slots

2.4 FID Slots

A Summary

A.1 Status

V&V Scientist	Beth Sundheim
V&V Date (YYYY-MM-DD)	2012.12.21
V&V Edition	1
V&V Disposition and Status	OK
V&V Charge Time	4.0575999848843

A.2 Comments