

V&V Reference Report

L2 ASCDS Version : 7.6.7.2

Observation 60287 - L2 Version 001
Chandra X-Ray Center

L2 Processing Date : May 25 2006

Contents

1	Front	2
2	OBI	3
2.1	OBI	3
2.1.1	Images	3
2.1.2	Bias	3
2.1.3	Parameters	4
2.1.4	Events	4
2.2	Compared Parameters	5
2.3	Aspect	6
2.4	Star Slots	8
2.5	FID Slots	8
A	Summary	9
A.1	Status	9
A.2	Comments	9

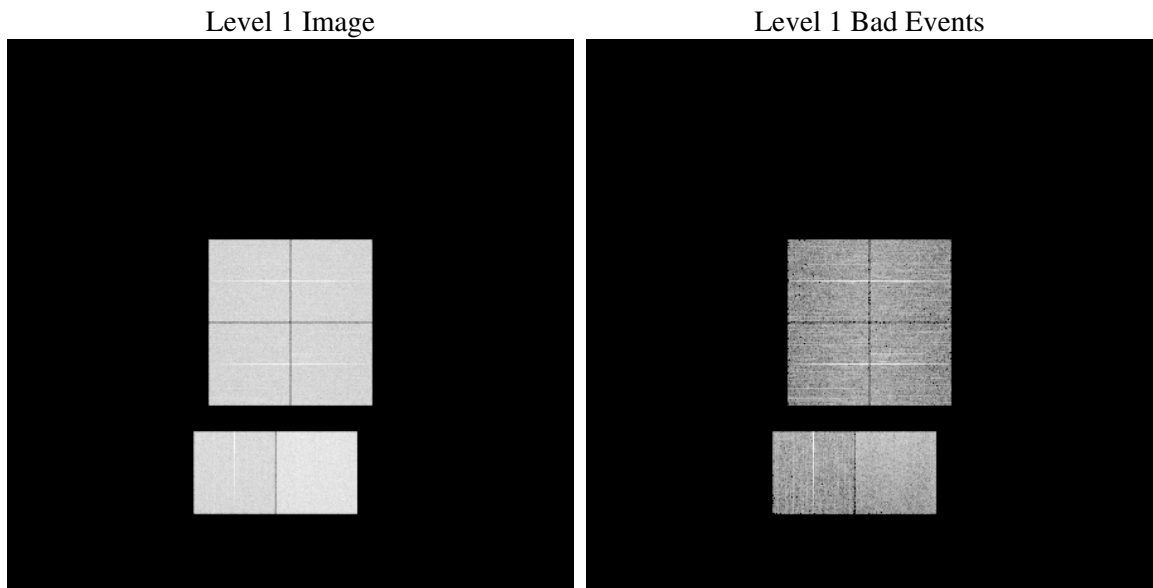
1 Front

seq_num	
obs_id	60287
title	ACIS-012367 diagnostics
observer	CHANDRA engineering request/realtime commanding
object	
dtcycle	0
cycle	P
ra_targ	0.0
dec_targ	0.0
ra_nom	198.02646092537
dec_nom	-23.984734985899
roll_nom	359.41948971403
revision	2
ontime	8460.7999684811
livetime	8353.664224798
ontime0	6221.2877641022
ontime1	6293.1797247529
ontime2	5945.803704679
ontime3	6043.0323952734
ontime6	6444.9134885669
ontime7	8460.7999684811
l2events	1202004

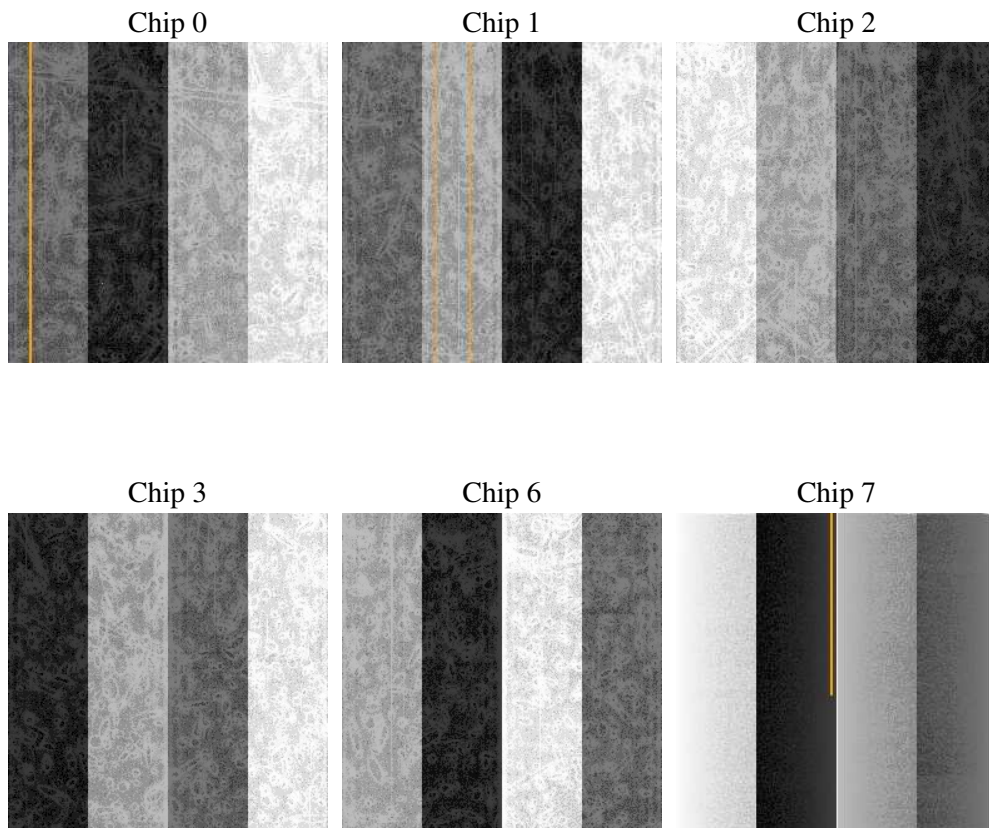
2 OBI

2.1 OBI

2.1.1 Images



2.1.2 Bias



2.1.3 Parameters

obi_num	0
ascdsver	7.6.7.2
caldbver	3.2.2
date	2006-05-25T17:31:18
revision	2

sched_exp_time	0.0
ontime	8462.2643022239
ontime0	6222.7520978451
ontime1	6294.0523378849
ontime2	5947.2680384219
ontime3	6044.4967290163
ontime6	6446.3778223097
ontime7	8462.2643022239
l1events	1533631

2.1.4 Events

	ccd 0	ccd 1	ccd 2	ccd 3	ccd 6	ccd 7
level 1 events	235273	238471	231147	233646	256948	338146
rejected events	40610	41902	42233	42217	45145	60858
rejected %	17%	17%	18%	18%	17%	17%

	ccd 0	ccd 1	ccd 2	ccd 3	ccd 6	ccd 7
grade 0 events	106998	107899	105759	107448	114996	47958
	45%	45%	45%	45%	44%	14%
grade 1 events	582	526	642	604	604	130
	0%	0%	0%	0%	0%	0%
grade 2 events	33977	34819	31867	32825	36142	84089
	14%	14%	13%	14%	14%	24%
grade 3 events	12590	12520	12381	12454	13346	19840
	5%	5%	5%	5%	5%	5%
grade 4 events	12609	12632	12305	12537	13288	19517
	5%	5%	5%	5%	5%	5%
grade 5 events	2739	2760	2586	2813	3081	7317
	1%	1%	1%	1%	1%	2%
grade 6 events	28489	28699	26602	26165	34031	105884
	12%	12%	11%	11%	13%	31%
grade 7 events	37289	38616	39005	38800	41460	53411
	15%	16%	16%	16%	16%	15%

2.2 Compared Parameters

Parameter	Planned	Actual	Parameter	Planned	Actual
Instrument	ACIS	ACIS	Obspar format version number	6	6
Detector	ACIS-012367	ACIS-012367	Obspar file type	PREDICTED	ACTUAL
Grating	NONE	NONE	Obspar update status	NONE	UPDATED
Data mode	FAINT	FAINT	On-chip summing requested	N	N
Observation mode	SECONDARY	SECONDARY	Subarray requested	NONE	NONE
Pointing RA	0	198.0264609253658	Alternating exposures requested	N	N
Pointing Dec	0	-23.98473498589855	Primary exposure time	0.000000	3.2
Pointing Roll	0.0	359.419489714032			
SIM focus pos (mm)	-0.782348	-0.6828225247311905			
SIM defocus (mm)	0	0.8505141146731063			
SIM translation stage pos (mm)	-233.592463	250.466033080201			
SIM translation stage offset (mm)	0	-0.01005468664627074			
Observation start time	197878487.410749	197878486.38575			
Observation start date	2004-04-09T06:14:47	2004-04-09T06:14:46			
Observation end time	197902609.76181	197902608.73681			
Observation end date	2004-04-09T12:56:50	2004-04-09T12:56:48			
Read mode	TIMED	TIMED			

2.3 Aspect

2.4 Star Slots

2.5 FID Slots

A Summary

A.1 Status

V&V Scientist	Beth Sundheim
V&V Date (YYYY-MM-DD)	2006.05.25
V&V Edition	1
V&V Disposition and Status	OK
V&V Charge Time	8.46079996

A.2 Comments