

V&V Reference Report

L2 ASCDS Version : 7.6.7.2

Observation 60274 - L2 Version 001
Chandra X-Ray Center

L2 Processing Date : May 25 2006

Contents

1	Front	2
2	OBI	3
2.1	OBI	3
2.1.1	Images	3
2.1.2	Bias	3
2.1.3	Parameters	4
2.1.4	Events	4
2.2	Compared Parameters	5
2.3	Aspect	6
2.4	Star Slots	8
2.5	FID Slots	8
A	Summary	9
A.1	Status	9
A.2	Comments	9

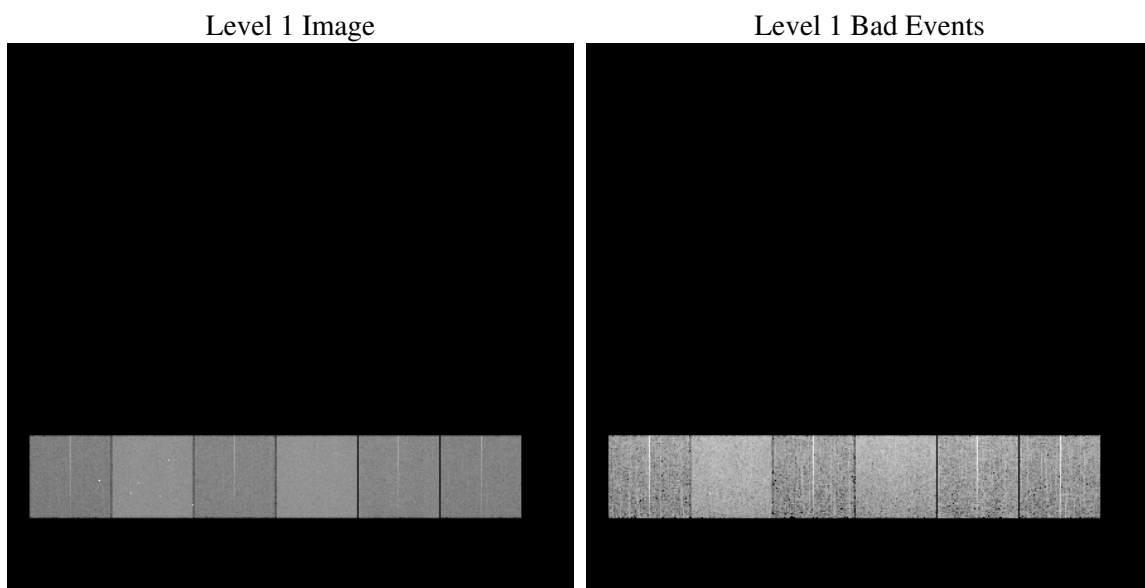
1 Front

seq_num	
obs_id	60274
title	ACIS-456789 diagnostics
observer	CHANDRA engineering request/realtime commanding
object	
dtcycle	0
cycle	P
ra_targ	0.0
dec_targ	0.0
ra_nom	232.97809518757
dec_nom	-2.9815623469758
roll_nom	106.94194901635
revision	2
ontime	7759.9999710917
livetime	7661.7381789468
ontime4	4729.6844621301
ontime5	7759.9999710917
ontime6	5184.5074166059
ontime7	7759.9999710917
ontime8	5335.748387605
ontime9	5021.3730130494
l2events	1071949

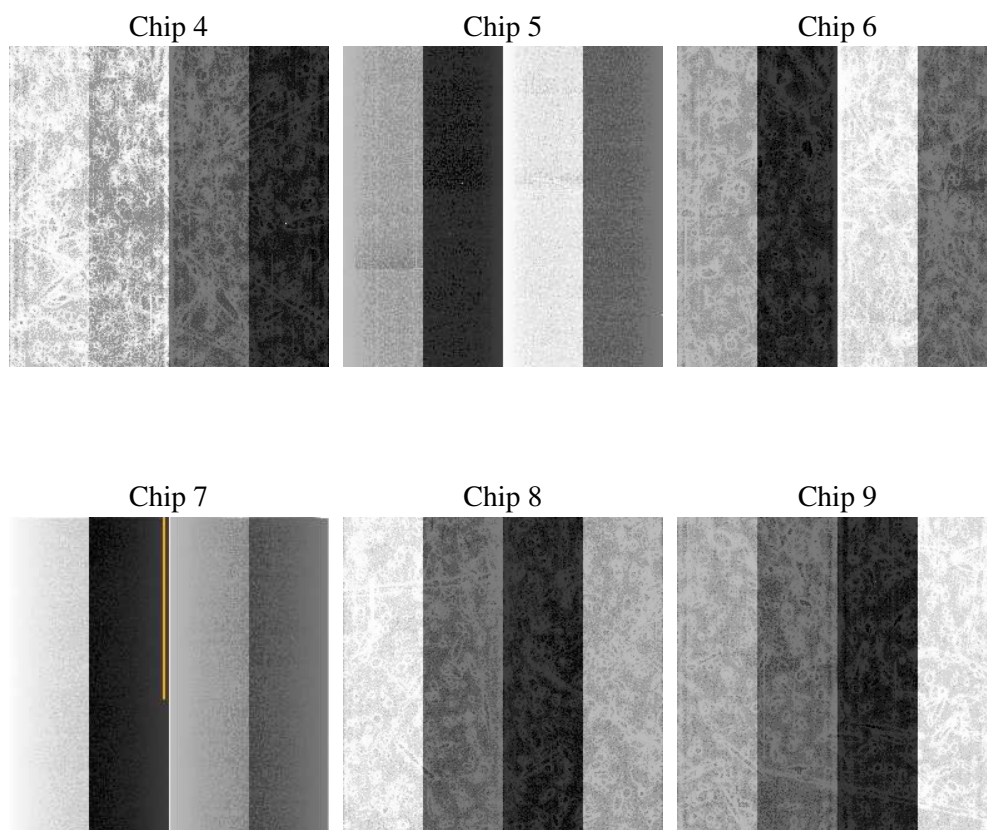
2 OBI

2.1 OBI

2.1.1 Images



2.1.2 Bias



2.1.3 Parameters

obi_num	0
ascdsver	7.6.7.2
caldbver	3.2.2
date	2006-05-25T18:55:01
revision	2

sched_exp_time	0.0
ontime	7762.2103818059
ontime4	4731.8948728442
ontime5	7762.2103818059
ontime6	5185.6331843734
ontime7	7762.2103818059
ontime8	5337.9587983191
ontime9	5023.5834237635
l1events	1407495

2.1.4 Events

	ccd 4	ccd 5	ccd 6	ccd 7	ccd 8	ccd 9
level 1 events	180322	290219	208620	309923	221451	196960
rejected events	36396	60433	38476	56466	43741	38725
rejected %	20%	20%	18%	18%	19%	19%

	ccd 4	ccd 5	ccd 6	ccd 7	ccd 8	ccd 9
grade 0 events	84028	26529	92362	44258	96744	86826
	46%	9%	44%	14%	43%	44%
grade 1 events	639	108	467	111	517	532
	0%	0%	0%	0%	0%	0%
grade 2 events	22828	107675	29305	76348	31024	27276
	12%	37%	14%	24%	14%	13%
grade 3 events	9625	7425	10506	18350	11636	10078
	5%	2%	5%	5%	5%	5%
grade 4 events	9595	7312	10566	17833	11574	10113
	5%	2%	5%	5%	5%	5%
grade 5 events	2279	6297	2499	6913	3023	2687
	1%	2%	1%	2%	1%	1%
grade 6 events	17850	80845	27405	96668	26732	23942
	9%	27%	13%	31%	12%	12%
grade 7 events	33478	54028	35510	49442	40201	35506
	18%	18%	17%	15%	18%	18%

2.2 Compared Parameters

Parameter	Planned	Actual	Parameter	Planned	Actual
Instrument	ACIS	ACIS	Obspar format version number	6	6
Detector	ACIS-456789	ACIS-456789	Obspar file type	PREDICTED	ACTUAL
Grating	NONE	NONE	Obspar update status	NONE	UPDATED
Data mode	FAINT	FAINT	On-chip summing requested	N	N
Observation mode	SECONDARY	SECONDARY	Subarray requested	NONE	NONE
Pointing RA	0	232.9780951875678	Alternating exposures requested	N	N
Pointing Dec	0	-2.981562346975802	Primary exposure time	0.000000	3.2
Pointing Roll	0.0	106.9419490163546			
SIM focus pos (mm)	-0.684267	-0.6828225247311905			
SIM defocus (mm)	0	0.8505141146731063			
SIM translation stage pos (mm)	-190.132523	250.466033080201			
SIM translation stage offset (mm)	0	-0.01005468664627074			
Observation start time	198564614.240954	198564613.21596			
Observation start date	2004-04-17T04:50:14	2004-04-17T04:50:13			
Observation end time	198586674.291926	198586673.26693			
Observation end date	2004-04-17T10:57:54	2004-04-17T10:57:53			
Read mode	TIMED	TIMED			

2.3 Aspect

2.4 Star Slots

2.5 FID Slots

A Summary

A.1 Status

V&V Scientist	Beth Sundheim
V&V Date (YYYY-MM-DD)	2006.05.25
V&V Edition	1
V&V Disposition and Status	OK
V&V Charge Time	7.75999997

A.2 Comments