

# V&V Reference Report

## L2 ASCDS Version : 7.6.7.2

Observation 60269 - L2 Version 001  
Chandra X-Ray Center

L2 Processing Date : May 25 2006

## Contents

<b>1</b>	<b>Front</b>	<b>2</b>
<b>2</b>	<b>OBI</b>	<b>3</b>
2.1	OBI . . . . .	3
2.1.1	Images . . . . .	3
2.1.2	Bias . . . . .	3
2.1.3	Parameters . . . . .	4
2.1.4	Events . . . . .	4
2.2	Compared Parameters . . . . .	5
2.3	Aspect . . . . .	6
2.4	Star Slots . . . . .	8
2.5	FID Slots . . . . .	8
<b>A</b>	<b>Summary</b>	<b>9</b>
A.1	Status . . . . .	9
A.2	Comments . . . . .	9

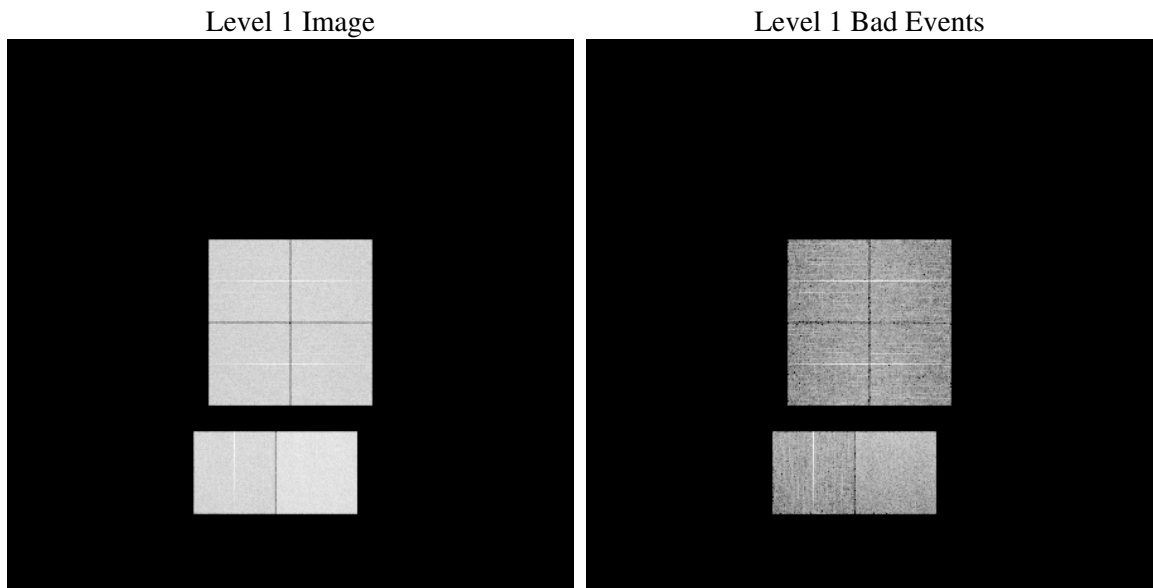
# 1 Front

seq_num	&#160
obs_id	60269
title	ACIS-012367 diagnostics
observer	CHANDRA engineering request/realtime commanding
object	&#160
dtcycle	0
cycle	P
ra_targ	0.0
dec_targ	0.0
ra_nom	150.02526838206
dec_nom	-40.021145856089
roll_nom	279.72855142486
revision	2
ontime	8377.599968791
livetime	8271.5177536011
ontime0	6079.7514475584
ontime1	6222.3536713421
ontime2	5875.5694924295
ontime3	5995.4854925573
ontime6	6429.7756304443
ontime7	8377.599968791
l2events	1182095

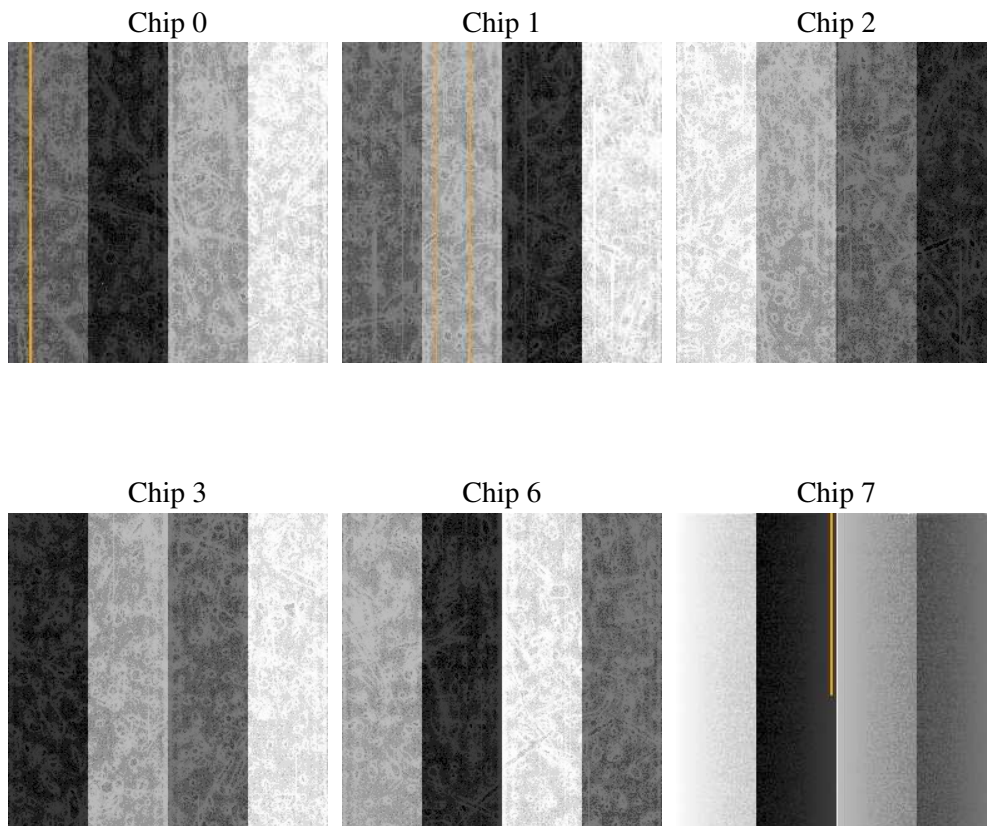
## 2 OBI

### 2.1 OBI

#### 2.1.1 Images



#### 2.1.2 Bias



### 2.1.3 Parameters

obi_num	0
ascdsver	7.6.7.2
caldbver	3.2.2
date	2006-05-25T19:24:19
revision	2

sched_exp_time	0.0
ontime	8462.2625727057
ontime0	6141.727209568
ontime1	6287.5704136491
ontime2	5937.545294404
ontime3	6047.7383637428
ontime6	6491.7513724864
ontime7	8462.2625727057
l1events	1533622

### 2.1.4 Events

	ccd 0	ccd 1	ccd 2	ccd 3	ccd 6	ccd 7
level 1 events	234452	239212	227884	234313	259221	338540
rejected events	44760	45453	43558	45900	49033	64705
rejected %	19%	19%	19%	19%	18%	19%

	ccd 0	ccd 1	ccd 2	ccd 3	ccd 6	ccd 7
grade 0 events	105255	107180	104084	106861	114935	48331
	44%	44%	45%	45%	44%	14%
grade 1 events	625	594	615	688	601	141
	0%	0%	0%	0%	0%	0%
grade 2 events	33625	34911	31545	32286	36560	83673
	14%	14%	13%	13%	14%	24%
grade 3 events	12519	12574	12329	12527	13175	19720
	5%	5%	5%	5%	5%	5%
grade 4 events	12377	12361	12045	12442	13037	19595
	5%	5%	5%	5%	5%	5%
grade 5 events	2766	2911	2571	2899	3153	7487
	1%	1%	1%	1%	1%	2%
grade 6 events	27798	28798	26297	25971	34460	105300
	11%	12%	11%	11%	13%	31%
grade 7 events	39487	39883	38398	40639	43300	54293
	16%	16%	16%	17%	16%	16%

## 2.2 Compared Parameters

Parameter	Planned	Actual	Parameter	Planned	Actual
Instrument	ACIS	ACIS	Obspar format version number	6	6
Detector	ACIS-012367	ACIS-012367	Obspar file type	PREDICTED	ACTUAL
Grating	NONE	NONE	Obspar update status	NONE	UPDATED
Data mode	FAINT	FAINT	On-chip summing requested	N	N
Observation mode	SECONDARY	SECONDARY	Subarray requested	NONE	NONE
Pointing RA	0	150.0252683820634	Alternating exposures requested	N	N
Pointing Dec	0	-40.0211458560895	Primary exposure time	0.000000	3.2
Pointing Roll	0.0	279.7285514248607			
SIM focus pos (mm)	-0.782348	-0.6828225247311905			
SIM defocus (mm)	0	0.8505141146731063			
SIM translation stage pos (mm)	-233.592463	250.466033080201			
SIM translation stage offset (mm)	0	-0.01005468664627074			
Observation start time	198799390.501299	198799389.4763			
Observation start date	2004-04-19T22:03:11	2004-04-19T22:03:09			
Observation end time	198812662.201883	198812661.17688			
Observation end date	2004-04-20T01:44:22	2004-04-20T01:44:21			
Read mode	TIMED	TIMED			

## 2.3 Aspect



## **2.4 Star Slots**

## **2.5 FID Slots**



## A Summary

### A.1 Status

V&V Scientist	Beth Sundheim
V&V Date (YYYY-MM-DD)	2006.05.25
V&V Edition	1
V&V Disposition and Status	OK
V&V Charge Time	8.37759996

### A.2 Comments