

V&V Reference Report

L2 ASCDS Version : 7.6.7.2

Observation 60267 - L2 Version 001
Chandra X-Ray Center

L2 Processing Date : May 25 2006

Contents

1	Front	2
2	OBI	3
2.1	OBI	3
2.1.1	Images	3
2.1.2	Bias	3
2.1.3	Parameters	4
2.1.4	Events	4
2.2	Compared Parameters	5
2.3	Aspect	6
2.4	Star Slots	8
2.5	FID Slots	8
A	Summary	9
A.1	Status	9
A.2	Comments	9

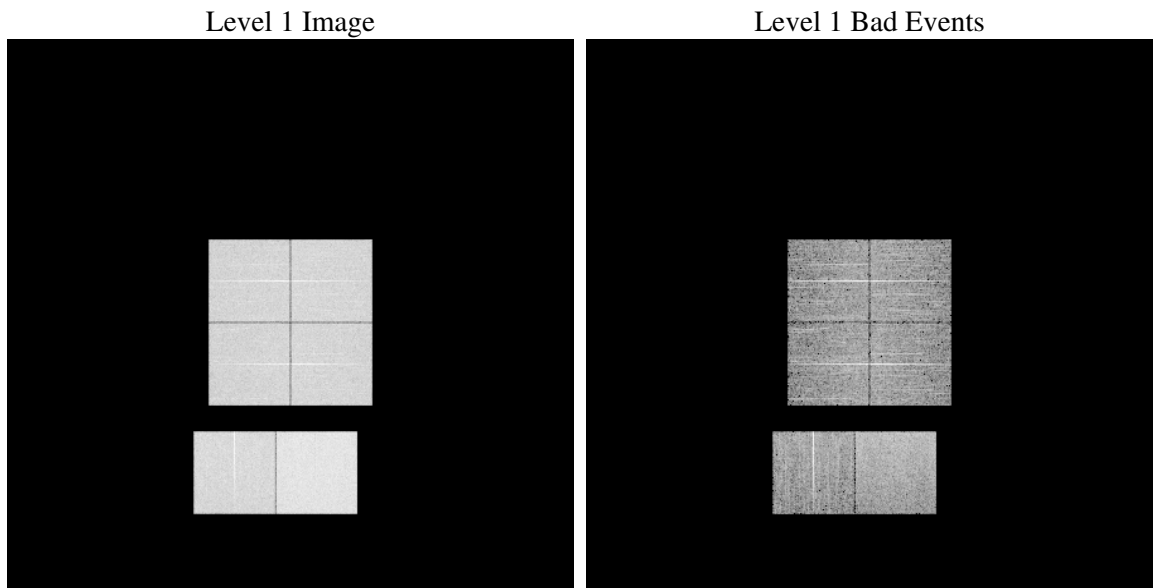
1 Front

seq_num	
obs_id	60267
title	ACIS-012367 diagnostics
observer	CHANDRA engineering request/realtime commanding
object	
dtcycle	0
cycle	P
ra_targ	0.0
dec_targ	0.0
ra_nom	261.97641625906
dec_nom	9.0165932189858
roll_nom	111.61095696994
revision	2
ontime	7801.4554703534
livetime	7702.6687437152
ontime0	5613.8432027102
ontime1	5821.3061309457
ontime2	5458.3586800694
ontime3	5620.2435412109
ontime6	5980.1762935817
ontime7	7801.4554703534
l2events	1104659

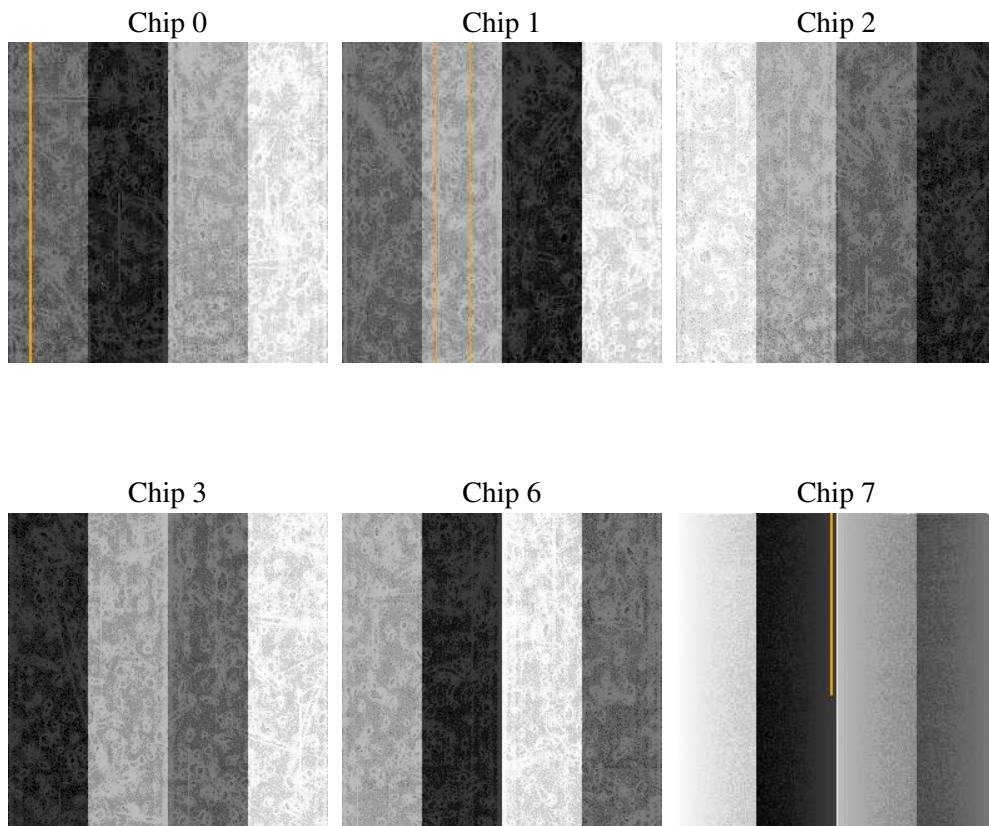
2 OBI

2.1 OBI

2.1.1 Images



2.1.2 Bias



2.1.3 Parameters

obi_num	0
ascdsver	7.6.7.2
caldsver	3.2.2
date	2006-05-25T05:05:49
revision	2

sched_exp_time	0.0
ontime	7804.3322137892
ontime0	5616.6789061427
ontime1	5824.1007943749
ontime2	5461.1123034954
ontime3	5623.16132465
ontime6	5982.9085364342
ontime7	7804.3322137892
l1events	1416597

2.1.4 Events

	ccd 0	ccd 1	ccd 2	ccd 3	ccd 6	ccd 7
level 1 events	214295	221750	211816	218137	238537	312062
rejected events	39150	40308	39512	40569	42761	55452
rejected %	18%	18%	18%	18%	17%	17%

	ccd 0	ccd 1	ccd 2	ccd 3	ccd 6	ccd 7
grade 0 events	96634	99434	96498	99729	106058	46079
	45%	44%	45%	45%	44%	14%
grade 1 events	608	515	650	633	559	136
	0%	0%	0%	0%	0%	0%
grade 2 events	30510	32142	29002	29885	34000	76644
	14%	14%	13%	13%	14%	24%
grade 3 events	11384	11447	11218	11749	12342	19002
	5%	5%	5%	5%	5%	6%
grade 4 events	11481	11585	11262	11675	12188	18628
	5%	5%	5%	5%	5%	5%
grade 5 events	2522	2696	2427	2781	2885	6963
	1%	1%	1%	1%	1%	2%
grade 6 events	25236	26937	24434	24615	31310	96362
	11%	12%	11%	11%	13%	30%
grade 7 events	35920	36994	36325	37070	39195	48248
	16%	16%	17%	16%	16%	15%

2.2 Compared Parameters

Parameter	Planned	Actual	Parameter	Planned	Actual
Instrument	ACIS	ACIS	Obspar format version number	6	6
Detector	ACIS-012367	ACIS-012367	Obspar file type	PREDICTED	ACTUAL
Grating	NONE	NONE	Obspar update status	NONE	UPDATED
Data mode	FAINT	FAINT	On-chip summing requested	N	N
Observation mode	SECONDARY	SECONDARY	Subarray requested	NONE	NONE
Pointing RA	0	261.976416259063	Alternating exposures requested	N	N
Pointing Dec	0	9.016593218985834	Primary exposure time	0.000000	3.2
Pointing Roll	0.0	111.6109569699405			
SIM focus pos (mm)	-0.782348	-0.6828225247311905			
SIM defocus (mm)	0	0.8505141146731063			
SIM translation stage pos (mm)	-233.592463	250.466033080201			
SIM translation stage offset (mm)	0	-0.01005468664627074			
Observation start time	198984888.859489	198984887.83447			
Observation start date	2004-04-22T01:34:49	2004-04-22T01:34:47			
Observation end time	198998738.6601	198998737.63508			
Observation end date	2004-04-22T05:25:39	2004-04-22T05:25:37			
Read mode	TIMED	TIMED			

2.3 Aspect

2.4 Star Slots

2.5 FID Slots

A Summary

A.1 Status

V&V Scientist	Jen Lauer
V&V Date (YYYY-MM-DD)	2006.05.25
V&V Edition	1
V&V Disposition and Status	OK
V&V Charge Time	7.80145547

A.2 Comments