

V&V Reference Report

L2 ASCDS Version : 7.6.7.2

Observation 60264 - L2 Version 001
Chandra X-Ray Center

L2 Processing Date : May 22 2006

Contents

1	Front	2
2	OBI	3
2.1	OBI	3
2.1.1	Images	3
2.1.2	Bias	3
2.1.3	Parameters	4
2.1.4	Events	4
2.2	Compared Parameters	5
2.3	Aspect	6
2.4	Star Slots	8
2.5	FID Slots	8
A	Summary	9
A.1	Status	9
A.2	Comments	9

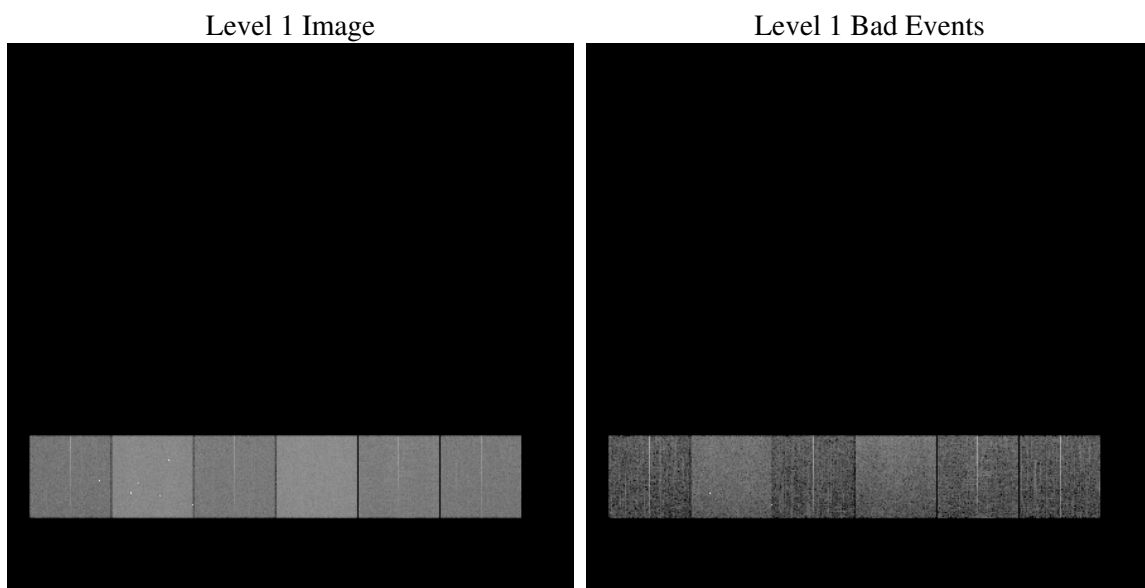
1 Front

seq_num	
obs_id	60264
title	ACIS-456789 diagnostics
observer	CHANDRA engineering request/realtime commanding
object	
dtcycle	0
cycle	P
ra_targ	0.0
dec_targ	0.0
ra_nom	261.97581061936
dec_nom	9.0157304469295
roll_nom	113.66571038233
revision	2
ontime	7800.6623217165
livetime	7701.885638404
ontime4	4417.2111186385
ontime5	7800.7033617198
ontime6	4844.979557991
ontime7	7800.6623217165
ontime8	4994.1464309692
ontime9	4750.8685603142
l2events	1083338

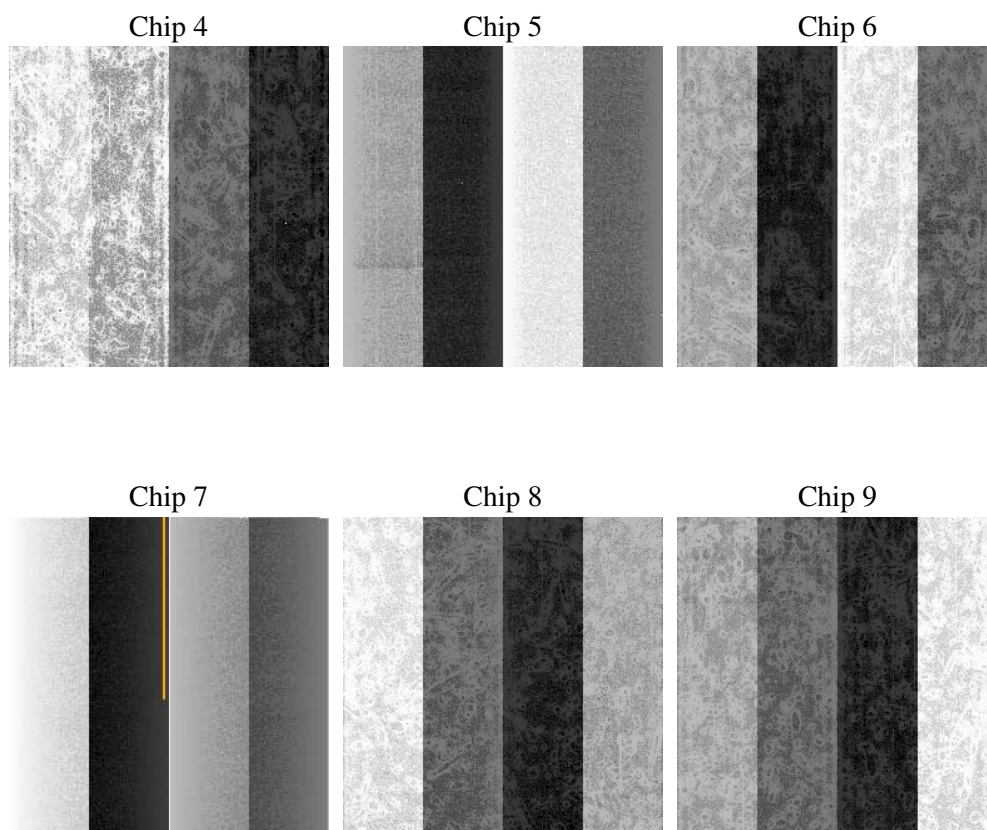
2 OBI

2.1 OBI

2.1.1 Images



2.1.2 Bias



2.1.3 Parameters

obi_num	0
ascdsver	7.6.7.2
caldsver	3.2.2
date	2006-05-22T14:13:14
revision	2

sched_exp_time	0.0
ontime	7801.0905837417
ontime4	4417.5162606537
ontime5	7801.0905837417
ontime6	4845.3257400095
ontime7	7801.0905837417
ontime8	4994.410533011
ontime9	4751.3378623426
l1events	1415739

2.1.4 Events

	ccd 4	ccd 5	ccd 6	ccd 7	ccd 8	ccd 9
level 1 events	177588	302520	202954	321803	217518	193356
rejected events	36344	62219	36396	55562	41899	36898
rejected %	20%	20%	17%	17%	19%	19%

	ccd 4	ccd 5	ccd 6	ccd 7	ccd 8	ccd 9
grade 0 events	81686	29704	90309	48438	95062	86031
	45%	9%	44%	15%	43%	44%
grade 1 events	624	233	465	127	510	533
	0%	0%	0%	0%	0%	0%
grade 2 events	22229	111512	28837	79026	30439	26754
	12%	36%	14%	24%	13%	13%
grade 3 events	9553	7919	10321	19728	11572	9956
	5%	2%	5%	6%	5%	5%
grade 4 events	9443	7708	10075	19618	11384	9866
	5%	2%	4%	6%	5%	5%
grade 5 events	2140	6558	2373	6977	2842	2450
	1%	2%	1%	2%	1%	1%
grade 6 events	18333	83458	27016	99431	27162	23851
	10%	27%	13%	30%	12%	12%
grade 7 events	33580	55428	33558	48458	38547	33915
	18%	18%	16%	15%	17%	17%

2.2 Compared Parameters

Parameter	Planned	Actual	Parameter	Planned	Actual
Instrument	ACIS	ACIS	Obspar format version number	6	6
Detector	ACIS-456789	ACIS-456789	Obspar file type	PREDICTED	ACTUAL
Grating	NONE	NONE	Obspar update status	NONE	UPDATED
Data mode	FAINT	FAINT	On-chip summing requested	N	N
Observation mode	SECONDARY	SECONDARY	Subarray requested	NONE	NONE
Pointing RA	0	261.9758106193638	Alternating exposures requested	N	N
Pointing Dec	0	9.015730446929521	Primary exposure time	0.000000	3.2
Pointing Roll	0.0	113.6657103823311			
SIM focus pos (mm)	-0.684267	-0.6828225247311905			
SIM defocus (mm)	0	0.8505141146731063			
SIM translation stage pos (mm)	-190.132523	250.466033080201			
SIM translation stage offset (mm)	0	-0.01005468664627074			
Observation start time	199213398.269548	199213397.24454			
Observation start date	2004-04-24T17:03:18	2004-04-24T17:03:17			
Observation end time	199227159.920154	199227158.89515			
Observation end date	2004-04-24T20:52:40	2004-04-24T20:52:38			
Read mode	TIMED	TIMED			

2.3 Aspect

2.4 Star Slots

2.5 FID Slots

A Summary

A.1 Status

V&V Scientist	Jen Lauer
V&V Date (YYYY-MM-DD)	2006.05.22
V&V Edition	1
V&V Disposition and Status	OK
V&V Charge Time	7.80066232

A.2 Comments