

V&V Reference Report

L2 ASCDS Version : 7.6.7.2

Observation 60244 - L2 Version 001
Chandra X-Ray Center

L2 Processing Date : May 20 2006

Contents

1	Front	2
2	OBI	3
2.1	OBI	3
2.1.1	Images	3
2.1.2	Bias	3
2.1.3	Parameters	4
2.1.4	Events	4
2.2	Compared Parameters	5
2.3	Aspect	6
2.4	Star Slots	8
2.5	FID Slots	8
A	Summary	9
A.1	Status	9
A.2	Comments	9

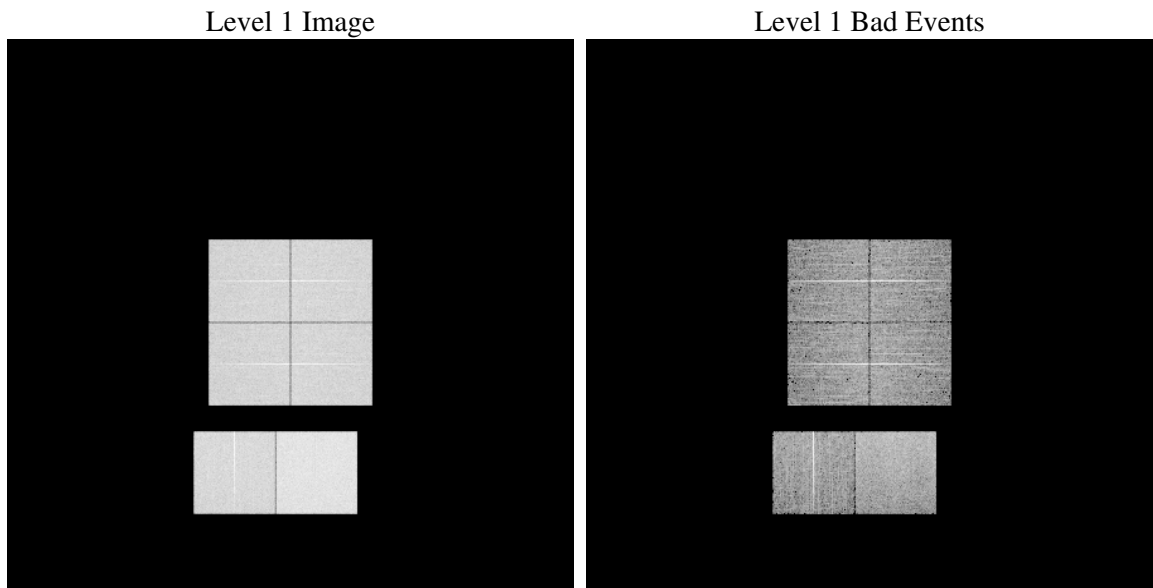
1 Front

seq_num	
obs_id	60244
title	ACIS-012367 diagnostics
observer	CHANDRA engineering request/realtime commanding
object	
dtcycle	0
cycle	P
ra_targ	0.0
dec_targ	0.0
ra_nom	227.67137038239
dec_nom	-7.7031880875785
roll_nom	153.44447200869
revision	2
ontime	8462.9755424559
livetime	8355.8122503453
ontime0	6249.4335308075
ontime1	6430.968996048
ontime2	5983.7553500235
ontime3	6200.7364775538
ontime6	6593.0995005667
ontime7	8462.9755424559
l2events	1195841

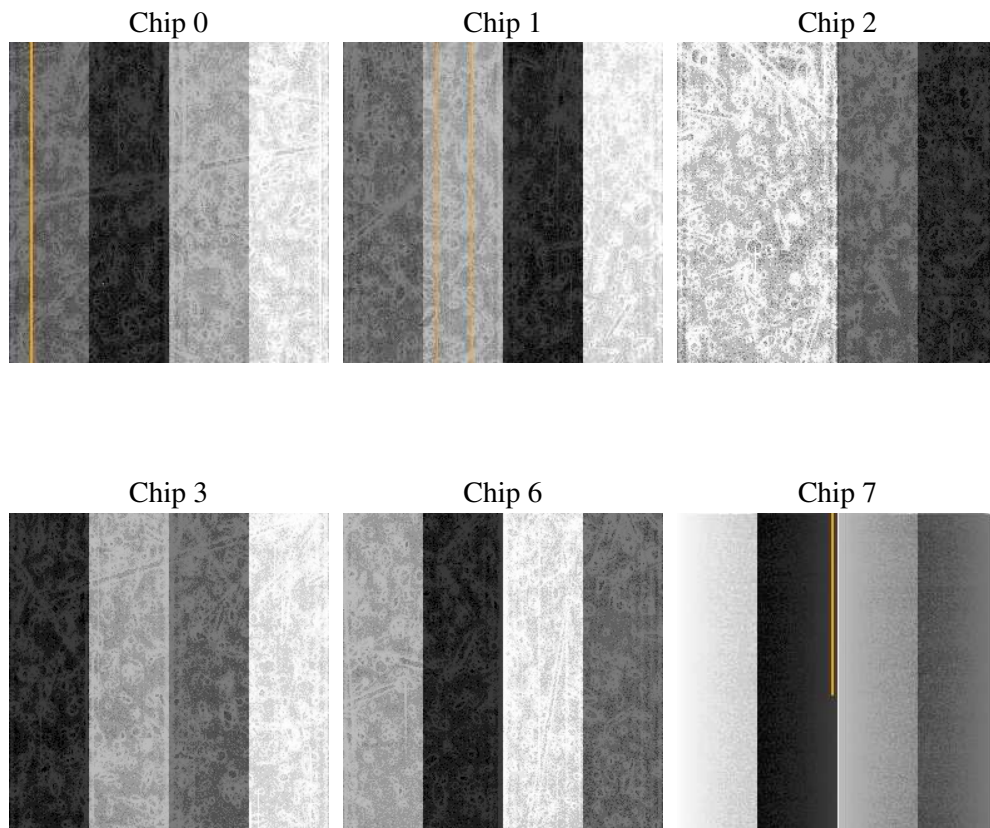
2 OBI

2.1 OBI

2.1.1 Images



2.1.2 Bias



2.1.3 Parameters

obi_num	0
ascdsver	7.6.7.2
caldbver	3.2.2
date	2006-05-20T18:07:54
revision	2

sched_exp_time	0.0
ontime	8465.5019130707
ontime0	6251.918861419
ontime1	6433.4132866561
ontime2	5986.1586006284
ontime3	6203.3038881719
ontime6	6595.4617111981
ontime7	8465.5019130707
l1events	1533919

2.1.4 Events

	ccd 0	ccd 1	ccd 2	ccd 3	ccd 6	ccd 7
level 1 events	233726	240697	228561	237870	258125	334940
rejected events	41614	42790	42973	44452	46387	61241
rejected %	17%	17%	18%	18%	17%	18%

	ccd 0	ccd 1	ccd 2	ccd 3	ccd 6	ccd 7
grade 0 events	105747	108607	103986	108527	115084	47778
	45%	45%	45%	45%	44%	14%
grade 1 events	635	547	678	665	610	129
	0%	0%	0%	0%	0%	0%
grade 2 events	33906	35013	31276	33061	36626	82540
	14%	14%	13%	13%	14%	24%
grade 3 events	12613	12760	12181	12599	13204	19777
	5%	5%	5%	5%	5%	5%
grade 4 events	12290	12682	12182	12816	13268	19438
	5%	5%	5%	5%	5%	5%
grade 5 events	2741	2903	2545	2976	3241	7454
	1%	1%	1%	1%	1%	2%
grade 6 events	27668	28973	26057	26513	33660	104274
	11%	12%	11%	11%	13%	31%
grade 7 events	38126	39212	39656	40713	42432	53550
	16%	16%	17%	17%	16%	15%

2.2 Compared Parameters

Parameter	Planned	Actual	Parameter	Planned	Actual
Instrument	ACIS	ACIS	Obspar format version number	6	6
Detector	ACIS-012367	ACIS-012367	Obspar file type	PREDICTED	ACTUAL
Grating	NONE	NONE	Obspar update status	NONE	UPDATED
Data mode	FAINT	FAINT	On-chip summing requested	N	N
Observation mode	SECONDARY	SECONDARY	Subarray requested	NONE	NONE
Pointing RA	0	227.6713703823871	Alternating exposures requested	N	N
Pointing Dec	0	-7.703188087578481	Primary exposure time	0.000000	3.2
Pointing Roll	0.0	153.4444720086886			
SIM focus pos (mm)	-0.782348	-0.7809083437167272			
SIM defocus (mm)	0	0.7524282956875696			
SIM translation stage pos (mm)	-233.592463	250.466033080201			
SIM translation stage offset (mm)	0	-0.01005468664627074			
Observation start time	200162021.461369	200162020.43637			
Observation start date	2004-05-05T16:33:41	2004-05-05T16:33:40			
Observation end time	200184321.362353	200184320.33735			
Observation end date	2004-05-05T22:45:21	2004-05-05T22:45:20			
Read mode	TIMED	TIMED			

2.3 Aspect

2.4 Star Slots

2.5 FID Slots

A Summary

A.1 Status

V&V Scientist	Beth Sundheim
V&V Date (YYYY-MM-DD)	2006.05.22
V&V Edition	1
V&V Disposition and Status	OK
V&V Charge Time	8.46297554

A.2 Comments