

V&V Reference Report

L2 ASCDS Version : 8.4.5

Observation 60235 - L2 Version 3
Chandra X-Ray Center

L2 Processing Date : Dec 1 2012

Contents

1	Front	2
2	OBI	3
2.1	OBI	3
2.1.1	Images	3
2.1.2	Bias	3
2.1.3	Parameters	4
2.1.4	Events	4
2.2	Compared Parameters	5
2.3	Star Slots	6
2.4	FID Slots	6
A	Summary	7
A.1	Status	7
A.2	Comments	7

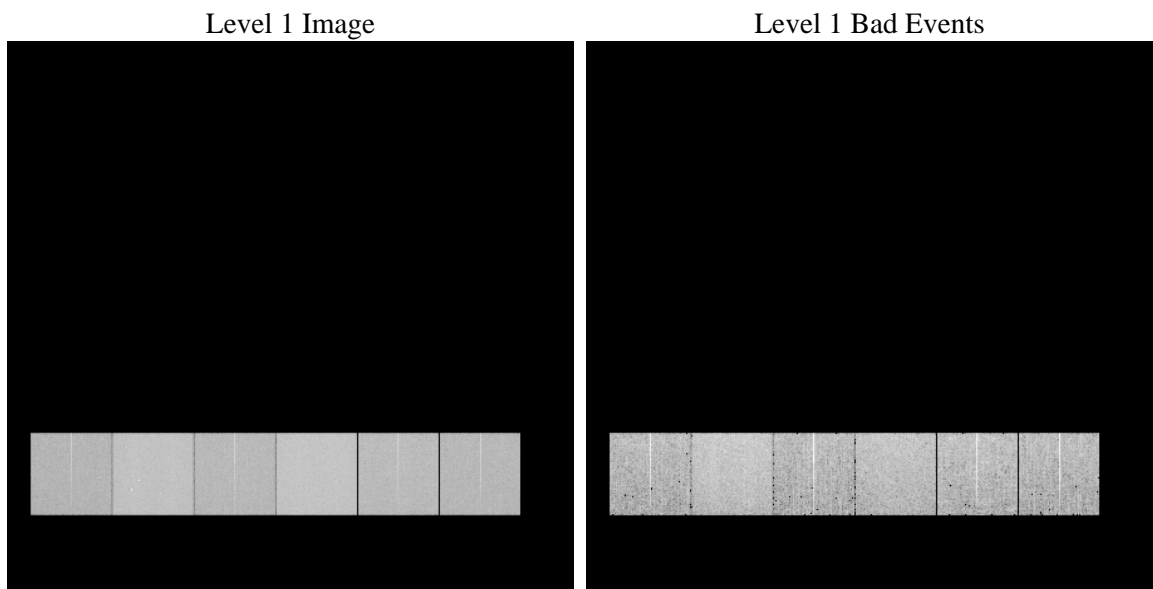
1 Front

seq_num	 	Sequence number
obs_id	60235	Observation id
title	ACIS-456789 diagnostics	Proposal title
observer	CHANDRA engineering request/realtime commanding	Principal investig
object	 	Source name
dtcycle	0	
cycle	P	events from which exps? Prim/Second/Both
ra_targ	0.0	Observer's specified target RA [deg]
dec_targ	0.0	Observer's specified target Dec [deg]
ra_nom	144.01065031387	Nominal RA [deg]
dec_nom	-32.027186829277	Nominal Dec [deg]
roll_nom	255.66697004457	Nominal Roll [deg]
revision	3	Processing version of data
ontime	8457.599968493	Sum of GTIs [s]
livetime	8350.5047451366	Livetime [s]
ontime4	5310.6177379191	Sum of GTIs [s]
ontime5	8457.599968493	Sum of GTIs [s]
ontime6	5755.4130853415	Sum of GTIs [s]
ontime7	8457.599968493	Sum of GTIs [s]
ontime8	6001.8090536892	Sum of GTIs [s]
ontime9	5696.9525592625	Sum of GTIs [s]
l2events	1178634	Number of level 2 events

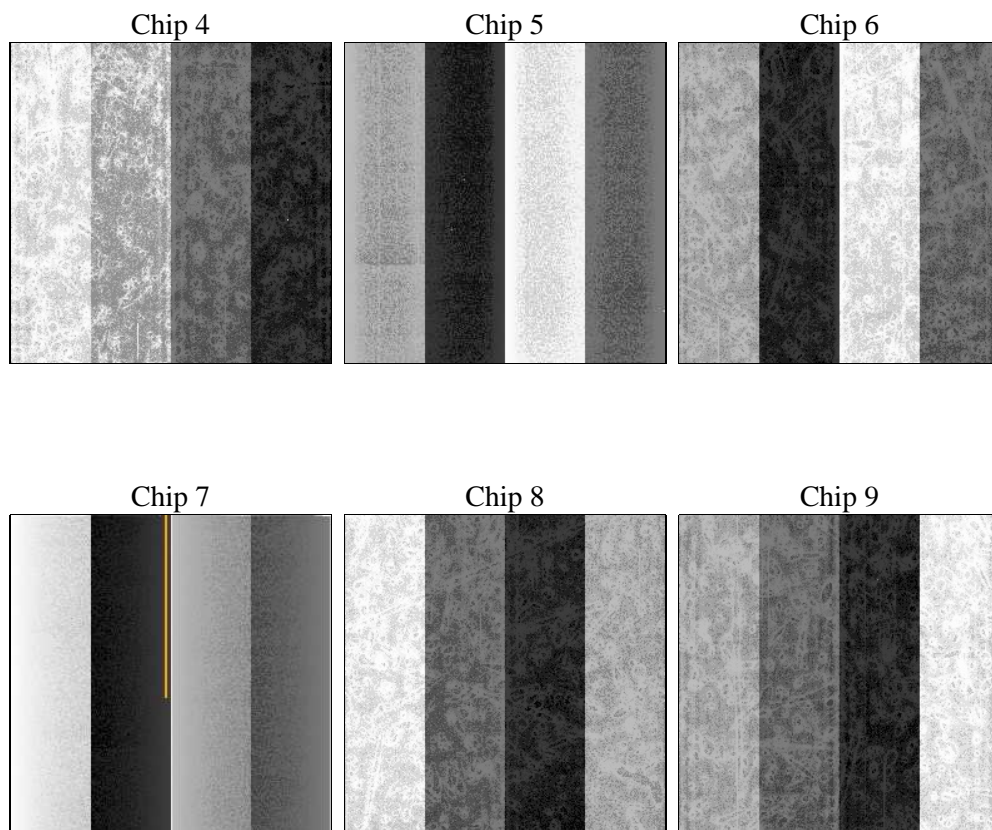
2 OBI

2.1 OBI

2.1.1 Images



2.1.2 Bias



2.1.3 Parameters

obi_num	0	Obi number	sched_exp_time	0.0	[s] Scheduled observation exposure time
ascdsver	8.4.5	Processing system revision	ontime	8457.599968493	Sum of GTIs [s]
caldsver	4.5.2	 	ontime4	5310.6177379191	Sum of GTIs [s]
date	2012-12-01T10:20:25	Date and time of file creation	ontime5	8457.599968493	Sum of GTIs [s]
revision	3	Processing version of data	ontime6	5755.4130853415	Sum of GTIs [s]
			ontime7	8457.599968493	Sum of GTIs [s]
			ontime8	6001.8090536892	Sum of GTIs [s]
			ontime9	5696.9525592625	Sum of GTIs [s]
			l1events	1530975	Number of level 1 events

2.1.4 Events

	ccd 4	ccd 5	ccd 6	ccd 7	ccd 8	ccd 9		ccd 4	ccd 5	ccd 6	ccd 7	ccd 8	ccd 9
level 1 events	198309	309538	226140	333145	246644	217199	grade 0 events	91779	49747	100147	68033	108525	96865
rejected events	41206	60683	42710	50632	48322	42420		46%	16%	44%	20%	44%	44%
rejected %	20%	19%	18%	15%	19%	19%	grade 1 events	691	226	536	180	533	578
								0%	0%	0%	0%	0%	0%
							grade 2 events	24292	94869	31474	62266	34493	29636
								12%	30%	13%	18%	13%	13%
							grade 3 events	10358	13479	11423	27967	13087	11147
								5%	4%	5%	8%	5%	5%
							grade 4 events	10668	13323	11261	27796	12892	11291
								5%	4%	4%	8%	5%	5%
							grade 5 events	2472	9295	2804	9130	3493	2901
								1%	3%	1%	2%	1%	1%
							grade 6 events	20006	77437	29125	96451	29325	25840
								10%	25%	12%	28%	11%	11%
							grade 7 events	38043	51162	39370	41322	44296	38941
								19%	16%	17%	12%	17%	17%

2.2 Compared Parameters

Parameter	Planned	Actual	Parameter	Planned	Actual
Instrument	ACIS	ACIS	Obspar format version number	7	7
Detector	ACIS-456789	ACIS-456789	Obspar file type	PREDICTED	ACTUAL
Grating	NONE	NONE	Obspar update status	NONE	UPDATED
Data mode	FAINT	FAINT	On-chip summing requested	N	N
Observation mode	SECONDARY	SECONDARY	Subarray requested	NONE	NONE
[deg] Pointing RA	0	144.0106503138711	Alternating exposures requested	N	N
[deg] Pointing Dec	0	-32.02718682927718	[s] Primary exposure time	0.000000	3.2
[deg] Pointing Roll	0.0	255.6669700445657			
[mm] SIM focus pos	-0.684267	-0.6828225247311905			
[mm] SIM defocus	0	0.8505141146731063			
[mm] SIM translation stage pos	-190.132523	250.466033080201			
[mm] SIM translation stage offset	0	-0.01005468664627074			
[s] Observation start time (MET)	200847646.041608	200847645.01662			
Observation start date	2004-05-13T15:00:46	2004-05-13T15:00:45			
[s] Observation end time (MET)	200870193.992603	200870192.96761			
Observation end date	2004-05-13T21:16:34	2004-05-13T21:16:32			
Read mode	TIMED	TIMED			

2.3 Star Slots

2.4 FID Slots

A Summary

A.1 Status

V&V Scientist	Beth Sundheim
V&V Date (YYYY-MM-DD)	2012.12.12
V&V Edition	1
V&V Disposition and Status	OK
V&V Charge Time	8.457599968493

A.2 Comments