

# V&V Reference Report

## L2 ASCDS Version : 7.6.7.2

Observation 60235 - L2 Version 001  
Chandra X-Ray Center

L2 Processing Date : May 18 2006

## Contents

<b>1</b>	<b>Front</b>	<b>2</b>
<b>2</b>	<b>OBI</b>	<b>3</b>
2.1	OBI . . . . .	3
2.1.1	Images . . . . .	3
2.1.2	Bias . . . . .	3
2.1.3	Parameters . . . . .	4
2.1.4	Events . . . . .	4
2.2	Compared Parameters . . . . .	5
2.3	Aspect . . . . .	6
2.4	Star Slots . . . . .	8
2.5	FID Slots . . . . .	8
<b>A</b>	<b>Summary</b>	<b>9</b>
A.1	Status . . . . .	9
A.2	Comments . . . . .	9

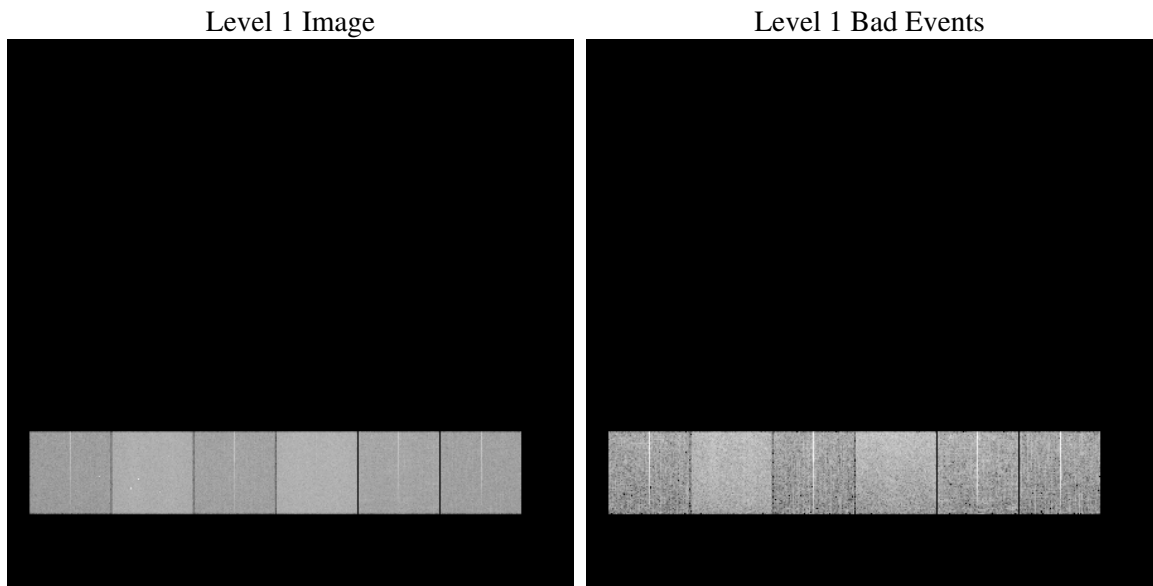
# 1 Front

seq_num	&#160
obs_id	60235
title	ACIS-456789 diagnostics
observer	CHANDRA engineering request/realtime commanding
object	&#160
dtcycle	0
cycle	P
ra_targ	0.0
dec_targ	0.0
ra_nom	144.01065846231
dec_nom	-32.027159924233
roll_nom	255.66697435832
revision	2
ontime	8456.6988042593
livetime	8349.6149919871
ontime4	5309.8396936953
ontime5	8456.7398442626
ontime6	5753.8130853474
ontime7	8456.6988042593
ontime8	6000.2090536952
ontime9	5695.3525592685
l2events	1160291

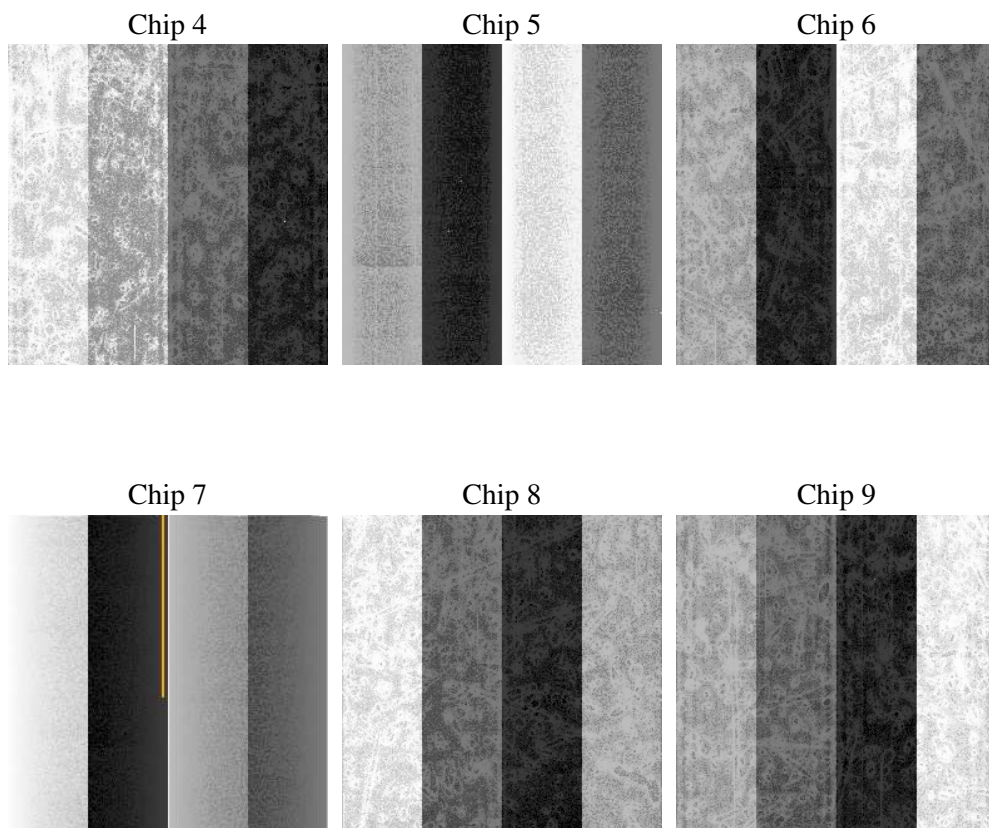
## 2 OBI

### 2.1 OBI

#### 2.1.1 Images



#### 2.1.2 Bias



### 2.1.3 Parameters

obi_num	0
ascdsver	7.6.7.2
caldsver	3.2.2
date	2006-05-18T04:44:55
revision	2

sched_exp_time	0.0
ontime	8459.0147033632
ontime4	5312.0324727893
ontime5	8459.0147033632
ontime6	5756.0469044447
ontime7	8459.0147033632
ontime8	6002.3607928157
ontime9	5697.7094983757
l1events	1530975

### 2.1.4 Events

	ccd 4	ccd 5	ccd 6	ccd 7	ccd 8	ccd 9
level 1 events	198309	309538	226140	333145	246644	217199
rejected events	41309	67089	42832	62611	48430	42549
rejected %	20%	21%	18%	18%	19%	19%

	ccd 4	ccd 5	ccd 6	ccd 7	ccd 8	ccd 9
grade 0 events	91711	24773	99965	45238	108434	96785
	46%	8%	44%	13%	43%	44%
grade 1 events	675	105	530	110	524	574
	0%	0%	0%	0%	0%	0%
grade 2 events	24360	115046	31656	83369	34584	29716
	12%	37%	13%	25%	14%	13%
grade 3 events	10330	7147	11368	18943	13059	11115
	5%	2%	5%	5%	5%	5%
grade 4 events	10639	7043	11217	18584	12861	11263
	5%	2%	4%	5%	5%	5%
grade 5 events	2483	6514	2797	7353	3486	2895
	1%	2%	1%	2%	1%	1%
grade 6 events	20052	88526	29201	104499	29376	25885
	10%	28%	12%	31%	11%	11%
grade 7 events	38059	60384	39406	55049	44320	38966
	19%	19%	17%	16%	17%	17%

## 2.2 Compared Parameters

Parameter	Planned	Actual	Parameter	Planned	Actual
Instrument	ACIS	ACIS	Obspar format version number	6	6
Detector	ACIS-456789	ACIS-456789	Obspar file type	PREDICTED	ACTUAL
Grating	NONE	NONE	Obspar update status	NONE	UPDATED
Data mode	FAINT	FAINT	On-chip summing requested	N	N
Observation mode	SECONDARY	SECONDARY	Subarray requested	NONE	NONE
Pointing RA	0	144.0106584623115	Alternating exposures requested	N	N
Pointing Dec	0	-32.02715992423303	Primary exposure time	0.000000	3.2
Pointing Roll	0.0	255.6669743583188			
SIM focus pos (mm)	-0.684267	-0.6828225247311905			
SIM defocus (mm)	0	0.8505141146731063			
SIM translation stage pos (mm)	-190.132523	250.466033080201			
SIM translation stage offset (mm)	0	-0.01005468664627074			
Observation start time	200847646.041608	200847645.01662			
Observation start date	2004-05-13T15:00:46	2004-05-13T15:00:45			
Observation end time	200870193.992603	200870192.96761			
Observation end date	2004-05-13T21:16:34	2004-05-13T21:16:32			
Read mode	TIMED	TIMED			

## 2.3 Aspect



## **2.4 Star Slots**

## **2.5 FID Slots**



# A Summary

## A.1 Status

V&V Scientist	Jen Lauer
V&V Date (YYYY-MM-DD)	2006.05.18
V&V Edition	1
V&V Disposition and Status	OK
V&V Charge Time	8.4566988

## A.2 Comments

The ACIS focal plane temperature was above calibration limits for the first 4 ksec of the observation, and dropped by more than a degree over the course of the observation.