

V&V Reference Report

L2 ASCDS Version : 7.6.7.2

Observation 60232 - L2 Version 001
Chandra X-Ray Center

L2 Processing Date : May 18 2006

Contents

1	Front	2
2	OBI	3
2.1	OBI	3
2.1.1	Images	3
2.1.2	Bias	3
2.1.3	Parameters	4
2.1.4	Events	4
2.2	Compared Parameters	5
2.3	Aspect	6
2.4	Star Slots	8
2.5	FID Slots	8
A	Summary	9
A.1	Status	9
A.2	Comments	9

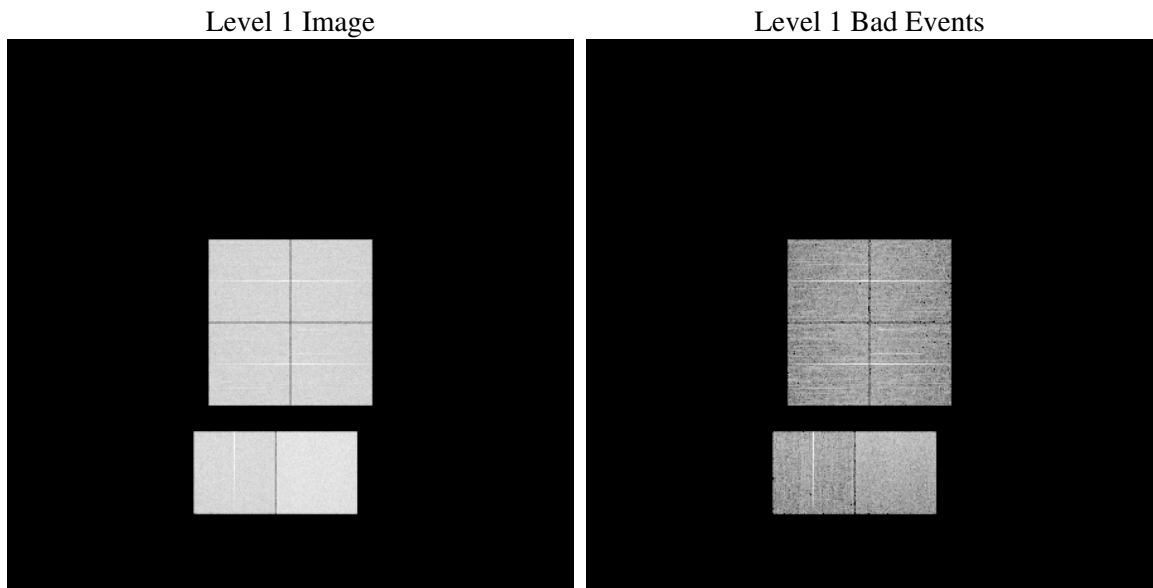
1 Front

seq_num	
obs_id	60232
title	ACIS-012367 diagnostics
observer	CHANDRA engineering request/realtime commanding
object	
dtcycle	0
cycle	P
ra_targ	0.0
dec_targ	0.0
ra_nom	144.00944340637
dec_nom	-32.027427989307
roll_nom	253.2295243079
revision	2
ontime	8387.1999687552
livetime	8280.9961925854
ontime0	6189.1149969399
ontime1	6325.2769171
ontime2	5942.8833768368
ontime3	6101.5267785788
ontime6	6591.7043530643
ontime7	8387.1999687552
l2events	1174282

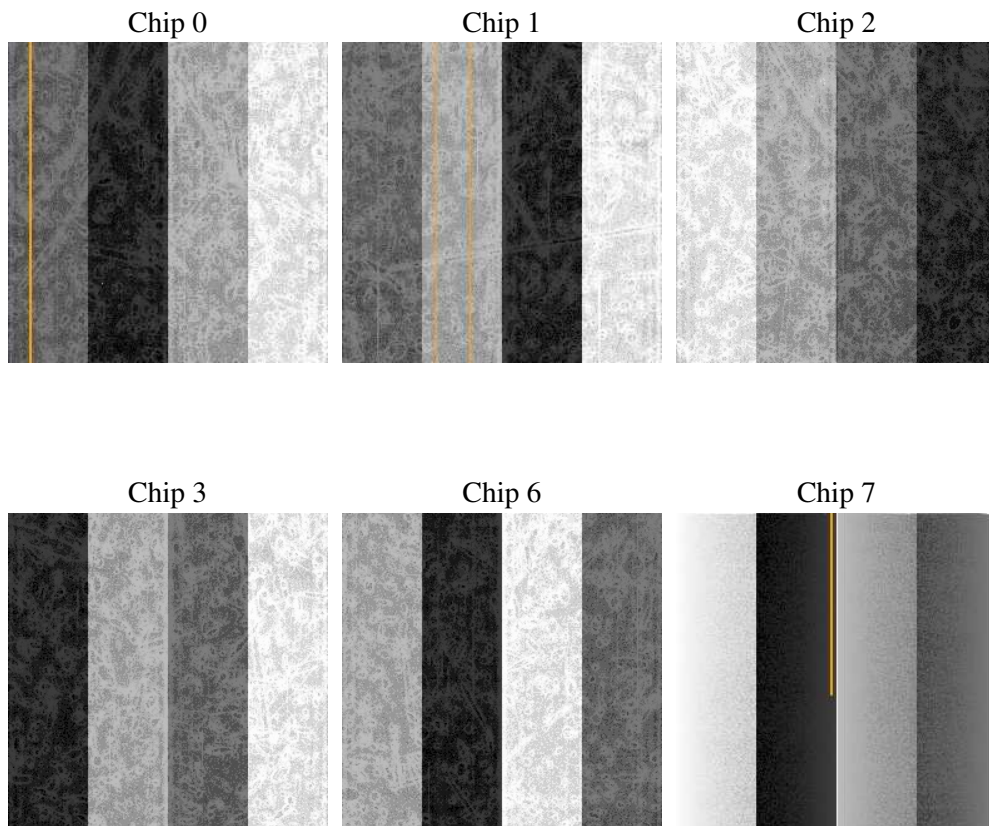
2 OBI

2.1 OBI

2.1.1 Images



2.1.2 Bias



2.1.3 Parameters

obi_num	0
ascdsver	7.6.7.2
caldbver	3.2.2
date	2006-05-18T07:01:57
revision	2

sched_exp_time	0.0
ontime	8462.2551935613
ontime0	6242.1926032305
ontime1	6378.313513279
ontime2	5992.6379627585
ontime3	6151.4455843866
ontime6	6650.5547963381
ontime7	8462.2551935613
l1events	1532747

2.1.4 Events

	ccd 0	ccd 1	ccd 2	ccd 3	ccd 6	ccd 7
level 1 events	234026	236689	230864	236635	261110	333423
rejected events	44599	44795	47260	47917	50638	65347
rejected %	19%	18%	20%	20%	19%	19%

	ccd 0	ccd 1	ccd 2	ccd 3	ccd 6	ccd 7
grade 0 events	105348	105852	103820	106627	114901	45459
	45%	44%	44%	45%	44%	13%
grade 1 events	608	516	657	650	585	126
	0%	0%	0%	0%	0%	0%
grade 2 events	33464	34374	30944	32263	36876	82989
	14%	14%	13%	13%	14%	24%
grade 3 events	12243	12290	12164	12462	13116	18901
	5%	5%	5%	5%	5%	5%
grade 4 events	12234	12423	12210	12506	13317	18681
	5%	5%	5%	5%	5%	5%
grade 5 events	2834	2883	2546	2930	3217	7386
	1%	1%	1%	1%	1%	2%
grade 6 events	27694	28585	25996	26296	34092	104425
	11%	12%	11%	11%	13%	31%
grade 7 events	39601	39766	42527	42901	45006	55456
	16%	16%	18%	18%	17%	16%

2.2 Compared Parameters

Parameter	Planned	Actual	Parameter	Planned	Actual
Instrument	ACIS	ACIS	Obspar format version number	6	6
Detector	ACIS-012367	ACIS-012367	Obspar file type	PREDICTED	ACTUAL
Grating	NONE	NONE	Obspar update status	NONE	UPDATED
Data mode	FAINT	FAINT	On-chip summing requested	N	N
Observation mode	SECONDARY	SECONDARY	Subarray requested	NONE	NONE
Pointing RA	0	144.0094434063696	Alternating exposures requested	N	N
Pointing Dec	0	-32.02742798930685	Primary exposure time	0.000000	3.2
Pointing Roll	0.0	253.2295243079			
SIM focus pos (mm)	-0.782348	-0.7809083437167272			
SIM defocus (mm)	0	0.7524282956875696			
SIM translation stage pos (mm)	-233.592463	250.466033080201			
SIM translation stage offset (mm)	0	-0.01005468664627074			
Observation start time	201079337.051835	201079336.02685			
Observation start date	2004-05-16T07:22:17	2004-05-16T07:22:16			
Observation end time	201101659.50282	201101658.47784			
Observation end date	2004-05-16T13:34:20	2004-05-16T13:34:18			
Read mode	TIMED	TIMED			

2.3 Aspect

2.4 Star Slots

2.5 FID Slots

A Summary

A.1 Status

V&V Scientist	Jen Lauer
V&V Date (YYYY-MM-DD)	2006.05.18
V&V Edition	1
V&V Disposition and Status	OK
V&V Charge Time	8.38719996

A.2 Comments

The ACIS focal plane temperature is above calibration limits for the first three ksec of the observation, and drops by more than a degree over the course of the observation.