

V&V Reference Report

L2 ASCDS Version : 8.4.5

Observation 60209 - L2 Version 3
Chandra X-Ray Center

L2 Processing Date : Dec 2 2012

Contents

| | | |
|----------|-------------------------------|----------|
| 1 | Front | 2 |
| 2 | OBI | 3 |
| 2.1 | OBI | 3 |
| 2.1.1 | Images | 3 |
| 2.1.2 | Bias | 3 |
| 2.1.3 | Parameters | 4 |
| 2.1.4 | Events | 4 |
| 2.2 | Compared Parameters | 5 |
| 2.3 | Star Slots | 6 |
| 2.4 | FID Slots | 6 |
| A | Summary | 7 |
| A.1 | Status | 7 |
| A.2 | Comments | 7 |

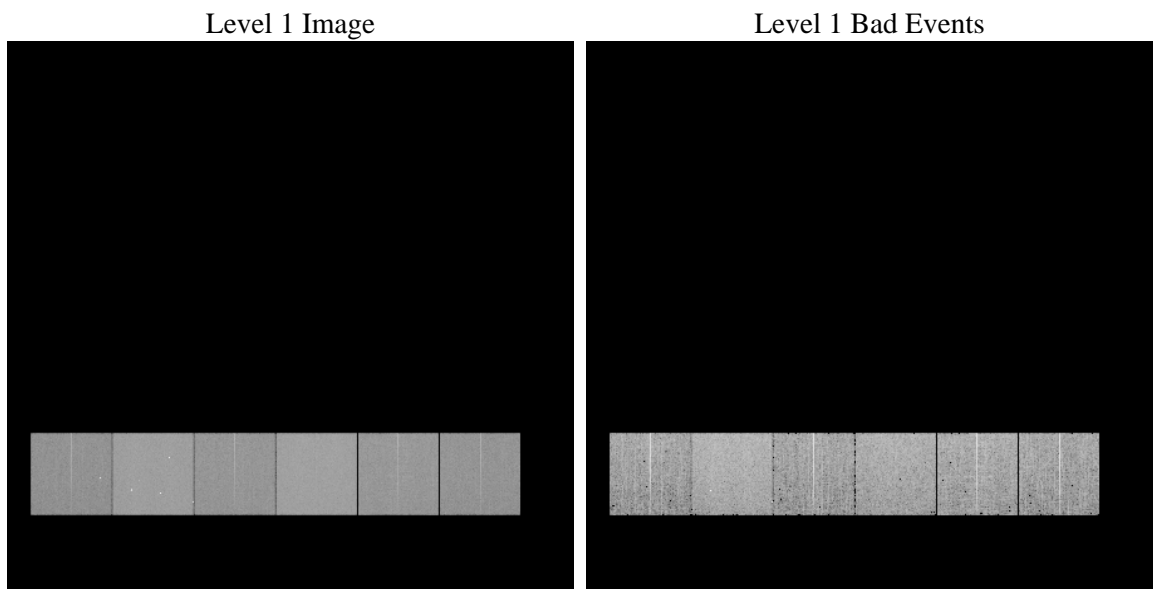
1 Front

| | | |
|----------|---|---|
| seq_num | | Sequence number |
| obs_id | 60209 | Observation id |
| title | ACIS-456789 diagnostics | Proposal title |
| observer | CHANDRA engineering request/realtime commanding | Principal investig |
| object | | Source name |
| dtcycle | 0 | |
| cycle | P | events from which exps? Prim/Second/Both |
| ra_targ | 0.0 | Observer's specified target RA [deg] |
| dec_targ | 0.0 | Observer's specified target Dec [deg] |
| ra_nom | 303.97083340146 | Nominal RA [deg] |
| dec_nom | 22.009349614576 | Nominal Dec [deg] |
| roll_nom | 128.07360374968 | Nominal Roll [deg] |
| revision | 3 | Processing version of data |
| ontime | 8271.9999691844 | Sum of GTIs [s] |
| livetime | 8167.2549247742 | Livetime [s] |
| ontime4 | 5179.1513488591 | Sum of GTIs [s] |
| ontime5 | 8271.9909608662 | Sum of GTIs [s] |
| ontime6 | 5733.3590596318 | Sum of GTIs [s] |
| ontime7 | 8271.9999691844 | Sum of GTIs [s] |
| ontime8 | 5909.200371325 | Sum of GTIs [s] |
| ontime9 | 5451.3208667934 | Sum of GTIs [s] |
| l2events | 1141901 | Number of level 2 events |

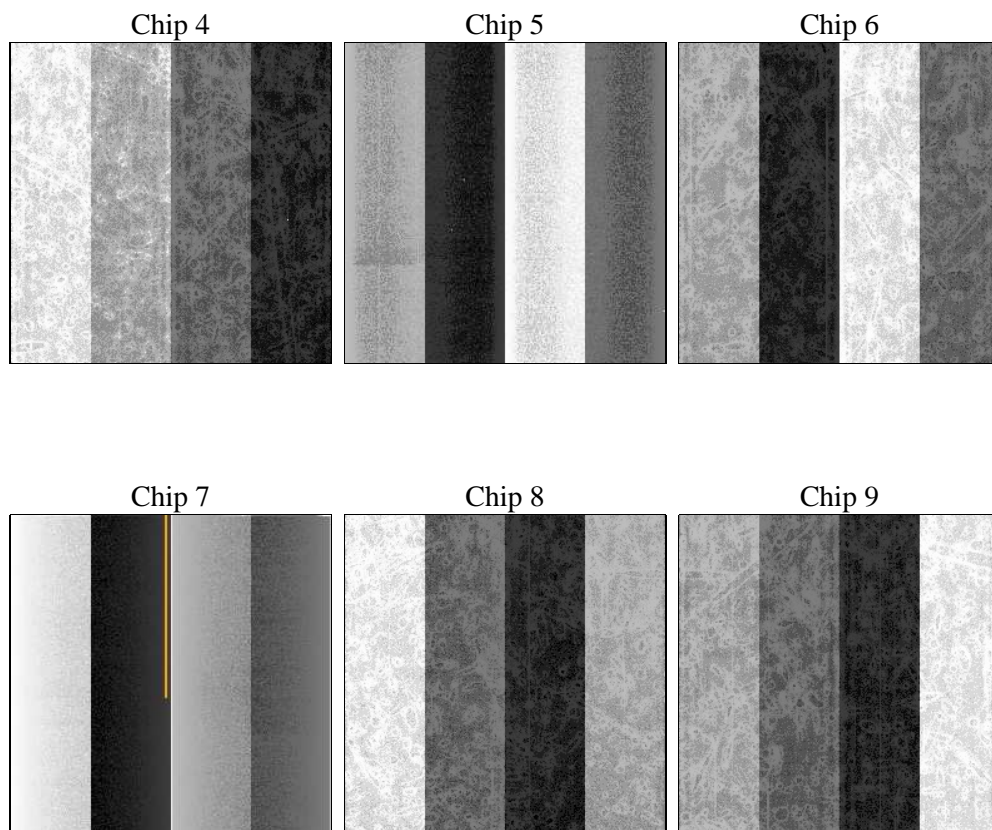
2 OBI

2.1 OBI

2.1.1 Images



2.1.2 Bias



2.1.3 Parameters

| | | | | | |
|----------|---------------------|--------------------------------|----------------|-----------------|---|
| obi_num | 0 | Obi number | sched_exp_time | 0.0 | [s] Scheduled observation exposure time |
| ascdsver | 8.4.5 | Processing system revision | ontime | 8271.9999691844 | Sum of GTIs [s] |
| caldsver | 4.5.2 | | ontime4 | 5179.1513488591 | Sum of GTIs [s] |
| date | 2012-12-03T01:19:06 | Date and time of file creation | ontime5 | 8271.9909608662 | Sum of GTIs [s] |
| revision | 3 | Processing version of data | ontime6 | 5733.3590596318 | Sum of GTIs [s] |
| | | | ontime7 | 8271.9999691844 | Sum of GTIs [s] |
| | | | ontime8 | 5909.200371325 | Sum of GTIs [s] |
| | | | ontime9 | 5451.3208667934 | Sum of GTIs [s] |
| | | | l1events | 1498648 | Number of level 1 events |

2.1.4 Events

| | ccd 4 | ccd 5 | ccd 6 | ccd 7 | ccd 8 | ccd 9 | | ccd 4 | ccd 5 | ccd 6 | ccd 7 | ccd 8 | ccd 9 |
|-----------------|--------|--------|--------|--------|--------|--------|----------------|-------|-------|-------|-------|--------|-------|
| level 1 events | 194390 | 306717 | 223658 | 323778 | 240702 | 209403 | grade 0 events | 89618 | 54310 | 98369 | 66215 | 104013 | 91536 |
| rejected events | 41441 | 59985 | 42250 | 50405 | 50070 | 43267 | | 46% | 17% | 43% | 20% | 43% | 43% |
| rejected % | 21% | 19% | 18% | 15% | 20% | 20% | grade 1 events | 714 | 301 | 482 | 199 | 601 | 581 |
| | | | | | | | | 0% | 0% | 0% | 0% | 0% | 0% |
| | | | | | | | grade 2 events | 23638 | 90429 | 31440 | 60083 | 33529 | 28345 |
| | | | | | | | | 12% | 29% | 14% | 18% | 13% | 13% |
| | | | | | | | grade 3 events | 10150 | 13778 | 11546 | 26906 | 12301 | 10649 |
| | | | | | | | | 5% | 4% | 5% | 8% | 5% | 5% |
| | | | | | | | grade 4 events | 10013 | 13616 | 11423 | 27390 | 12549 | 10808 |
| | | | | | | | | 5% | 4% | 5% | 8% | 5% | 5% |
| | | | | | | | grade 5 events | 2547 | 9451 | 2824 | 9129 | 3542 | 2997 |
| | | | | | | | | 1% | 3% | 1% | 2% | 1% | 1% |
| | | | | | | | grade 6 events | 19530 | 74786 | 28720 | 92964 | 28477 | 24896 |
| | | | | | | | | 10% | 24% | 12% | 28% | 11% | 11% |
| | | | | | | | grade 7 events | 38180 | 50046 | 38854 | 40892 | 45690 | 39591 |
| | | | | | | | | 19% | 16% | 17% | 12% | 18% | 18% |

2.2 Compared Parameters

| Parameter | Planned | Actual |
|-----------------------------------|---------------------|----------------------|
| Instrument | ACIS | ACIS |
| Detector | ACIS-456789 | ACIS-456789 |
| Grating | NONE | NONE |
| Data mode | FAINT | FAINT |
| Observation mode | SECONDARY | SECONDARY |
| [deg] Pointing RA | 0 | 303.9708334014587 |
| [deg] Pointing Dec | 0 | 22.00934961457584 |
| [deg] Pointing Roll | 0.0 | 128.0736037496779 |
| [mm] SIM focus pos | -0.684267 | -0.6828225247311905 |
| [mm] SIM defocus | 0 | 0.8505141146731063 |
| [mm] SIM translation stage pos | -190.132523 | 250.466033080201 |
| [mm] SIM translation stage offset | 0 | -0.01005468664627074 |
| [s] Observation start time (MET) | 202685879.0728 | 202685878.0478 |
| Observation start date | 2004-06-03T21:37:59 | 2004-06-03T21:37:58 |
| [s] Observation end time (MET) | 202696389.423264 | 202696388.39826 |
| Observation end date | 2004-06-04T00:33:09 | 2004-06-04T00:33:08 |
| Read mode | TIMED | TIMED |

| Parameter | Planned | Actual |
|---------------------------------|-----------|---------|
| Obspar format version number | 7 | 7 |
| Obspar file type | PREDICTED | ACTUAL |
| Obspar update status | NONE | UPDATED |
| On-chip summing requested | N | N |
| Subarray requested | NONE | NONE |
| Alternating exposures requested | N | N |
| [s] Primary exposure time | 0.000000 | 3.2 |

2.3 Star Slots

2.4 FID Slots

A Summary

A.1 Status

| | |
|----------------------------|-----------------|
| V&V Scientist | Jen Lauer |
| V&V Date (YYYY-MM-DD) | 2012.12.17 |
| V&V Edition | 1 |
| V&V Disposition and Status | OK |
| V&V Charge Time | 8.2719999691844 |

A.2 Comments