

V&V Reference Report

L2 ASCDS Version : 7.6.7.2

Observation 60208 - L2 Version 001
Chandra X-Ray Center

L2 Processing Date : May 1 2006

Contents

1	Front	2
2	OBI	3
2.1	OBI	3
2.1.1	Images	3
2.1.2	Bias	3
2.1.3	Parameters	4
2.1.4	Events	4
2.2	Compared Parameters	5
2.3	Aspect	6
2.4	Star Slots	8
2.5	FID Slots	8
A	Summary	9
A.1	Status	9
A.2	Comments	9

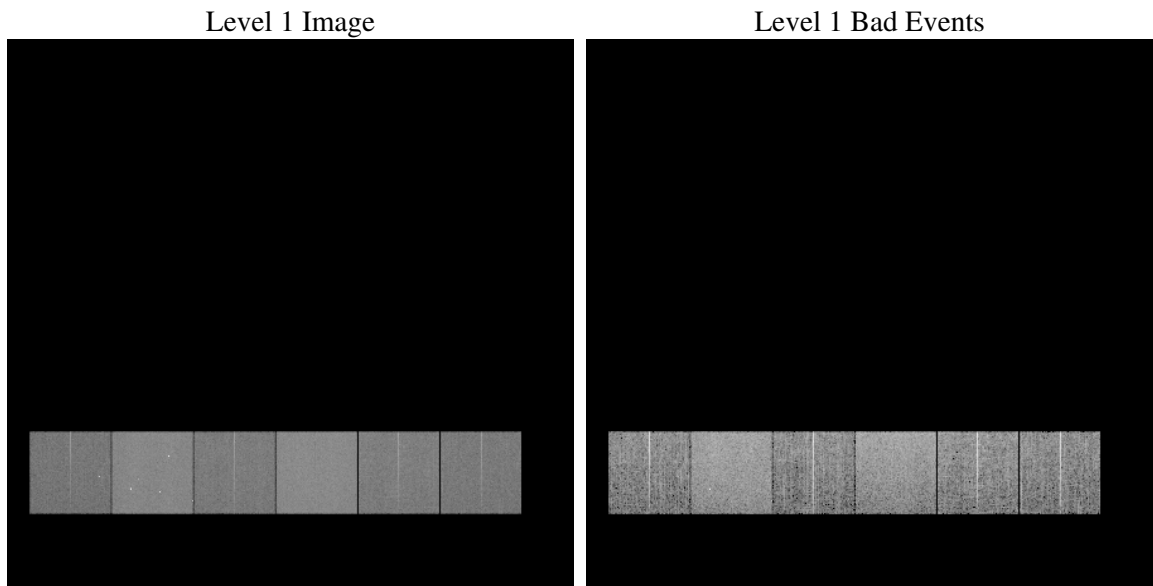
1 Front

seq_num	
obs_id	60208
title	ACIS-456789 diagnostics
observer	CHANDRA engineering request/realtime commanding
object	
dtcycle	0
cycle	P
ra_targ	0.0
dec_targ	0.0
ra_nom	220.04303475677
dec_nom	-52.010780268582
roll_nom	305.00991650828
revision	2
ontime	7788.7179705799
livetime	7690.0925338335
ontime4	4800.8700295687
ontime5	7795.1999709606
ontime6	5332.0569813848
ontime7	7788.7179705799
ontime8	5500.9632054567
ontime9	5192.8653190136
l2events	1064547

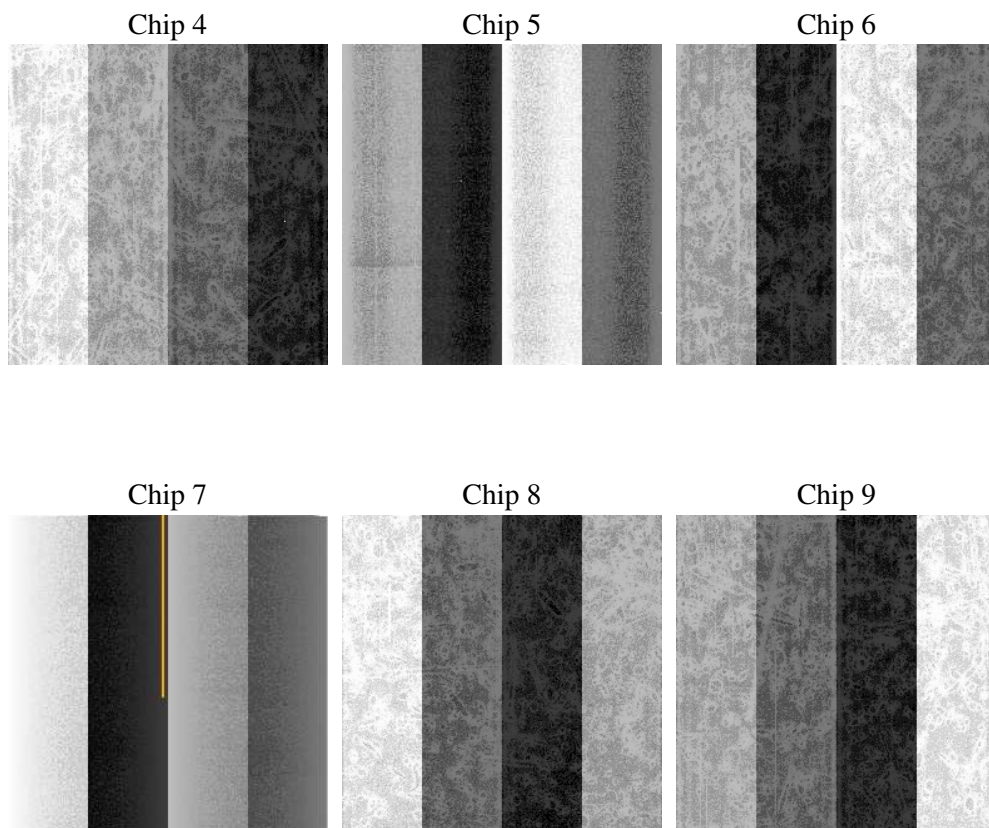
2 OBI

2.1 OBI

2.1.1 Images



2.1.2 Bias



2.1.3 Parameters

obi_num	0
ascdsver	7.6.7.2
caldsver	3.2.1
date	2006-05-01T21:05:47
revision	2

sched_exp_time	0.0
ontime	7791.3799642622
ontime4	4803.1973052323
ontime5	7797.861964643
ontime6	5334.7189750671
ontime7	7791.3799642622
ontime8	5503.2494411469
ontime9	5195.3567546904
l1events	1413463

2.1.4 Events

	ccd 4	ccd 5	ccd 6	ccd 7	ccd 8	ccd 9
level 1 events	181416	289731	210366	307983	225202	198765
rejected events	39765	61832	41142	57294	45955	39733
rejected %	21%	21%	19%	18%	20%	19%

	ccd 4	ccd 5	ccd 6	ccd 7	ccd 8	ccd 9
grade 0 events	82179	28380	91794	44965	97575	87952
	45%	9%	43%	14%	43%	44%
grade 1 events	662	263	471	115	544	479
	0%	0%	0%	0%	0%	0%
grade 2 events	22733	105786	29397	75115	31371	27320
	12%	36%	13%	24%	13%	13%
grade 3 events	9494	7262	10676	18557	11667	10247
	5%	2%	5%	6%	5%	5%
grade 4 events	9364	7140	10568	18338	11761	10163
	5%	2%	5%	5%	5%	5%
grade 5 events	2235	6242	2789	6981	3202	2788
	1%	2%	1%	2%	1%	1%
grade 6 events	17994	79435	26893	93987	26955	23456
	9%	27%	12%	30%	11%	11%
grade 7 events	36755	55223	37778	49925	42127	36360
	20%	19%	17%	16%	18%	18%

2.2 Compared Parameters

Parameter	Planned	Actual	Parameter	Planned	Actual
Instrument	ACIS	ACIS	Obspar format version number	6	6
Detector	ACIS-456789	ACIS-456789	Obspar file type	PREDICTED	ACTUAL
Grating	NONE	NONE	Obspar update status	NONE	UPDATED
Data mode	FAINT	FAINT	On-chip summing requested	N	N
Observation mode	SECONDARY	SECONDARY	Subarray requested	NONE	NONE
Pointing RA	0	220.0430347567656	Alternating exposures requested	N	N
Pointing Dec	0	-52.01078026858212	Primary exposure time	0.000000	3.2
Pointing Roll	0.0	305.0099165082821			
SIM focus pos (mm)	-0.684267	-0.7809083437167272			
SIM defocus (mm)	0	0.7524282956875696			
SIM translation stage pos (mm)	-190.132523	250.466033080201			
SIM translation stage offset (mm)	0	-0.01005468664627074			
Observation start time	202866192.980769	202866191.95577			
Observation start date	2004-06-05T23:43:13	2004-06-05T23:43:11			
Observation end time	202884138.681562	202884137.65657			
Observation end date	2004-06-06T04:42:19	2004-06-06T04:42:17			
Read mode	TIMED	TIMED			

2.3 Aspect

2.4 Star Slots

2.5 FID Slots

A Summary

A.1 Status

V&V Scientist	Jen Lauer
V&V Date (YYYY-MM-DD)	2006.05.02
V&V Edition	1
V&V Disposition and Status	OK
V&V Charge Time	7.78871797

A.2 Comments