

# V&V Reference Report

## L2 ASCDS Version : 8.4.5

Observation 60205 - L2 Version 3  
Chandra X-Ray Center

L2 Processing Date : Dec 3 2012

## Contents

<b>1</b>	<b>Front</b>	<b>2</b>
<b>2</b>	<b>OBI Primary</b>	<b>3</b>
2.1	OBI . . . . .	3
2.1.1	Images . . . . .	3
2.1.2	Bias . . . . .	3
2.1.3	Parameters . . . . .	4
2.1.4	Events . . . . .	4
2.2	Compared Parameters . . . . .	5
2.3	Star Slots . . . . .	6
2.4	FID Slots . . . . .	6
<b>3</b>	<b>OBI Secondary</b>	<b>6</b>
3.1	OBI . . . . .	6
3.1.1	Images . . . . .	6
3.1.2	Bias . . . . .	6
3.1.3	Parameters . . . . .	7
3.1.4	Events . . . . .	7
<b>A</b>	<b>Summary</b>	<b>8</b>
A.1	Status . . . . .	8
A.2	Comments . . . . .	8

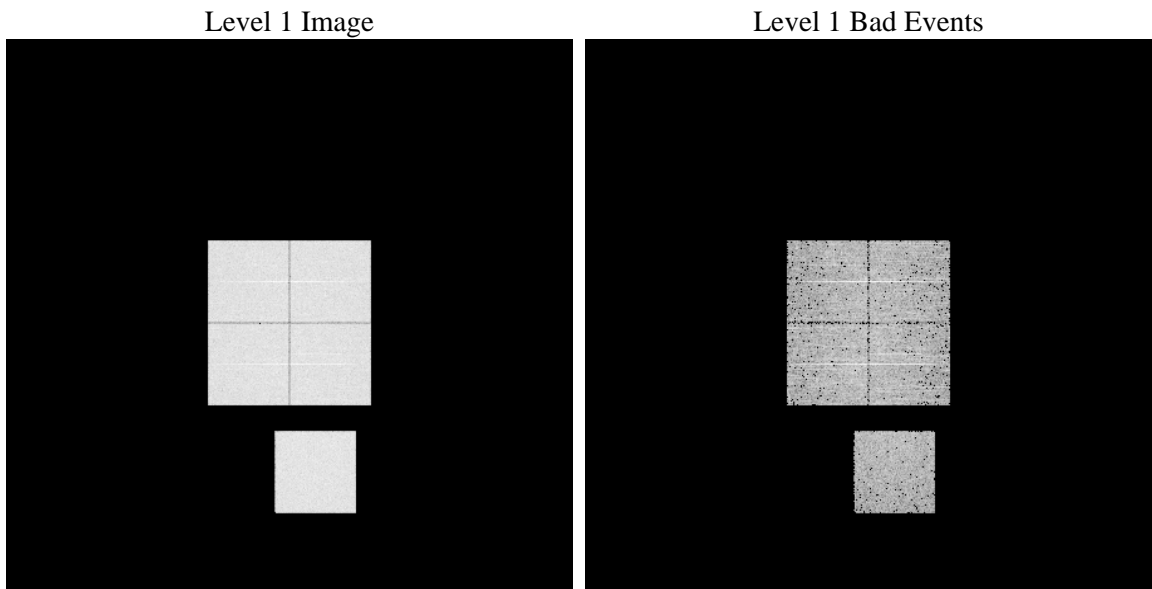
# 1 Front

seq_num	&#160	Sequence number
obs_id	60205	Observation id
title	ACIS-01237 diagnostics	Proposal title
observer	CHANDRA engineering request/realtime commanding	Principal investig
object	&#160	Source name
dtcycle	0	&#160
cycle	P	events are from which exps? P[rimary] S[econdar
ra_targ	0.0	Observer's specified target RA [deg]
dec_targ	0.0	Observer's specified target Dec [deg]
ra_nom	26.9736166195	Nominal RA [deg]
dec_nom	-12.992511875081	Nominal Dec [deg]
roll_nom	125.98260382022	Nominal Roll [deg]
revision	3	Processing version of data
ontime	3546.4461100698	Sum of GTIs [s]
livetime	3510.4291074275	Livetime [s]
ontime0	3522.19987005	Sum of GTIs [s]
ontime1	3514.1177900434	Sum of GTIs [s]
ontime2	3433.2969899774	Sum of GTIs [s]
ontime3	3461.5842700005	Sum of GTIs [s]
ontime7	3546.4461100698	Sum of GTIs [s]
l2events	510062	Number of level 2 events

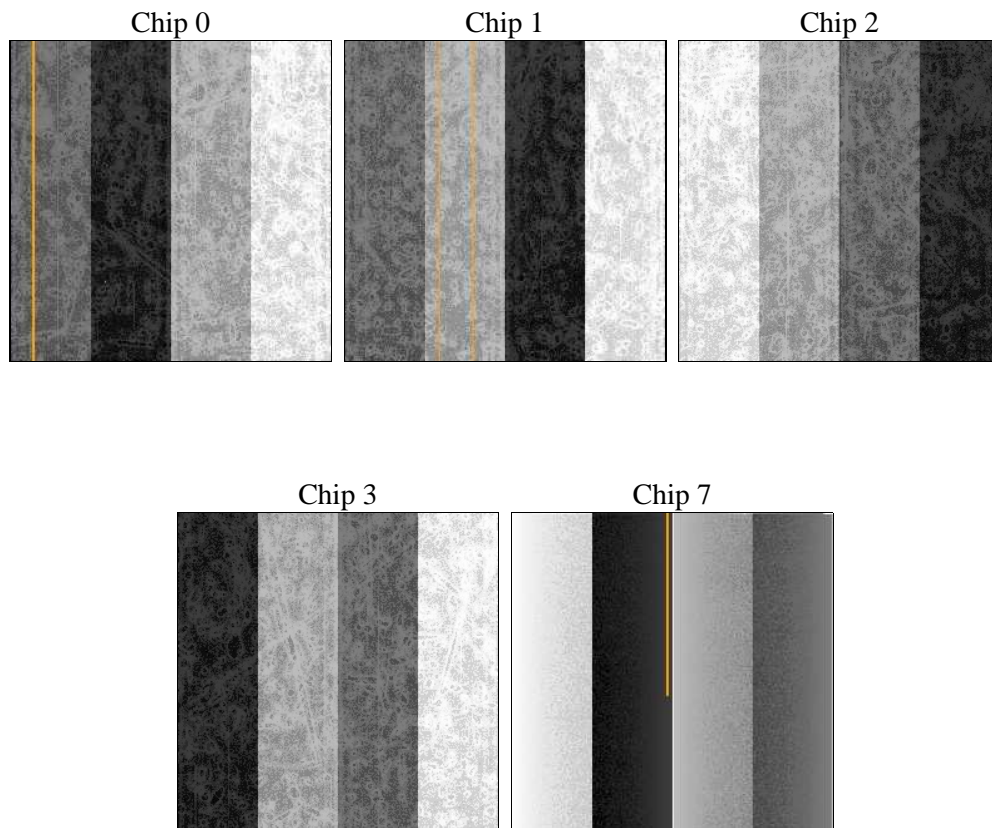
## 2 OBI Primary

### 2.1 OBI

#### 2.1.1 Images



#### 2.1.2 Bias



### 2.1.3 Parameters

obi_num	0	Obi number	sched_exp_time	0.0	[s] Scheduled observation exposure time
ascdsver	8.4.5	Processing system revision	ontime	3546.4461100698	Sum of GTIs [s]
caldsver	4.5.2	&#160	ontime0	3522.19987005	Sum of GTIs [s]
date	2012-12-03T07:04:05	Date and time of file creation	ontime1	3514.1177900434	Sum of GTIs [s]
revision	3	Processing version of data	ontime2	3433.2969899774	Sum of GTIs [s]
			ontime3	3461.5842700005	Sum of GTIs [s]
			ontime7	3546.4461100698	Sum of GTIs [s]
			l1events	649339	Number of level 1 events

### 2.1.4 Events

	ccd 0	ccd 1	ccd 2	ccd 3	ccd 7
level 1 events	126815	128109	128531	128789	137095
rejected events	21404	22912	24676	24102	19936
rejected %	16%	17%	19%	18%	14%

	ccd 0	ccd 1	ccd 2	ccd 3	ccd 7
grade 0 events	58022	57587	58048	58729	29107
	45%	44%	45%	45%	21%
grade 1 events	392	321	390	413	97
	0%	0%	0%	0%	0%
grade 2 events	18492	18768	17502	17998	25641
	14%	14%	13%	13%	18%
grade 3 events	6897	6749	6785	6777	11882
	5%	5%	5%	5%	8%
grade 4 events	6815	6823	6814	6972	11652
	5%	5%	5%	5%	8%
grade 5 events	1544	1569	1472	1590	3852
	1%	1%	1%	1%	2%
grade 6 events	15304	15387	14837	14347	39010
	12%	12%	11%	11%	28%
grade 7 events	19349	20905	22683	21963	15854
	15%	16%	17%	17%	11%

## 2.2 Compared Parameters

Parameter	Planned	Actual	Parameter	Planned	Actual
Instrument	ACIS	ACIS	Obspar format version number	7	7
Detector	ACIS-01237	ACIS-01237	Obspar file type	PREDICTED	ACTUAL
Grating	NONE	NONE	Obspar update status	NONE	UPDATED
Data mode	FAINT	FAINT	On-chip summing requested	N	N
Observation mode	SECONDARY	SECONDARY	Subarray requested	NONE	NONE
[deg] Pointing RA	0	26.97361661950018	Alternating exposures requested	N	Y
[deg] Pointing Dec	0	-12.99251187508144	[s] Primary exposure time	0.000000	4
[deg] Pointing Roll	0.0	125.9826038202229	[s] Secondary exposure time	N/A	3.2
[mm] SIM focus pos	-0.782348	-0.7809083437167272	Duty cycle	N/A	1
[mm] SIM defocus	0	0.7524282956875696			
[mm] SIM translation stage pos	-233.592463	250.466033080201			
[mm] SIM translation stage offset	0	-0.01005468664627074			
[s] Observation start time (MET)	203098503.091038	203098502.06604			
Observation start date	2004-06-08T16:15:03	2004-06-08T16:15:02			
[s] Observation end time (MET)	203111069.591594	203111068.5666			
Observation end date	2004-06-08T19:44:30	2004-06-08T19:44:28			
Read mode	TIMED	TIMED			

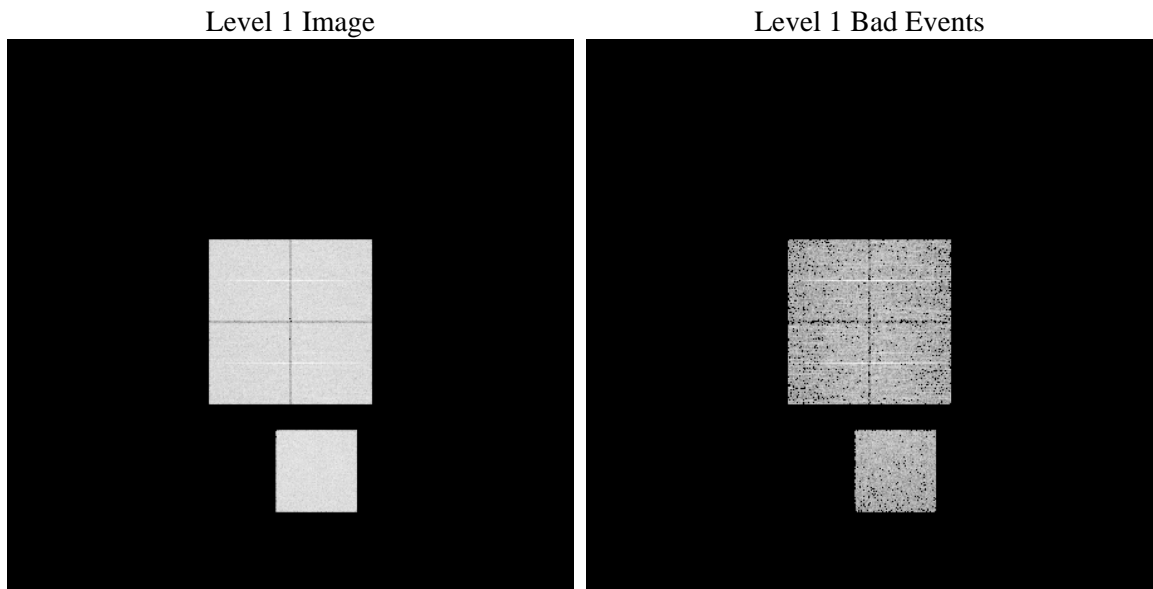
## 2.3 Star Slots

## 2.4 FID Slots

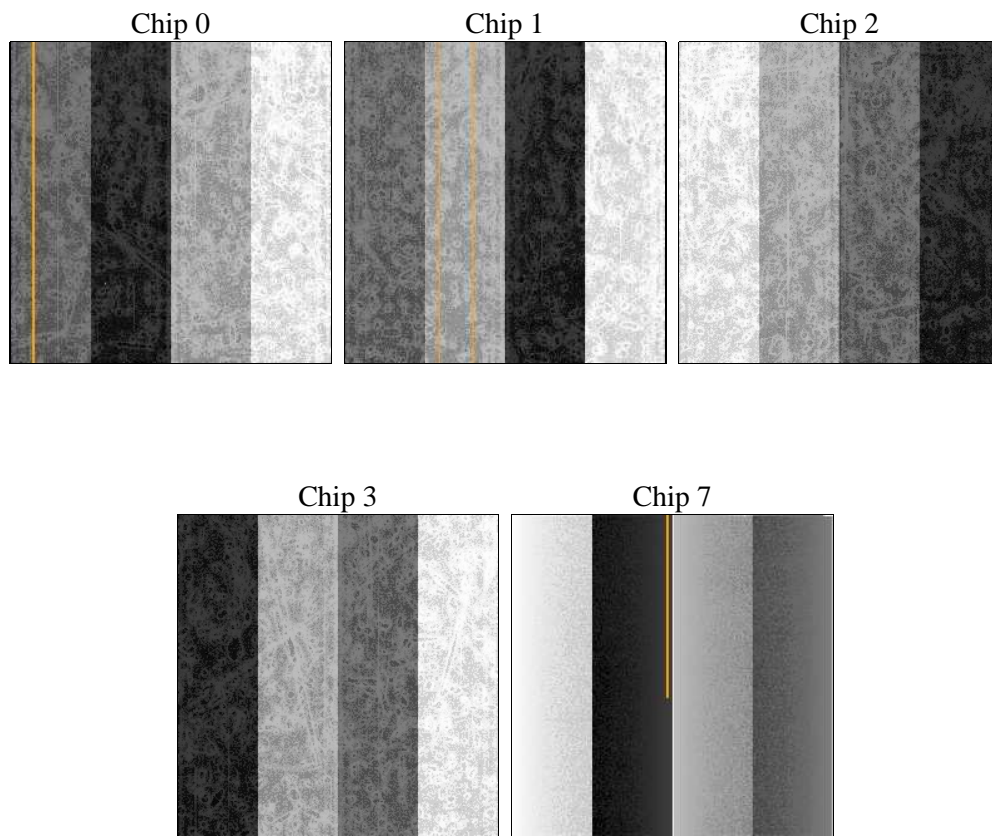
# 3 OBI Secondary

## 3.1 OBI

### 3.1.1 Images



### 3.1.2 Bias



### 3.1.3 Parameters

obi_num	0	Obi number	sched_exp_time	0.0	[s] Scheduled observation exposure time
ascdsver	8.4.5	Processing system revision	ontime	2848.0051592886	Sum of GTIs [s]
caldbver	4.5.2	&#160	ontime0	2792.9074794352	Sum of GTIs [s]
date	2012-12-03T07:03:28	Date and time of file creation	ontime1	2763.7381195128	Sum of GTIs [s]
revision	3	Processing version of data	ontime2	2540.1063601077	Sum of GTIs [s]
			ontime3	2705.399399668	Sum of GTIs [s]
			ontime7	2848.0051592886	Sum of GTIs [s]
			l1events	518316	Number of level 1 events

### 3.1.4 Events

	<b>ccd 0</b>	<b>ccd 1</b>	<b>ccd 2</b>	<b>ccd 3</b>	<b>ccd 7</b>
level 1 events	102424	103222	97351	103610	111709
rejected events	18514	19484	19687	20717	17521
rejected %	18%	18%	20%	19%	15%

	<b>ccd 0</b>	<b>ccd 1</b>	<b>ccd 2</b>	<b>ccd 3</b>	<b>ccd 7</b>
grade 0 events	46398	45889	43723	46545	22984
	45%	44%	44%	44%	20%
grade 1 events	266	237	241	262	62
	0%	0%	0%	0%	0%
grade 2 events	14583	14993	12883	14259	20723
	14%	14%	13%	13%	18%
grade 3 events	5454	5383	5079	5461	9505
	5%	5%	5%	5%	8%
grade 4 events	5523	5420	5210	5468	9335
	5%	5%	5%	5%	8%
grade 5 events	1209	1271	1074	1321	3083
	1%	1%	1%	1%	2%
grade 6 events	12062	12140	10845	11255	31746
	11%	11%	11%	10%	28%
grade 7 events	16929	17889	18296	19039	14271
	16%	17%	18%	18%	12%



## A Summary

### A.1 Status

V&V Scientist	Jen Lauer
V&V Date (YYYY-MM-DD)	2012.12.18
V&V Edition	1
V&V Disposition and Status	OK
V&V Charge Time	6.3944512693584

### A.2 Comments

Interleave mode