

V&V Reference Report

L2 ASCDS Version : 7.6.7.2

Observation 60205 - L2 Version _e1
Chandra X-Ray Center

L2 Processing Date : May 1 2006

Contents

1	Front	2
2	OBI Primary	3
2.1	OBI	3
2.1.1	Images	3
2.1.2	Bias	3
2.1.3	Parameters	4
2.1.4	Events	4
2.2	Compared Parameters	5
2.3	Aspect	6
2.4	Star Slots	8
2.5	FID Slots	8
3	OBI Secondary	8
3.1	OBI	8
3.1.1	Images	8
3.1.2	Bias	8
3.1.3	Parameters	9
3.1.4	Events	9
A	Summary	10
A.1	Status	10
A.2	Comments	10

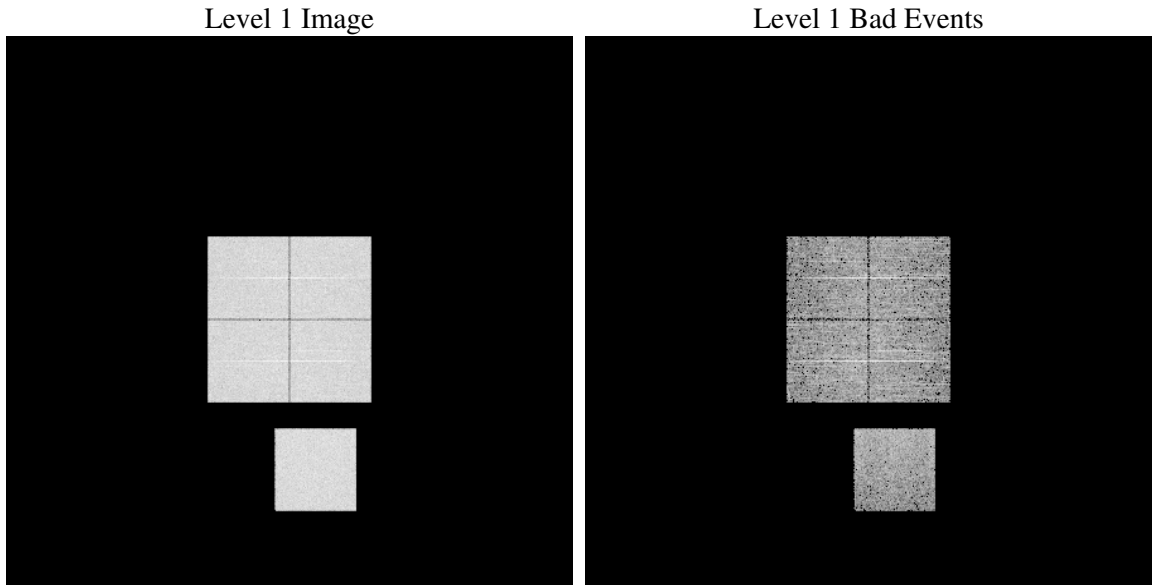
1 Front

seq_num	
obs_id	60205
title	ACIS-01237 diagnostics
observer	CHANDRA engineering request/realtime commanding
object	
dtcycle	0
cycle	P
ra_targ	0.0
dec_targ	0.0
ra_nom	26.973633342192
dec_nom	-12.992534371804
roll_nom	125.98260757287
revision	2
ontime	3546.4461100698
livetime	3510.4291074275
ontime0	3522.19987005
ontime1	3514.1177900434
ontime2	3433.2969899774
ontime3	3461.5842700005
ontime7	3546.4461100698
l2events	505706

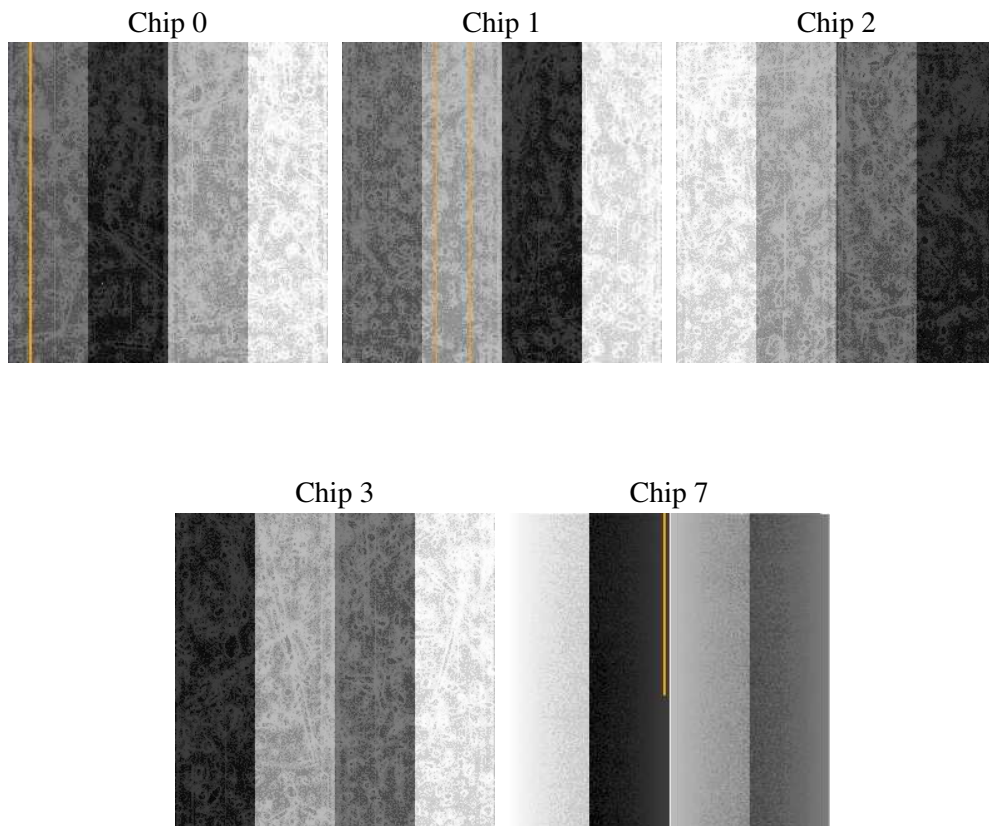
2 OBI Primary

2.1 OBI

2.1.1 Images



2.1.2 Bias



2.1.3 Parameters

obi_num	0
ascdsver	7.6.7.2
caldbver	3.2.1
date	2006-05-01T21:39:08
revision	2

sched_exp_time	0.0
ontime	3552.0741629004
ontime0	3527.8279228806
ontime1	3519.7458428741
ontime2	3438.9250428081
ontime3	3467.2123228312
ontime7	3552.0741629004
llevents	649339

2.1.4 Events

	ccd 0	ccd 1	ccd 2	ccd 3	ccd 7
level 1 events	126815	128109	128531	128789	137095
rejected events	21407	22915	24671	24089	24366
rejected %	16%	17%	19%	18%	17%

	ccd 0	ccd 1	ccd 2	ccd 3	ccd 7
grade 0 events	58023	57588	58050	58730	20303
	45%	44%	45%	45%	14%
grade 1 events	392	321	390	413	58
	0%	0%	0%	0%	0%
grade 2 events	18491	18767	17500	17997	33803
	14%	14%	13%	13%	24%
grade 3 events	6897	6749	6785	6777	8290
	5%	5%	5%	5%	6%
grade 4 events	6815	6823	6814	6972	8040
	5%	5%	5%	5%	5%
grade 5 events	1544	1570	1472	1590	3128
	1%	1%	1%	1%	2%
grade 6 events	15304	15386	14837	14347	42426
	12%	12%	11%	11%	30%
grade 7 events	19349	20905	22683	21963	21047
	15%	16%	17%	17%	15%

2.2 Compared Parameters

Parameter	Planned	Actual	Parameter	Planned	Actual
Instrument	ACIS	ACIS	Obspar format version number	6	6
Detector	ACIS-01237	ACIS-01237	Obspar file type	PREDICTED	ACTUAL
Grating	NONE	NONE	Obspar update status	NONE	UPDATED
Data mode	FAINT	FAINT	On-chip summing requested	N	N
Observation mode	SECONDARY	SECONDARY	Subarray requested	NONE	NONE
Pointing RA	0	26.97363334219241	Alternating exposures requested	N	Y
Pointing Dec	0	-12.99253437180435	Primary exposure time	0.000000	4
Pointing Roll	0.0	125.9826075728723	Secondary exposure time	N/A	3.2
SIM focus pos (mm)	-0.782348	-0.7809083437167272	Duty cycle	N/A	1
SIM defocus (mm)	0	0.7524282956875696			
SIM translation stage pos (mm)	-233.592463	250.466033080201			
SIM translation stage offset (mm)	0	-0.01005468664627074			
Observation start time	203098503.091038	203098502.06604			
Observation start date	2004-06-08T16:15:03	2004-06-08T16:15:02			
Observation end time	203111069.591594	203111068.5666			
Observation end date	2004-06-08T19:44:30	2004-06-08T19:44:28			
Read mode	TIMED	TIMED			

2.3 Aspect

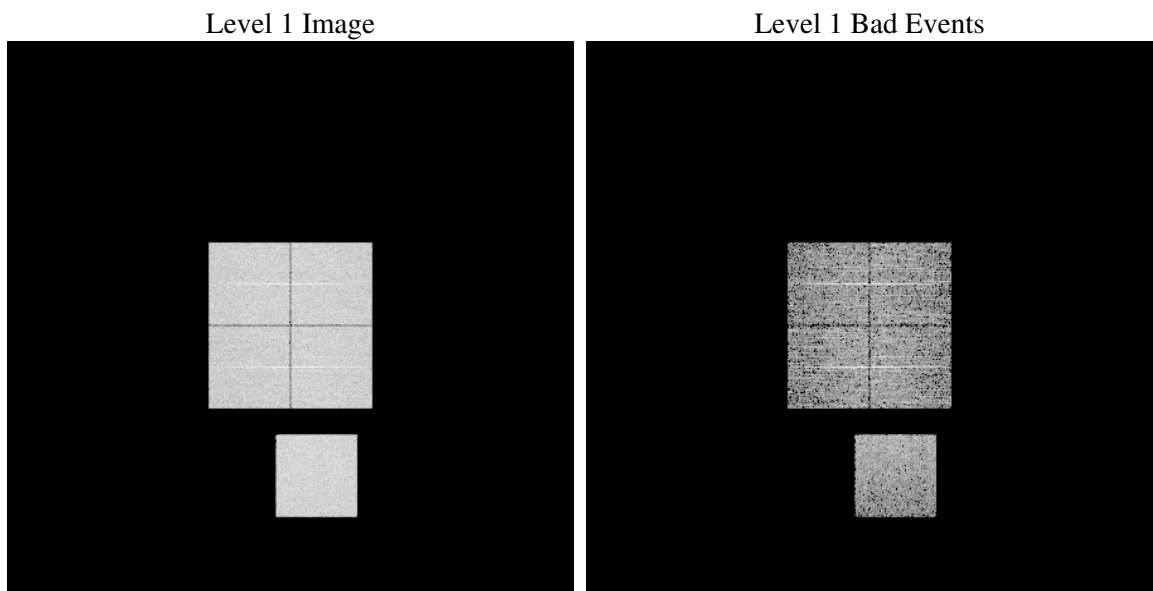
2.4 Star Slots

2.5 FID Slots

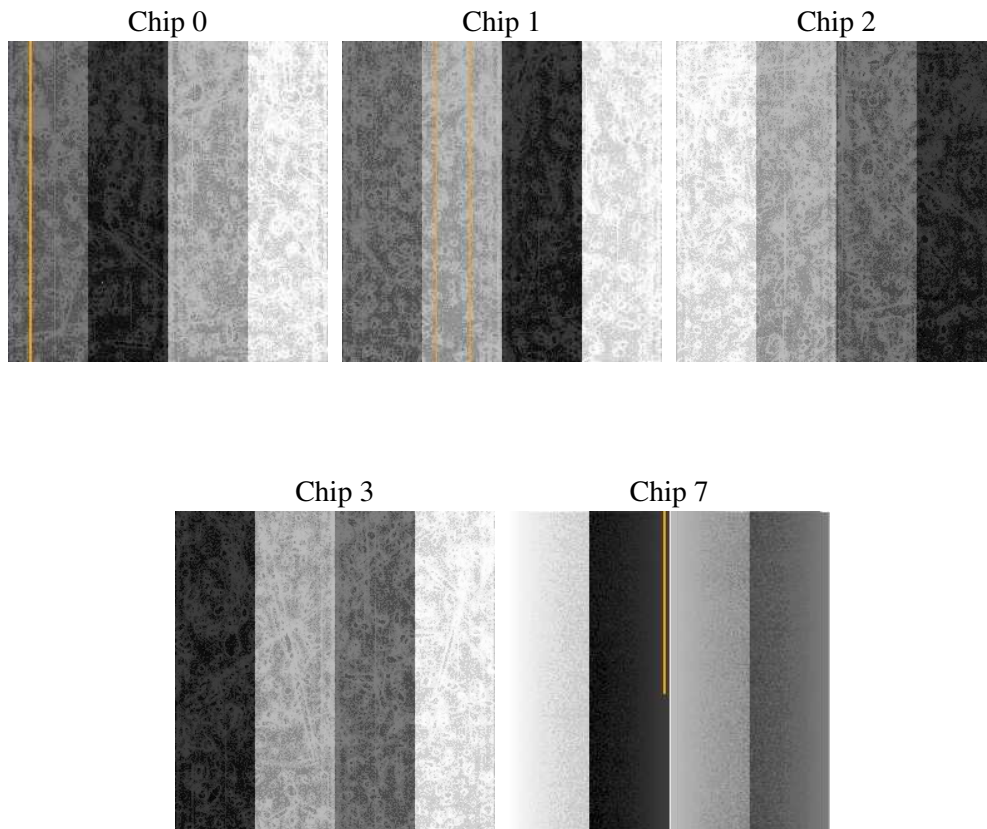
3 OBI Secondary

3.1 OBI

3.1.1 Images



3.1.2 Bias



3.1.3 Parameters

obi_num	0
ascdsver	7.6.7.2
caldsver	3.2.1
date	2006-05-01T21:41:23
revision	2

sched_exp_time	0.0
ontime	2852.1151924133
ontime0	2797.0175125599
ontime1	2767.8481526375
ontime2	2544.2163932323
ontime3	2709.5094327927
ontime7	2852.1151924133
l1events	518316

3.1.4 Events

	ccd 0	ccd 1	ccd 2	ccd 3	ccd 7
level 1 events	102424	103222	97351	103610	111709
rejected events	18499	19500	19705	20739	21229
rejected %	18%	18%	20%	20%	19%

	ccd 0	ccd 1	ccd 2	ccd 3	ccd 7
grade 0 events	46399	45890	43723	46545	15784
	45%	44%	44%	44%	14%
grade 1 events	266	237	241	262	40
	0%	0%	0%	0%	0%
grade 2 events	14582	14992	12883	14259	27410
	14%	14%	13%	13%	24%
grade 3 events	5454	5384	5079	5461	6669
	5%	5%	5%	5%	5%
grade 4 events	5523	5420	5210	5468	6359
	5%	5%	5%	5%	5%
grade 5 events	1209	1271	1074	1322	2501
	1%	1%	1%	1%	2%
grade 6 events	12062	12139	10845	11254	34380
	11%	11%	11%	10%	30%
grade 7 events	16929	17889	18296	19039	18566
	16%	17%	18%	18%	16%

A Summary

A.1 Status

V&V Scientist	Jen Lauer
V&V Date (YYYY-MM-DD)	2006.05.02
V&V Edition	1
V&V Disposition and Status	OK
V&V Charge Time	6.39445126

A.2 Comments

Interleave mode