

V&V Reference Report

L2 ASCDS Version : 8.4.5

Observation 60203 - L2 Version 3
Chandra X-Ray Center

L2 Processing Date : Dec 3 2012

Contents

1	Front	2
2	OBI	3
2.1	OBI	3
2.1.1	Images	3
2.1.2	Bias	3
2.1.3	Parameters	4
2.1.4	Events	4
2.2	Compared Parameters	5
2.3	Star Slots	6
2.4	FID Slots	6
A	Summary	7
A.1	Status	7
A.2	Comments	7

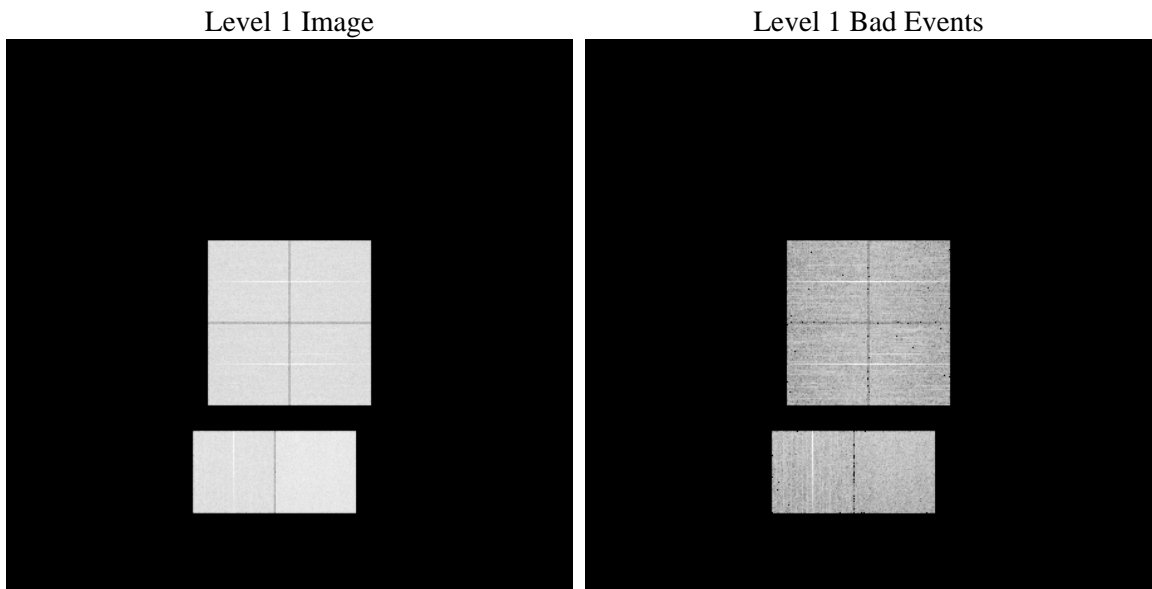
1 Front

seq_num	 	Sequence number
obs_id	60203	Observation id
title	ACIS-012367 diagnostics	Proposal title
observer	CHANDRA engineering request/realtime commanding	Principal investig
object	 	Source name
dtcycle	0	
cycle	P	events from which exps? Prim/Second/Both
ra_targ	0.0	Observer's specified target RA [deg]
dec_targ	0.0	Observer's specified target Dec [deg]
ra_nom	36.9694193863	Nominal RA [deg]
dec_nom	-22.994793616609	Nominal Dec [deg]
roll_nom	136.62517843303	Nominal Roll [deg]
revision	3	Processing version of data
ontime	8278.1064182818	Sum of GTIs [s]
livetime	8173.2840503362	Livetime [s]
ontime0	6294.0424523354	Sum of GTIs [s]
ontime1	6339.9296007156	Sum of GTIs [s]
ontime2	5908.8396371603	Sum of GTIs [s]
ontime3	6125.5126070082	Sum of GTIs [s]
ontime6	6592.6434094906	Sum of GTIs [s]
ontime7	8278.1064182818	Sum of GTIs [s]
l2events	1161022	Number of level 2 events

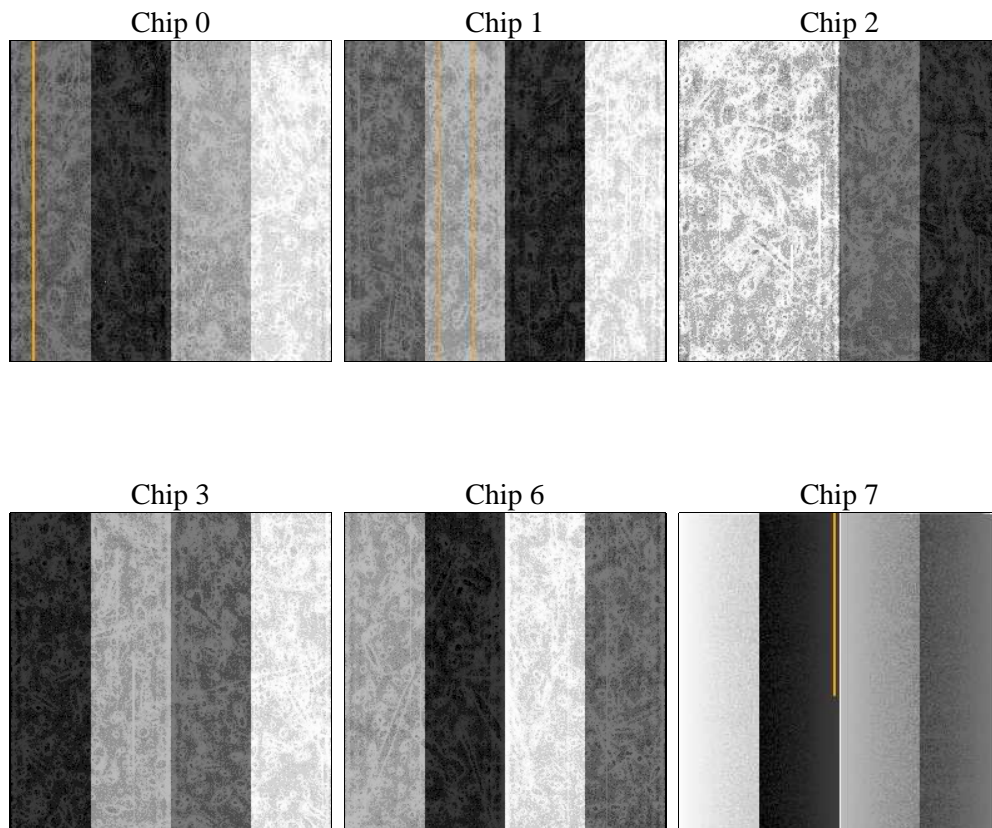
2 OBI

2.1 OBI

2.1.1 Images



2.1.2 Bias



2.1.3 Parameters

obi_num	0	Obi number	sched_exp_time	0.0	[s] Scheduled observation exposure time
ascdsver	8.4.5	Processing system revision	ontime	8278.1064182818	Sum of GTIs [s]
caldsver	4.5.2	 	ontime0	6294.0424523354	Sum of GTIs [s]
date	2012-12-03T07:29:07	Date and time of file creation	ontime1	6339.9296007156	Sum of GTIs [s]
revision	3	Processing version of data	ontime2	5908.8396371603	Sum of GTIs [s]
			ontime3	6125.5126070082	Sum of GTIs [s]
			ontime6	6592.6434094906	Sum of GTIs [s]
			ontime7	8278.1064182818	Sum of GTIs [s]
			l1events	1500171	Number of level 1 events

2.1.4 Events

	ccd 0	ccd 1	ccd 2	ccd 3	ccd 6	ccd 7		ccd 0	ccd 1	ccd 2	ccd 3	ccd 6	ccd 7
level 1 events	231821	233601	223546	233391	255951	321861	grade 0 events	103871	103761	100752	104440	111910	64828
rejected events	44012	43557	45168	48331	49899	50753		44%	44%	45%	44%	43%	20%
rejected %	18%	18%	20%	20%	19%	15%	grade 1 events	600	537	616	620	522	221
								0%	0%	0%	0%	0%	0%
							grade 2 events	32454	34179	29538	31024	35505	59756
								13%	14%	13%	13%	13%	18%
							grade 3 events	12213	11961	11742	12000	12763	26823
								5%	5%	5%	5%	4%	8%
							grade 4 events	11955	12036	11631	11975	12740	26411
								5%	5%	5%	5%	4%	8%
							grade 5 events	2770	2832	2557	2852	3194	8982
								1%	1%	1%	1%	1%	2%
							grade 6 events	27316	28209	24809	25621	33250	93389
								11%	12%	11%	10%	12%	29%
							grade 7 events	40642	40086	41901	44859	46067	41451
								17%	17%	18%	19%	17%	12%

2.2 Compared Parameters

Parameter	Planned	Actual
Instrument	ACIS	ACIS
Detector	ACIS-012367	ACIS-012367
Grating	NONE	NONE
Data mode	FAINT	FAINT
Observation mode	SECONDARY	SECONDARY
[deg] Pointing RA	0	36.96941938629955
[deg] Pointing Dec	0	-22.9947936166092
[deg] Pointing Roll	0.0	136.6251784330289
[mm] SIM focus pos	-0.782348	-0.7809083437167272
[mm] SIM defocus	0	0.7524282956875696
[mm] SIM translation stage pos	-233.592463	250.466033080201
[mm] SIM translation stage offset	0	-0.01005468664627074
[s] Observation start time (MET)	203133734.392596	203133733.3676
Observation start date	2004-06-09T02:02:14	2004-06-09T02:02:13
[s] Observation end time (MET)	203157159.743631	203157158.71864
Observation end date	2004-06-09T08:32:40	2004-06-09T08:32:38
Read mode	TIMED	TIMED

Parameter	Planned	Actual
Obspar format version number	7	7
Obspar file type	PREDICTED	ACTUAL
Obspar update status	NONE	UPDATED
On-chip summing requested	N	N
Subarray requested	NONE	NONE
Alternating exposures requested	N	N
[s] Primary exposure time	0.000000	3.2

2.3 Star Slots

2.4 FID Slots

A Summary

A.1 Status

V&V Scientist	Jen Lauer
V&V Date (YYYY-MM-DD)	2012.12.18
V&V Edition	1
V&V Disposition and Status	OK
V&V Charge Time	8.2781064182818

A.2 Comments