

V&V Reference Report

L2 ASCDS Version : 7.6.11.10

Observation 60175 - L2 Version 3
Chandra X-Ray Center

L2 Processing Date : Feb 4 2009

Contents

1	Front	2
2	OBI Primary	3
2.1	OBI	3
2.1.1	Images	3
2.1.2	Bias	3
2.1.3	Parameters	4
2.1.4	Events	4
2.2	Compared Parameters	5
2.3	Star Slots	6
2.4	FID Slots	6
3	OBI Secondary	6
3.1	OBI	6
3.1.1	Images	6
3.1.2	Bias	6
3.1.3	Parameters	7
3.1.4	Events	7
A	Summary	8
A.1	Status	8
A.2	Comments	8

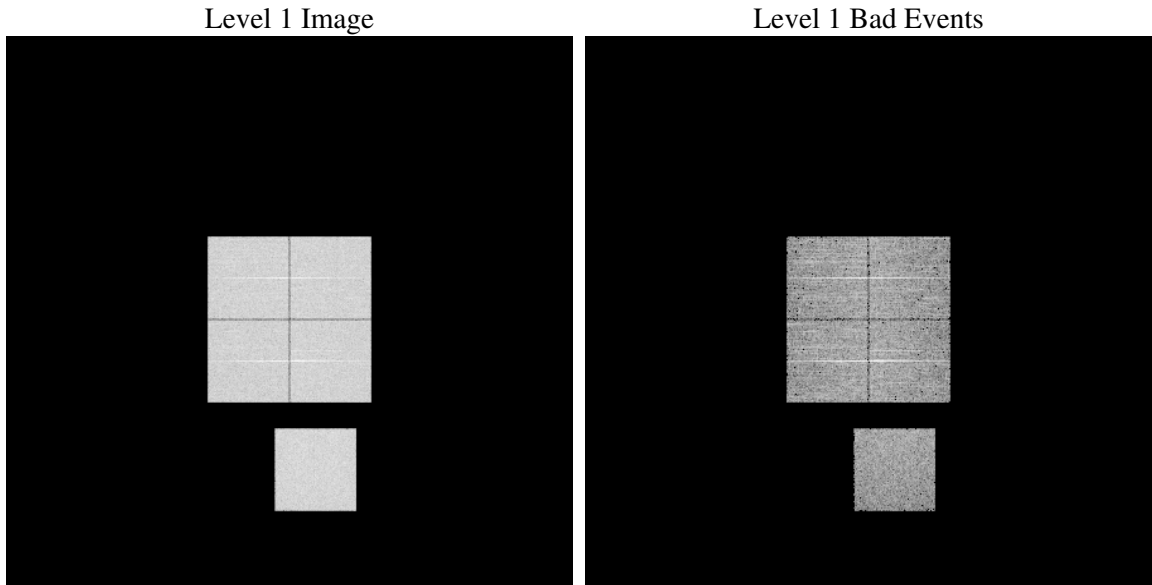
1 Front

seq_num	
obs_id	60175
title	ACIS-01237 diagnostics
observer	CHANDRA engineering request/realtime commanding
object	
dtcycle	0
cycle	P
ra_targ	0.0
dec_targ	0.0
ra_nom	156.92467965775
dec_nom	-33.513298760598
roll_nom	103.99859650868
revision	3
ontime	4268.582636863
livetime	4219.1105519905
ontime0	4226.2543168366
ontime1	4247.4595168531
ontime2	4017.2508766353
ontime3	4187.1797567904
ontime7	4268.582636863
l2events	597426

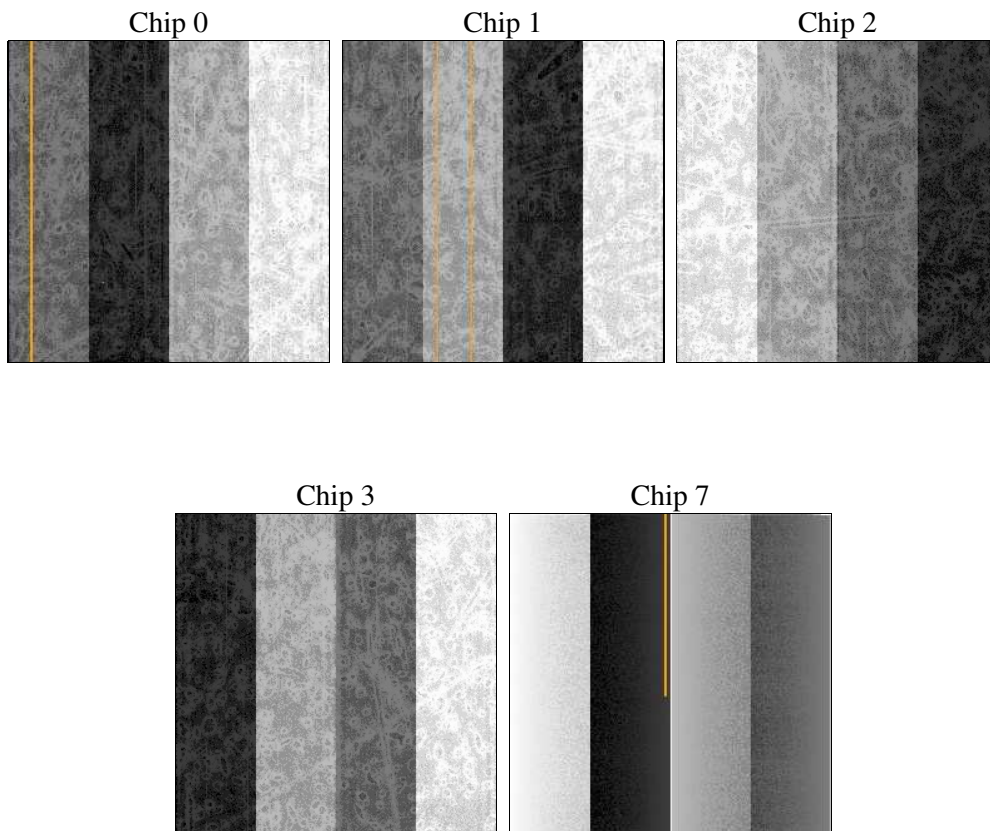
2 OBI Primary

2.1 OBI

2.1.1 Images



2.1.2 Bias



2.1.3 Parameters

obi_num	0
ascdsver	7.6.11.10
caldbver	3.5.1
date	2009-02-04T14:46:26
revision	3

sched_exp_time	900
ontime	4268.582636863
ontime0	4226.2543168366
ontime1	4247.4595168531
ontime2	4017.2508766353
ontime3	4187.1797567904
ontime7	4268.582636863
llevents	796587

2.1.4 Events

	ccd 0	ccd 1	ccd 2	ccd 3	ccd 7
level 1 events	157668	158503	153199	159019	168198
rejected events	34149	33755	35775	35247	29948
rejected %	21%	21%	23%	22%	17%

	ccd 0	ccd 1	ccd 2	ccd 3	ccd 7
grade 0 events	70058	68308	68494	72053	33849
	44%	43%	44%	45%	20%
grade 1 events	389	344	449	426	100
	0%	0%	0%	0%	0%
grade 2 events	22255	24928	19624	21094	31435
	14%	15%	12%	13%	18%
grade 3 events	8147	7874	7890	8228	14059
	5%	4%	5%	5%	8%
grade 4 events	7976	7699	7699	8057	13801
	5%	4%	5%	5%	8%
grade 5 events	1780	1865	1718	1922	4631
	1%	1%	1%	1%	2%
grade 6 events	18861	19643	17419	18008	49310
	11%	12%	11%	11%	29%
grade 7 events	28202	27842	29906	29231	21013
	17%	17%	19%	18%	12%

2.2 Compared Parameters

Parameter	Planned	Actual
Instrument	ACIS	ACIS
Detector	ACIS-01237	ACIS-01237
Grating	NONE	NONE
Data mode	FAINT	FAINT
Observation mode	SECONDARY	SECONDARY
Pointing RA	156.9246796577508	156.9246796577508
Pointing Dec	-33.51329876059842	-33.51329876059842
Pointing Roll	103.9985965086812	103.9985965086812
SIM focus pos (mm)	-0.78090834371673	-0.78090834371673
SIM defocus (mm)	0.7524282194390134	0.7524282194390134
SIM translation stage pos (mm)	250.4660330802	250.4660330802
SIM translation stage offset (mm)	-0.01005726120527584	-0.01005726120527584
Observation start time	204058712.883544	204058712.883544
Observation start date	2004-06-19T19:01:00	2004-06-19T18:58:32
Observation end time	204067449.274438	204067449.274438
Observation end date	2004-06-19T19:16:00	2004-06-19T21:24:09
Read mode	TIMED	TIMED

Parameter	Planned	Actual
Obspar format version number	6	6
Obspar file type	PREDICTED	ACTUAL
Obspar update status	OVERRIDE	OVERRIDE
Number of optional ACIS chips dropped	0	0
On-chip summing requested	N	N
Subarray requested	NONE	NONE
Alternating exposures requested	Y	Y
Primary exposure time	3.5	3.5
Secondary exposure time	3.2	3.2
Duty cycle	1	1

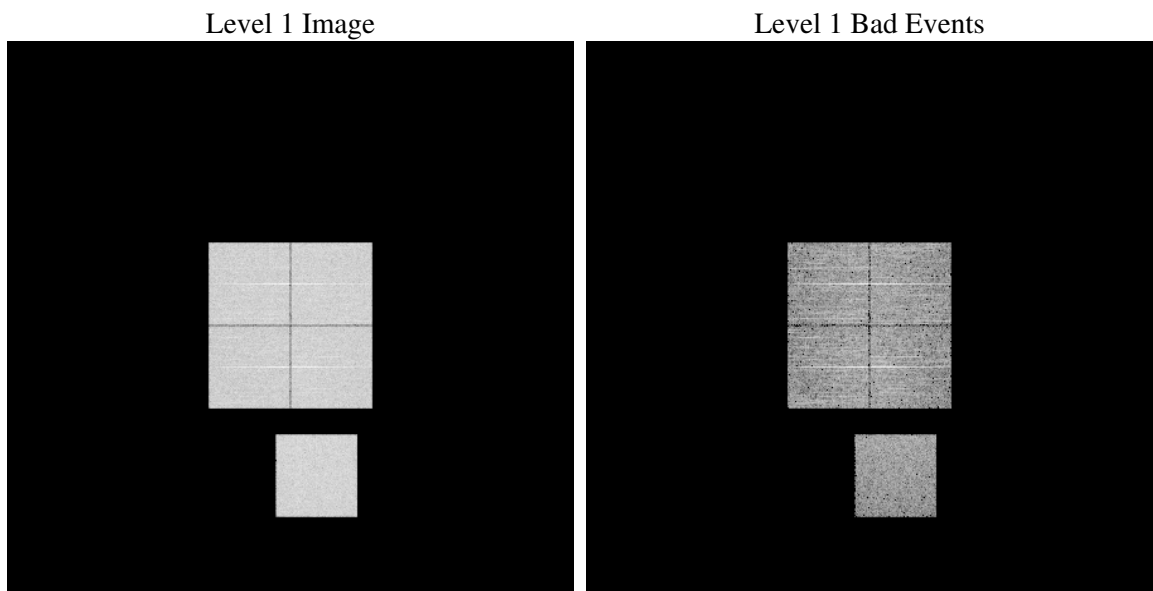
2.3 Star Slots

2.4 FID Slots

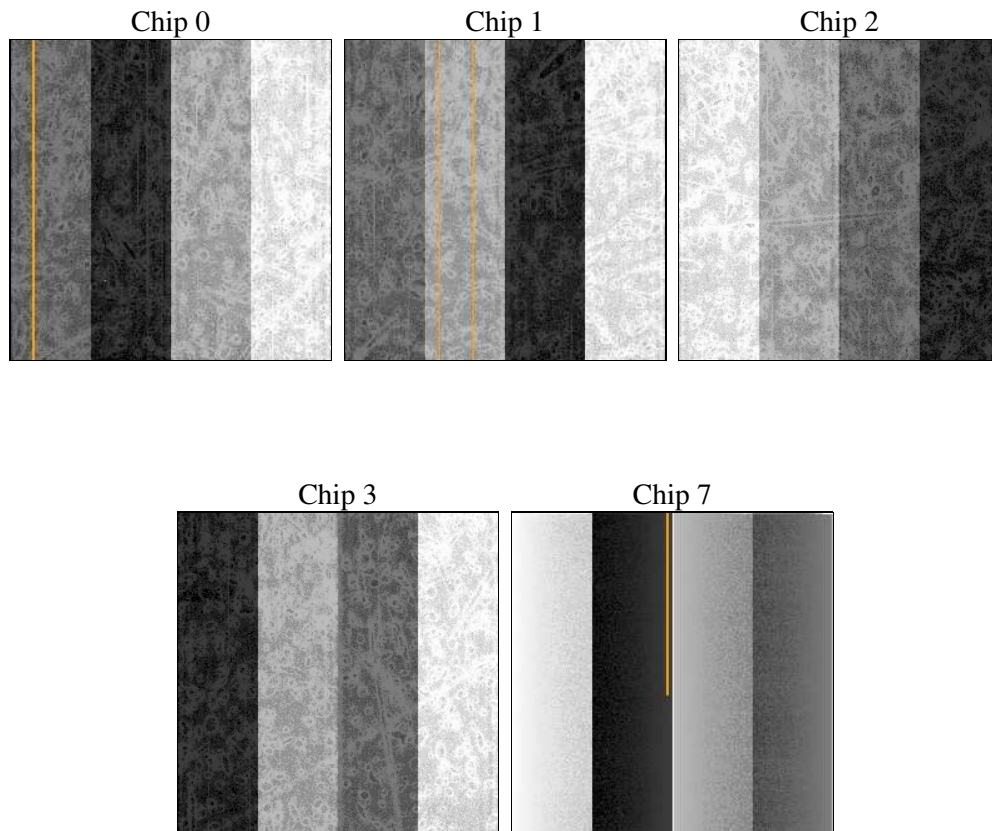
3 OBI Secondary

3.1 OBI

3.1.1 Images



3.1.2 Bias



3.1.3 Parameters

obi_num	0
ascdsver	7.6.11.10
caldsver	3.5.1
date	2009-02-04T14:51:19
revision	3

sched_exp_time	900
ontime	3909.1052574217
ontime0	3850.7665375769
ontime1	3899.3821374476
ontime2	3588.2422982752
ontime3	3798.9098977149
ontime7	3909.1052574217
l1events	728514

3.1.4 Events

	ccd 0	ccd 1	ccd 2	ccd 3	ccd 7
level 1 events	144749	147316	137860	144755	153834
rejected events	32168	32979	32375	32008	28087
rejected %	22%	22%	23%	22%	18%

	ccd 0	ccd 1	ccd 2	ccd 3	ccd 7
grade 0 events	64077	62895	61841	65851	30539
	44%	42%	44%	45%	19%
grade 1 events	341	277	383	361	84
	0%	0%	0%	0%	0%
grade 2 events	20051	22901	17389	18894	28256
	13%	15%	12%	13%	18%
grade 3 events	7319	7117	7046	7422	12731
	5%	4%	5%	5%	8%
grade 4 events	7396	7178	6895	7448	12576
	5%	4%	5%	5%	8%
grade 5 events	1762	1744	1543	1812	4435
	1%	1%	1%	1%	2%
grade 6 events	17205	17686	15467	16281	45469
	11%	12%	11%	11%	29%
grade 7 events	26598	27518	27296	26686	19744
	18%	18%	19%	18%	12%

A Summary

A.1 Status

V&V Scientist	Jen Lauer
V&V Date (YYYY-MM-DD)	2009.02.05
V&V Edition	1
V&V Disposition and Status	OK
V&V Charge Time	8.17768789

A.2 Comments

Focal plane temperature is warmer than -118.7 C degrees during the entire observation. This temperature is the upper limit of the verified ACIS calibration for the front-illuminated chips. The focal plane temperature is warmer than -116.7 degrees C for the entire observation. This temperature is the upper limit of the verified ACIS calibration for the back-illuminated chips. The ACIS spectral response calibration is less accurate at these warmer temperatures than it is at -119.7 C. Users whose science objectives depend on the most accurate spectral response (ie: fitting line-rich spectra) may notice an effect. Users whose science objectives do not depend on the most accurate spectral response should not notice an effect.

This obsid was reprocessed to correct minor errors in parameters used in processing. Some of these parameters cannot be determined automatically for this observation and were derived from spacecraft telemetry.