

V&V Reference Report

L2 ASCDS Version : 7.6.7.2

Observation 60164 - L2 Version 001
Chandra X-Ray Center

L2 Processing Date : May 23 2006

Contents

1	Front	2
2	OBI	3
2.1	OBI	3
2.1.1	Images	3
2.1.2	Bias	3
2.1.3	Parameters	4
2.1.4	Events	4
2.2	Compared Parameters	5
2.3	Aspect	6
2.4	Star Slots	8
2.5	FID Slots	8
A	Summary	9
A.1	Status	9
A.2	Comments	9

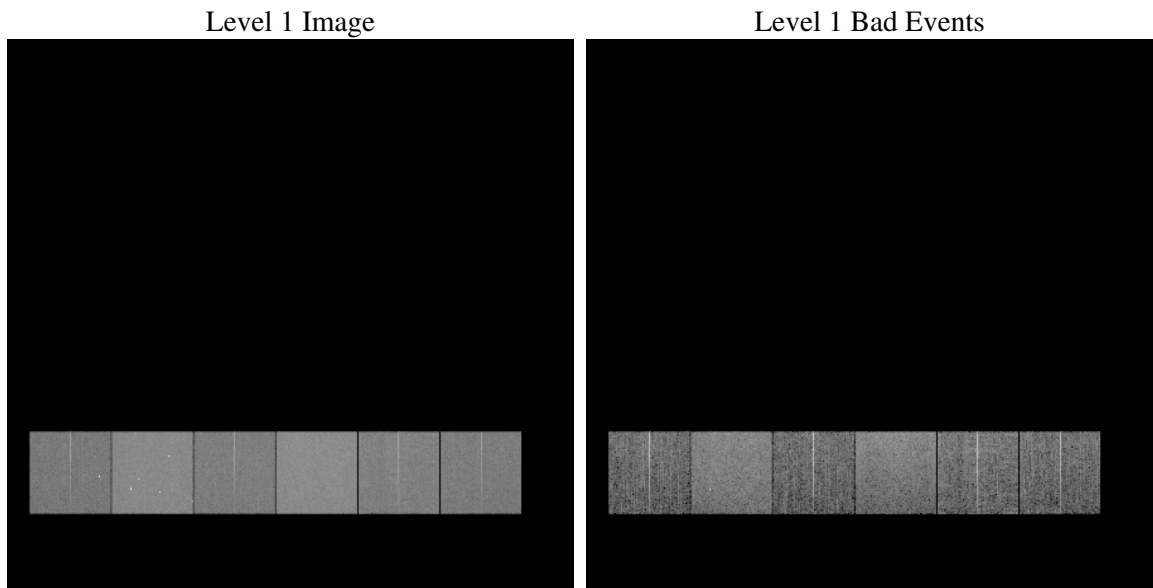
1 Front

seq_num	
obs_id	60164
title	ACIS-456789 diagnostics
observer	CHANDRA engineering request/realtime commanding
object	
dtcycle	0
cycle	P
ra_targ	0.0
dec_targ	0.0
ra_nom	269.03541331595
dec_nom	-38.992172431744
roll_nom	342.95044801377
revision	2
ontime	8280.0209022462
livetime	8175.174291952
ontime4	5334.0973844826
ontime5	8280.0619422495
ontime6	5755.3837268054
ontime7	8280.0209022462
ontime8	5979.0941317677
ontime9	5602.9345762134
l2events	1125775

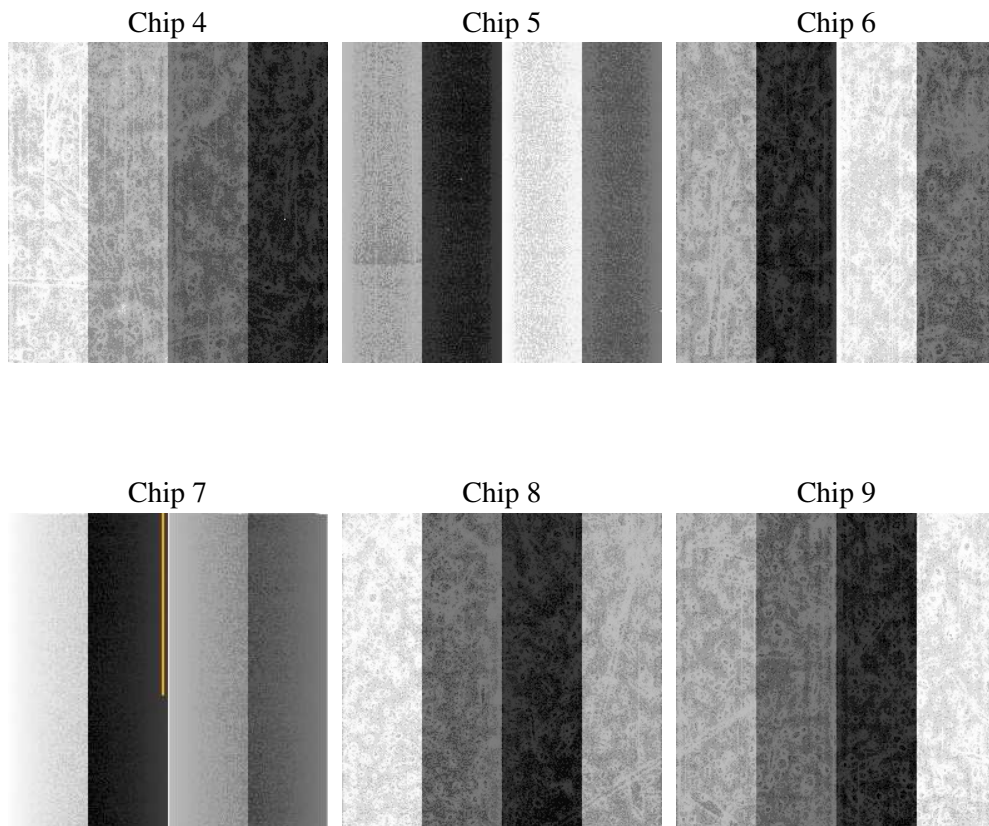
2 OBI

2.1 OBI

2.1.1 Images



2.1.2 Bias



2.1.3 Parameters

obi_num	0
ascdsver	7.6.7.2
caldsver	3.2.2
date	2006-05-24T02:47:08
revision	2

sched_exp_time	0.0
ontime	8280.7678165734
ontime4	5334.7211787999
ontime5	8280.7678165734
ontime6	5756.048561126
ontime7	8280.7678165734
ontime8	5979.6768861115
ontime9	5603.7225305438
l1events	1498562

2.1.4 Events

	ccd 4	ccd 5	ccd 6	ccd 7	ccd 8	ccd 9
level 1 events	198583	303592	222183	320661	240845	212698
rejected events	42567	65851	41820	60630	49497	43067
rejected %	21%	21%	18%	18%	20%	20%

	ccd 4	ccd 5	ccd 6	ccd 7	ccd 8	ccd 9
grade 0 events	90921	28484	97818	44973	104055	93652
	45%	9%	44%	14%	43%	44%
grade 1 events	683	117	469	138	577	554
	0%	0%	0%	0%	0%	0%
grade 2 events	24703	111147	31031	78344	33722	28811
	12%	36%	13%	24%	14%	13%
grade 3 events	10446	7215	11406	18782	12381	10909
	5%	2%	5%	5%	5%	5%
grade 4 events	10262	6963	11378	18521	12366	10850
	5%	2%	5%	5%	5%	5%
grade 5 events	2432	6713	2840	7389	3466	2972
	1%	2%	1%	2%	1%	1%
grade 6 events	19684	83932	28730	99411	28824	25409
	9%	27%	12%	31%	11%	11%
grade 7 events	39452	59021	38511	53103	45454	39541
	19%	19%	17%	16%	18%	18%

2.2 Compared Parameters

Parameter	Planned	Actual	Parameter	Planned	Actual
Instrument	ACIS	ACIS	Obspar format version number	6	6
Detector	ACIS-456789	ACIS-456789	Obspar file type	PREDICTED	ACTUAL
Grating	NONE	NONE	Obspar update status	NONE	UPDATED
Data mode	FAINT	FAINT	On-chip summing requested	N	N
Observation mode	SECONDARY	SECONDARY	Subarray requested	NONE	NONE
Pointing RA	0	269.035413315949	Alternating exposures requested	N	N
Pointing Dec	0	-38.99217243174429	Primary exposure time	3.2	3.2
Pointing Roll	0.0	342.9504480137746			
SIM focus pos (mm)	-0.684267	-0.6828225247311905			
SIM defocus (mm)	0	0.8505141146731063			
SIM translation stage pos (mm)	-190.132523	250.466033080201			
SIM translation stage offset (mm)	0	-0.01005468664627074			
Observation start time	204514300.80372	204514299.77872			
Observation start date	2004-06-25T01:31:41	2004-06-25T01:31:39			
Observation end time	204527117.404288	204527116.37928			
Observation end date	2004-06-25T05:05:17	2004-06-25T05:05:16			
Read mode	TIMED	TIMED			

2.3 Aspect

2.4 Star Slots

2.5 FID Slots

A Summary

A.1 Status

V&V Scientist	Jen Lauer
V&V Date (YYYY-MM-DD)	2006.05.24
V&V Edition	1
V&V Disposition and Status	OK
V&V Charge Time	8.2800209

A.2 Comments