

# V&V Reference Report

## L2 ASCDS Version : 7.6.7.2

Observation 60161 - L2 Version 001  
Chandra X-Ray Center

L2 Processing Date : May 24 2006

## Contents

<b>1</b>	<b>Front</b>	<b>2</b>
<b>2</b>	<b>OBI</b>	<b>3</b>
2.1	OBI . . . . .	3
2.1.1	Images . . . . .	3
2.1.2	Bias . . . . .	3
2.1.3	Parameters . . . . .	4
2.1.4	Events . . . . .	4
2.2	Compared Parameters . . . . .	5
2.3	Aspect . . . . .	6
2.4	Star Slots . . . . .	8
2.5	FID Slots . . . . .	8
<b>A</b>	<b>Summary</b>	<b>9</b>
A.1	Status . . . . .	9
A.2	Comments . . . . .	9

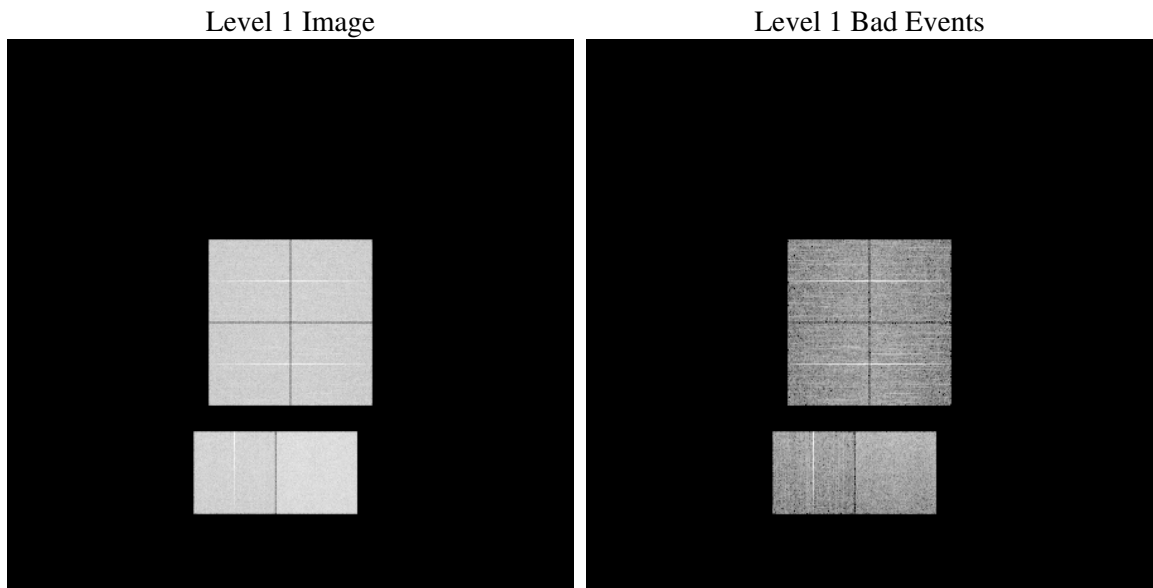
# 1 Front

seq_num	&#160
obs_id	60161
title	ACIS-012367 diagnostics
observer	CHANDRA engineering request/realtime commanding
object	&#160
dtcycle	0
cycle	P
ra_targ	0.0
dec_targ	0.0
ra_nom	324.97607847762
dec_nom	-9.9837825824404
roll_nom	112.53095399576
revision	2
ontime	8281.9704417288
livetime	8177.0991451918
ontime0	6275.8482669592
ontime1	6405.5289453566
ontime2	6100.9176026285
ontime3	6100.7530841827
ontime6	6648.1080462039
ontime7	8281.9704417288
l2events	1147993

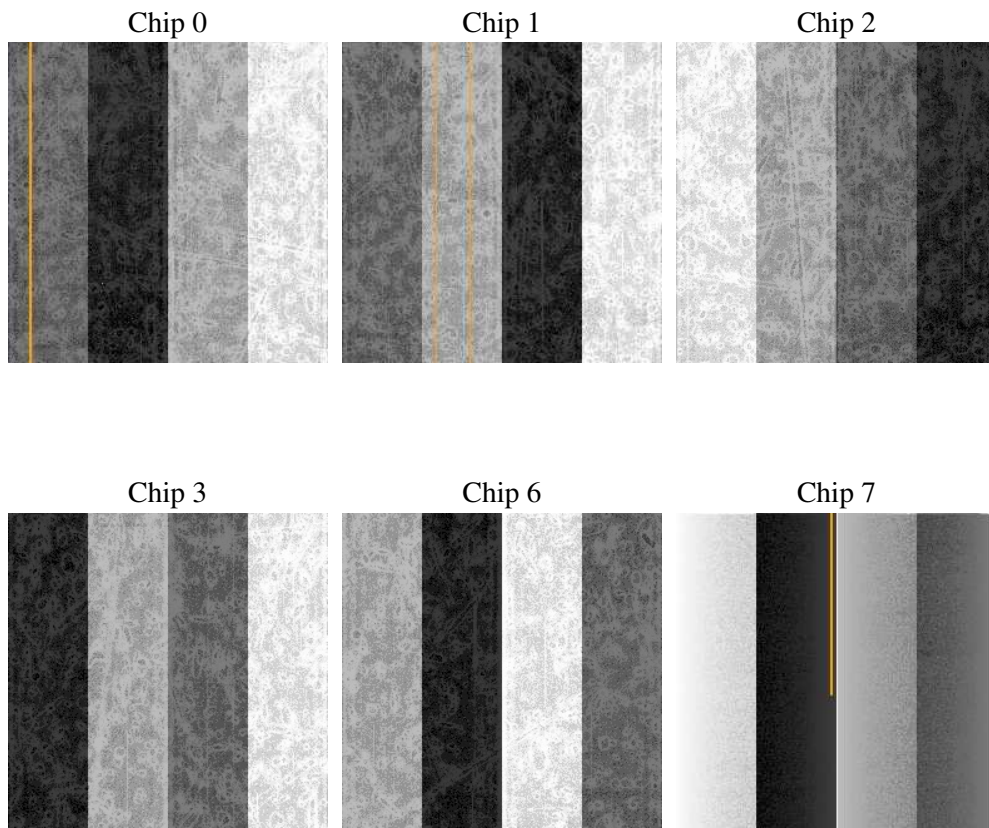
## 2 OBI

### 2.1 OBI

#### 2.1.1 Images



#### 2.1.2 Bias



### 2.1.3 Parameters

obi_num	0
ascdsver	7.6.7.2
caldbver	3.2.2
date	2006-05-24T03:18:58
revision	2

sched_exp_time	0.0
ontime	8284.0103969872
ontime0	6277.8471822143
ontime1	6407.4868206084
ontime2	6102.8344378769
ontime3	6102.8340794444
ontime6	6650.559494108
ontime7	8284.0103969872
l1events	1500352

### 2.1.4 Events

	ccd 0	ccd 1	ccd 2	ccd 3	ccd 6	ccd 7
level 1 events	230565	234779	228360	229398	256010	321240
rejected events	45317	45326	45933	47036	49734	62781
rejected %	19%	19%	20%	20%	19%	19%

	ccd 0	ccd 1	ccd 2	ccd 3	ccd 6	ccd 7
grade 0 events	101701	103756	102626	102713	112040	42693
	44%	44%	44%	44%	43%	13%
grade 1 events	592	528	631	637	577	119
	0%	0%	0%	0%	0%	0%
grade 2 events	32331	33884	30395	30866	35936	79629
	14%	14%	13%	13%	14%	24%
grade 3 events	12043	11984	12046	11799	12688	17862
	5%	5%	5%	5%	4%	5%
grade 4 events	12109	11915	11778	11834	12632	17624
	5%	5%	5%	5%	4%	5%
grade 5 events	2815	2956	2684	3014	3193	7249
	1%	1%	1%	1%	1%	2%
grade 6 events	27166	28012	25664	25252	33083	100762
	11%	11%	11%	11%	12%	31%
grade 7 events	41808	41744	42536	43283	45861	55302
	18%	17%	18%	18%	17%	17%

## 2.2 Compared Parameters

Parameter	Planned	Actual	Parameter	Planned	Actual
Instrument	ACIS	ACIS	Obspar format version number	6	6
Detector	ACIS-012367	ACIS-012367	Obspar file type	PREDICTED	ACTUAL
Grating	NONE	NONE	Obspar update status	NONE	UPDATED
Data mode	FAINT	FAINT	On-chip summing requested	N	N
Observation mode	SECONDARY	SECONDARY	Subarray requested	NONE	NONE
Pointing RA	0	324.9760784776191	Alternating exposures requested	N	N
Pointing Dec	0	-9.983782582440405	Primary exposure time	3.2	3.2
Pointing Roll	0.0	112.5309539957598			
SIM focus pos (mm)	-0.782348	-0.6828225247311905			
SIM defocus (mm)	0	0.8505141146731063			
SIM translation stage pos (mm)	-233.592463	250.466033080201			
SIM translation stage offset (mm)	0	-0.01005468664627074			
Observation start time	204732146.113365	204732145.08837			
Observation start date	2004-06-27T14:02:26	2004-06-27T14:02:25			
Observation end time	204753455.864309	204753454.83931			
Observation end date	2004-06-27T19:57:36	2004-06-27T19:57:34			
Read mode	TIMED	TIMED			

## 2.3 Aspect



## **2.4 Star Slots**

## **2.5 FID Slots**



# A Summary

## A.1 Status

V&V Scientist	Jen Lauer
V&V Date (YYYY-MM-DD)	2006.05.24
V&V Edition	1
V&V Disposition and Status	OK
V&V Charge Time	8.28197044

## A.2 Comments

The ACIS focal plane temperature is above calibration limits for the first 5 ksec of the obsid, and decreases by a degree over the observation.