

# V&V Reference Report

## L2 ASCDS Version : 7.6.7.2

Observation 60157 - L2 Version 001  
Chandra X-Ray Center

L2 Processing Date : Apr 29 2006

## Contents

<b>1</b>	<b>Front</b>	<b>2</b>
<b>2</b>	<b>OBI</b>	<b>3</b>
2.1	OBI . . . . .	3
2.1.1	Images . . . . .	3
2.1.2	Bias . . . . .	3
2.1.3	Parameters . . . . .	4
2.1.4	Events . . . . .	4
2.2	Compared Parameters . . . . .	5
2.3	Aspect . . . . .	6
2.4	Star Slots . . . . .	8
2.5	FID Slots . . . . .	8
<b>A</b>	<b>Summary</b>	<b>9</b>
A.1	Status . . . . .	9
A.2	Comments . . . . .	9

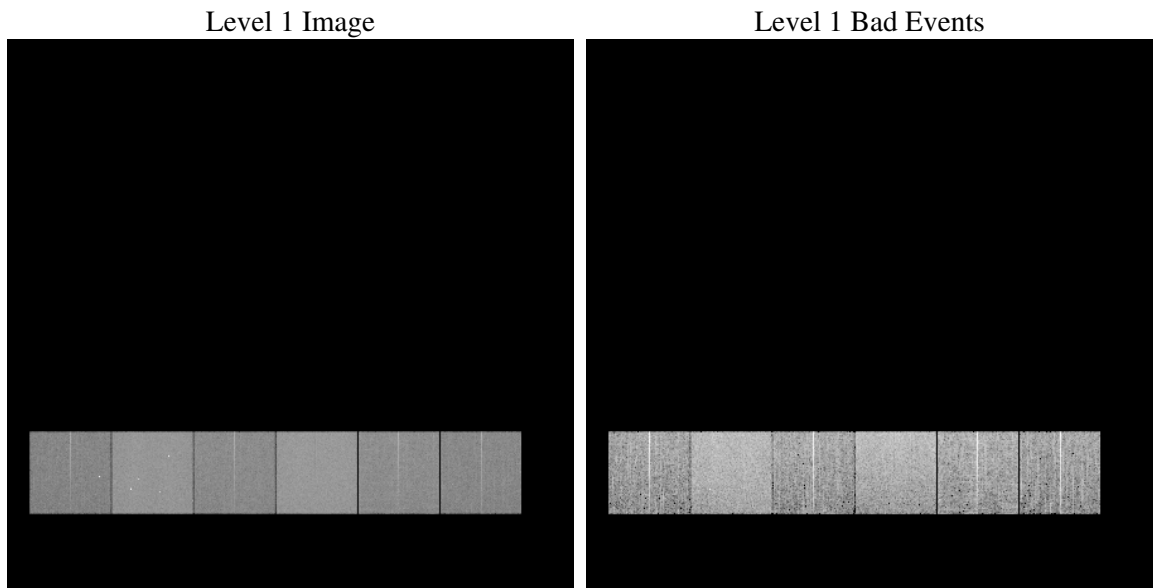
# 1 Front

seq_num	&#160
obs_id	60157
title	ACIS-456789 diagnostics
observer	CHANDRA engineering request/realtime commanding
object	&#160
dtcycle	0
cycle	P
ra_targ	0.0
dec_targ	0.0
ra_nom	299.97140485461
dec_nom	-4.993920666712
roll_nom	137.46515483982
revision	2
ontime	7797.8735527396
livetime	7699.1321824991
ontime4	4877.8759583235
ontime5	7797.9145927429
ontime6	5399.6327190697
ontime7	7797.8735527396
ontime8	5571.4866940081
ontime9	5149.9544379115
l2events	1061751

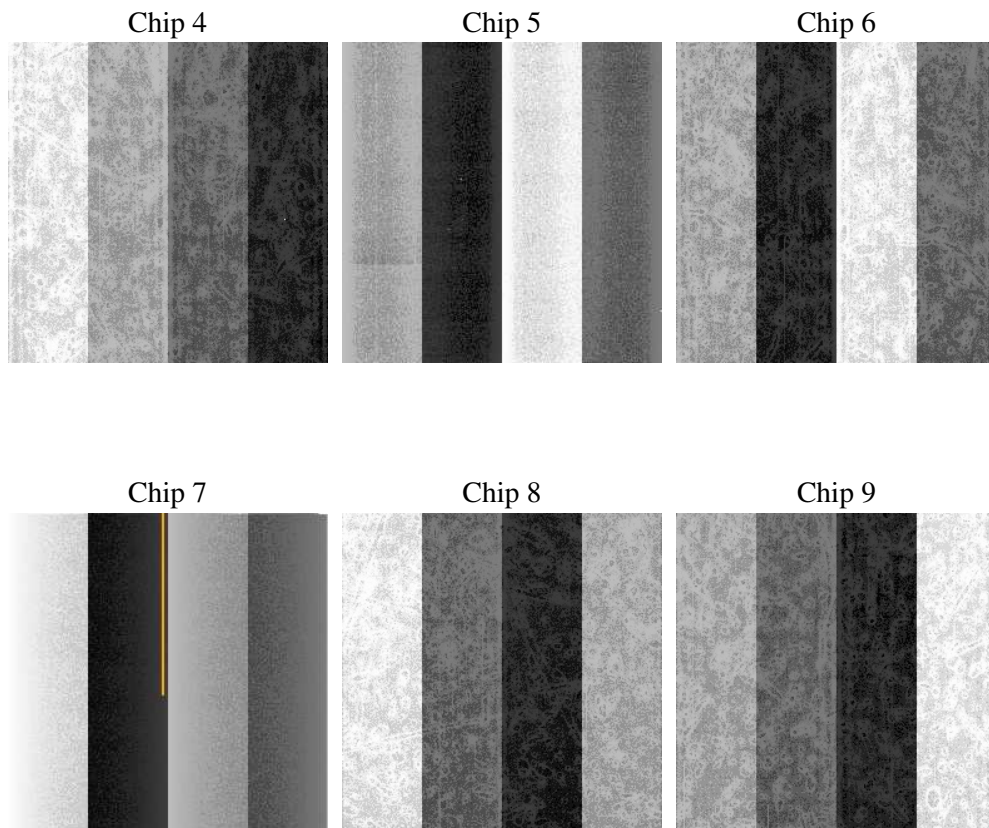
## 2 OBI

### 2.1 OBI

#### 2.1.1 Images



#### 2.1.2 Bias



### 2.1.3 Parameters

obi_num	1
ascdsver	7.6.7.2
caldsver	3.2.1
date	2006-04-29T21:17:20
revision	2

sched_exp_time	0.0
ontime	7801.1013756394
ontime4	4880.9806612134
ontime5	7801.1013756394
ontime6	5402.7784619629
ontime7	7801.1013756394
ontime8	5574.5503569245
ontime9	5153.2233008146
l1events	1413800

### 2.1.4 Events

	ccd 4	ccd 5	ccd 6	ccd 7	ccd 8	ccd 9
level 1 events	182755	287001	212886	306540	227397	197221
rejected events	39965	61498	42376	57496	47901	40724
rejected %	21%	21%	19%	18%	21%	20%

	ccd 4	ccd 5	ccd 6	ccd 7	ccd 8	ccd 9
grade 0 events	82571	28547	92845	44510	97563	86093
	45%	9%	43%	14%	42%	43%
grade 1 events	656	204	534	110	541	543
	0%	0%	0%	0%	0%	0%
grade 2 events	22776	103348	29488	74381	31424	26789
	12%	36%	13%	24%	13%	13%
grade 3 events	9524	7547	10685	18258	11934	10077
	5%	2%	5%	5%	5%	5%
grade 4 events	9536	7554	10582	18249	11793	10138
	5%	2%	4%	5%	5%	5%
grade 5 events	2367	6289	2679	7150	3299	2824
	1%	2%	1%	2%	1%	1%
grade 6 events	18480	78615	27029	93755	26948	23512
	10%	27%	12%	30%	11%	11%
grade 7 events	36845	54897	39044	50127	43895	37245
	20%	19%	18%	16%	19%	18%

## 2.2 Compared Parameters

Parameter	Planned	Actual	Parameter	Planned	Actual
Instrument	ACIS	ACIS	Obspar format version number	6	6
Detector	ACIS-456789	ACIS-456789	Obspar file type	PREDICTED	ACTUAL
Grating	NONE	NONE	Obspar update status	NONE	UPDATED
Data mode	FAINT	FAINT	On-chip summing requested	N	N
Observation mode	SECONDARY	SECONDARY	Subarray requested	NONE	NONE
Pointing RA	0	299.9714048546125	Alternating exposures requested	N	N
Pointing Dec	0	-4.993920666712025	Primary exposure time	3.2	3.2
Pointing Roll	0.0	137.4651548398158			
SIM focus pos (mm)	-0.684267	-0.6828225247311905			
SIM defocus (mm)	0	0.8505141146731063			
SIM translation stage pos (mm)	-190.132523	250.4635187648994			
SIM translation stage offset (mm)	0	-0.007540371344731511			
Observation start time	205153277.632032	205153276.60703			
Observation start date	2004-07-02T11:01:18	2004-07-02T11:01:16			
Observation end time	205188701.633603	205188700.6086			
Observation end date	2004-07-02T20:51:42	2004-07-02T20:51:40			
Read mode	TIMED	TIMED			

## 2.3 Aspect



## **2.4 Star Slots**

## **2.5 FID Slots**

## A Summary

### A.1 Status

V&V Scientist	Jen Lauer
V&V Date (YYYY-MM-DD)	2006.04.30
V&V Edition	1
V&V Disposition and Status	OK
V&V Charge Time	7.79787355

### A.2 Comments