

V&V Reference Report

L2 ASCDS Version : 7.6.7.2

Observation 60156 - L2 Version 001
Chandra X-Ray Center

L2 Processing Date : Apr 29 2006

Contents

1	Front	2
2	OBI	3
2.1	OBI	3
2.1.1	Images	3
2.1.2	Bias	3
2.1.3	Parameters	4
2.1.4	Events	4
2.2	Compared Parameters	5
2.3	Aspect	6
2.4	Star Slots	8
2.5	FID Slots	8
A	Summary	9
A.1	Status	9
A.2	Comments	9

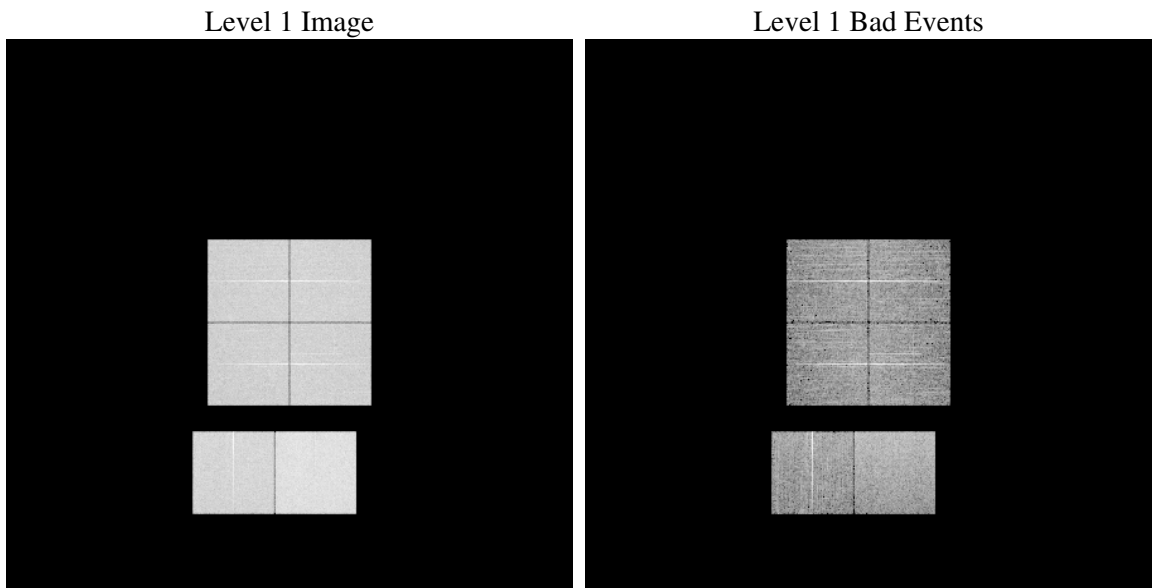
1 Front

seq_num	
obs_id	60156
title	ACIS-012367 diagnostics
observer	CHANDRA engineering request/realtime commanding
object	
dtcycle	0
cycle	P
ra_targ	0.0
dec_targ	0.0
ra_nom	302.00945830531
dec_nom	-44.570307227676
roll_nom	43.3711913157
revision	2
ontime	8275.1999691725
livetime	8170.4144044356
ontime0	6071.3381741345
ontime1	6230.1456696391
ontime2	5753.721801579
ontime3	5925.4935354292
ontime6	6405.157866776
ontime7	8275.1999691725
l2events	1150094

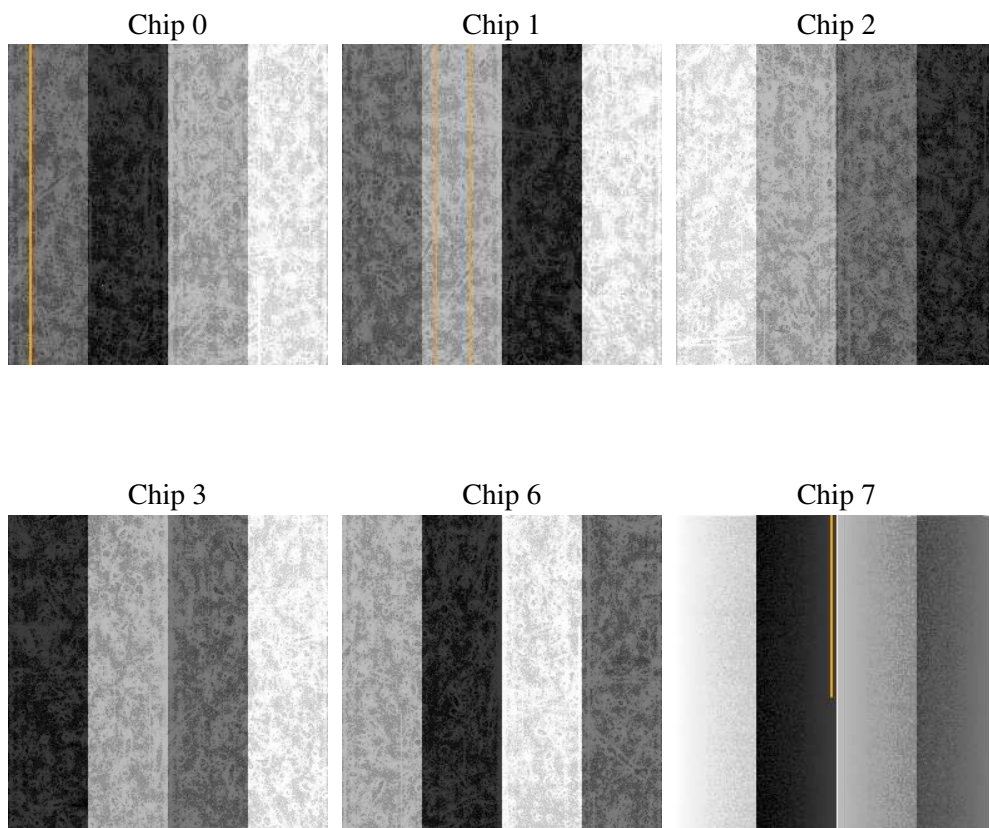
2 OBI

2.1 OBI

2.1.1 Images



2.1.2 Bias



2.1.3 Parameters

obi_num	1
ascdsver	7.6.7.2
caldbver	3.2.1
date	2006-04-29T21:20:30
revision	2

sched_exp_time	0.0
ontime	8277.5279468
ontime0	6073.666151762
ontime1	6232.4736472666
ontime2	5756.0497792065
ontime3	5927.8215130568
ontime6	6407.4858444035
ontime7	8277.5279468
l1events	1500519

2.1.4 Events

	ccd 0	ccd 1	ccd 2	ccd 3	ccd 6	ccd 7
level 1 events	230493	236397	220974	229512	254566	328577
rejected events	45315	45247	44170	46551	49219	63830
rejected %	19%	19%	19%	20%	19%	19%

	ccd 0	ccd 1	ccd 2	ccd 3	ccd 6	ccd 7
grade 0 events	101639	104099	98800	102553	111032	44243
	44%	44%	44%	44%	43%	13%
grade 1 events	641	547	657	681	622	134
	0%	0%	0%	0%	0%	0%
grade 2 events	32432	34117	29527	30928	35709	81063
	14%	14%	13%	13%	14%	24%
grade 3 events	12002	12443	11608	12025	12691	18416
	5%	5%	5%	5%	4%	5%
grade 4 events	11918	12042	11582	11834	12614	18357
	5%	5%	5%	5%	4%	5%
grade 5 events	2830	2930	2639	2933	3208	7393
	1%	1%	1%	1%	1%	2%
grade 6 events	27306	28556	25396	25739	33411	102789
	11%	12%	11%	11%	13%	31%
grade 7 events	41725	41663	40765	42819	45279	56182
	18%	17%	18%	18%	17%	17%

2.2 Compared Parameters

Parameter	Planned	Actual	Parameter	Planned	Actual
Instrument	ACIS	ACIS	Obspar format version number	6	6
Detector	ACIS-012367	ACIS-012367	Obspar file type	PREDICTED	ACTUAL
Grating	NONE	NONE	Obspar update status	NONE	UPDATED
Data mode	FAINT	FAINT	On-chip summing requested	N	N
Observation mode	SECONDARY	SECONDARY	Subarray requested	NONE	NONE
Pointing RA	0	302.009458305313	Alternating exposures requested	N	N
Pointing Dec	0	-44.57030722767612	Primary exposure time	3.2	3.2
Pointing Roll	0.0	43.37119131569955			
SIM focus pos (mm)	-0.782348	-0.6828225247311905			
SIM defocus (mm)	0	0.8505141146731063			
SIM translation stage pos (mm)	-233.592463	250.4635187648994			
SIM translation stage offset (mm)	0	-0.007540371344731511			
Observation start time	205188701.633603	205188700.6086			
Observation start date	2004-07-02T20:51:42	2004-07-02T20:51:40			
Observation end time	205211780.534626	205211779.50963			
Observation end date	2004-07-03T03:16:21	2004-07-03T03:16:19			
Read mode	TIMED	TIMED			

2.3 Aspect

2.4 Star Slots

2.5 FID Slots

A Summary

A.1 Status

V&V Scientist	Jen Lauer
V&V Date (YYYY-MM-DD)	2006.04.30
V&V Edition	1
V&V Disposition and Status	OK
V&V Charge Time	8.27519996

A.2 Comments

The ACIS focal plane temperature decreases by more than a degree over the course of the observation.