

V&V Reference Report

L2 ASCDS Version : 8.4.5

Observation 60154 - L2 Version 3
Chandra X-Ray Center

L2 Processing Date : Dec 3 2012

Contents

1	Front	2
2	OBI	3
2.1	OBI	3
2.1.1	Images	3
2.1.2	Bias	3
2.1.3	Parameters	4
2.1.4	Events	4
2.2	Compared Parameters	5
2.3	Star Slots	6
2.4	FID Slots	6
A	Summary	7
A.1	Status	7
A.2	Comments	7

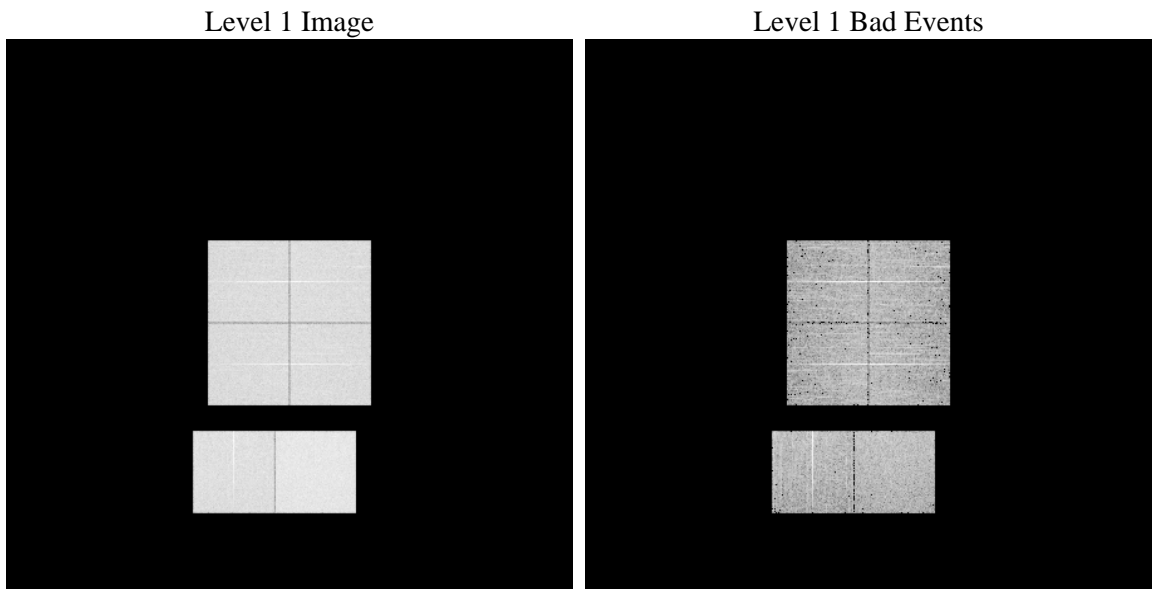
1 Front

seq_num	 	Sequence number
obs_id	60154	Observation id
title	ACIS-012367 diagnostics	Proposal title
observer	CHANDRA engineering request/realtime commanding	Principal investig
object	 	Source name
dtcycle	0	
cycle	P	events from which exps? Prim/Second/Both
ra_targ	0.0	Observer's specified target RA [deg]
dec_targ	0.0	Observer's specified target Dec [deg]
ra_nom	289.99128575243	Nominal RA [deg]
dec_nom	-24.372510081321	Nominal Dec [deg]
roll_nom	73.291166390918	Nominal Roll [deg]
revision	3	Processing version of data
ontime	6150.399977088	Sum of GTIs [s]
livetime	6072.5199092518	Livetime [s]
ontime0	4550.3107812405	Sum of GTIs [s]
ontime1	4670.2677409053	Sum of GTIs [s]
ontime2	4429.4365614355	Sum of GTIs [s]
ontime3	4527.5421179235	Sum of GTIs [s]
ontime6	4900.4083124101	Sum of GTIs [s]
ontime7	6150.399977088	Sum of GTIs [s]
l2events	868694	Number of level 2 events

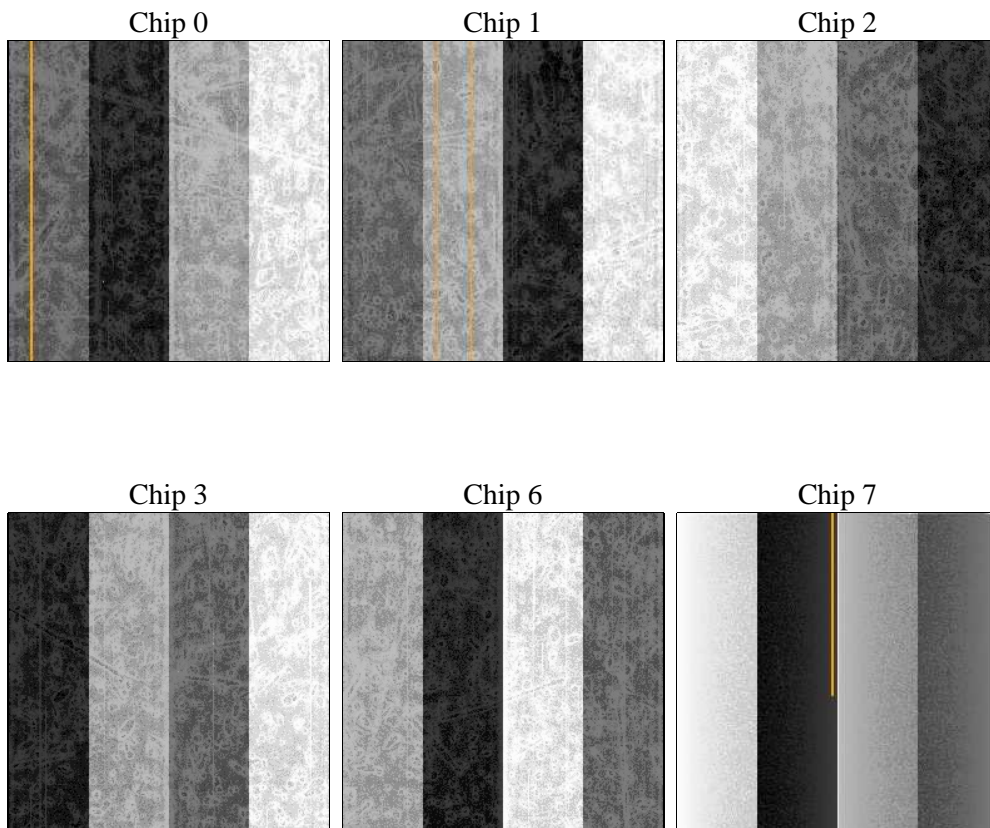
2 OBI

2.1 OBI

2.1.1 Images



2.1.2 Bias



2.1.3 Parameters

obi_num	1	Obi number	sched_exp_time	0.0	[s] Scheduled observation exposure time
ascdsver	8.4.5	Processing system revision	ontime	6150.399977088	Sum of GTIs [s]
caldsver	4.5.2	 	ontime0	4550.3107812405	Sum of GTIs [s]
date	2012-12-03T20:41:17	Date and time of file creation	ontime1	4670.2677409053	Sum of GTIs [s]
revision	3	Processing version of data	ontime2	4429.4365614355	Sum of GTIs [s]
			ontime3	4527.5421179235	Sum of GTIs [s]
			ontime6	4900.4083124101	Sum of GTIs [s]
			ontime7	6150.399977088	Sum of GTIs [s]
			l1events	1120161	Number of level 1 events

2.1.4 Events

	ccd 0	ccd 1	ccd 2	ccd 3	ccd 6	ccd 7		ccd 0	ccd 1	ccd 2	ccd 3	ccd 6	ccd 7
level 1 events	169826	176022	167196	172174	191900	243043	grade 0 events	75073	76870	75131	77309	83934	50022
rejected events	32659	34801	32698	34142	36869	37514		44%	43%	44%	44%	43%	20%
rejected %	19%	19%	19%	19%	19%	15%	grade 1 events	469	395	507	511	441	141
								0%	0%	0%	0%	0%	0%
							grade 2 events	24189	25016	22655	23596	26742	45057
								14%	14%	13%	13%	13%	18%
							grade 3 events	8956	9004	8814	8975	9563	20604
								5%	5%	5%	5%	4%	8%
							grade 4 events	8885	9089	8862	8915	9731	20098
								5%	5%	5%	5%	5%	8%
							grade 5 events	2095	2184	1987	2241	2462	6777
								1%	1%	1%	1%	1%	2%
							grade 6 events	20064	21242	19036	19237	25061	69748
								11%	12%	11%	11%	13%	28%
							grade 7 events	30095	32222	30204	31390	33966	30596
								17%	18%	18%	18%	17%	12%

2.2 Compared Parameters

Parameter	Planned	Actual
Instrument	ACIS	ACIS
Detector	ACIS-012367	ACIS-012367
Grating	NONE	NONE
Data mode	FAINT	FAINT
Observation mode	SECONDARY	SECONDARY
[deg] Pointing RA	0	289.9912857524259
[deg] Pointing Dec	0	-24.37251008132053
[deg] Pointing Roll	0.0	73.29116639091794
[mm] SIM focus pos	-0.782348	-0.6828225247311905
[mm] SIM defocus	0	0.8505141146731063
[mm] SIM translation stage pos	-233.592463	250.466033080201
[mm] SIM translation stage offset	0	-0.01005468664627074
[s] Observation start time (MET)	205377947.391994	205377946.36699
Observation start date	2004-07-05T01:25:47	2004-07-05T01:25:46
[s] Observation end time (MET)	205396659.792823	205396658.76782
Observation end date	2004-07-05T06:37:40	2004-07-05T06:37:38
Read mode	TIMED	TIMED

Parameter	Planned	Actual
Obspar format version number	7	7
Obspar file type	PREDICTED	ACTUAL
Obspar update status	NONE	UPDATED
On-chip summing requested	N	N
Subarray requested	NONE	NONE
Alternating exposures requested	N	N
[s] Primary exposure time	3.2	3.2

2.3 Star Slots

2.4 FID Slots

A Summary

A.1 Status

V&V Scientist	Beth Sundheim
V&V Date (YYYY-MM-DD)	2012.12.26
V&V Edition	1
V&V Disposition and Status	OK
V&V Charge Time	6.150399977088

A.2 Comments