

# V&V Reference Report

## L2 ASCDS Version : 8.4.5

Observation 60144 - L2 Version 3  
Chandra X-Ray Center

L2 Processing Date : Dec 3 2012

## Contents

<b>1</b>	<b>Front</b>	<b>2</b>
<b>2</b>	<b>OBI</b>	<b>3</b>
2.1	OBI . . . . .	3
2.1.1	Images . . . . .	3
2.1.2	Bias . . . . .	3
2.1.3	Parameters . . . . .	4
2.1.4	Events . . . . .	4
2.2	Compared Parameters . . . . .	5
2.3	Star Slots . . . . .	6
2.4	FID Slots . . . . .	6
<b>A</b>	<b>Summary</b>	<b>7</b>
A.1	Status . . . . .	7
A.2	Comments . . . . .	7

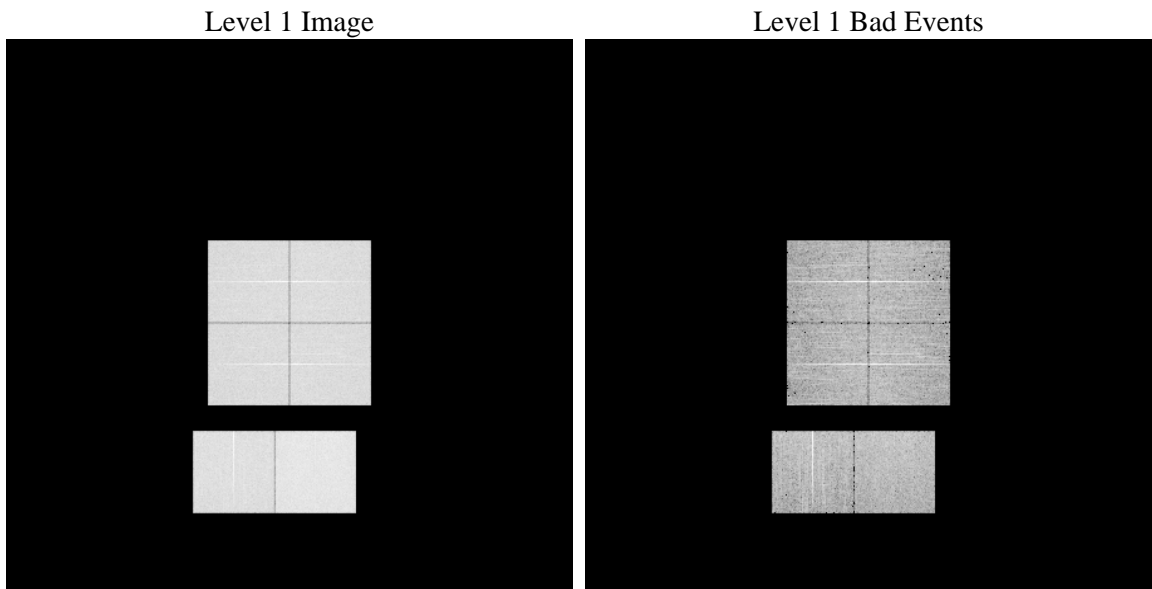
# 1 Front

seq_num	&#160	Sequence number
obs_id	60144	Observation id
title	ACIS-012367 diagnostics	Proposal title
observer	CHANDRA engineering request/realtime commanding	Principal investig
object	&#160	Source name
dtcycle	0	&#160
cycle	P	events from which exps? Prim/Second/Both
ra_targ	0.0	Observer's specified target RA [deg]
dec_targ	0.0	Observer's specified target Dec [deg]
ra_nom	273.99606515776	Nominal RA [deg]
dec_nom	-14.026588277406	Nominal Dec [deg]
roll_nom	235.15707939637	Nominal Roll [deg]
revision	3	Processing version of data
ontime	8278.3999691606	Sum of GTIs [s]
livetime	8173.573884097	Livetime [s]
ontime0	6314.3719461262	Sum of GTIs [s]
ontime1	6440.7695780694	Sum of GTIs [s]
ontime2	6019.4432210922	Sum of GTIs [s]
ontime3	6123.1547093987	Sum of GTIs [s]
ontime6	6745.4210937917	Sum of GTIs [s]
ontime7	8278.3999691606	Sum of GTIs [s]
l2events	1147379	Number of level 2 events

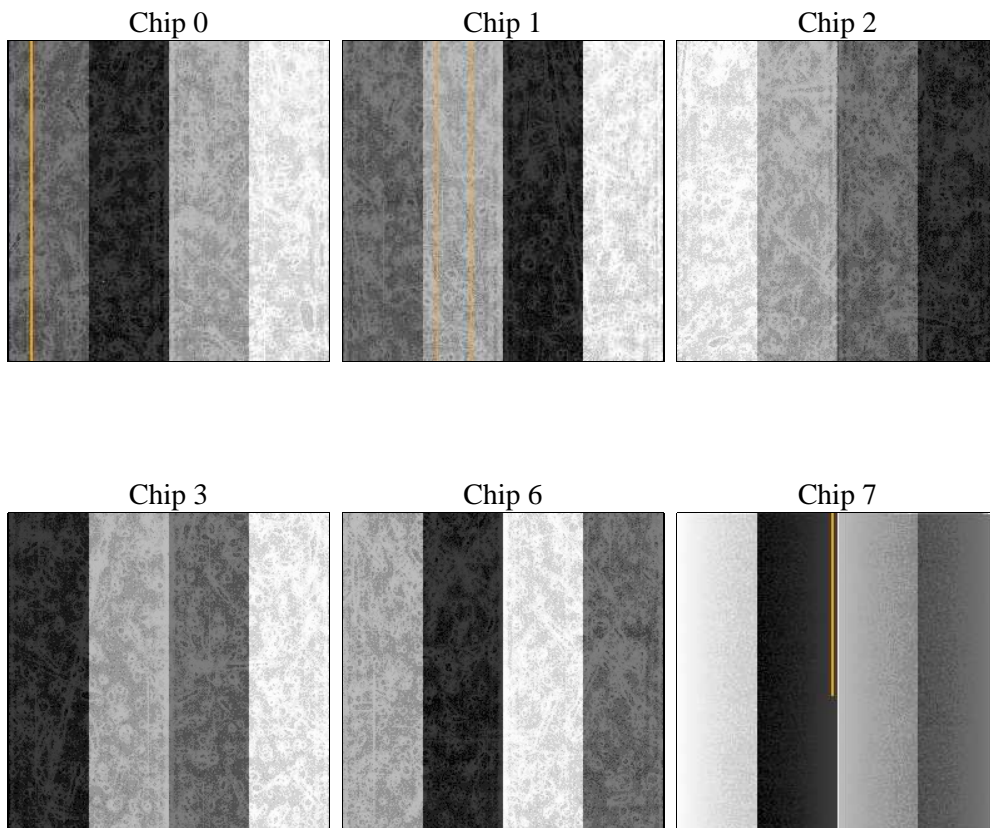
## 2 OBI

### 2.1 OBI

#### 2.1.1 Images



#### 2.1.2 Bias



### 2.1.3 Parameters

obi_num	1	Obi number	sched_exp_time	0.0	[s] Scheduled observation exposure time
ascdsver	8.4.5	Processing system revision	ontime	8278.3999691606	Sum of GTIs [s]
caldbver	4.5.2	&#160	ontime0	6314.3719461262	Sum of GTIs [s]
date	2012-12-03T21:45:42	Date and time of file creation	ontime1	6440.7695780694	Sum of GTIs [s]
revision	3	Processing version of data	ontime2	6019.4432210922	Sum of GTIs [s]
			ontime3	6123.1547093987	Sum of GTIs [s]
			ontime6	6745.4210937917	Sum of GTIs [s]
			ontime7	8278.3999691606	Sum of GTIs [s]
			l1events	1499206	Number of level 1 events

### 2.1.4 Events

	ccd 0	ccd 1	ccd 2	ccd 3	ccd 6	ccd 7		ccd 0	ccd 1	ccd 2	ccd 3	ccd 6	ccd 7
level 1 events	230542	236558	223280	230390	258549	319887	grade 0 events	102225	102831	100087	102247	111608	63324
rejected events	46439	47847	45826	48973	52989	52860		44%	43%	44%	44%	43%	19%
rejected %	20%	20%	20%	21%	20%	16%	grade 1 events	626	496	617	642	554	209
								0%	0%	0%	0%	0%	0%
							grade 2 events	31680	33831	29060	30188	35603	58810
								13%	14%	13%	13%	13%	18%
							grade 3 events	11863	12018	11504	11850	12470	26437
								5%	5%	5%	5%	4%	8%
							grade 4 events	11774	11820	11745	12023	12664	25994
								5%	4%	5%	5%	4%	8%
							grade 5 events	2886	3042	2585	3005	3330	9305
								1%	1%	1%	1%	1%	2%
							grade 6 events	26561	28211	25058	25109	33215	92462
								11%	11%	11%	10%	12%	28%
							grade 7 events	42927	44309	42624	45326	49105	43346
								18%	18%	19%	19%	18%	13%

## 2.2 Compared Parameters

Parameter	Planned	Actual	Parameter	Planned	Actual
Instrument	ACIS	ACIS	Obspar format version number	7	7
Detector	ACIS-012367	ACIS-012367	Obspar file type	PREDICTED	ACTUAL
Grating	NONE	NONE	Obspar update status	NONE	UPDATED
Data mode	FAINT	FAINT	On-chip summing requested	N	N
Observation mode	SECONDARY	SECONDARY	Subarray requested	NONE	NONE
[deg] Pointing RA	0	273.9960651577589	Alternating exposures requested	N	N
[deg] Pointing Dec	0	-14.02658827740606	[s] Primary exposure time	3.2	3.2
[deg] Pointing Roll	0.0	235.1570793963716			
[mm] SIM focus pos	-0.782348	-0.6828225247311905			
[mm] SIM defocus	0	0.8505141146731063			
[mm] SIM translation stage pos	-233.592463	250.466033080201			
[mm] SIM translation stage offset	0	-0.01005468664627074			
[s] Observation start time (MET)	205652200.504163	205652199.47915			
Observation start date	2004-07-08T05:36:41	2004-07-08T05:36:39			
[s] Observation end time (MET)	205671117.905003	205671116.87999			
Observation end date	2004-07-08T10:51:58	2004-07-08T10:51:56			
Read mode	TIMED	TIMED			

## 2.3 Star Slots

## 2.4 FID Slots

## A Summary

### A.1 Status

V&V Scientist	Beth Sundheim
V&V Date (YYYY-MM-DD)	2012.12.10
V&V Edition	1
V&V Disposition and Status	OK
V&V Charge Time	8.2783999691606

### A.2 Comments