

V&V Reference Report

L2 ASCDS Version : 7.6.7.2

Observation 60130 - L2 Version 001
Chandra X-Ray Center

L2 Processing Date : Apr 28 2006

Contents

1	Front	2
2	OBI	3
2.1	OBI	3
2.1.1	Images	3
2.1.2	Bias	3
2.1.3	Parameters	4
2.1.4	Events	4
2.2	Compared Parameters	5
2.3	Aspect	6
2.4	Star Slots	8
2.5	FID Slots	8
A	Summary	9
A.1	Status	9
A.2	Comments	9

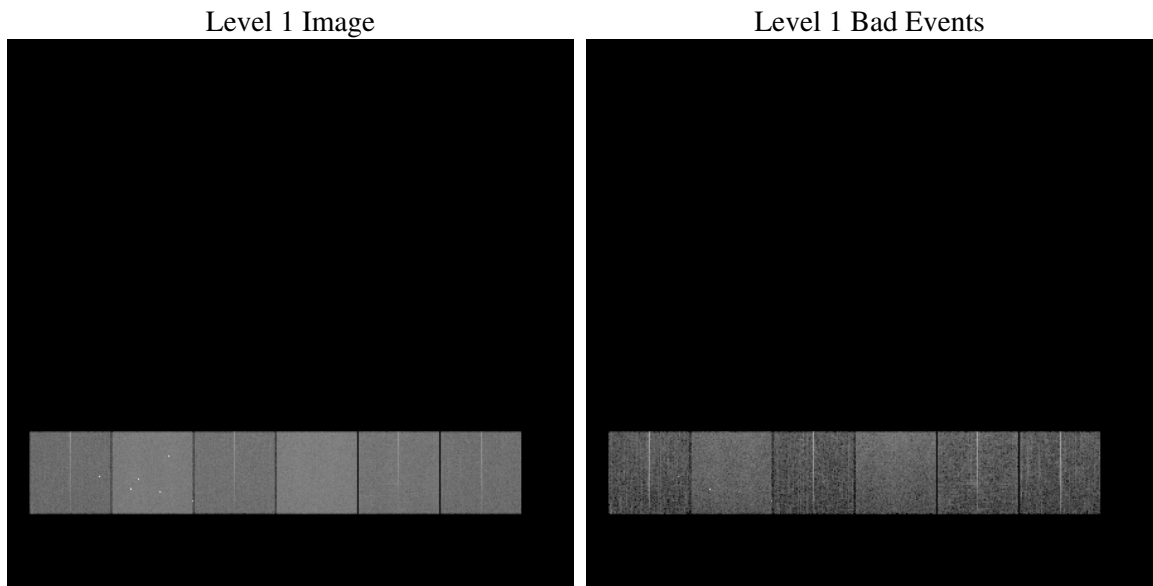
1 Front

seq_num	
obs_id	60130
title	ACIS-456789 diagnostics
observer	CHANDRA engineering request/realtime commanding
object	
dtcycle	0
cycle	P
ra_targ	0.0
dec_targ	0.0
ra_nom	315.97139294213
dec_nom	-0.9958103033427
roll_nom	137.31475724696
revision	2
ontime	8182.3999695182
livetime	8078.7894942544
ontime4	5340.6628181636
ontime5	8182.3999695182
ontime6	5891.0320848823
ontime7	8182.3999695182
ontime8	6114.6604196429
ontime9	5632.1869898438
l2events	1107303

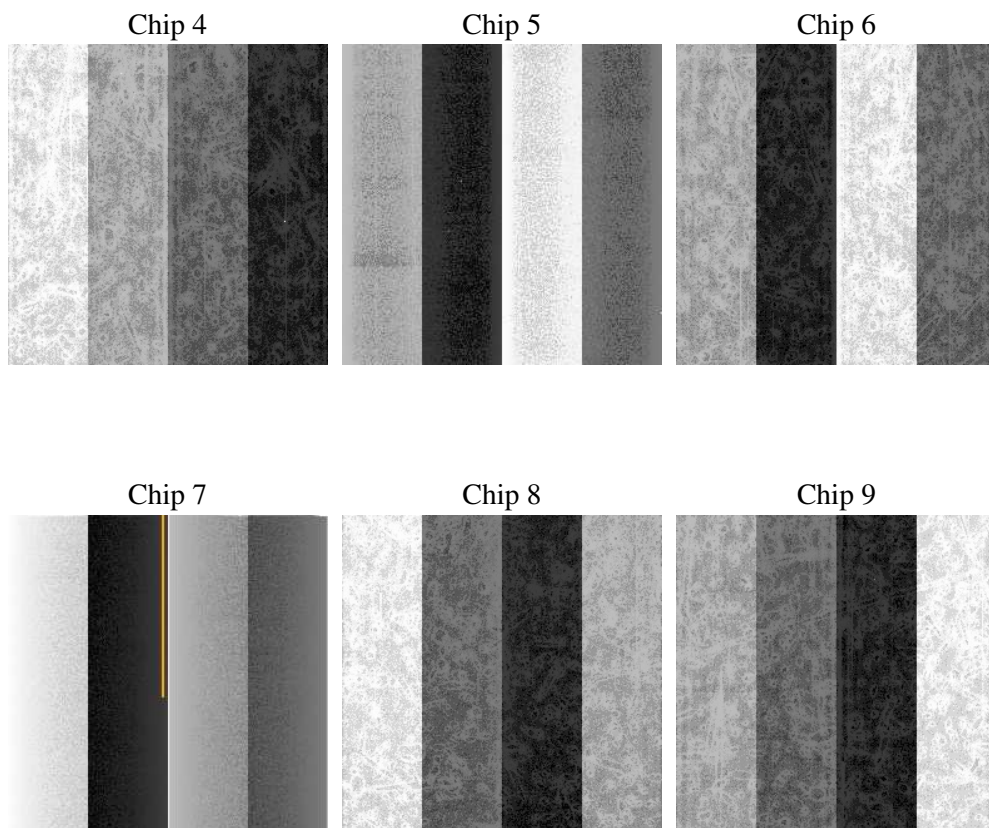
2 OBI

2.1 OBI

2.1.1 Images



2.1.2 Bias



2.1.3 Parameters

obi_num	0
ascdsver	7.6.7.2
caldbver	3.2.1
date	2006-04-28T08:55:58
revision	2

sched_exp_time	0.0
ontime	8280.7646976709
ontime4	5422.2251210809
ontime5	8280.7646976709
ontime6	5956.9870503247
ontime7	8280.7646976709
ontime8	6187.0973654687
ontime9	5697.7086012363
l1events	1498589

2.1.4 Events

	ccd 4	ccd 5	ccd 6	ccd 7	ccd 8	ccd 9
level 1 events	198824	302743	225481	314480	244917	212144
rejected events	46169	67329	44457	62881	51873	45873
rejected %	23%	22%	19%	19%	21%	21%

	ccd 4	ccd 5	ccd 6	ccd 7	ccd 8	ccd 9
grade 0 events	90537	31402	99730	43593	106097	92952
	45%	10%	44%	13%	43%	43%
grade 1 events	699	172	510	122	558	590
	0%	0%	0%	0%	0%	0%
grade 2 events	24480	109638	31606	77276	34581	28706
	12%	36%	14%	24%	14%	13%
grade 3 events	10211	7224	11386	17799	12817	10880
	5%	2%	5%	5%	5%	5%
grade 4 events	10240	7125	11355	17661	12841	10632
	5%	2%	5%	5%	5%	5%
grade 5 events	2515	6647	2870	7098	3565	3077
	1%	2%	1%	2%	1%	1%
grade 6 events	19579	82818	28963	98262	28989	24978
	9%	27%	12%	31%	11%	11%
grade 7 events	40563	57717	39061	52669	45469	40329
	20%	19%	17%	16%	18%	19%

2.2 Compared Parameters

Parameter	Planned	Actual	Parameter	Planned	Actual
Instrument	ACIS	ACIS	Obspar format version number	6	6
Detector	ACIS-456789	ACIS-456789	Obspar file type	PREDICTED	ACTUAL
Grating	NONE	NONE	Obspar update status	NONE	UPDATED
Data mode	FAINT	FAINT	On-chip summing requested	N	N
Observation mode	SECONDARY	SECONDARY	Subarray requested	NONE	NONE
Pointing RA	0	315.9713929421272	Alternating exposures requested	N	N
Pointing Dec	0	-0.9958103033427044	Primary exposure time	3.2	3.2
Pointing Roll	0.0	137.3147572469582			
SIM focus pos (mm)	-0.684267	-0.6828225247311905			
SIM defocus (mm)	0	0.8505141146731063			
SIM translation stage pos (mm)	-190.132523	250.466033080201			
SIM translation stage offset (mm)	0	-0.01005468664627074			
Observation start time	206334813.634416	206334812.60945			
Observation start date	2004-07-16T03:13:34	2004-07-16T03:13:32			
Observation end time	206356781.43539	206356780.41043			
Observation end date	2004-07-16T09:19:41	2004-07-16T09:19:40			
Read mode	TIMED	TIMED			

2.3 Aspect

2.4 Star Slots

2.5 FID Slots

A Summary

A.1 Status

V&V Scientist	Jen Lauer
V&V Date (YYYY-MM-DD)	2006.04.28
V&V Edition	1
V&V Disposition and Status	OK
V&V Charge Time	8.18239996

A.2 Comments