

V&V Reference Report

L2 ASCDS Version : 7.6.7.2

Observation 60125 - L2 Version 001
Chandra X-Ray Center

L2 Processing Date : Apr 28 2006

Contents

1	Front	2
2	OBI	3
2.1	OBI	3
2.1.1	Images	3
2.1.2	Bias	3
2.1.3	Parameters	4
2.1.4	Events	4
2.2	Compared Parameters	5
2.3	Aspect	6
2.4	Star Slots	8
2.5	FID Slots	8
A	Summary	9
A.1	Status	9
A.2	Comments	9

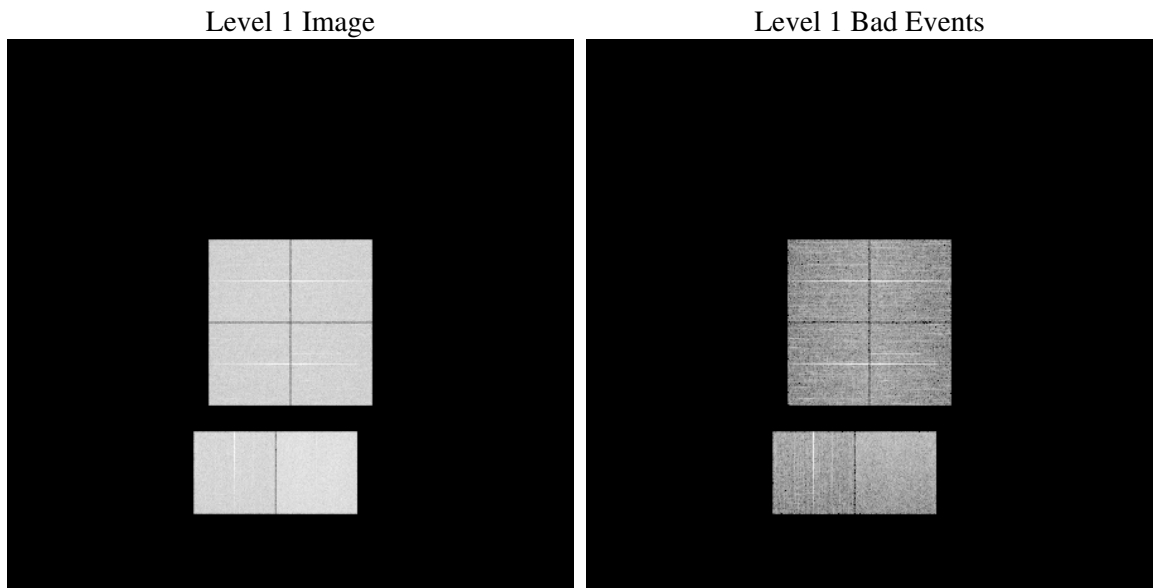
1 Front

seq_num	
obs_id	60125
title	ACIS-012367 diagnostics
observer	CHANDRA engineering request/realtime commanding
object	
dtcycle	0
cycle	P
ra_targ	0.0
dec_targ	0.0
ra_nom	327.97904926147
dec_nom	-17.980082473676
roll_nom	100.85891533986
revision	2
ontime	8182.3999695182
livetime	8078.7894942544
ontime0	6286.4303924739
ontime1	6412.8285519779
ontime2	6080.1375700533
ontime3	6166.513525337
ontime6	6614.9080040455
ontime7	8182.3999695182
l2events	1133325

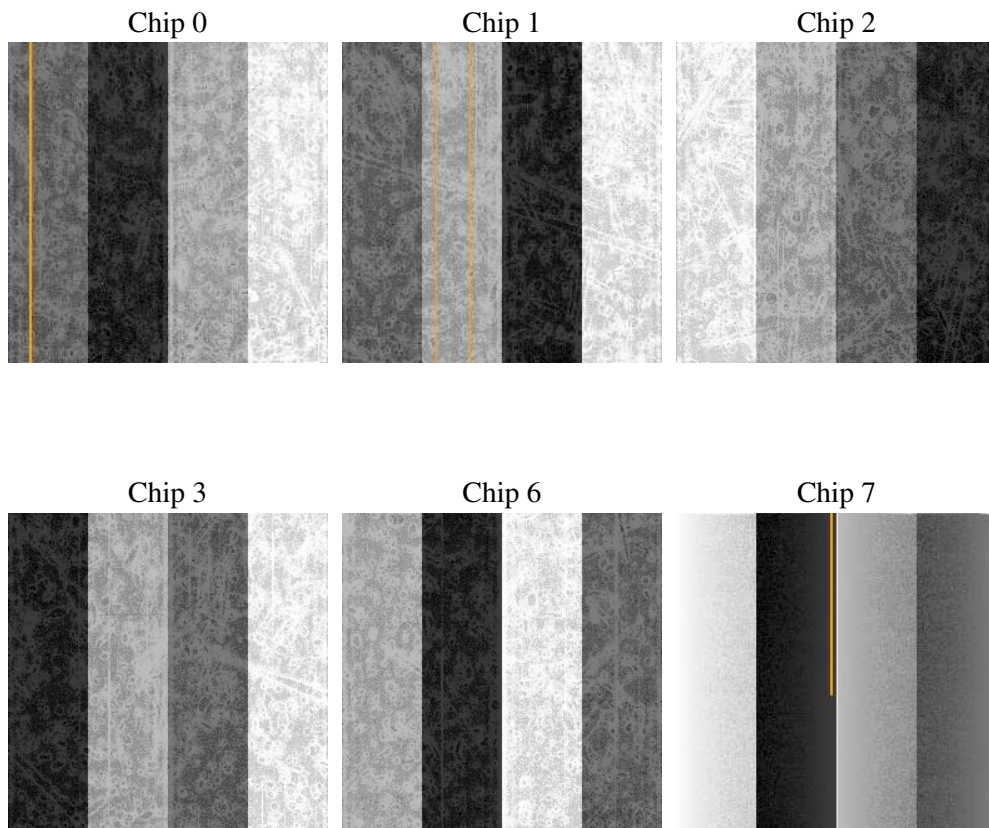
2 OBI

2.1 OBI

2.1.1 Images



2.1.2 Bias



2.1.3 Parameters

obi_num	0
ascdsver	7.6.7.2
caldbver	3.2.1
date	2006-04-28T09:26:53
revision	2

sched_exp_time	0.0
ontime	8284.0102677047
ontime0	6362.1128783524
ontime1	6491.7520578802
ontime2	6148.2080908716
ontime3	6238.95501104
ontime6	6692.692456156
ontime7	8284.0102677047
l1events	1499223

2.1.4 Events

	ccd 0	ccd 1	ccd 2	ccd 3	ccd 6	ccd 7
level 1 events	231332	235976	227195	232629	255763	316328
rejected events	46643	47640	47756	49461	52912	65302
rejected %	20%	20%	21%	21%	20%	20%

	ccd 0	ccd 1	ccd 2	ccd 3	ccd 6	ccd 7
grade 0 events	102952	103988	101981	104388	110878	42134
	44%	44%	44%	44%	43%	13%
grade 1 events	551	491	639	630	538	136
	0%	0%	0%	0%	0%	0%
grade 2 events	32642	34519	30229	31284	35772	78149
	14%	14%	13%	13%	13%	24%
grade 3 events	11978	12033	11859	11975	12635	17644
	5%	5%	5%	5%	4%	5%
grade 4 events	11992	11927	11593	12112	12598	17348
	5%	5%	5%	5%	4%	5%
grade 5 events	2874	2931	2668	3074	3242	7111
	1%	1%	1%	1%	1%	2%
grade 6 events	27224	28142	25730	25448	33440	98775
	11%	11%	11%	10%	13%	31%
grade 7 events	41119	41945	42496	43718	46660	55031
	17%	17%	18%	18%	18%	17%

2.2 Compared Parameters

Parameter	Planned	Actual	Parameter	Planned	Actual
Instrument	ACIS	ACIS	Obspar format version number	6	6
Detector	ACIS-012367	ACIS-012367	Obspar file type	PREDICTED	ACTUAL
Grating	NONE	NONE	Obspar update status	NONE	UPDATED
Data mode	FAINT	FAINT	On-chip summing requested	N	N
Observation mode	SECONDARY	SECONDARY	Subarray requested	NONE	NONE
Pointing RA	0	327.9790492614651	Alternating exposures requested	N	N
Pointing Dec	0	-17.98008247367601	Primary exposure time	3.2	3.2
Pointing Roll	0.0	100.8589153398594			
SIM focus pos (mm)	-0.782348	-0.7809083437167272			
SIM defocus (mm)	0	0.7524282956875696			
SIM translation stage pos (mm)	-233.592463	250.466033080201			
SIM translation stage offset (mm)	0	-0.01005468664627074			
Observation start time	206559321.444416	206559320.41942			
Observation start date	2004-07-18T17:35:21	2004-07-18T17:35:20			
Observation end time	206581486.045401	206581485.02041			
Observation end date	2004-07-18T23:44:46	2004-07-18T23:44:45			
Read mode	TIMED	TIMED			

2.3 Aspect

2.4 Star Slots

2.5 FID Slots

A Summary

A.1 Status

V&V Scientist	Jen Lauer
V&V Date (YYYY-MM-DD)	2006.04.28
V&V Edition	1
V&V Disposition and Status	OK
V&V Charge Time	8.18239996

A.2 Comments

The ACIS focal plane temperature was above calibration limits for the entire observation, and decreased by more than one degree over the course of the observation.