

V&V Reference Report

L2 ASCDS Version : 7.6.7.2

Observation 60111 - L2 Version 001
Chandra X-Ray Center

L2 Processing Date : Apr 26 2006

Contents

1	Front	2
2	OBI	3
2.1	OBI	3
2.1.1	Images	3
2.1.2	Bias	3
2.1.3	Parameters	4
2.1.4	Events	4
2.2	Compared Parameters	5
2.3	Aspect	6
2.4	Star Slots	8
2.5	FID Slots	8
A	Summary	9
A.1	Status	9
A.2	Comments	9

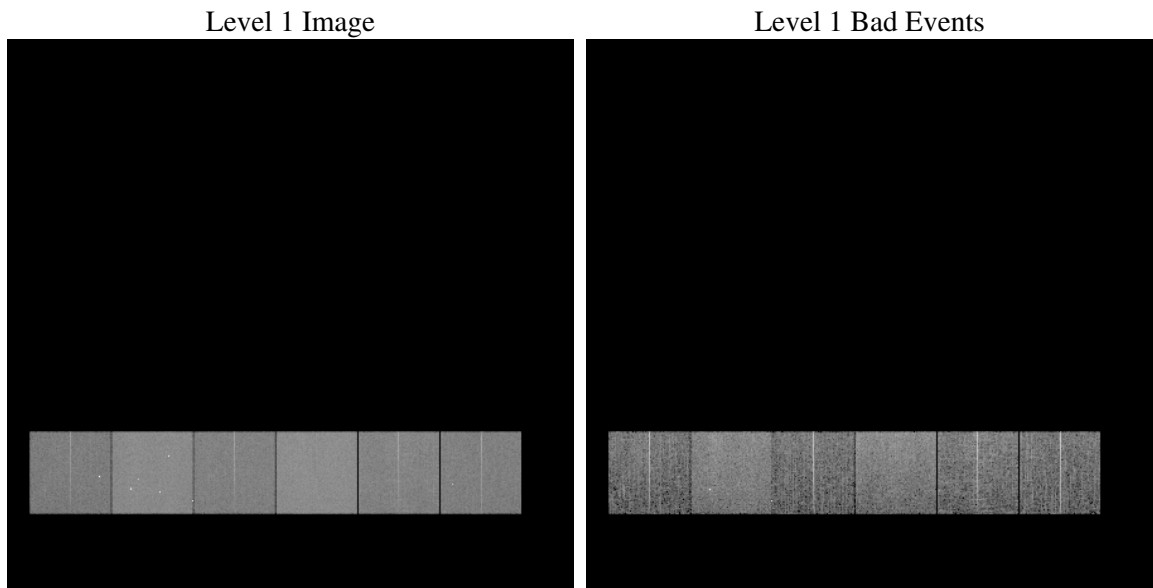
1 Front

seq_num	
obs_id	60111
title	ACIS-456789 diagnostics
observer	CHANDRA engineering request/realtime commanding
object	
dtcycle	0
cycle	P
ra_targ	0.0
dec_targ	0.0
ra_nom	0.086597544259646
dec_nom	0.11575245600285
roll_nom	113.53837991033
revision	2
ontime	7976.6943227649
livetime	7875.6886162613
ontime4	5358.1183701754
ontime5	7976.7353627682
ontime6	5876.6327208877
ontime7	7976.6943227649
ontime8	5986.9074009657
ontime9	5743.6298990846
l2events	1081243

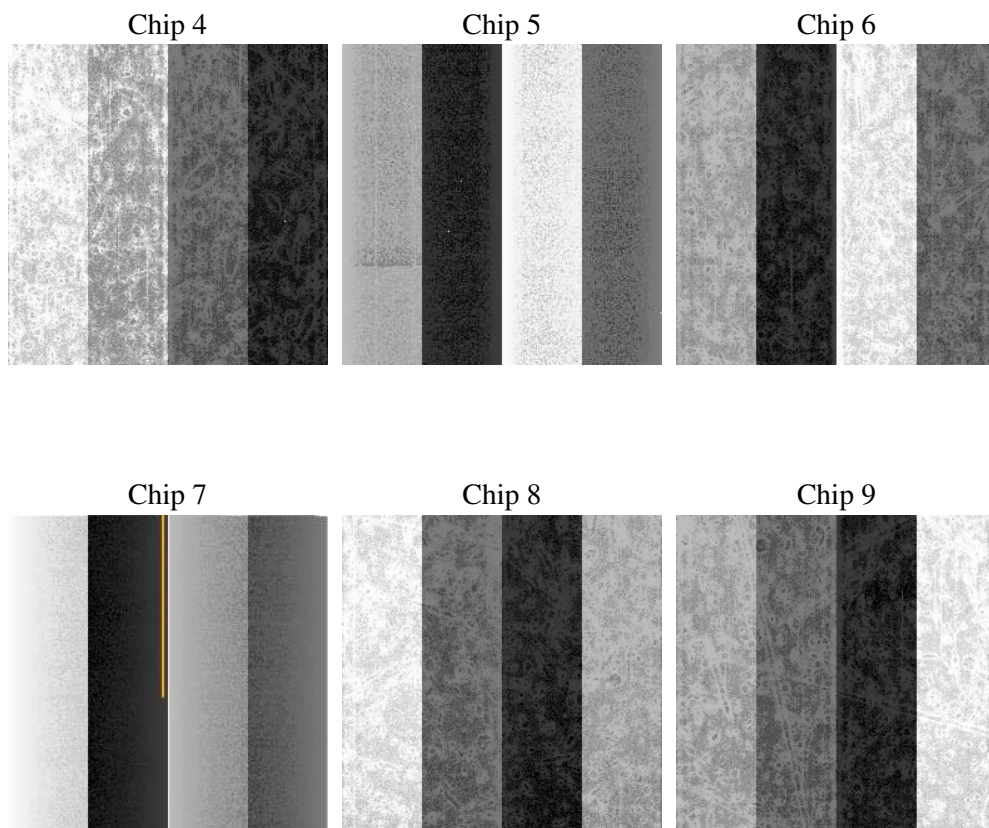
2 OBI

2.1 OBI

2.1.1 Images



2.1.2 Bias



2.1.3 Parameters

obi_num	4
ascdsver	7.6.7.2
caldsver	3.2.1
date	2006-04-26T22:08:21
revision	2

sched_exp_time	0.0
ontime	7979.3386846483
ontime4	5360.6396120489
ontime5	7979.3386846483
ontime6	5879.1950027645
ontime7	7979.3386846483
ontime8	5989.3876028657
ontime9	5746.3153009713
l1events	1445229

2.1.4 Events

	ccd 4	ccd 5	ccd 6	ccd 7	ccd 8	ccd 9
level 1 events	193715	284780	220410	299923	234981	211420
rejected events	42002	62016	42569	58283	48431	43180
rejected %	21%	21%	19%	19%	20%	20%

	ccd 4	ccd 5	ccd 6	ccd 7	ccd 8	ccd 9
grade 0 events	89036	25509	96932	39942	101672	93580
	45%	8%	43%	13%	43%	44%
grade 1 events	699	247	467	124	498	538
	0%	0%	0%	0%	0%	0%
grade 2 events	23711	104575	30754	74380	32716	28416
	12%	36%	13%	24%	13%	13%
grade 3 events	9907	6583	10935	16671	12261	10717
	5%	2%	4%	5%	5%	5%
grade 4 events	10061	6265	11067	16444	11928	10581
	5%	2%	5%	5%	5%	5%
grade 5 events	2448	6343	2818	6825	3398	2914
	1%	2%	1%	2%	1%	1%
grade 6 events	19093	79926	28244	94289	28090	25034
	9%	28%	12%	31%	11%	11%
grade 7 events	38760	55332	39193	51248	44418	39640
	20%	19%	17%	17%	18%	18%

2.2 Compared Parameters

Parameter	Planned	Actual	Parameter	Planned	Actual
Instrument	ACIS	ACIS	Obspar format version number	6	6
Detector	ACIS-456789	ACIS-456789	Obspar file type	PREDICTED	ACTUAL
Grating	NONE	NONE	Obspar update status	NONE	UPDATED
Data mode	FAINT	FAINT	On-chip summing requested	N	N
Observation mode	SECONDARY	SECONDARY	Subarray requested	NONE	NONE
Pointing RA	0	0.08659754425964598	Alternating exposures requested	N	N
Pointing Dec	0	0.1157524560028471	Primary exposure time	3.2	3.2
Pointing Roll	0.0	113.5383799103293			
SIM focus pos (mm)	-0.684267	-0.6828225247311905			
SIM defocus (mm)	0	0.8505141146731063			
SIM translation stage pos (mm)	-190.132523	250.4635187648994			
SIM translation stage offset (mm)	0	-0.007540371344731511			
Observation start time	207717522.295891	207717521.27089			
Observation start date	2004-08-01T03:18:42	2004-08-01T03:18:41			
Observation end time	207727237.246323	207727236.22133			
Observation end date	2004-08-01T06:00:37	2004-08-01T06:00:36			
Read mode	TIMED	TIMED			

2.3 Aspect

2.4 Star Slots

2.5 FID Slots

A Summary

A.1 Status

V&V Scientist	Jen Lauer
V&V Date (YYYY-MM-DD)	2006.04.27
V&V Edition	1
V&V Disposition and Status	OK
V&V Charge Time	7.97669432

A.2 Comments

The ACIS focal plane temperature is above calibration limits for the first 6 ksec of the observation.