

V&V Reference Report

L2 ASCDS Version : 7.6.7.2

Observation 60097 - L2 Version 001
Chandra X-Ray Center

L2 Processing Date : Apr 25 2006

Contents

1	Front	2
2	OBI	3
2.1	OBI	3
2.1.1	Images	3
2.1.2	Bias	3
2.1.3	Parameters	4
2.1.4	Events	4
2.2	Compared Parameters	5
2.3	Aspect	6
2.4	Star Slots	8
2.5	FID Slots	8
A	Summary	9
A.1	Status	9
A.2	Comments	9

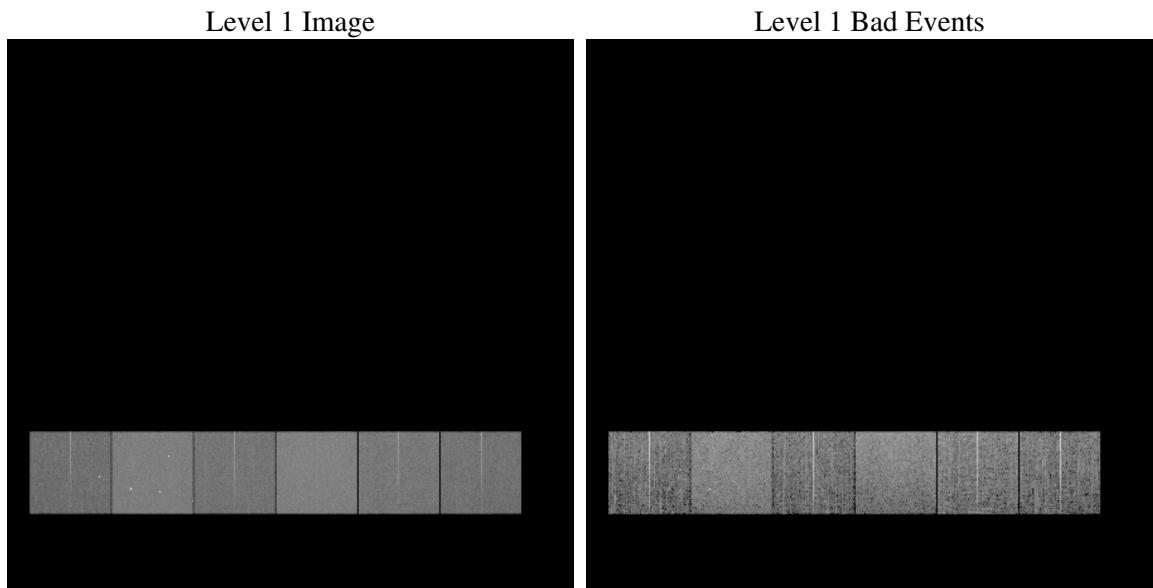
1 Front

seq_num	
obs_id	60097
title	ACIS-456789 diagnostics
observer	CHANDRA engineering request/realtime commanding
object	
dtcycle	0
cycle	P
ra_targ	0.0
dec_targ	0.0
ra_nom	318.02122679319
dec_nom	-16.019030384029
roll_nom	285.66695621225
revision	2
ontime	7801.0115123093
livetime	7702.2304073353
ontime4	5052.7543246448
ontime5	7801.0525523126
ontime6	5613.4332624078
ontime7	7801.0115123093
ontime8	5824.1084857881
ontime9	5454.5013023615
l2events	1048851

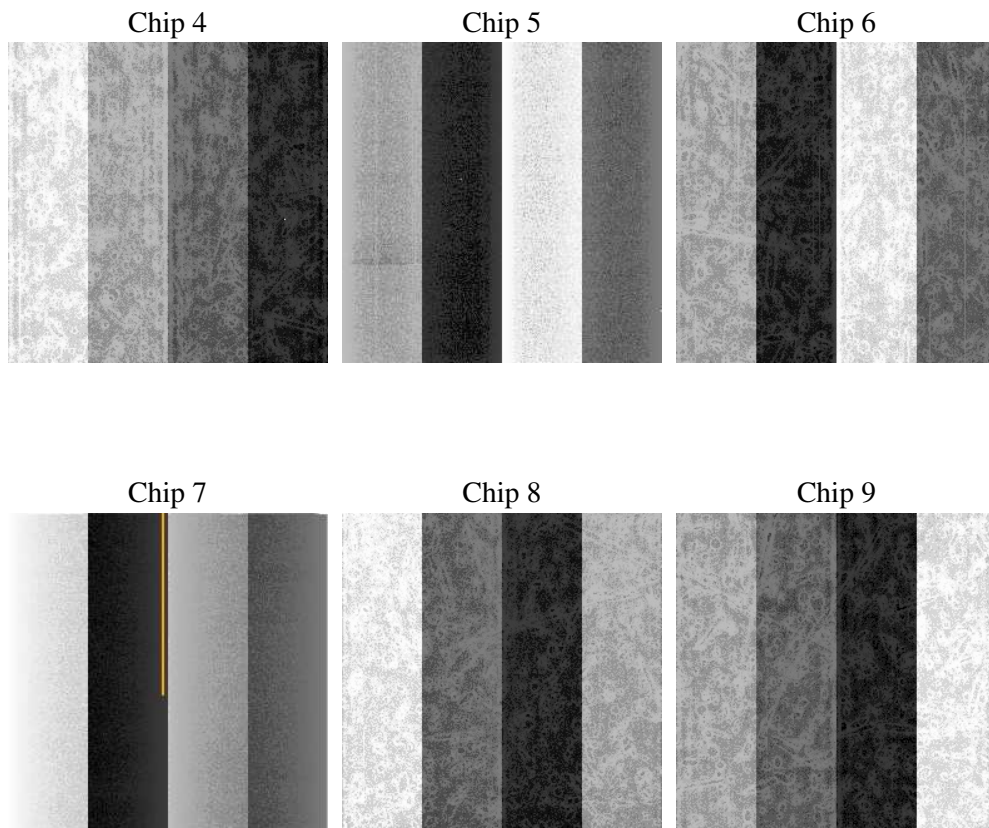
2 OBI

2.1 OBI

2.1.1 Images



2.1.2 Bias



2.1.3 Parameters

obi_num	0
ascdsver	7.6.7.2
caldsver	3.2.1
date	2006-04-25T07:26:32
revision	2

sched_exp_time	0.0
ontime	7801.1055468023
ontime4	5052.7543246448
ontime5	7801.1055468023
ontime6	5613.4452168941
ontime7	7801.1055468023
ontime8	5824.1084857881
ontime9	5454.6363768578
l1events	1412517

2.1.4 Events

	ccd 4	ccd 5	ccd 6	ccd 7	ccd 8	ccd 9
level 1 events	185179	283979	213462	297918	231451	200528
rejected events	42073	62037	43039	57411	51027	42601
rejected %	22%	21%	20%	19%	22%	21%

	ccd 4	ccd 5	ccd 6	ccd 7	ccd 8	ccd 9
grade 0 events	83260	29298	92708	42334	98094	86709
	44%	10%	43%	14%	42%	43%
grade 1 events	600	522	516	98	562	538
	0%	0%	0%	0%	0%	0%
grade 2 events	22581	101779	29474	71835	31744	27182
	12%	35%	13%	24%	13%	13%
grade 3 events	9514	7223	10622	17577	11831	10184
	5%	2%	4%	5%	5%	5%
grade 4 events	9434	7075	10606	17511	11772	10209
	5%	2%	4%	5%	5%	5%
grade 5 events	2434	6281	2877	6974	3428	2860
	1%	2%	1%	2%	1%	1%
grade 6 events	18317	76567	27013	91250	26983	23643
	9%	26%	12%	30%	11%	11%
grade 7 events	39039	55234	39646	50339	47037	39203
	21%	19%	18%	16%	20%	19%

2.2 Compared Parameters

Parameter	Planned	Actual	Parameter	Planned	Actual
Instrument	ACIS	ACIS	Obspar format version number	6	6
Detector	ACIS-456789	ACIS-456789	Obspar file type	PREDICTED	ACTUAL
Grating	NONE	NONE	Obspar update status	NONE	UPDATED
Data mode	FAINT	FAINT	On-chip summing requested	N	N
Observation mode	SECONDARY	SECONDARY	Subarray requested	NONE	NONE
Pointing RA	0	318.0212267931879	Alternating exposures requested	N	N
Pointing Dec	0	-16.01903038402945	Primary exposure time	3.2	3.2
Pointing Roll	0.0	285.6669562122466			
SIM focus pos (mm)	-0.684267	-0.6828225247311905			
SIM defocus (mm)	0	0.8505141146731063			
SIM translation stage pos (mm)	-190.132523	250.466033080201			
SIM translation stage offset (mm)	0	-0.01005468664627074			
Observation start time	208800713.644063	208800712.61906			
Observation start date	2004-08-13T16:11:54	2004-08-13T16:11:52			
Observation end time	208845959.196076	208845958.17107			
Observation end date	2004-08-14T04:45:59	2004-08-14T04:45:58			
Read mode	TIMED	TIMED			

2.3 Aspect

2.4 Star Slots

2.5 FID Slots

A Summary

A.1 Status

V&V Scientist	Jen Lauer
V&V Date (YYYY-MM-DD)	2006.04.25
V&V Edition	1
V&V Disposition and Status	OK
V&V Charge Time	7.80101151

A.2 Comments