

# V&V Reference Report

## L2 ASCDS Version : 7.6.7.2

Observation 60085 - L2 Version 001  
Chandra X-Ray Center

L2 Processing Date : Apr 25 2006

## Contents

<b>1</b>	<b>Front</b>	<b>2</b>
<b>2</b>	<b>OBI</b>	<b>3</b>
2.1	OBI . . . . .	3
2.1.1	Images . . . . .	3
2.1.2	Bias . . . . .	3
2.1.3	Parameters . . . . .	4
2.1.4	Events . . . . .	4
2.2	Compared Parameters . . . . .	5
2.3	Aspect . . . . .	6
2.4	Star Slots . . . . .	8
2.5	FID Slots . . . . .	8
<b>A</b>	<b>Summary</b>	<b>9</b>
A.1	Status . . . . .	9
A.2	Comments . . . . .	9

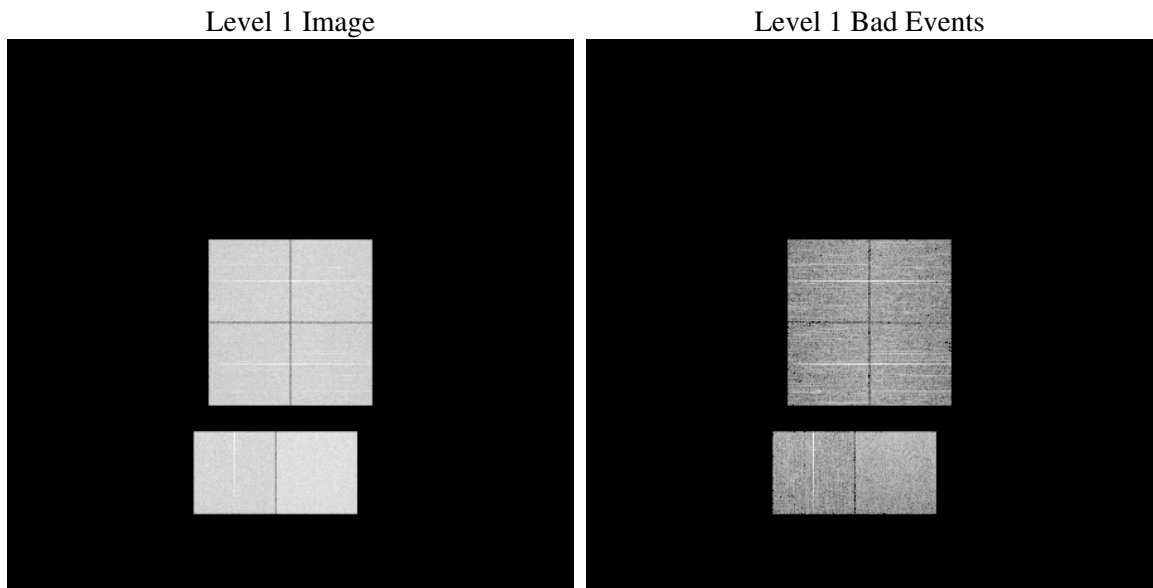
# 1 Front

seq_num	&#160
obs_id	60085
title	ACIS-012367 diagnostics
observer	CHANDRA engineering request/realtime commanding
object	&#160
dtcycle	0
cycle	P
ra_targ	0.0
dec_targ	0.0
ra_nom	323.22276665193
dec_nom	-14.418193434493
roll_nom	287.60203361432
revision	2
ontime	8277.3465428352
livetime	8172.5337968901
ontime0	6449.4807011485
ontime1	6663.4258098006
ontime2	6154.6339873672
ontime3	6319.7599690855
ontime6	6838.5203947425
ontime7	8277.3465428352
l2events	1145154

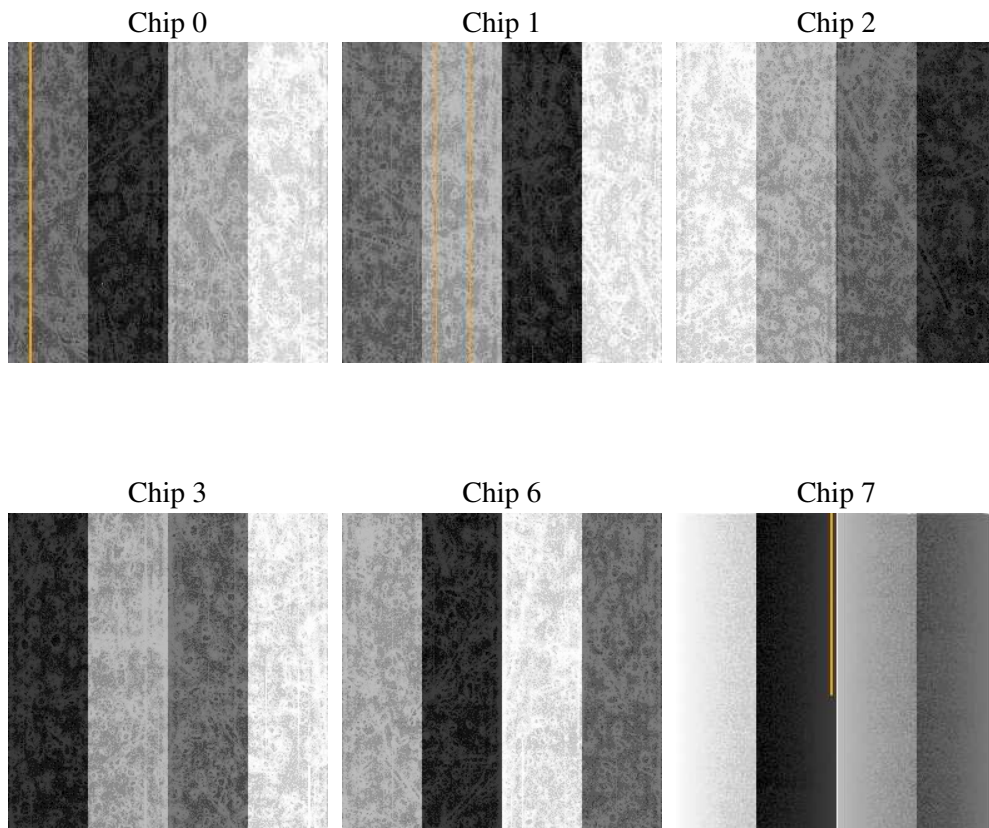
## 2 OBI

### 2.1 OBI

#### 2.1.1 Images



#### 2.1.2 Bias



### 2.1.3 Parameters

obi_num	1
ascdsver	7.6.7.2
caldbver	3.2.1
date	2006-04-25T08:53:10
revision	2

sched_exp_time	0.0
ontime	8277.5229285061
ontime0	6449.6160468161
ontime1	6663.5201154649
ontime2	6154.6872530282
ontime3	6319.9773947597
ontime6	6838.53262043
ontime7	8277.5229285061
l1events	1498262

### 2.1.4 Events

	ccd 0	ccd 1	ccd 2	ccd 3	ccd 6	ccd 7
level 1 events	230568	238443	226065	232800	256875	313511
rejected events	44975	45583	47080	48108	49714	60356
rejected %	19%	19%	20%	20%	19%	19%

	ccd 0	ccd 1	ccd 2	ccd 3	ccd 6	ccd 7
grade 0 events	102340	105233	100471	103122	112438	43649
	44%	44%	44%	44%	43%	13%
grade 1 events	616	545	645	650	611	125
	0%	0%	0%	0%	0%	0%
grade 2 events	32120	34598	30203	31812	35766	75961
	13%	14%	13%	13%	13%	24%
grade 3 events	12033	12350	11663	12209	12962	18206
	5%	5%	5%	5%	5%	5%
grade 4 events	12071	12381	11669	12213	13001	17928
	5%	5%	5%	5%	5%	5%
grade 5 events	2733	2985	2736	2891	3287	7158
	1%	1%	1%	1%	1%	2%
grade 6 events	27029	28298	24979	25336	32994	97411
	11%	11%	11%	10%	12%	31%
grade 7 events	41626	42053	43699	44567	45816	53073
	18%	17%	19%	19%	17%	16%

## 2.2 Compared Parameters

Parameter	Planned	Actual	Parameter	Planned	Actual
Instrument	ACIS	ACIS	Obspar format version number	6	6
Detector	ACIS-012367	ACIS-012367	Obspar file type	PREDICTED	ACTUAL
Grating	NONE	NONE	Obspar update status	NONE	UPDATED
Data mode	FAINT	FAINT	On-chip summing requested	N	N
Observation mode	SECONDARY	SECONDARY	Subarray requested	NONE	NONE
Pointing RA	0	323.2227666519335	Alternating exposures requested	N	N
Pointing Dec	0	-14.41819343449316	Primary exposure time	3.2	3.2
Pointing Roll	0.0	287.6020336143236			
SIM focus pos (mm)	-0.782348	-0.6828225247311905			
SIM defocus (mm)	0	0.8505141146731063			
SIM translation stage pos (mm)	-233.592463	250.4635187648994			
SIM translation stage offset (mm)	0	-0.007540371344731511			
Observation start time	209532153.676592	209532152.65161			
Observation start date	2004-08-22T03:22:34	2004-08-22T03:22:32			
Observation end time	209554892.277604	209554891.25262			
Observation end date	2004-08-22T09:41:32	2004-08-22T09:41:31			
Read mode	TIMED	TIMED			

## 2.3 Aspect



## **2.4 Star Slots**

## **2.5 FID Slots**



## A Summary

### A.1 Status

V&V Scientist	Jen Lauer
V&V Date (YYYY-MM-DD)	2006.04.25
V&V Edition	1
V&V Disposition and Status	OK
V&V Charge Time	8.27734654

### A.2 Comments