

# V&V Reference Report

## L2 ASCDS Version : 7.6.7.2

Observation 60084 - L2 Version 001  
Chandra X-Ray Center

L2 Processing Date : Apr 25 2006

## Contents

<b>1</b>	<b>Front</b>	<b>2</b>
<b>2</b>	<b>OBI</b>	<b>3</b>
2.1	OBI . . . . .	3
2.1.1	Images . . . . .	3
2.1.2	Bias . . . . .	3
2.1.3	Parameters . . . . .	4
2.1.4	Events . . . . .	4
2.2	Compared Parameters . . . . .	5
2.3	Aspect . . . . .	6
2.4	Star Slots . . . . .	8
2.5	FID Slots . . . . .	8
<b>A</b>	<b>Summary</b>	<b>9</b>
A.1	Status . . . . .	9
A.2	Comments . . . . .	9

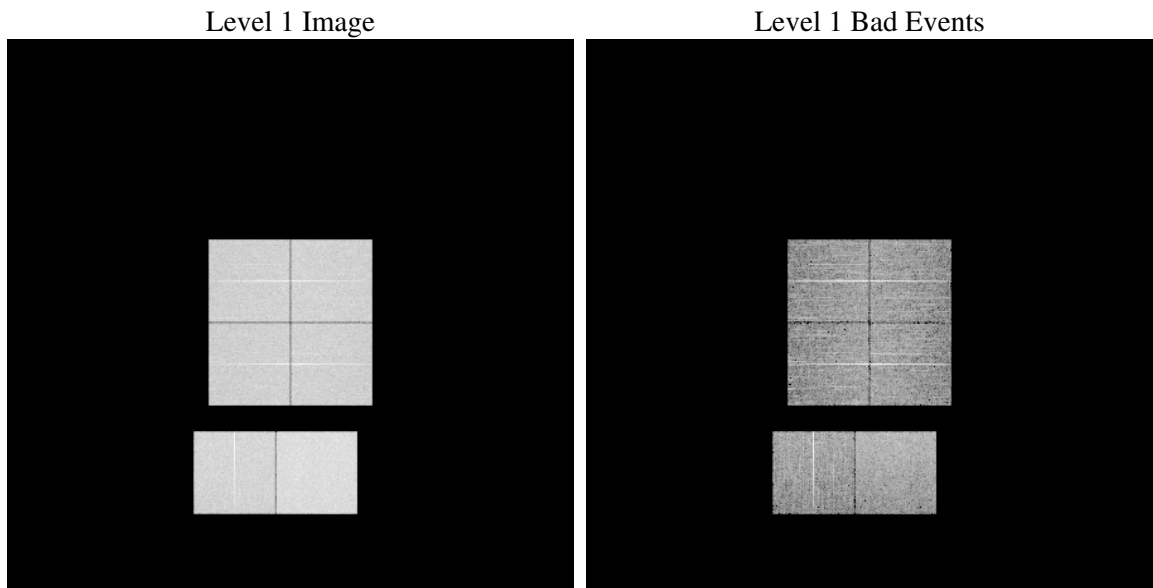
# 1 Front

seq_num	&#160
obs_id	60084
title	ACIS-012367 diagnostics
observer	CHANDRA engineering request/realtime commanding
object	&#160
dtcycle	0
cycle	P
ra_targ	0.0
dec_targ	0.0
ra_nom	129.96595506268
dec_nom	-33.000951259882
roll_nom	149.04418040756
revision	2
ontime	7798.3999709487
livetime	7699.6519348838
ontime0	6096.8946421742
ontime1	6314.0395799279
ontime2	5908.9194833338
ontime3	5989.9430921078
ontime6	6502.0157449543
ontime7	7798.3999709487
l2events	1077338

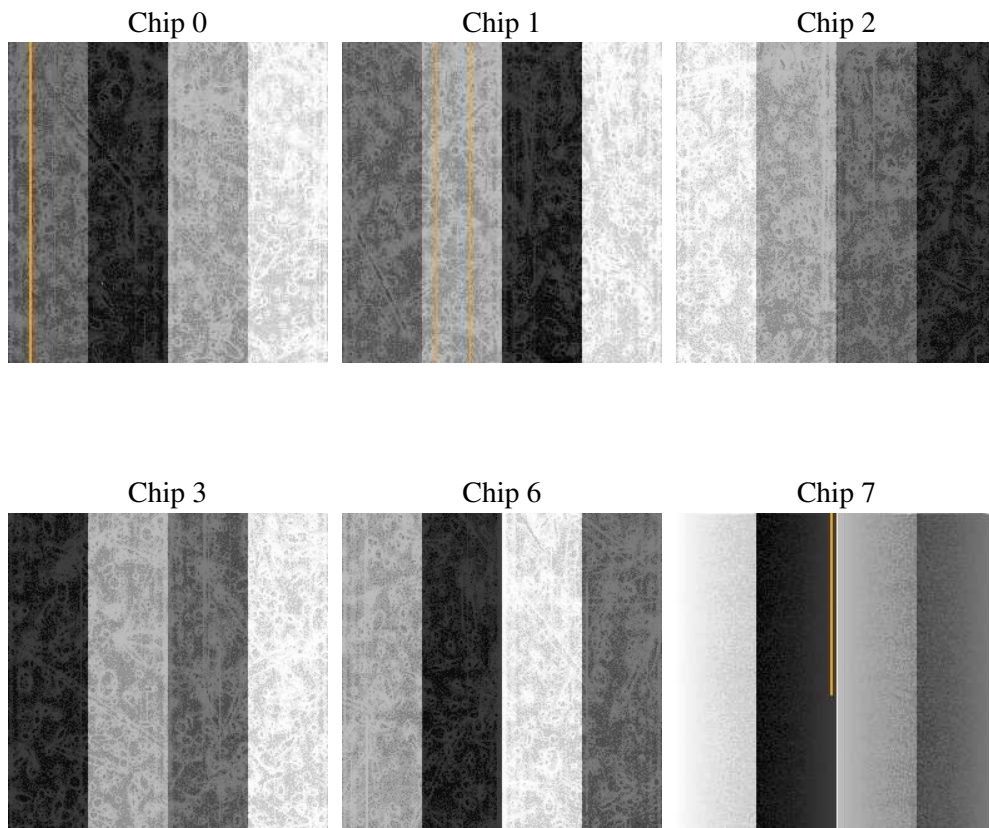
## 2 OBI

### 2.1 OBI

#### 2.1.1 Images



#### 2.1.2 Bias



### 2.1.3 Parameters

obi_num	0
ascdsver	7.6.7.2
caldsver	3.2.1
date	2006-04-25T09:11:07
revision	2

sched_exp_time	0.0
ontime	7801.0858873427
ontime0	6099.5805585682
ontime1	6316.7254963219
ontime2	5911.6053997278
ontime3	5992.6290085018
ontime6	6504.7016613483
ontime7	7801.0858873427
l1events	1412452

### 2.1.4 Events

	ccd 0	ccd 1	ccd 2	ccd 3	ccd 6	ccd 7
level 1 events	218084	224150	213985	218864	243399	293970
rejected events	43824	43620	43045	45541	47725	57311
rejected %	20%	19%	20%	20%	19%	19%

	ccd 0	ccd 1	ccd 2	ccd 3	ccd 6	ccd 7
grade 0 events	95746	99164	95599	97218	106538	40093
	43%	44%	44%	44%	43%	13%
grade 1 events	568	542	598	642	523	102
	0%	0%	0%	0%	0%	0%
grade 2 events	30788	31879	29337	29647	33893	71738
	14%	14%	13%	13%	13%	24%
grade 3 events	11225	11833	11123	11245	12139	17048
	5%	5%	5%	5%	4%	5%
grade 4 events	11185	11500	11088	11351	12133	16432
	5%	5%	5%	5%	4%	5%
grade 5 events	2784	2956	2661	2876	3130	6804
	1%	1%	1%	1%	1%	2%
grade 6 events	25405	26244	23873	23960	31072	91461
	11%	11%	11%	10%	12%	31%
grade 7 events	40383	40032	39706	41925	43971	50292
	18%	17%	18%	19%	18%	17%

## 2.2 Compared Parameters

Parameter	Planned	Actual	Parameter	Planned	Actual
Instrument	ACIS	ACIS	Obspar format version number	6	6
Detector	ACIS-012367	ACIS-012367	Obspar file type	PREDICTED	ACTUAL
Grating	NONE	NONE	Obspar update status	NONE	UPDATED
Data mode	FAINT	FAINT	On-chip summing requested	N	N
Observation mode	SECONDARY	SECONDARY	Subarray requested	NONE	NONE
Pointing RA	0	129.9659550626779	Alternating exposures requested	N	N
Pointing Dec	0	-33.00095125988188	Primary exposure time	3.2	3.2
Pointing Roll	0.0	149.0441804075616			
SIM focus pos (mm)	-0.782348	-0.7809083437167272			
SIM defocus (mm)	0	0.7524282956875696			
SIM translation stage pos (mm)	-233.592463	250.466033080201			
SIM translation stage offset (mm)	0	-0.01005468664627074			
Observation start time	209722432.635054	209722431.61008			
Observation start date	2004-08-24T08:13:53	2004-08-24T08:13:51			
Observation end time	209736466.935678	209736465.9107			
Observation end date	2004-08-24T12:07:47	2004-08-24T12:07:45			
Read mode	TIMED	TIMED			

## 2.3 Aspect



## **2.4 Star Slots**

## **2.5 FID Slots**



## A Summary

### A.1 Status

V&V Scientist	Jen Lauer
V&V Date (YYYY-MM-DD)	2006.04.25
V&V Edition	1
V&V Disposition and Status	OK
V&V Charge Time	7.79839997

### A.2 Comments