

V&V Reference Report

L2 ASCDS Version : 7.6.7.1

Observation 60079 - L2 Version 001
Chandra X-Ray Center

L2 Processing Date : Apr 19 2006

Contents

1	Front	2
2	OBI	3
2.1	OBI	3
2.1.1	Images	3
2.1.2	Bias	3
2.1.3	Parameters	4
2.1.4	Events	4
2.2	Compared Parameters	5
2.3	Aspect	6
2.4	Star Slots	8
2.5	FID Slots	8
A	Summary	9
A.1	Status	9
A.2	Comments	9

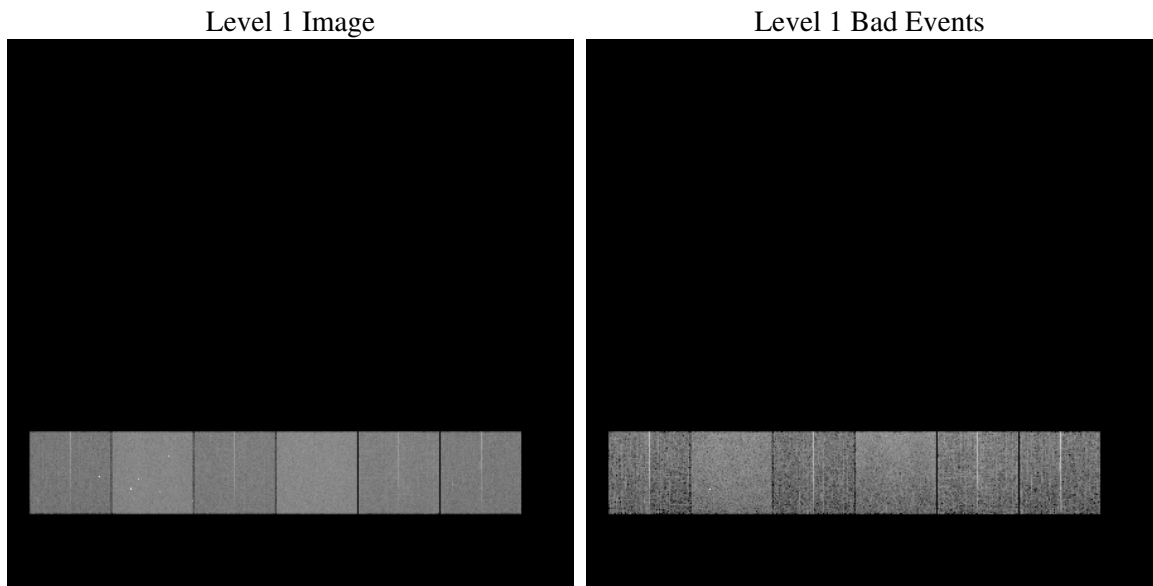
1 Front

seq_num	
obs_id	60079
title	ACIS-456789 diagnostics
observer	CHANDRA engineering request/realtime commanding
object	
dtcycle	0
cycle	P
ra_targ	0.0
dec_targ	0.0
ra_nom	287.99623900957
dec_nom	42.971483052691
roll_nom	231.66298413008
revision	2
ontime	6447.9999759793
livetime	6366.351517764
ontime4	4299.2377556264
ontime5	6447.9999759793
ontime6	4727.0467068553
ontime7	6447.9999759793
ontime8	4872.89054811
ontime9	4568.2388755977
l2events	871126

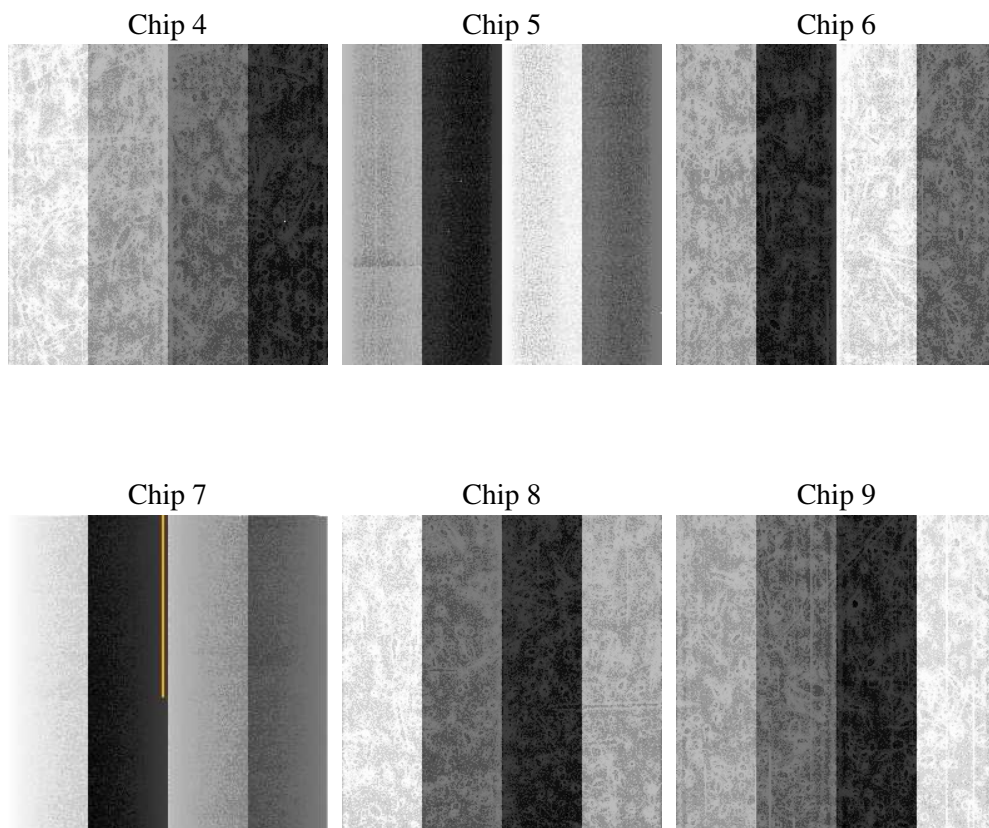
2 OBI

2.1 OBI

2.1.1 Images



2.1.2 Bias



2.1.3 Parameters

obi_num	0
ascdsver	7.6.7.1
caldbver	3.2.1
date	2006-04-19T17:09:39
revision	2

sched_exp_time	0.0
ontime	6449.5921871364
ontime4	4300.8299667835
ontime5	6449.5921871364
ontime6	4728.6389180124
ontime7	6449.5921871364
ontime8	4874.4827592671
ontime9	4569.8310867548
l1events	1172113

2.1.4 Events

	ccd 4	ccd 5	ccd 6	ccd 7	ccd 8	ccd 9
level 1 events	156585	231863	177674	245005	192200	168786
rejected events	36021	50863	35169	47021	42808	36430
rejected %	23%	21%	19%	19%	22%	21%

	ccd 4	ccd 5	ccd 6	ccd 7	ccd 8	ccd 9
grade 0 events	69867	22288	77755	35340	80985	72858
	44%	9%	43%	14%	42%	43%
grade 1 events	545	464	390	92	438	461
	0%	0%	0%	0%	0%	0%
grade 2 events	19193	83750	24620	59321	26198	22866
	12%	36%	13%	24%	13%	13%
grade 3 events	7990	5895	8884	14473	9857	8566
	5%	2%	5%	5%	5%	5%
grade 4 events	8235	5835	8766	14448	9896	8449
	5%	2%	4%	5%	5%	5%
grade 5 events	1970	5182	2356	5725	2882	2401
	1%	2%	1%	2%	1%	1%
grade 6 events	15279	63232	22480	74402	22456	19617
	9%	27%	12%	30%	11%	11%
grade 7 events	33506	45217	32423	41204	39488	33568
	21%	19%	18%	16%	20%	19%

2.2 Compared Parameters

Parameter	Planned	Actual	Parameter	Planned	Actual
Instrument	ACIS	ACIS	Obspar format version number	6	6
Detector	ACIS-456789	ACIS-456789	Obspar file type	PREDICTED	ACTUAL
Grating	NONE	NONE	Obspar update status	NONE	UPDATED
Data mode	FAINT	FAINT	On-chip summing requested	N	N
Observation mode	SECONDARY	SECONDARY	Subarray requested	NONE	NONE
Pointing RA	0	287.9962390095679	Alternating exposures requested	N	N
Pointing Dec	0	42.97148305269126	Primary exposure time	3.2	3.2
Pointing Roll	0.0	231.6629841300842			
SIM focus pos (mm)	-0.684267	-0.6828225247311905			
SIM defocus (mm)	0	0.8505141146731063			
SIM translation stage pos (mm)	-190.132523	250.466033080201			
SIM translation stage offset (mm)	0	-0.01005468664627074			
Observation start time	209947434.495088	209947433.4701			
Observation start date	2004-08-26T22:43:54	2004-08-26T22:43:53			
Observation end time	209955236.795435	209955235.77045			
Observation end date	2004-08-27T00:53:57	2004-08-27T00:53:55			
Read mode	TIMED	TIMED			

2.3 Aspect

2.4 Star Slots

2.5 FID Slots

A Summary

A.1 Status

V&V Scientist	Beth Sundheim
V&V Date (YYYY-MM-DD)	2006.04.19
V&V Edition	1
V&V Disposition and Status	OK
V&V Charge Time	6.44799997

A.2 Comments